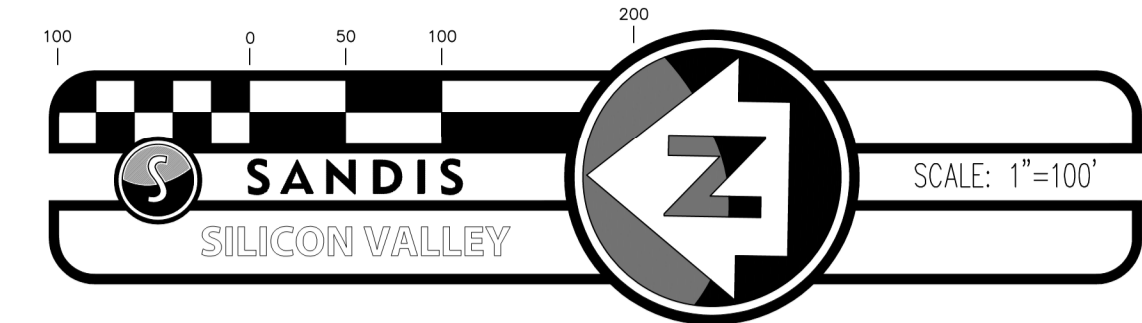
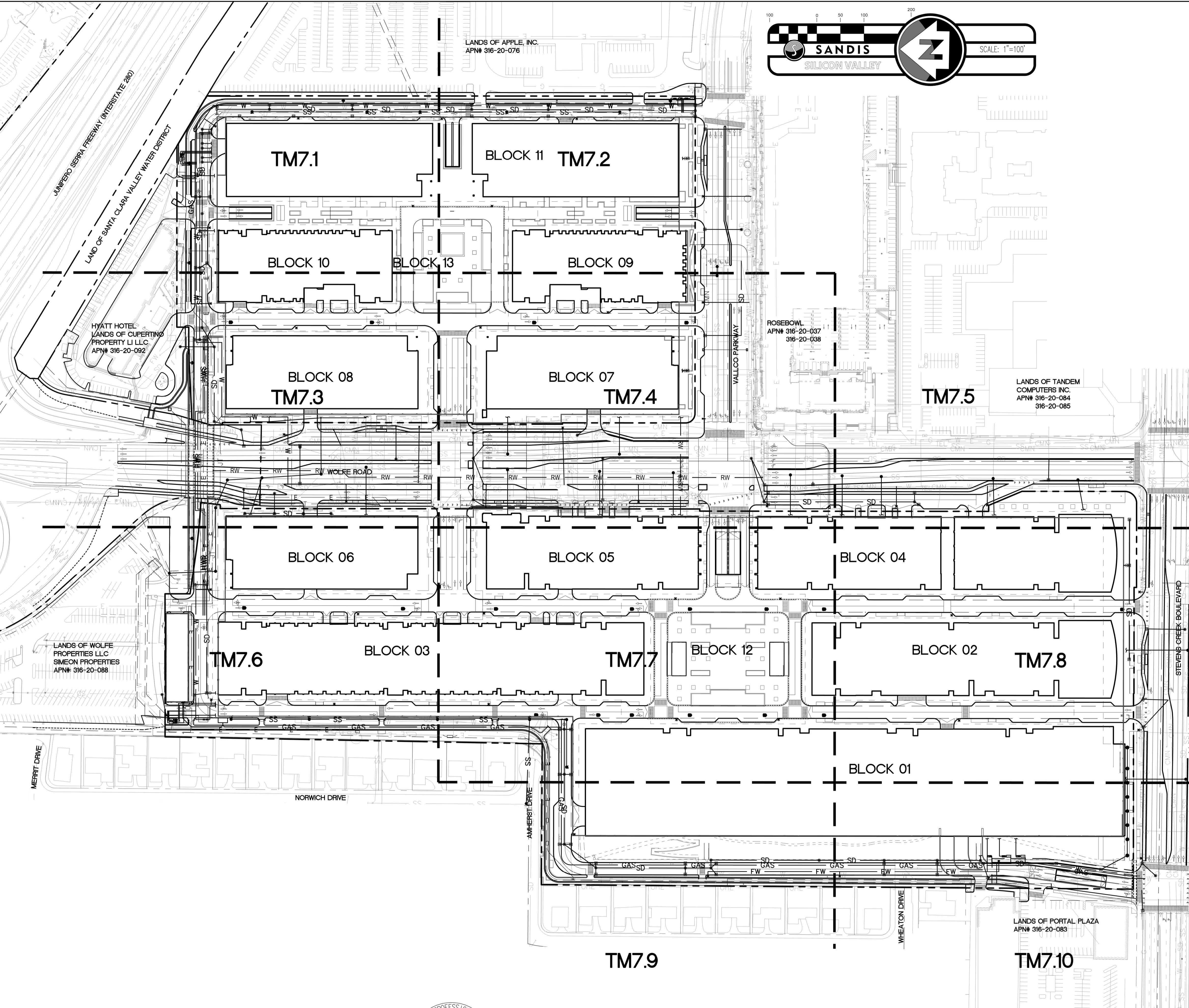


LANDS OF APPLE, INC.
 APN# 316-20-076



NO PART OF THIS DOCUMENT MAY BE REPRODUCED IN ANY FORM INCLUDING PHOTOCOPY, RECORDING OR ANY INFORMATION RETRIEVABLE AND STORAGE SYSTEM, WITHOUT PERMISSION IN WRITING FROM SANDIS.



HYATT HOTEL
 LANDS OF CUPERTINO
 PROPERTY LI LLC
 APN# 316-20-092

LANDS OF WOLFE
 PROPERTIES LLC
 SIMEON PROPERTIES
 APN# 316-20-088

ROSEBOWL
 APN# 316-20-037
 316-20-038

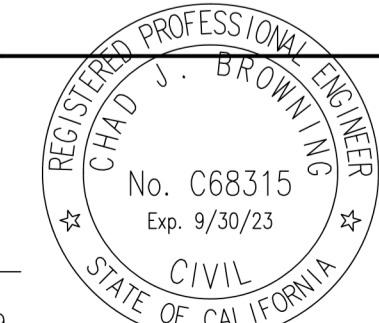
LANDS OF TANDEM
 COMPUTERS INC.
 APN# 316-20-084
 316-20-085

LANDS OF PORTAL PLAZA
 APN# 316-20-083



**CIVIL ENGINEERS
 SURVEYORS
 PLANNERS**

DATE: 03/23/2022
 SCALE: 1"=30'
 DRAWN BY: SP
 APPROVED BY: ND
 DRAWING NO.: 215028
 DATE: MAY 27, 2022
 CHAD J. BROWNING
 R.C.E. NO. 68315, EXPIRES 9-30-19



No.	REVISION/ISSUE	DATE	BY
REV-0	SB-35 DEVELOPMENT APPLICATION	03/27/2018	ND
REV-1	SB-35 APPLICATION REVISIONS	08/06/2018	ND
REV-2	SB-35 APPLICATION CONFORM SET	09/15/2018	ND
REV-3	SB-35 MODIFICATION DOCUMENTS	03/23/2022	ND

OVERALL
 UTILITY PLAN

TENTATIVE SUBDIVISION MAP
 VALLCO TOWN CENTER
 CUPERTINO CALIFORNIA

SHEET
TM7.0
 OF 73 SHEETS
 Copyright © 2018 by Sandis