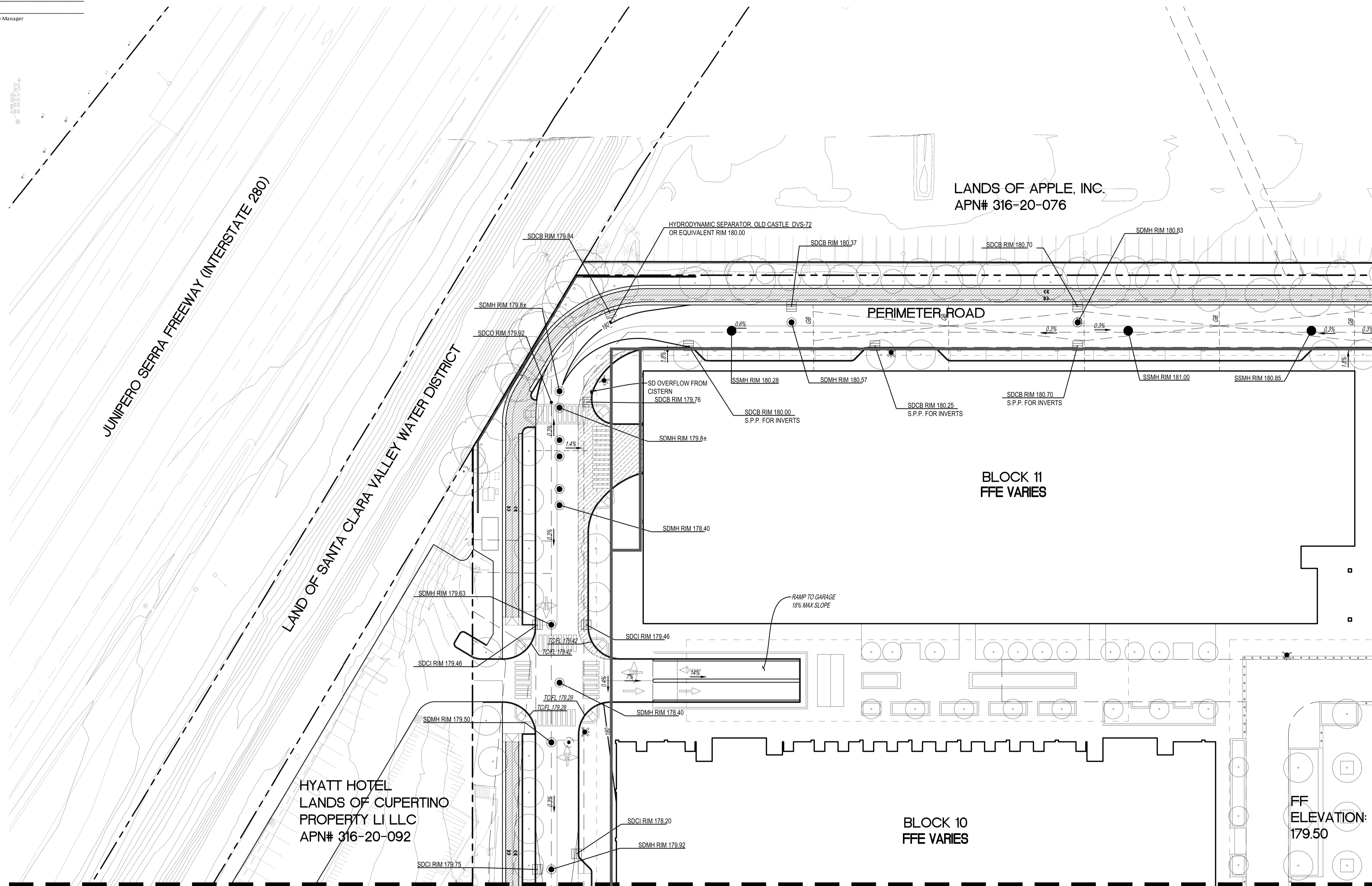


NO PART OF THIS DOCUMENT MAY BE REPRODUCED IN ANY FORM INCLUDING PHOTOCOPY, RECORDING OR ANY INFORMATION RETRIEVABLE AND STORAGE SYSTEM, WITHOUT PERMISSION IN WRITING FROM SANDIS.



**LEGEND**

	PROPERTY LINE
	ADJACENT PROPERTY LINE
	STREET CENTERLINE
	EASEMENT LINE
	FLOW ARROW
	OVERLAND RELEASE
	STORM DRAIN CATCH BASIN
	CONTOUR LINE
	UNDERGROUND GARAGE LIMIT

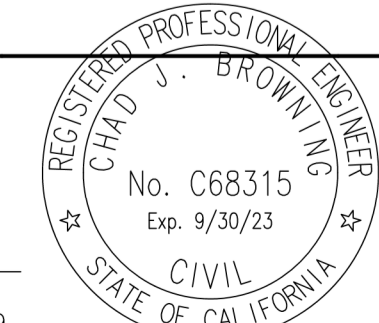
- GRADING NOTES:**
- GRADING IS FOR SCHEMATIC DESIGN ONLY. AREAS WHICH SHOW 0% SLOPE OR CROSS SLOPE WILL BE FINE GRADED TO HAVE PROPER DRAINAGE. SLOPES ARE INTENDED TO SHOW OVERALL GRADING INTENT ONLY.
  - NATURAL GRADE IS BEING ESTABLISHED BY THIS TENTATIVE MAP.

**EARTHWORK QUANTITY**

CUT = 1,510,000 CUBIC YARDS  
 FILL = 0 CUBIC YARDS  
 NET CUT = 1,510,000 CUBIC YARDS

**SANDIS** CIVIL ENGINEERS SURVEYORS PLANNERS  
 1700 S. Winchester Blvd, Suite 200, Campbell, CA 95008 | P. 408.636.0900 | F. 408.636.0999 | www.sandis.net  
 SILICON VALLEY TRI-VALLEY CENTRAL VALLEY SACRAMENTO EAST BAY/SF

DATE: 03/23/2022	DATE: MAY 27, 2022
SCALE: 1"=30'	
DRAWN BY: SP	
APPROVED BY: ND	
DRAWING NO.: 215028	CHAD J. BROWNING R.C.E. NO. 68315, EXPIRES 9-30-19



No.	REVISION/ISSUE	DATE	BY
REV-0	SB-35 DEVELOPMENT APPLICATION	03/27/2018	ND
REV-1	SB-35 APPLICATION REVISIONS	08/06/2018	ND
REV-2	SB-35 APPLICATION CONFORM SET	09/15/2018	ND
REV-3	SB-35 MODIFICATION DOCUMENTS	03/23/2022	ND

GRADING AND DRAINAGE PLAN

TENTATIVE SUBDIVISION MAP  
 VALLCO TOWN CENTER  
 CUPERTINO CALIFORNIA

File: S:\215028\4 ENGINEERING\2 PLAN SETS\3 SHEET SET\TENTATIVE MAP\TM-6 GRADING AND DRAINAGE PLAN.dwg Date: May 27, 2022 - 9:55am, amoran