

MATCHLINE - SEE SHEET TM5.3

BLOCK 06

BLOCK 03

PERIMETER ROAD

LANDS OF WOLFE
 PROPERTIES LLC
 SIMEON PROPERTIES
 APN#: 316-20-088

- LEGEND**
- PROPOSED PROPERTY LINE
 - - - ADJACENT PROPERTY LINE
 - - - STREET CENTERLINE (BASED ON CITY MONUMENTATION)
 - - - EASEMENT LINE
 - /// RELINQUISHED INGRESS/ EGRESS RIGHTS TO ADJACENT PROPERTIES
 - PUBLIC UTILITY/SERVICE EASEMENT (P.U.E.)/(P.S.E.)
 - PUBLIC ACCESS EASEMENT (P.A.E.)
 - ▨ SANITARY SEWER EASEMENT
 - ▩ WATER EASEMENT
 - AIR RIGHTS EASEMENT
 - ▧ STORMWATER MANAGEMENT FACILITY EASEMENT
 - ▩ VEHICULAR AND PEDESTRIAN INGRESS AND EGRESS EASEMENT
 - ▩ VEHICULAR TUNNEL EASEMENT
 - ▩ COLUMNS, SUPPORTS, AND FOOTINGS EASEMENT
 - ▩ PG&E EASEMENT
 - ▩ EMERGENCY VEHICLE ACCESS EASEMENT (E.V.A.E.)

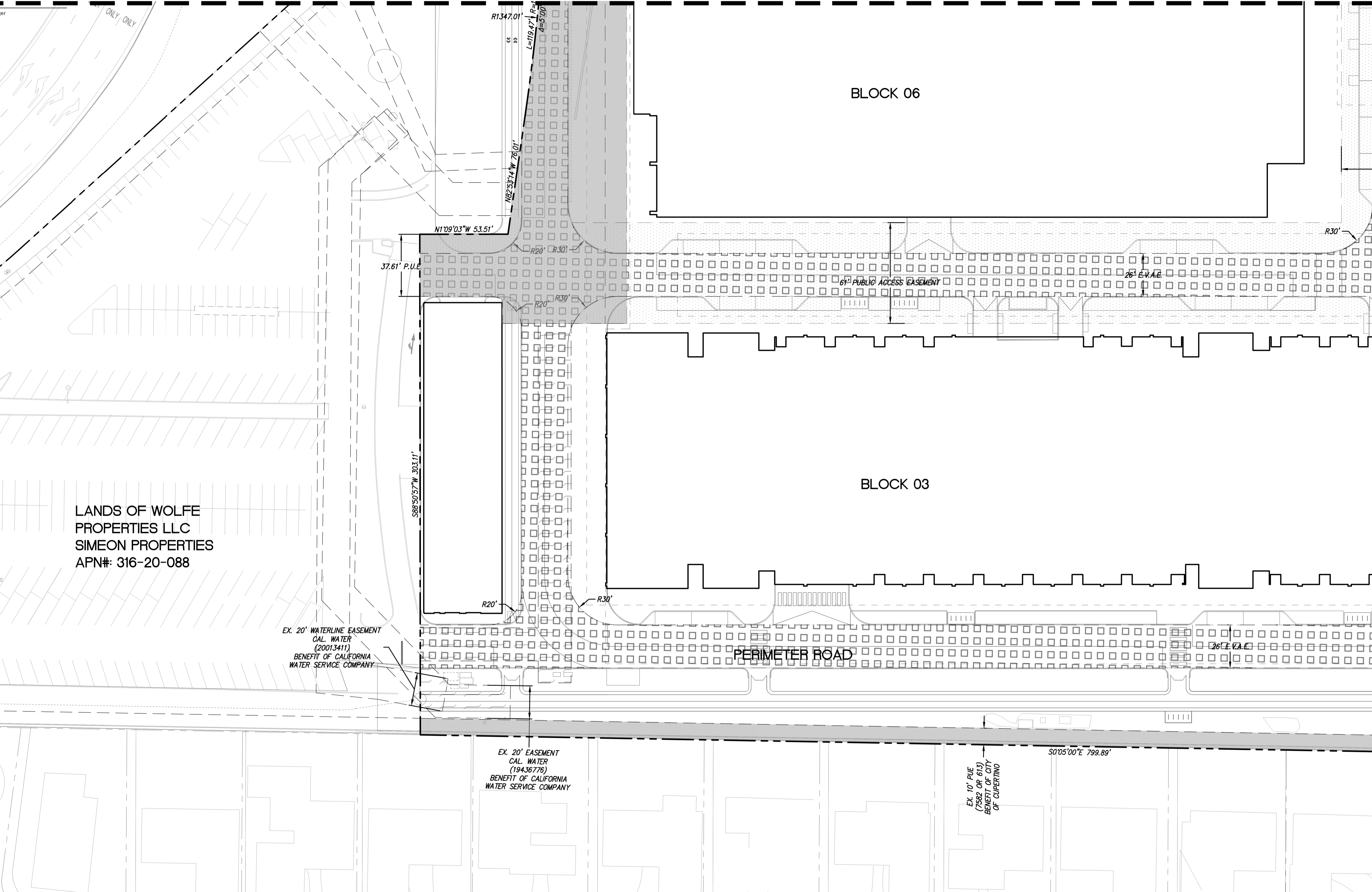
MATCHLINE - SEE SHEET TM5.7

NO PART OF THIS DOCUMENT MAY BE REPRODUCED IN ANY FORM INCLUDING PHOTOCOPY, RECORDING OR ANY INFORMATION RETRIEVABLE AND STORAGE SYSTEM, WITHOUT PERMISSION IN WRITING FROM SANDIS.

EX. 20' WATERLINE EASEMENT
 CAL. WATER
 (20013411)
 BENEFIT OF CALIFORNIA
 WATER SERVICE COMPANY

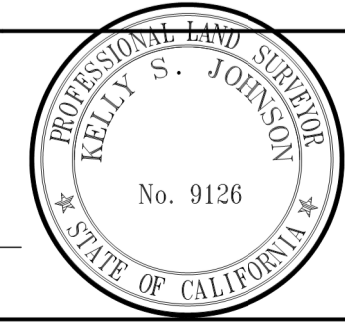
EX. 20' EASEMENT
 CAL. WATER
 (19438776)
 BENEFIT OF CALIFORNIA
 WATER SERVICE COMPANY

EX. 10' PUE
 (7592 OR 613)
 BENEFIT OF CITY
 OF CUPERTINO



**CIVIL ENGINEERS
 SURVEYORS
 PLANNERS**

DATE: 03/23/2022
 SCALE: 1"=30'
 DRAWN BY: SP
 APPROVED BY: ND
 DRAWING NO.: 215028
 DATE: MARCH 23, 2022
 KELLY S. JOHNSON
 P.L.S. NO. 9126, EXPIRES 9-30-22



No.	REVISION/ISSUE	DATE	BY
REV-0	SB-35 DEVELOPMENT APPLICATION	03/27/2018	ND
REV-1	SB-35 APPLICATION REVISIONS	08/06/2018	ND
REV-2	SB-35 APPLICATION CONFORM SET	09/15/2018	ND
REV-3	SB-35 MODIFICATION DOCUMENTS	03/23/2022	ND

**PUBLIC AND PRIVATE
 EASEMENTS, DIMENSIONS AND BOUNDARIES**

**TENTATIVE SUBDIVISION MAP
 VALLCO TOWN CENTER
 CUPERTINO CALIFORNIA**

SHEET
TM5.6
 OF 73 SHEETS
 Copyright © 2018 by Sandis