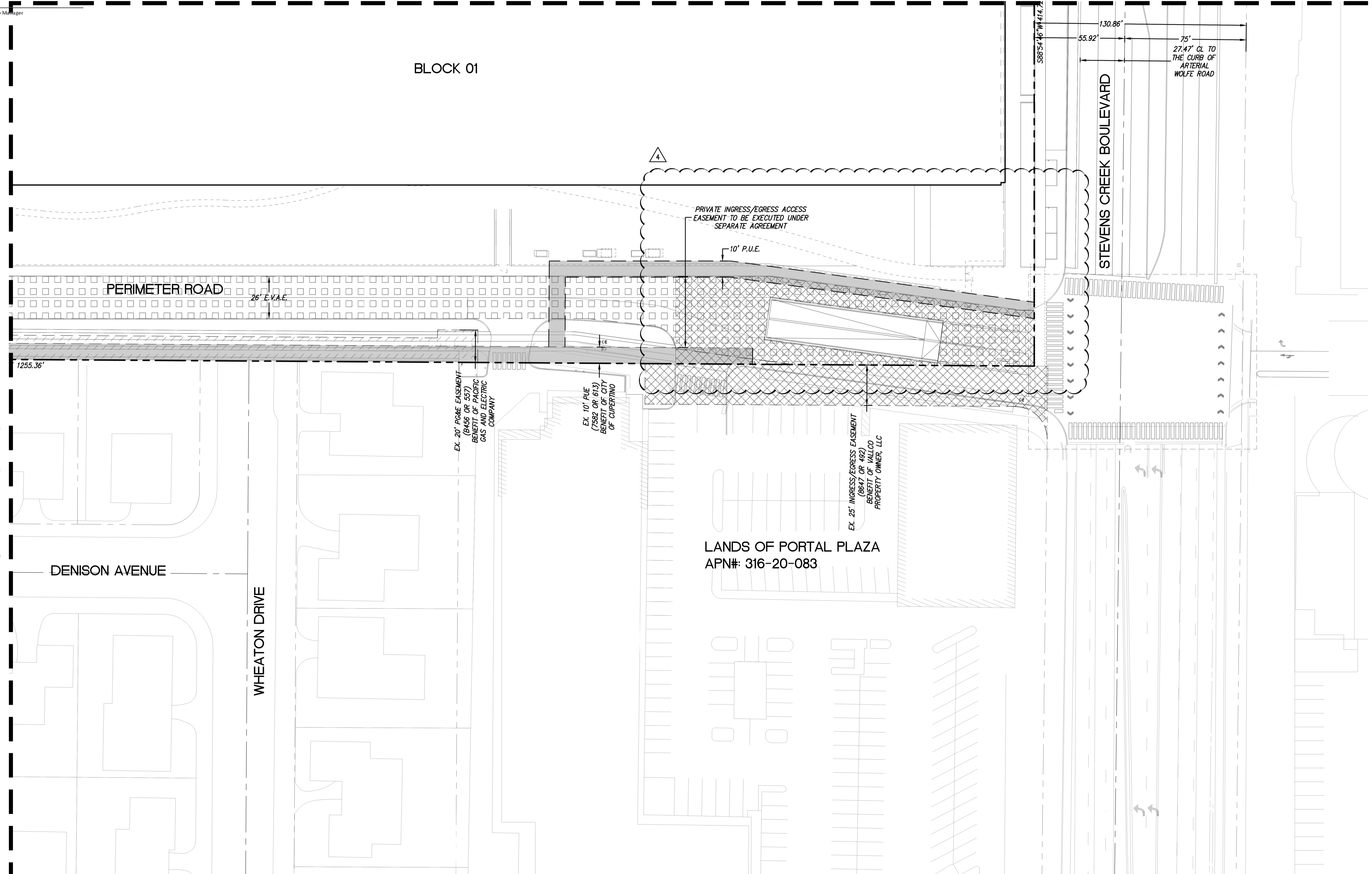


**MATCHLINE - SEE SHEET TM5.8**

NO PART OF THIS DOCUMENT MAY BE REPRODUCED IN ANY FORM INCLUDING PHOTOCOPY, RECORDING OR ANY INFORMATION RETRIEVABLE AND STORAGE SYSTEM, WITHOUT PERMISSION IN WRITING FROM SANDIS.

**MATCHLINE - SEE SHEET TM5.9**

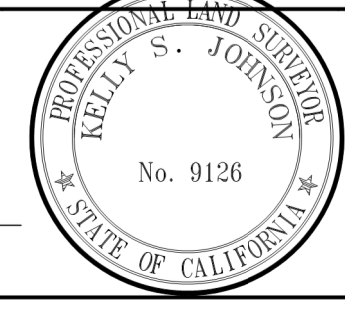


**LEGEND**

	PROPOSED PROPERTY LINE
	ADJACENT PROPERTY LINE (BASED ON CITY MONUMENTATION) EASEMENT LINE
	RELINQUISHED INGRESS/ EGRESS RIGHTS TO ADJACENT PROPERTIES
	PUBLIC UTILITY/SERVICE EASEMENT (P.U.E.)/(P.S.E.)
	PUBLIC ACCESS EASEMENT (P.A.E.)
	SANITARY SEWER EASEMENT
	WATER EASEMENT
	AIR RIGHTS EASEMENT
	STORMWATER MANAGEMENT FACILITY EASEMENT
	VEHICULAR AND PEDESTRIAN INGRESS AND EGRESS EASEMENT
	VEHICULAR TUNNEL EASEMENT
	COLUMNS, SUPPORTS, AND FOOTINGS EASEMENT
	PG&E EASEMENT
	EMERGENCY VEHICLE ACCESS EASEMENT (E.V.A.E.)

**SANDIS** CIVIL ENGINEERS SURVEYORS PLANNERS  
 1700 S. Winchester Blvd, Suite 200, Campbell, CA 95008 | P. 408.636.0900 | F. 408.636.0999 | www.sandis.net  
 SILICON VALLEY TRI-VALLEY CENTRAL VALLEY SACRAMENTO EAST BAY/SF

DATE: 03/23/2022	DATE: MAY 27, 2022
SCALE: 1"=30'	
DRAWN BY: SP	
APPROVED BY: ND	
DRAWING NO: 215028	
	KELLY S. JOHNSON P.L.S. NO. 9126, EXPIRES 9-30-22



No.	REVISION/ISSUE	DATE	BY
REV-0	SB-35 DEVELOPMENT APPLICATION	03/27/2018	ND
REV-1	SB-35 APPLICATION REVISIONS	08/06/2018	ND
REV-2	SB-35 APPLICATION CONFORM SET	09/15/2018	ND
REV-3	SB-35 MODIFICATION DOCUMENTS	03/23/2022	ND
REV-4	SB-35 MODIFICATION APPLICATION	05/27/2022	ND

**PUBLIC AND PRIVATE EASEMENTS, DIMENSIONS AND BOUNDARIES**

**TENTATIVE SUBDIVISION MAP VALLCO TOWN CENTER CUPERTINO CALIFORNIA**

File: S:\215028\4 ENGINEERING\2 PLAN SETS\3 SHEET SET\TENTATIVE MAP\TM-5 EASEMENTS AND DIMENSIONS.dwg Date: May 26, 2022 - 1:55pm, amoran