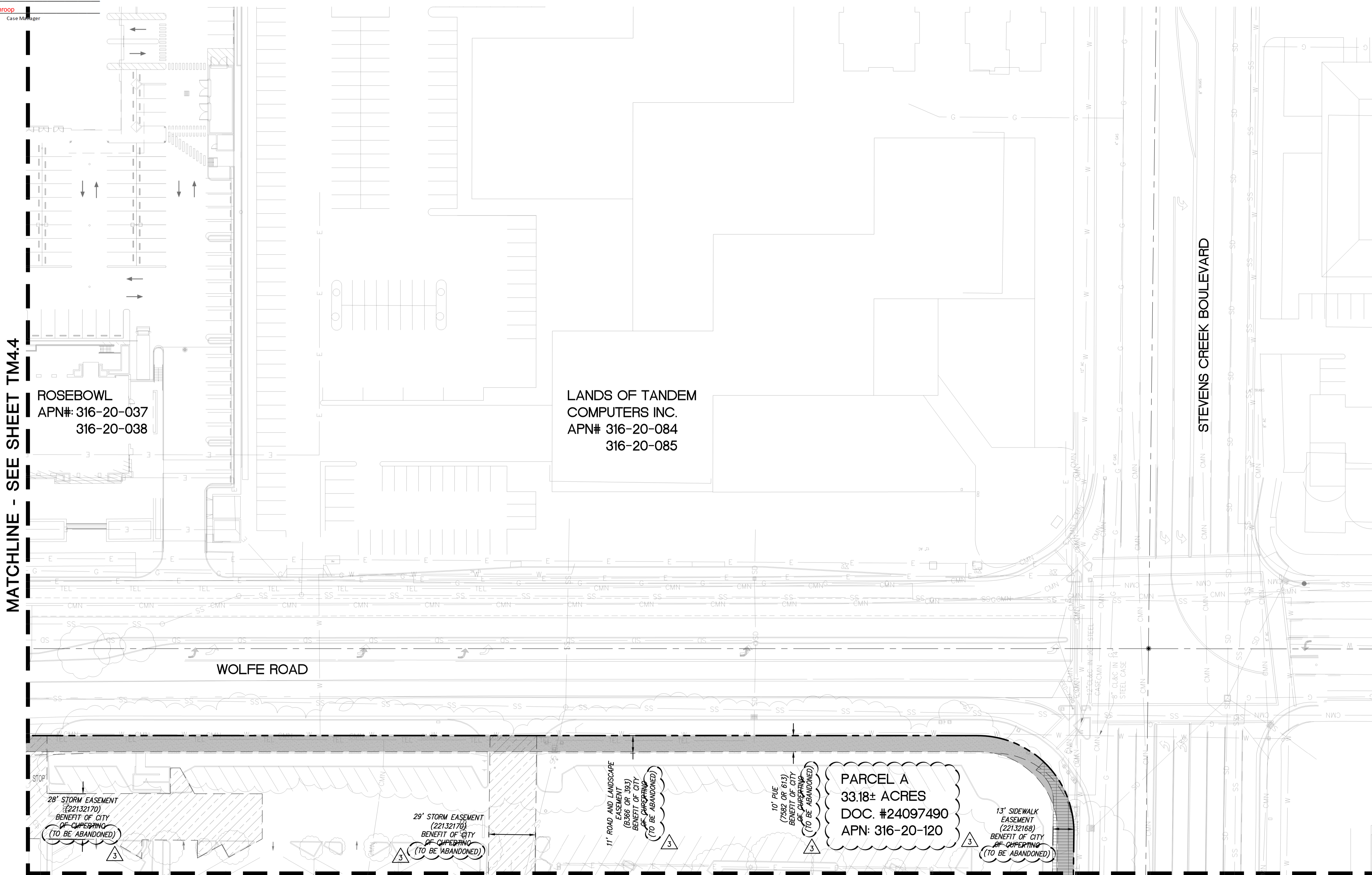


NO PART OF THIS DOCUMENT MAY BE REPRODUCED IN ANY FORM INCLUDING PHOTOCOPY, RECORDING OR ANY INFORMATION RETRIEVABLE AND STORAGE SYSTEM, WITHOUT PERMISSION IN WRITING FROM SANDIS.



MATCHLINE - SEE SHEET TM4.4

MATCHLINE - SEE SHEET TM4.8

LEGEND

	PROPERTY LINE
	ADJACENT PROPERTY LINE STREET CENTERLINE (BASED ON CITY MONUMENTATION) EASEMENT LINE
	RELINQUISHED INGRESS/ EGRESS RIGHTS TO ADJACENT PROPERTIES
	PUBLIC UTILITY EASEMENT (P.U.E.)
	ROADWAY EASEMENT
	PUBLIC ACCESS EASEMENT (P.A.E.)
	SANITARY SEWER EASEMENT
	WATER EASEMENT
	AIR RIGHTS EASEMENT
	STORMWATER MANAGEMENT FACILITY EASEMENT
	PUBLIC ROADWAY AND LANDSCAPE EASEMENT
	VEHICULAR AND PEDESTRIAN INGRESS AND EGRESS EASEMENT
	SIDEWALK EASEMENT
	TELEPHONE EASEMENT
	VEHICULAR TUNNEL EASEMENT
	COLUMNS, SUPPORTS, FOOTINGS EASEMENT
	PG&E EASEMENT
	EMERGENCY VEHICLE ACCESS EASEMENT (E.V.A.E.)

NOTES:
 1. ONLY EXISTING EASEMENTS ARE SHOWN ON THIS SHEET. ALL NEW EASEMENTS NEEDED FOR THE DEVELOPMENT ARE SHOWN ON TMS SHEETS.

ROSEBOWL
 APN#: 316-20-037
 316-20-038

LANDS OF TANDEM
 COMPUTERS INC.
 APN# 316-20-084
 316-20-085

WOLFE ROAD

STEVENS CREEK BOULEVARD

28' STORM EASEMENT (22132170) BENEFIT OF CITY OF CUPERTINO (TO BE ABANDONED)

29' STORM EASEMENT (22132170) BENEFIT OF CITY OF CUPERTINO (TO BE ABANDONED)

11' ROAD AND LANDSCAPE EASEMENT (2066 OR 393) BENEFIT OF CITY OF CUPERTINO (TO BE ABANDONED)

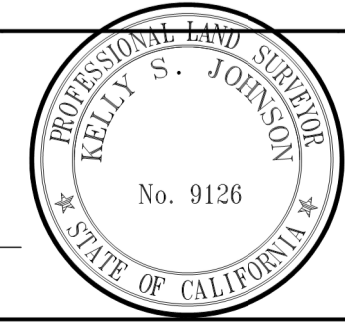
10' PUE (7052 OR 613) BENEFIT OF CITY OF CUPERTINO (TO BE ABANDONED)

PARCEL A
 33.18± ACRES
 DOC. #24097490
 APN: 316-20-120

13' SIDEWALK EASEMENT (2213216B) BENEFIT OF CITY OF CUPERTINO (TO BE ABANDONED)

SANDIS
 CIVIL ENGINEERS SURVEYORS PLANNERS
 1700 S. Winchester Blvd, Suite 200, Campbell, CA 95008 | P. 408.636.0900 | F. 408.636.0999 | www.sandis.net
 SILICON VALLEY TRI-VALLEY CENTRAL VALLEY SACRAMENTO EAST BAY/SF

DATE: 03/23/2022	DATE: MAY 27, 2022
SCALE: 1"=30'	
DRAWN BY: SP	
APPROVED BY: ND	
DRAWING NO.: 215028	



No.	REVISION/ISSUE	DATE	BY
REV-0	SB-35 DEVELOPMENT APPLICATION	03/27/2018	ND
REV-1	SB-35 APPLICATION REVISIONS	08/06/2018	ND
REV-2	SB-35 APPLICATION CONFORM SET	09/15/2018	ND
REV-3	SB-35 MODIFICATION APPLICATION	05/27/2022	ND

EXISTING PUBLIC AND PRIVATE EASEMENTS AND BOUNDARIES

TENTATIVE SUBDIVISION MAP
 VALLCO TOWN CENTER
 CUPERTINO CALIFORNIA

SHEET
TM4.5
 OF 73 SHEETS
 Copyright © 2018 by Sandis