

OWNER - VALCO PROPERTY OWNER LLC  
 2800 EL CAMINO REAL, SUITE 410, PALO ALTO, CA 94306  
 T. 650-344-1500

ARCHITECTURE - RAFAEL VINOLY ARCHITECTS  
 375 PEARL STREET, 31ST FLOOR, NEW YORK, NY 10038  
 T. 212-624-5000

ARCHITECTURE - RAFAEL VINOLY ARCHITECTS  
 10123 N. WOLFE ROAD, CUPERTINO, CA 95014  
 T. 408-627-7090

LANDSCAPE ARCHITECTURE - OJAI PARTNERSHIP LTD.  
 1811 JOHN F. KENNEDY BLVD, SUITE 1000, PHILADELPHIA, PA 19103  
 T. 214-440-0030

CIVIL - SANDIS CIVIL ENGINEERS SURVEYORS PLANNERS, INC.  
 1105 S. WINCHESTER BLVD, SUITE 200, CAMPBELL, CA 95008  
 T. 408-636-9000

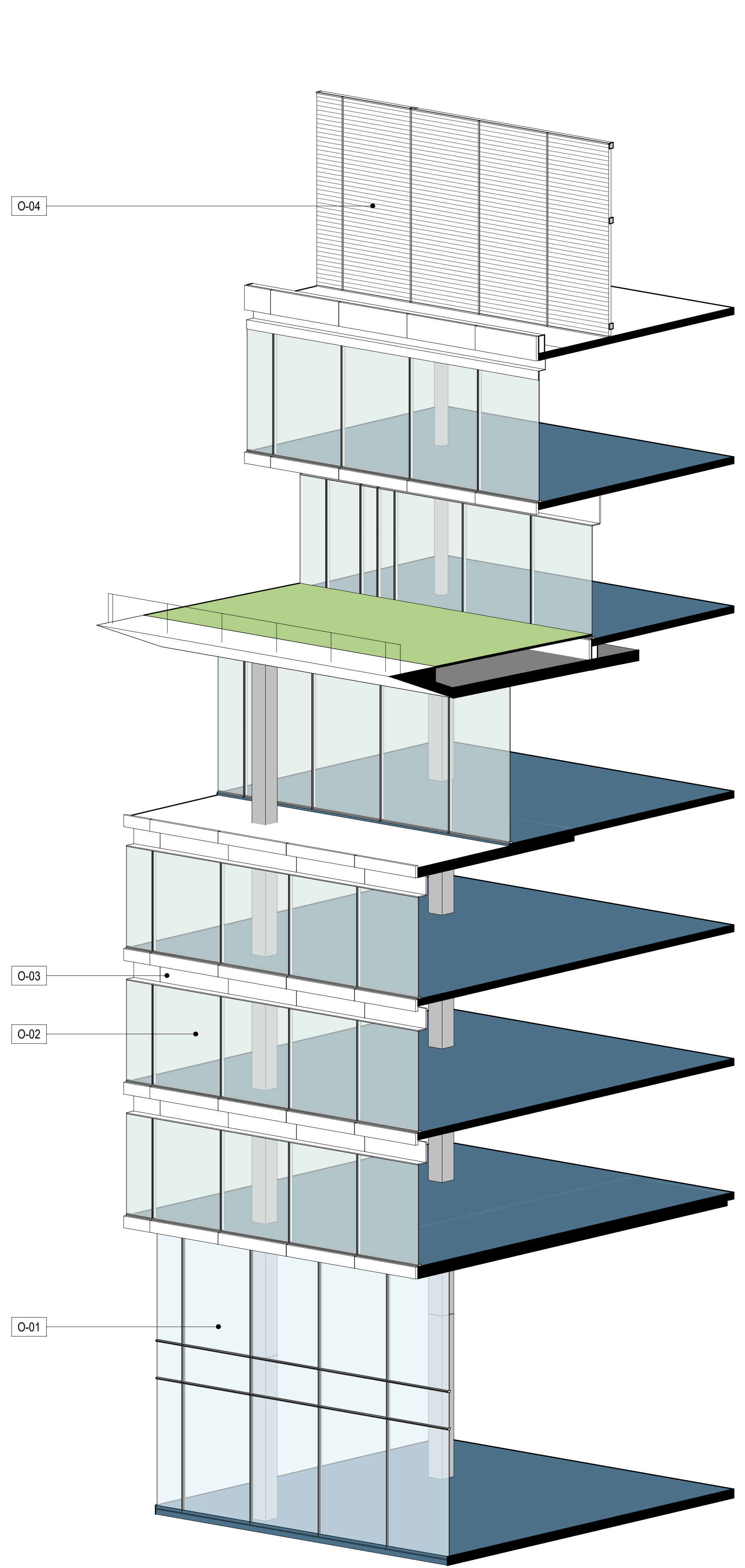
TRAFFIC - KIMLEY-HORN AND ASSOCIATES, INC.  
 100 W. SAN FERNANDO STREET, SUITE 250, SAN JOSE, CA 95113  
 T. 669-800-4130

LIGHTING DESIGN - ONE LUX STUDIO  
 158 WEST 20TH STREET, 10TH FLOOR, NEW YORK, NY 10011  
 T. 212-351-6750

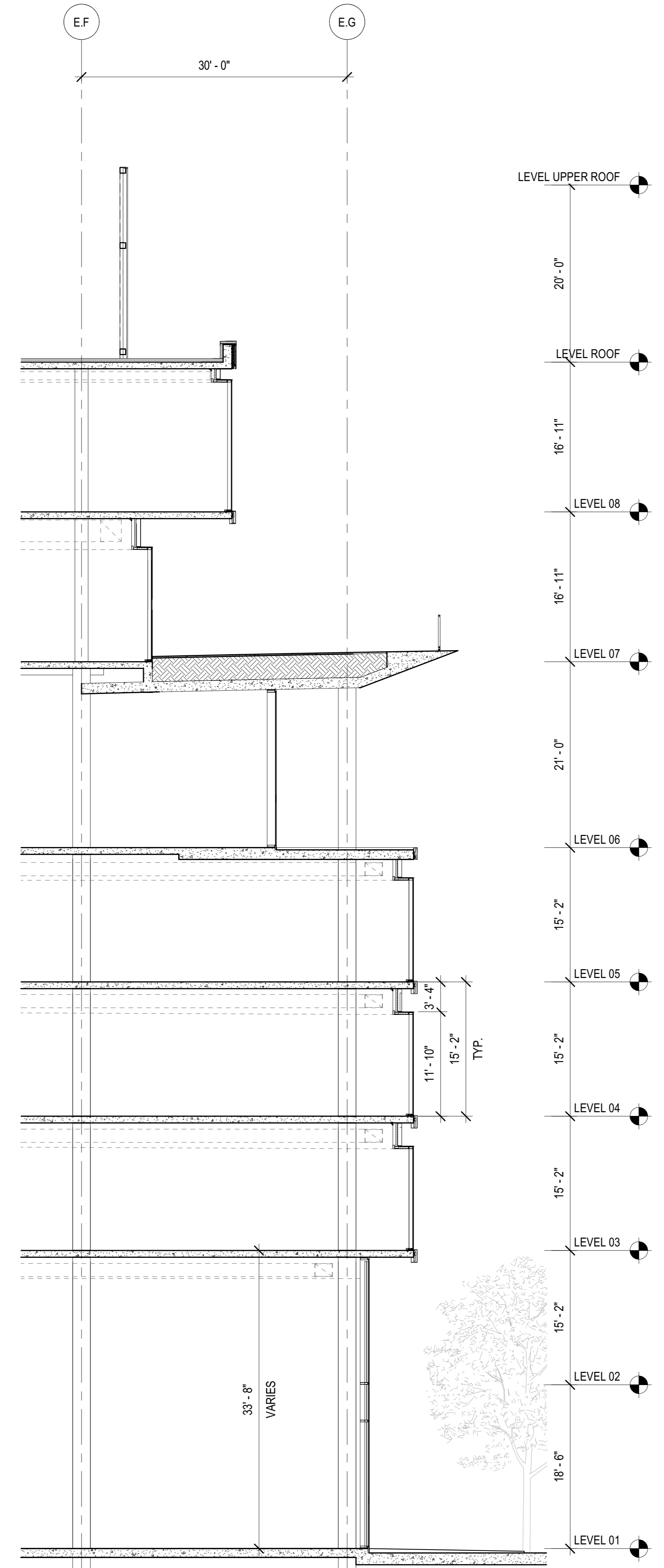
SIGNAGE & WAYFINDING - EXIT DESIGN  
 725 N. 4TH STREET, PHILADELPHIA, PA 19123  
 T. 215-581-1950

PARKING ENGINEERING - WATRY DESIGN, INC.  
 2099 GATEWAY PLACE, SUITE 550, SAN JOSE, CA 95110  
 T. 408-355-7000

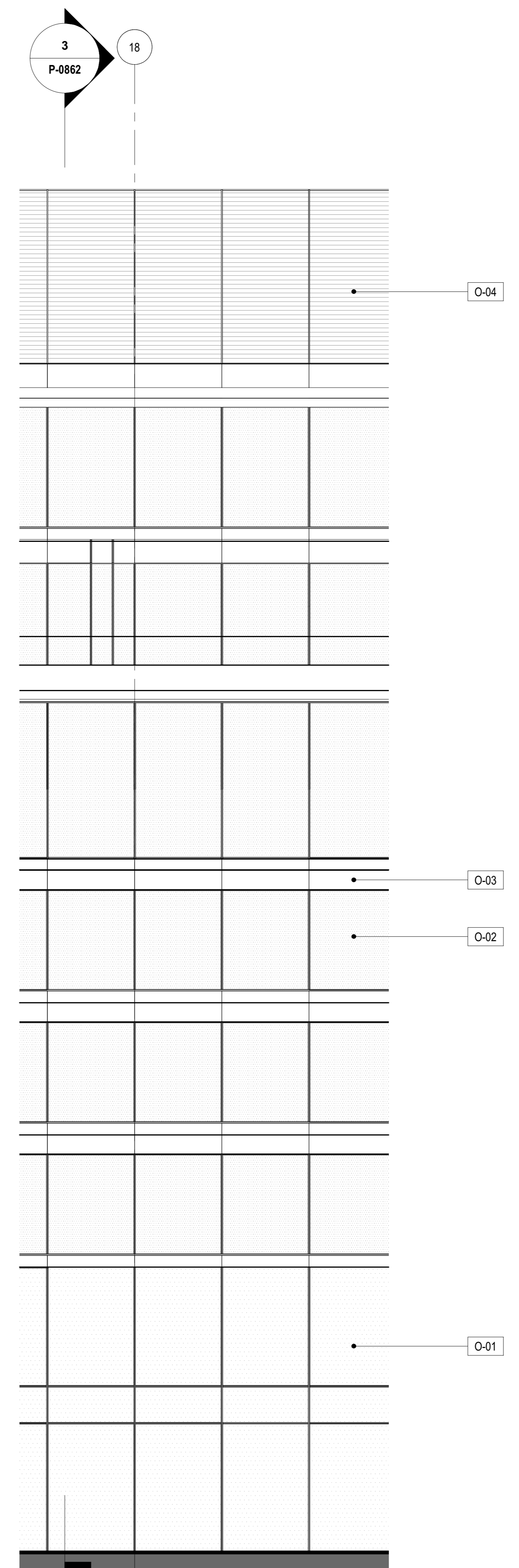
FOOD SERVICE, WASTE MANAGEMENT & LOGISTICS - CNI LITTLE  
 156 2ND STREET, SAN FRANCISCO, CA 94105  
 T. 415-522-5900



PARTIAL 3D MODEL PERSPECTIVE - OFFICE BUILDING 4



PARTIAL SECTION - OFFICE BUILDING 1/8" = 1'-0" 3



PARTIAL ELEVATION - OFFICE BUILDING 1/8" = 1'-0" 2

O-04 METAL LOUVERS  
 PAINTED ALUMINUM STORM LOUVERS BLADE



O-03 OPAQUE PANEL  
 SOLID METAL PANEL, COLOR VARIES



O-02 TRANSPARENT PANEL  
 GLASS AND ALUMINUM WINDOW WALL



O-01 STOREFRONT  
 GLASS AND ALUMINUM / STAINLESS STEEL



\*NOTE: MATERIALS, COLORS, AND FACADE DESIGNS ARE FOR REFERENCE OF QUALITY OF DESIGN AND SUBJECT TO CHANGE FOR SUBMISSION OF BUILDING PERMITS.

OFFICE FACADE MATERIALS 1" = 1'-0" 1

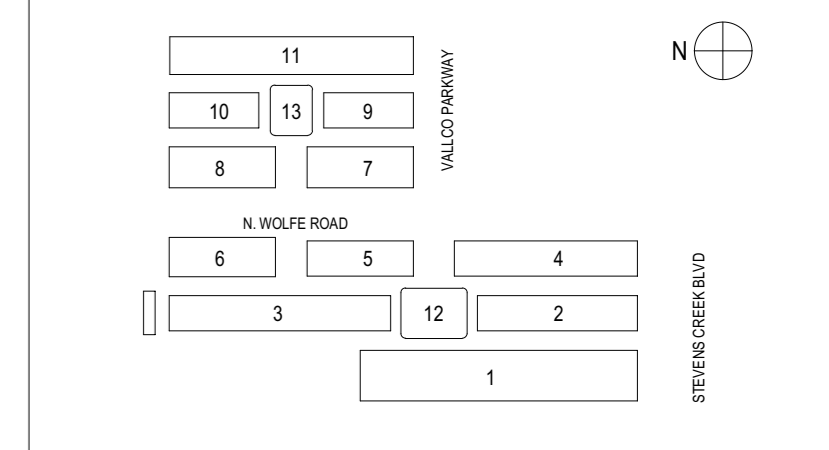


NOT FOR CONSTRUCTION  
 STAMP / SIGNATURE

DISCLAIMER  
 THE ARCHITECT / ENGINEER SHALL HAVE NO RESPONSIBILITY FOR ANY LIABILITY, LOSS, COST, DAMAGE OR EXPENSE ARISING FROM OR RELATING TO ANY USE OF THIS DOCUMENT FOR ANY PURPOSE OTHER THAN ITS INTENDED PURPOSE ON THIS PROJECT. THIS DOCUMENT IS TO BE CONSIDERED IN CONJUNCTION WITH ALL RELATED DOCUMENTATION. ANY DISCREPANCIES IDENTIFIED IN THIS DOCUMENT MUST BE REPORTED IMMEDIATELY TO THE ARCHITECT BEFORE PROCEEDING. CONTRACTORS MUST VERIFY ALL DIMENSIONS PRIOR TO PROCEEDING WITH ANY WORK. ONLY FIGURED DIMENSIONS ARE TO BE USED FOR VERIFICATION.

SB-35 MODIFICATION APPLICATION

REV	DESCRIPTION	DATE
REV-0	SB-35 DEVELOPMENT APPLICATION	03/27/2018
REV-1	SB-35 APPLICATION - CONFORM SET	08/15/2018
REV-2	SB-35 MODIFICATION APPLICATION	03/23/2022



KEY PLAN AND NORTH ARROW  
 ARCHITECTS PROJECT NUMBER: 708.012

IF THIS DRAWING IS NOT 36"x48" IT IS A REDUCED PRINT. REFER TO GRAPHIC SCALE.



FACADE MATERIAL BOARDS

SHEET TITLE: P-0862