

OWNER: VALLEJO PROPERTY OWNER LLC
 385 PAGE MILL ROAD, PALO ALTO, CA 94304
 T: 650-964-1000

ARCHITECTURE: RAFAEL VINOLY ARCHITECTS
 25 VAN DAM STREET, NEW YORK, NY 10013
 T: 212-684-8900

ARCHITECTURE: RAFAEL VINOLY ARCHITECTS
 1025 S. WOLFE ROAD, CUPERTINO, CA 95014
 T: 855-627-7500

LANDSCAPE ARCHITECTURE: CLBN PARTNERSHIP LTD
 100 S. INDEPENDENCE MALL W. SUITE 1102 PHILADELPHIA, PA 19106
 T: 215-486-0020

CIVIL: SANDS CIVIL ENGINEERS SURVEYORS PLANNERS, INC.
 1700 S. WINCHESTER BLVD. SUITE 200, CAMPBELL, CA 95008
 T: 408-226-0900

TRANSPORTATION ENGINEERING: ARUP NORTH AMERICA LTD
 590 MISSION STREET, SUITE 700, SAN FRANCISCO, CA 94105
 T: 415-455-5445

LIGHTING: ONE LUX STUDIO
 126 WEST 20TH STREET, 10TH FLOOR, NEW YORK, NY 10011
 T: 212-209-0720

SIGNAGE: EX-17
 1617 JFK BLVD, SUITE 1005, PHILADELPHIA, PA 19103
 T: 215-981-1900

PARKING ENGINEERING: BATHY DESIGN, INC.
 2099 GATEWAY PLACE, SUITE 550, SAN JOSE, CA 95131
 T: 408-392-7300

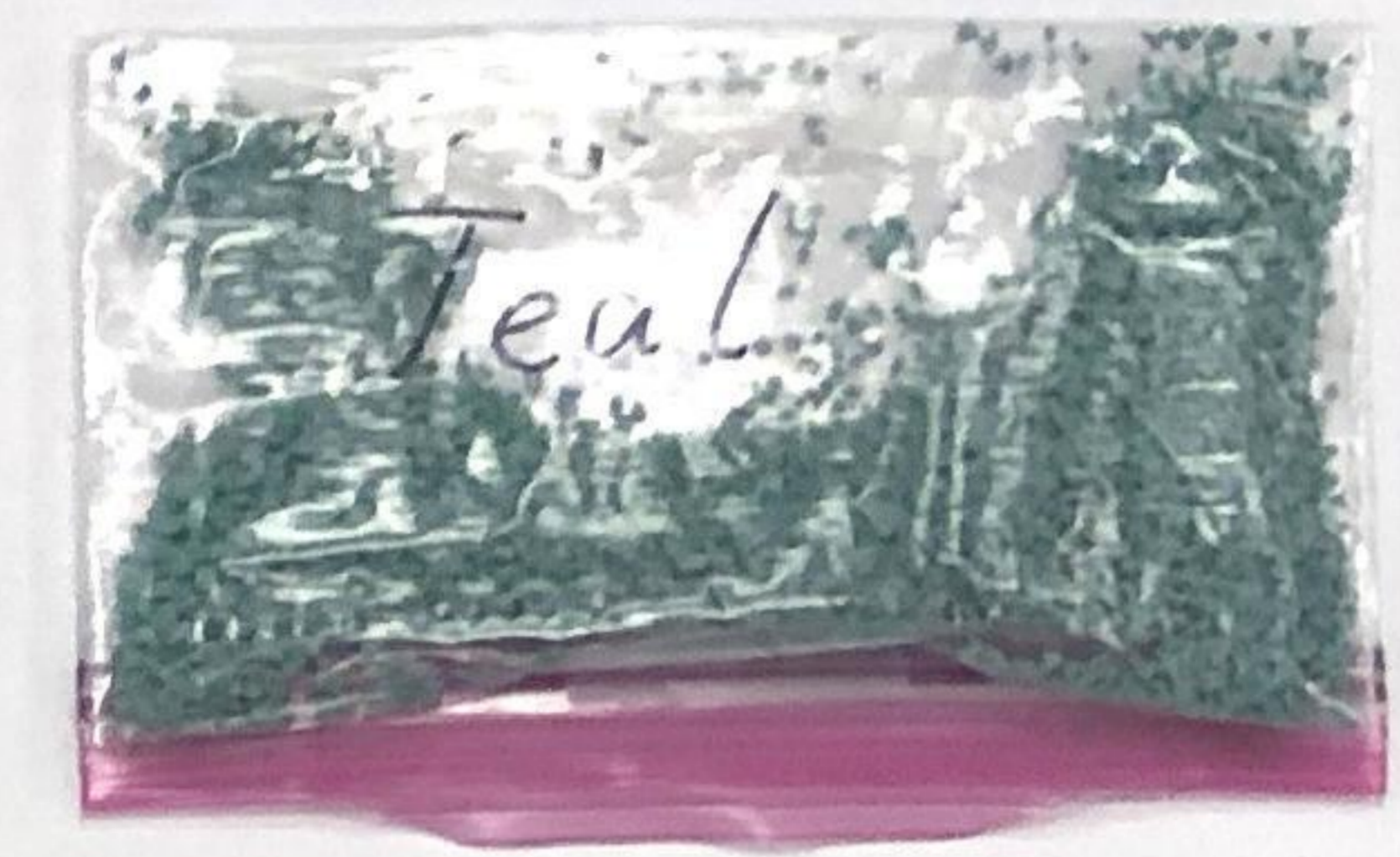
WASTE MANAGEMENT: CUNLITTLE INTERNATIONAL
 132 NORTH BRAND BLVD, STE 110, GLENDALE, CA 91201
 T: 626-441-7700



FLEXIBLE PAVEMENT
 POLICE COURTYARD AND WALKWAY



FLEXIBLE PAVEMENT
 POLICE COURTYARD AND WALKWAY



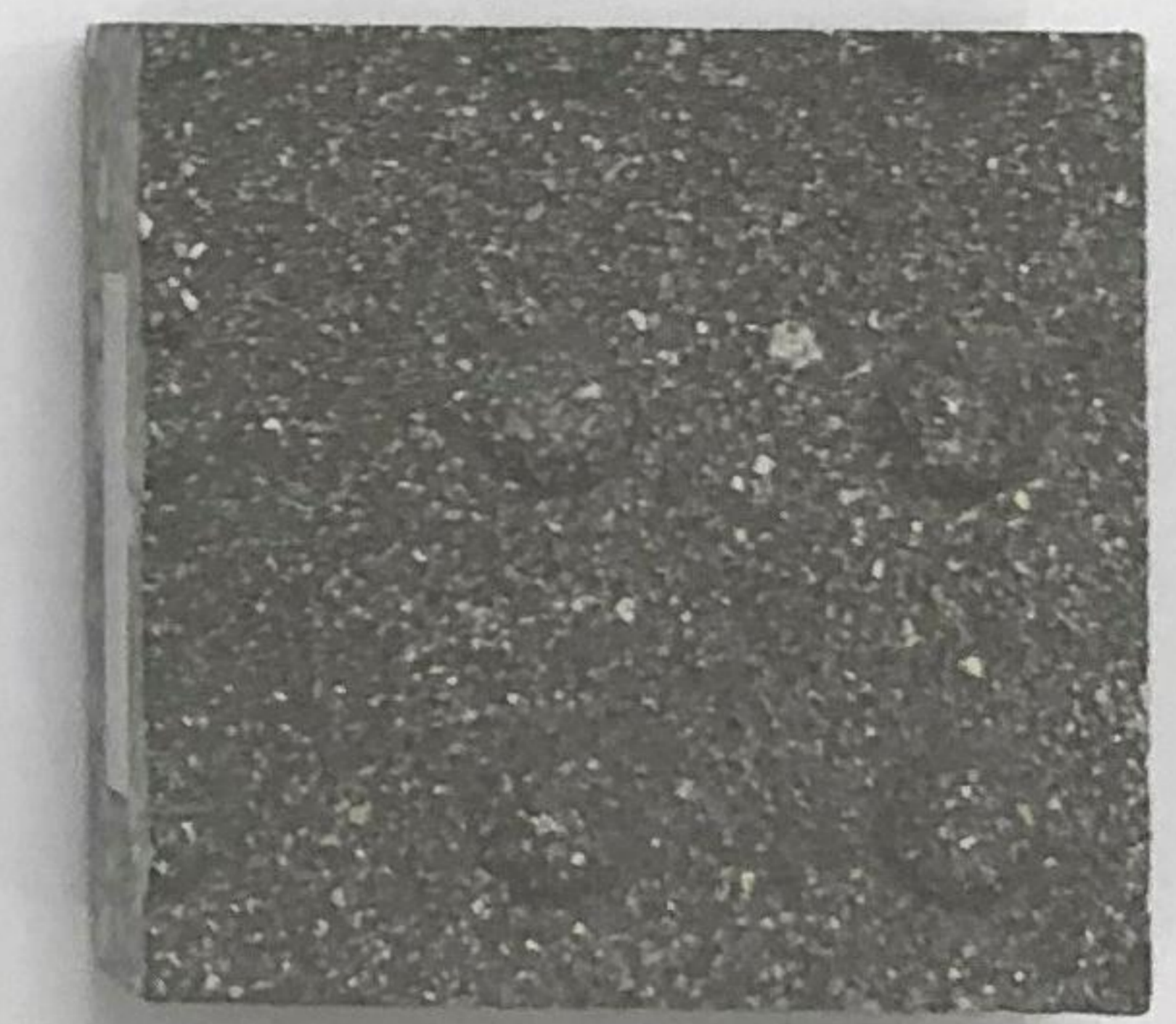
CONCRETE PAVER
 POLICE COURTYARD AND WALKWAY



CONCRETE PAVER
 POLICE COURTYARD AND WALKWAY



SYNTHETIC RESILIENT SURFACING
 POLICE COURTYARD AND WALKWAY



STONE PAVING
 POLICE COURTYARD AND WALKWAY



STONE PAVING
 POLICE COURTYARD AND WALKWAY

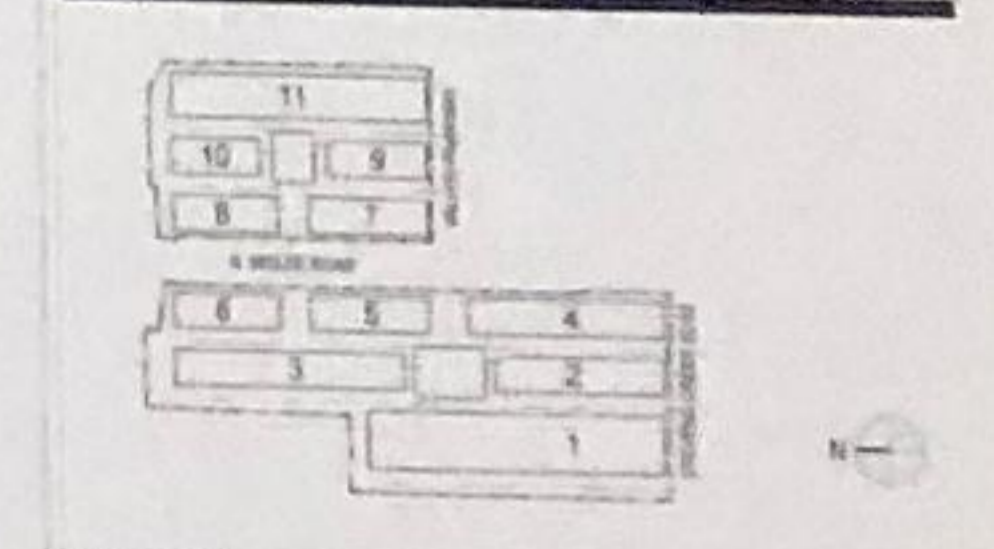


NOT FOR CONSTRUCTION

DISCLAIMER
 THE ARCHITECT / ENGINEER SHALL HAVE NO RESPONSIBILITY FOR ANY LIABILITY, LOSS, COST, DAMAGE OR EXPENSE ARISING FROM OR RELATING TO ANY USE OF THIS DOCUMENT FOR ANY PURPOSE OTHER THAN ITS INTENDED PURPOSE. ON THIS PROJECT, THIS DOCUMENT IS TO BE CONSIDERED IN CONJUNCTION WITH ALL RELATED DOCUMENTATION. ANY DISCREPANCIES IDENTIFIED IN THIS DOCUMENT MUST BE REPORTED IMMEDIATELY TO THE ARCHITECT BEFORE PROCEEDING. CONTRACTORS MUST VERIFY ALL DIMENSIONS PRIOR TO PROCEEDING WITH ANY WORK. ONLY FIGURED DIMENSIONS ARE TO BE USED FOR VERIFICATION.

SB-35 DEVELOPMENT APPLICATION

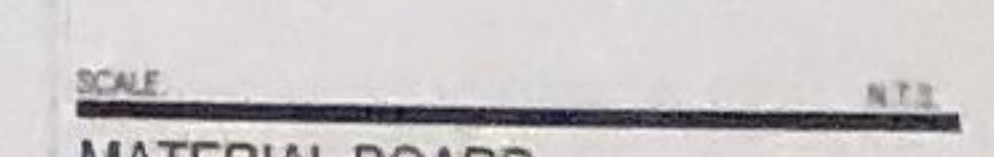
REV	DESCRIPTION	DATE
REV-0	SB-35 APPLICATION REVISIONS	06/22/2018



KEY PLAN AND NORTH ARROW
 ARCHITECT'S PROJECT NUMBER: 708001

PROJECT PHASE: SB-35 DEVELOPMENT APPLICATION

IF THIS DRAWING IS NOT SHOWN AT A REDUCED PRINT SCALE, REFER TO GRAPHIC SCALE.



SCALE: N.T.S.
MATERIAL BOARD - LANDSCAPE

SHEET TITLE

P-0861.04
 SHEET NUMBER