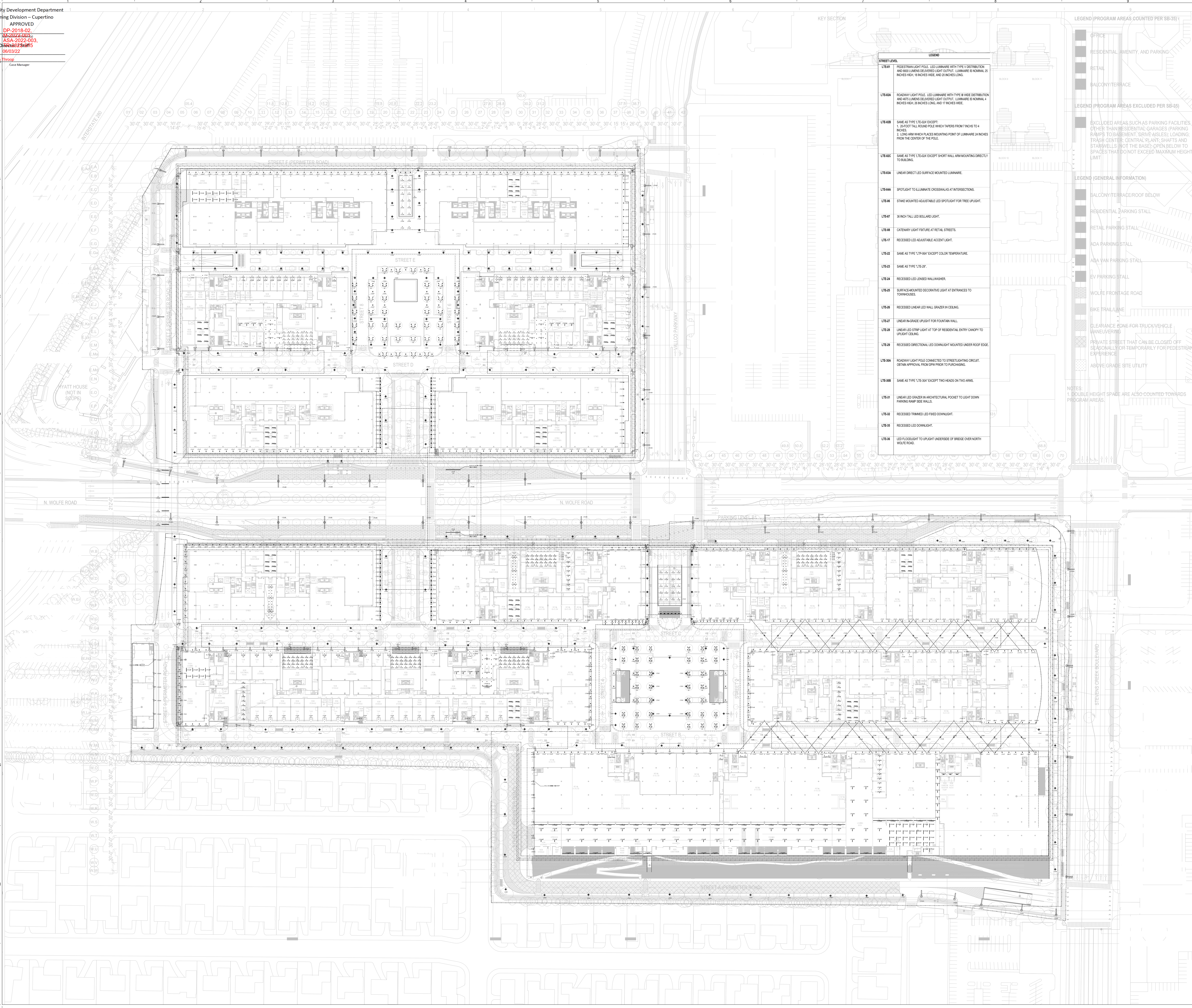


OWNER - VALICO PROPERTY OWNER LLC
 2600 EL CAMINO REAL, SUITE 410, PALO ALTO, CA 94306
 T. 650-344-1500
 ARCHITECTURE - RAFAEL VINOLY ARCHITECTS
 315 PEARL STREET, 31ST FLOOR, NEW YORK, NY 10038
 T. 212-624-5050
 ARCHITECTURE - RAFAEL VINOLY ARCHITECTS
 10123 N. WOLFE ROAD, CUPERTINO, CA 95014
 T. 408-627-7090
 LANDSCAPE ARCHITECTURE - OLIN PARTNERSHIP LTD.
 1817 JOHN F. KENNEDY BLVD, SUITE 1000, PHILADELPHIA, PA 19103
 T. 215-442-0030
 CIVIL - SANDS CIVIL ENGINEERS SURVEYORS PLANNERS, INC.
 1700 S. WINCHESTER BLVD, SUITE 200, CAMPBELL, CA 95008
 T. 408-638-0000
 TRAFFIC - KIMLEY-HORN AND ASSOCIATES, INC.
 100 W. SAN FERNANDO STREET, SUITE 230, SAN JOSE, CA 95113
 T. 668-800-4130
 LIGHTING DESIGN - ONE LUX STUDIO
 156 WEST 29TH STREET, 10TH FLOOR, NEW YORK, NY 10011
 T. 212-262-5750
 SIGNAGE & WAYFINDING - EXIT DESIGN
 725 N. 4TH STREET, PHILADELPHIA, PA 19123
 T. 482-561-1556
 PARKING ENGINEERING - WATRY DESIGN, INC.
 2099 GATEWAY PLACE, SUITE 550, SAN JOSE, CA 95110
 T. 408-262-7200
 FOOD SERVICE, WASTE MANAGEMENT & LOGISTICS - CHN-LITTLE
 156 2ND STREET, SAN FRANCISCO, CA 94105
 T. 415-522-5900



STREET LEVEL

LEGEND

LTE-01	PEDESTRIAN LIGHT POLE, LED LUMINAIRE WITH TYPE V DISTRIBUTION AND BUSH LUMENS DELAYED LIGHT OUTPUT, LUMINAIRE 8 NOMINAL 15 INCHES HIGH, 11 INCHES WIDE, AND 20 INCHES LONG.
LTE-02A	ROADWAY LIGHT POLE, LED LUMINAIRE WITH TYPE B WIDE DISTRIBUTION AND BUSH LUMENS DELAYED LIGHT OUTPUT, LUMINAIRE 8 NOMINAL 4 INCHES HIGH, 26 INCHES LONG, AND 17 INCHES WIDE.
LTE-02B	SAME AS TYPE LTE-02A EXCEPT: 1. 30 FOOT TALL ROUND POLE WHICH TAPER FROM 7 INCHES TO 4 INCHES 2. LONG ARM WHICH PLACES MOUNTING POINT OF LUMINAIRE 24 INCHES FROM THE CENTER OF THE POLE.
LTE-02C	SAME AS TYPE LTE-02A EXCEPT SHORT WALL ARM MOUNTING DIRECTLY TO BUILDING.
LTE-03A	LINEAR DIRECT LED SURFACE MOUNTED LUMINAIRE.
LTE-04A	SPOTLIGHT TO ILLUMINATE CROSSWALKS AT INTERSECTIONS.
LTE-04B	STAKE MOUNTED ADJUSTABLE LED SPOTLIGHT FOR TREE UPLIGHT.
LTE-04C	3 INCH TALL BOLLARD LIGHT.
LTE-04D	GATEWAY LIGHT FIXTURE AT RETAIL STREETS.
LTE-05	RECESSED LED ADJUSTABLE ACENT LIGHT.
LTE-06	SAME AS TYPE LTE-05A EXCEPT COLOR TEMPERATURE.
LTE-07	SAME AS TYPE LTE-07P.
LTE-08	RECESSED LED LINED WALL WASHER.
LTE-09	SURFACE MOUNTED DECORATIVE LIGHT AT ENTRANCES TO TOWNHOMES.
LTE-10	RECESSED LINEAR LED WALL GRAZER IN CEILING.
LTE-11	LINEAR IN GRADE UPLIGHT FOR FOUNTAIN WALL.
LTE-12	LINEAR LED STRIP LIGHT AT TOP OF RESIDENTIAL ENTRY CANOPY TO UPLIGHT CEILING.
LTE-13	RECESSED DIRECTIONAL LED DOWNLIGHT MOUNTED UNDER ROOF EDGE.
LTE-14A	ROADWAY LIGHT POLE CONNECTED TO STREET LIGHTING CIRCUIT. OBTAIN APPROVAL FROM CPW PRIOR TO PURCHASING.
LTE-14B	SAME AS TYPE LTE-14A EXCEPT TWO HEADS ON TWO ARMS.
LTE-15A	LINEAR LED GRAZER IN ARCHITECTURAL POCKET TO UPLIGHT DOWN PARKING RAMP SIDE WALLS.
LTE-15B	RECESSED TRIMMED LED FRED DOWNLIGHT.
LTE-15C	RECESSED LED DOWNLIGHT.
LTE-16	LED FLOODLIGHT TO UPLIGHT UNDERSIDE OF BRIDGE OVER NORTH WOLFE ROAD.

LEGEND (PROGRAM AREAS COUNTED PER SB-35)

- OFFICE
- RESIDENTIAL, AMENITY, AND PARKING
- RETAIL
- BALCONY/TERRACE

LEGEND (PROGRAM AREAS EXCLUDED PER SB-35)

- EXCLUDED AREAS SUCH AS PARKING FACILITIES OTHER THAN RESIDENTIAL GARAGES (PARKING RAMP, TO BASEMENT, DRIVE AISLES), LOADING TRUCK CENTER, CENTRAL PLANT, SHAFTS AND STAIRWELLS, NOT THE BASE, OPEN BELOW TO SPACES THAT DO NOT EXCEED MAXIMUM HEIGHT LIMIT.

LEGEND (GENERAL INFORMATION)

- BALCONY/TERRACE/ROOF BELOW
- RESIDENTIAL PARKING STALL
- RETAIL PARKING STALL
- ADA PARKING STALL
- ADA VAN PARKING STALL
- EV PARKING STALL
- WOLFE FRONTAGE ROAD
- BIKE TRAILLINE
- CLEARANCE ZONE FOR TRUCK/VEHICLE MANEUVERING
- PRIVATE STREET THAT CAN BE CLOSED OFF SEASONALLY OR TEMPORARILY FOR PEDESTRIAN EXPERIENCE
- ABOVE GRADE SITE UTILITY

NOTES

1. DOUBLE HEIGHT SPACE ARE ALSO COUNTED TOWARDS PROGRAM AREAS.

NOT FOR CONSTRUCTION

STAMP / SIGNATURE

DISCLAIMER
 THE ARCHITECT / ENGINEER SHALL HAVE NO RESPONSIBILITY FOR ANY LIABILITY, LOSS, COST, DAMAGE OR EXPENSE ARISING FROM OR RELATING TO ANY USE OF THIS DOCUMENT FOR ANY PURPOSE OTHER THAN ITS INTENDED PURPOSE ON THIS PROJECT. THIS DOCUMENT IS TO BE CONSIDERED IN CONJUNCTION WITH ALL RELATED DOCUMENTATION. ANY DISCREPANCIES IDENTIFIED IN THIS DOCUMENT MUST BE REPORTED IMMEDIATELY TO THE ARCHITECT BEFORE PROCEEDING. CONTRACTORS MUST VERIFY ALL DIMENSIONS PRIOR TO PROCEEDING WITH ANY WORK. ONLY FIGURED DIMENSIONS ARE TO BE USED FOR VERIFICATION.

SB-35 MODIFICATION APPLICATION

REV	DESCRIPTION	DATE
REV-0	SB-35 DEVELOPMENT APPLICATION	03/27/2018
REV-1	SB-35 APPLICATION - REVISION	08/05/2018
REV-2	SB-35 APPLICATION CORRECTIVE SET	01/15/2019
REV-3	SB-35 MODIFICATION APPLICATION	03/23/2022

