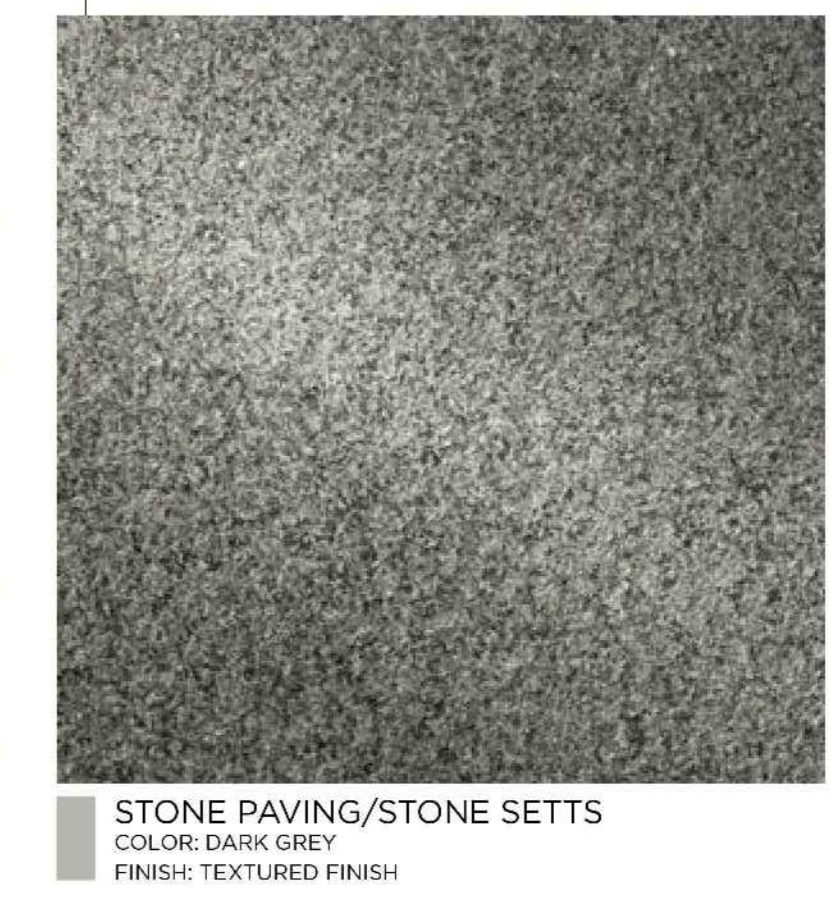
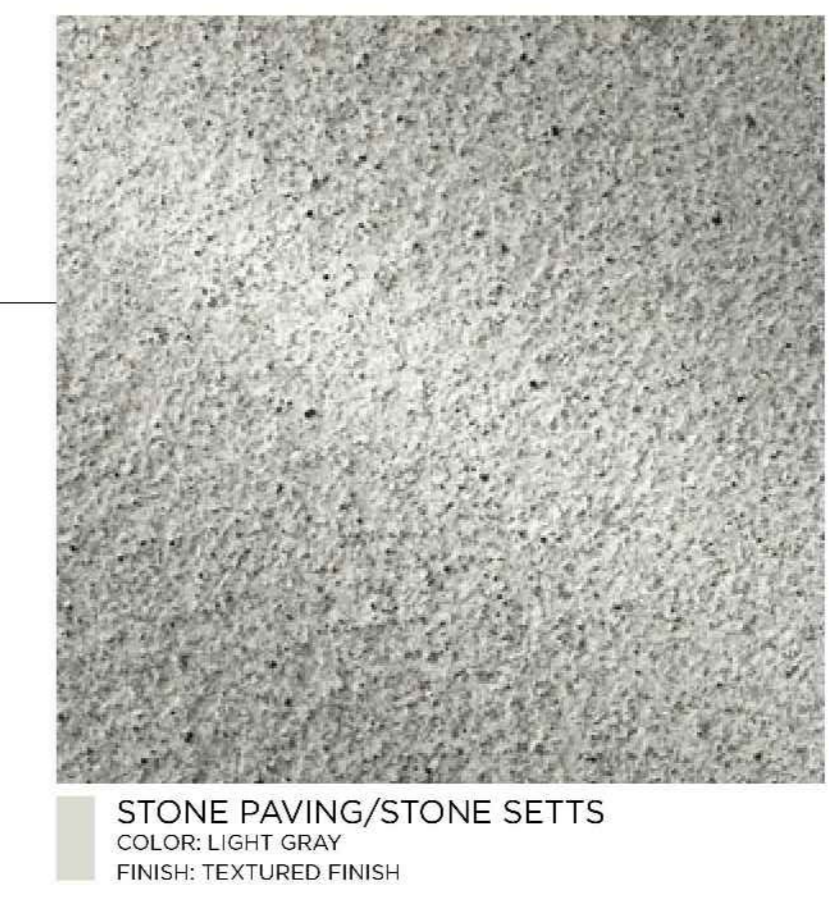
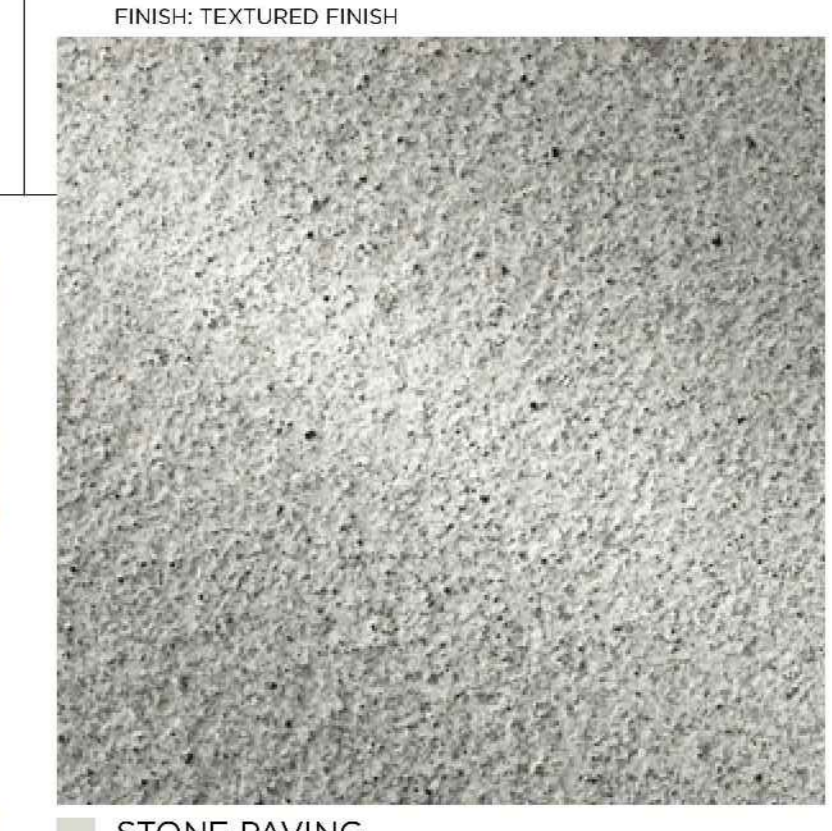
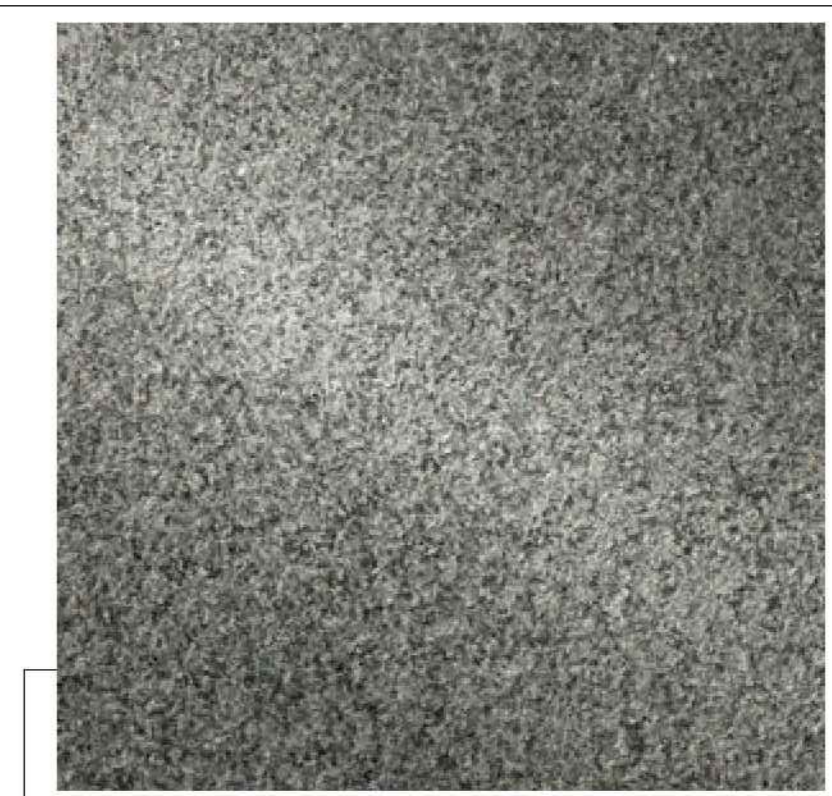
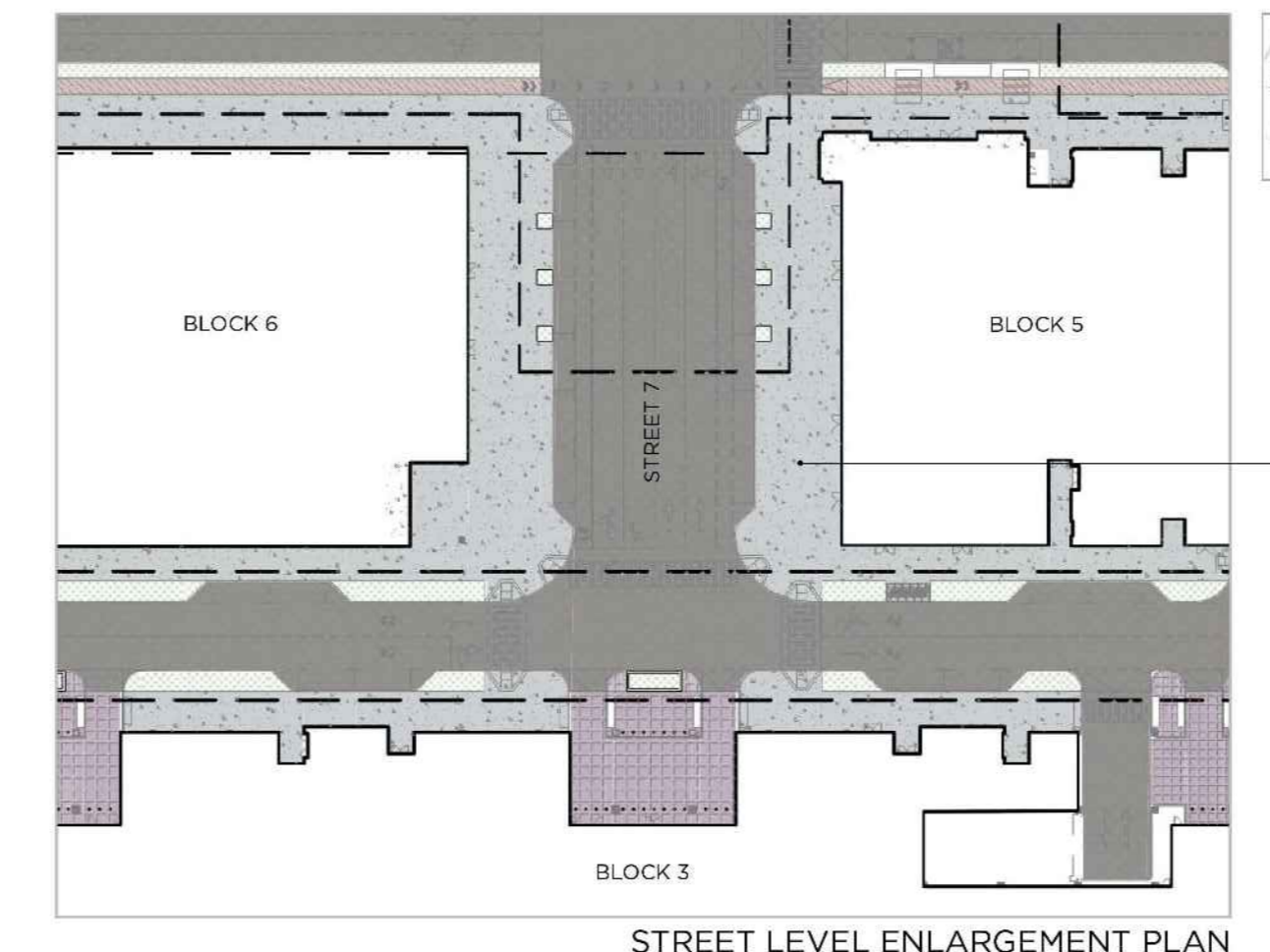
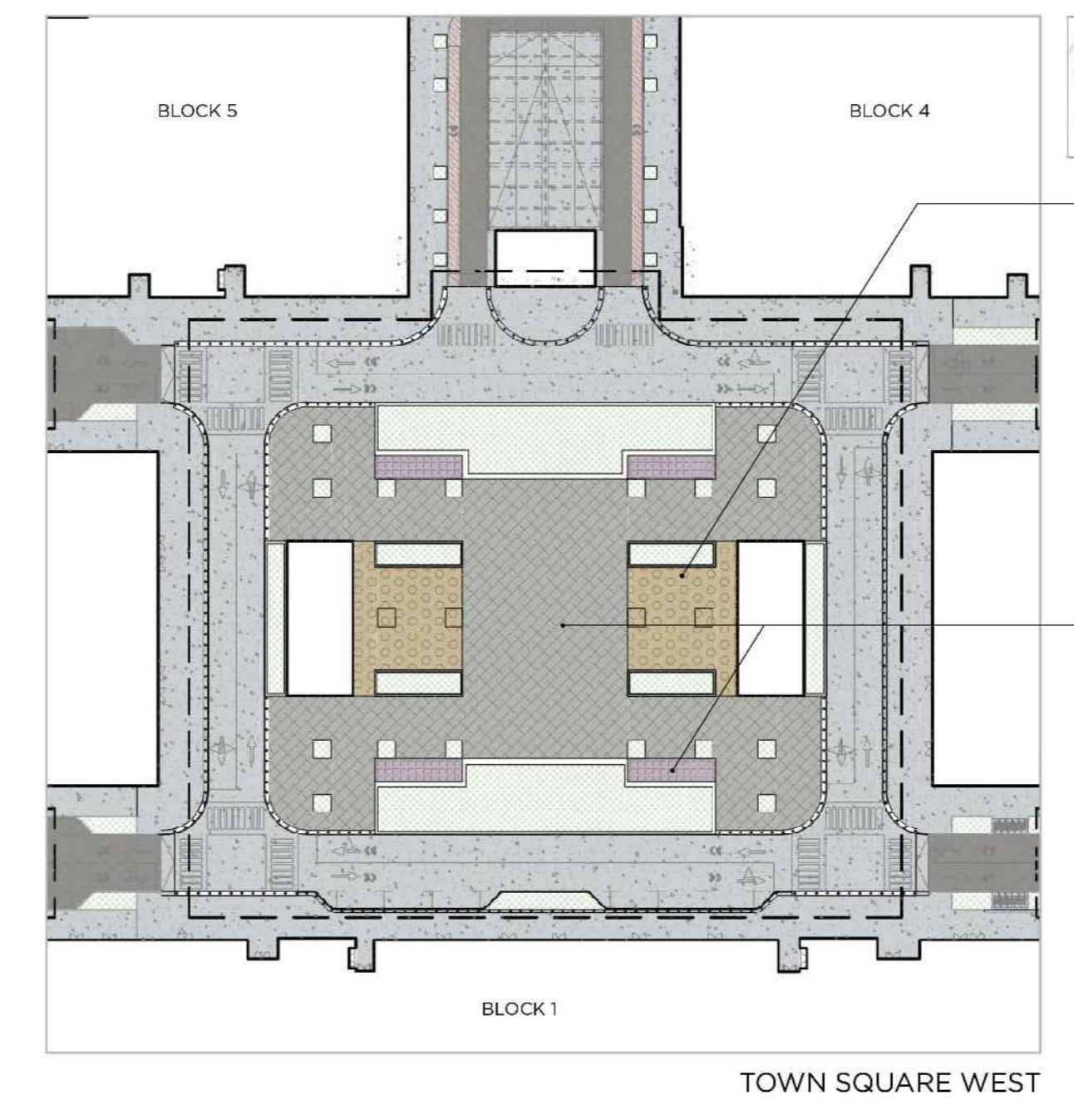
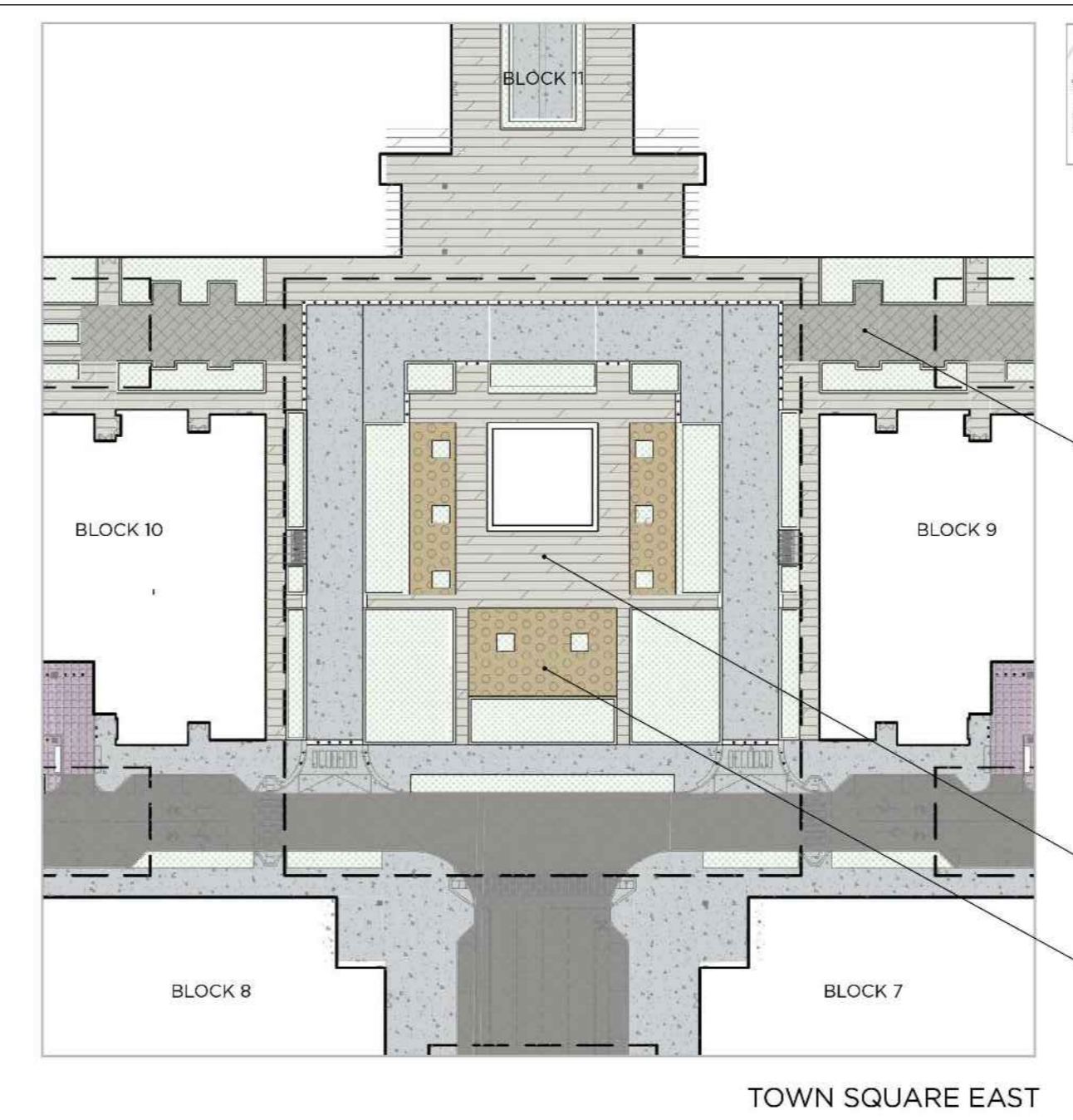
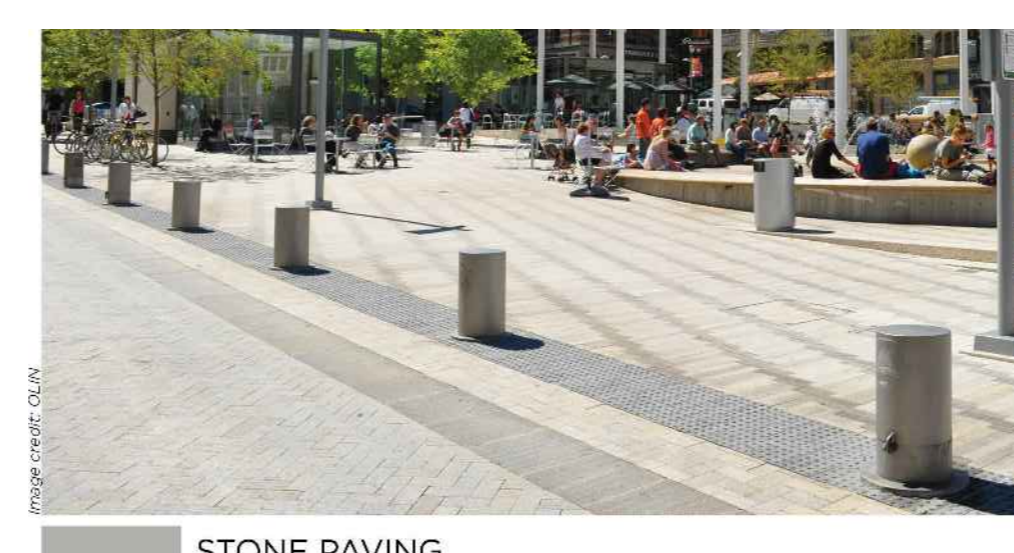
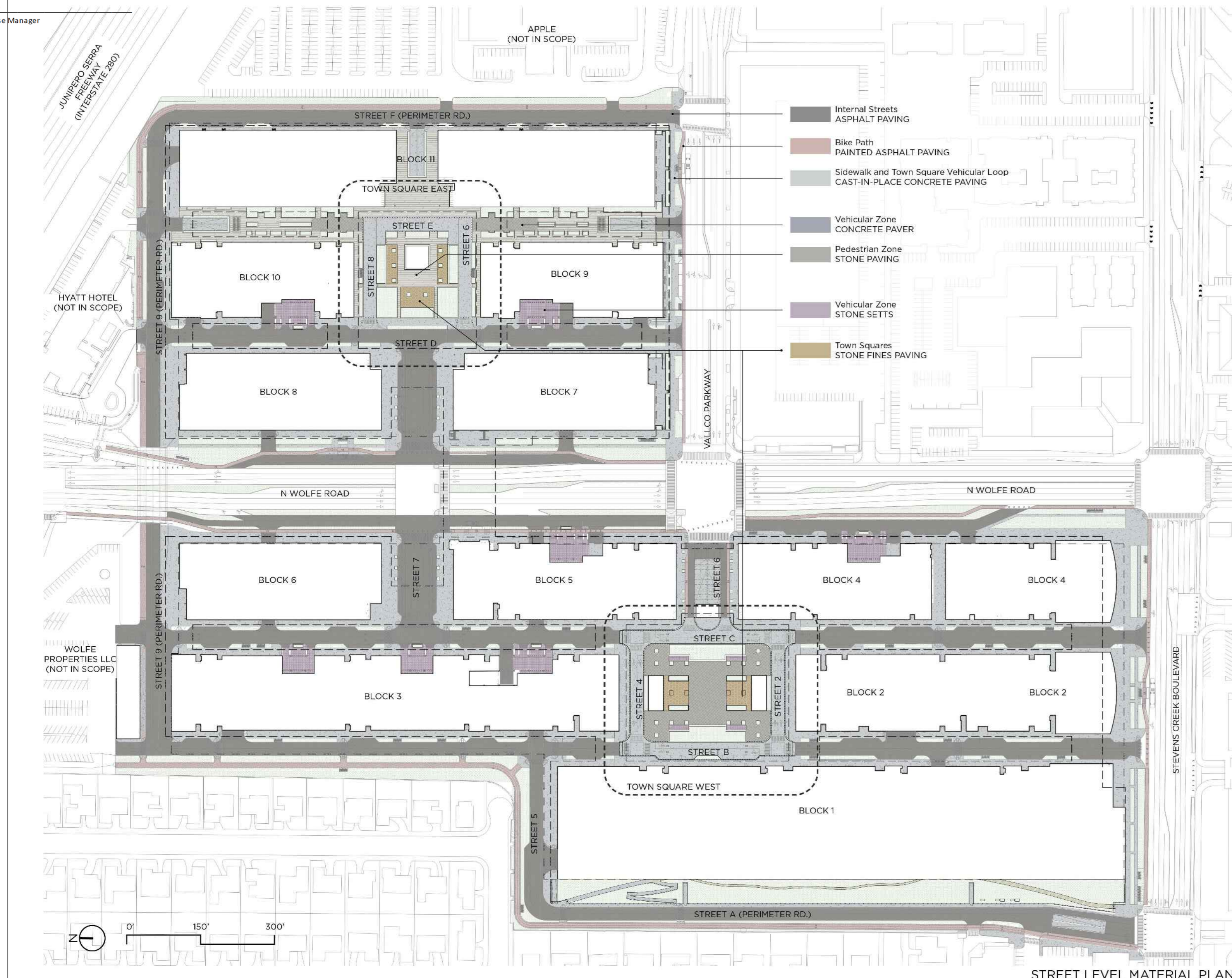


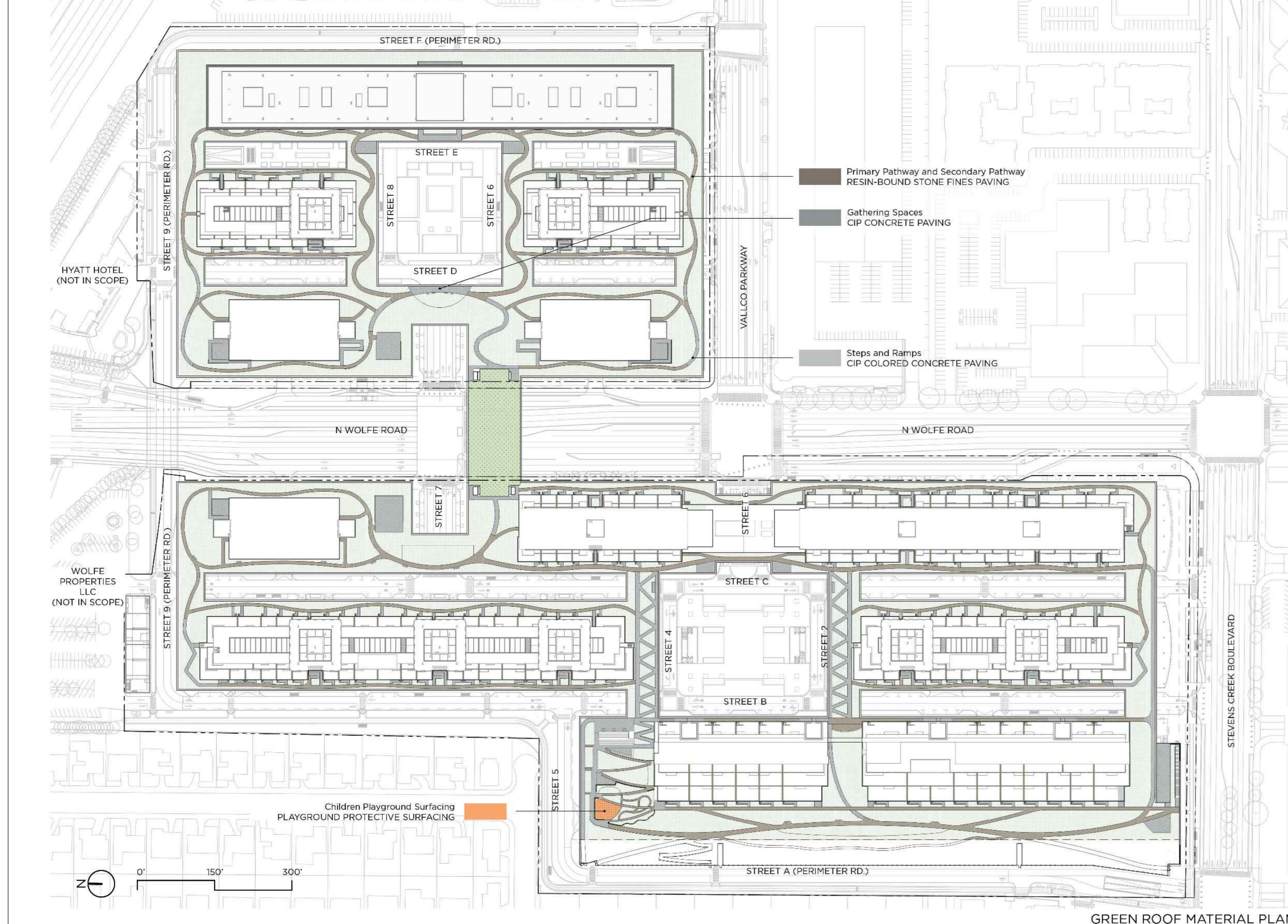
# THE RISE

## PAVING: STREET LEVEL

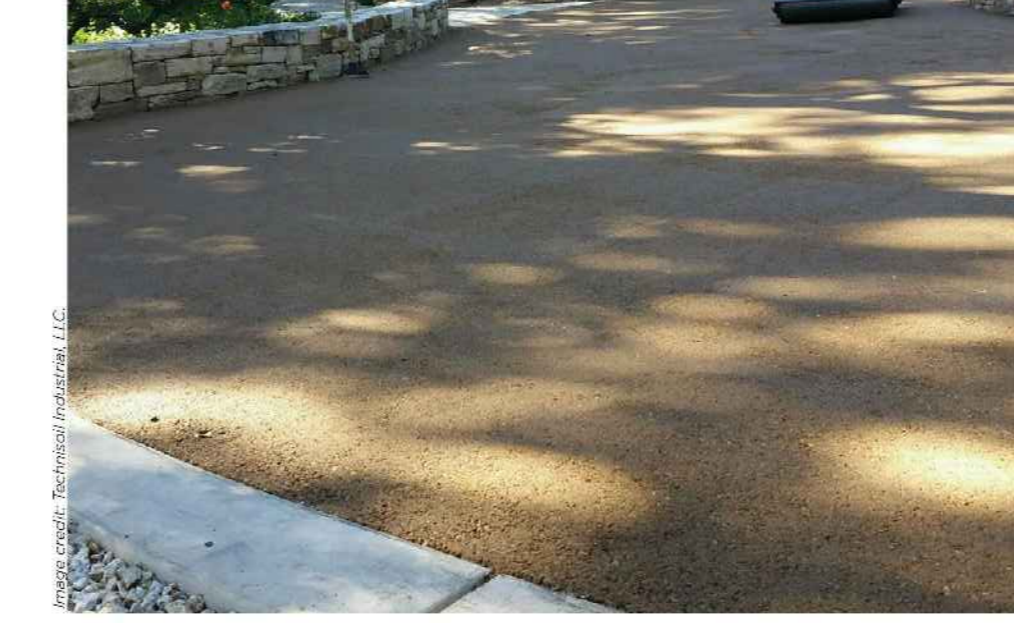


# THE RISE

## PAVING: GREEN ROOF LEVEL



### PRECEDENT IMAGES



# THE RISE

OWNER - VALLO PROPERTY OWNER LLC  
 2600 EL CAMINO REAL, SUITE 410, PALO ALTO, CA 94308  
 T. 650-344-1500

ARCHITECTURE - RAFAEL VINOLY ARCHITECTS  
 375 PEARL STREET, 31ST FLOOR, NEW YORK, NY 10038  
 T. 212-924-5050

ARCHITECTURE - RAFAEL VINOLY ARCHITECTS  
 1923 N. WOLFE ROAD, CUPERTINO, CA 95014  
 T. 408-627-7990

LANDSCAPE ARCHITECTURE - OLIN PARTNERSHIP LTD.  
 1817 JOHN F. KENNEDY BLVD, SUITE 1800, PHILADELPHIA, PA 19103  
 T. 215-440-0030

CIVIL - SANDIS CIVIL ENGINEERS SURVEYORS PLANNERS, INC.  
 1700 S. WINCHESTER BLVD, SUITE 200, CAMPBELL, CA 95008  
 T. 408-636-0900

TRAFFIC - KIMLEY-HORN AND ASSOCIATES, INC.  
 100 W. SAN FERNANDO STREET, SUITE 230, SAN JOSE, CA 95113  
 T. 669-800-4130

LIGHTING DESIGN - ONE LUX STUDIO  
 136 WEST 29TH STREET, 10TH FLOOR, NEW YORK, NY 10011  
 T. 212-201-5750

SIGNAGE & WAYFINDING - EXIT DESIGN  
 725 N. 4TH STREET, PHILADELPHIA, PA 19123  
 T. 215-651-1950

PARKING ENGINEERING - WATRY DESIGN, INC.  
 2099 GATEWAY PLACE, SUITE 550, SAN JOSE, CA 95110  
 T. 408-392-7900

FOOD SERVICE, WASTE MANAGEMENT & LOGISTICS - CON-LITTLE  
 156 2ND STREET, SAN FRANCISCO, CA 94105  
 T. 415-922-5900

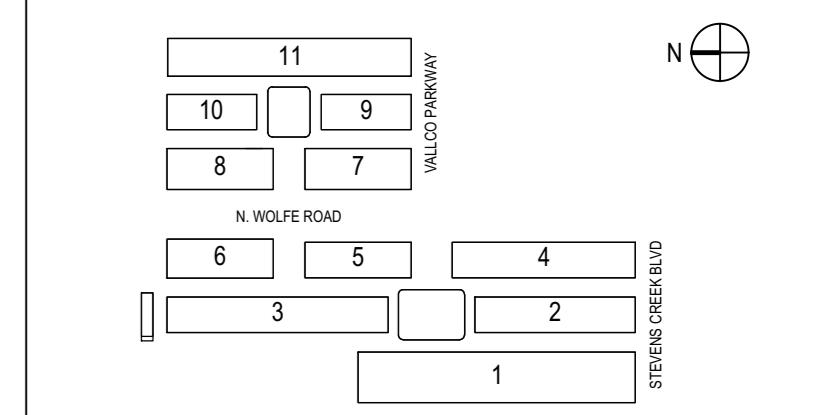


**NOT FOR CONSTRUCTION**  
 STAMP / SIGNATURE

**DISCLAIMER**  
 THE ARCHITECT / ENGINEER SHALL HAVE NO RESPONSIBILITY FOR ANY LIABILITY, LOSS, COST, DAMAGE OR EXPENSE ARISING FROM OR RELATING TO ANY USE OF THIS DOCUMENT FOR ANY PURPOSE OTHER THAN ITS INTENDED PURPOSE ON THIS PROJECT. THIS DOCUMENT IS TO BE CONSIDERED IN CONJUNCTION WITH ALL RELATED DOCUMENTATION. ANY DISCREPANCIES IDENTIFIED IN THIS DOCUMENT MUST BE REPORTED IMMEDIATELY TO THE ARCHITECT BEFORE PROCEEDING. CONTRACTORS MUST VERIFY ALL DIMENSIONS PRIOR TO PROCEEDING WITH ANY WORK. ONLY FIGURED DIMENSIONS ARE TO BE USED FOR VERIFICATION.

### SB-35 MODIFICATION APPLICATION

REV	DESCRIPTION	DATE
REV-0	SB-35 APPLICATION - REVISIONS	08/22/2018
REV-1	SB-35 APPLICATION CONFORM SET	08/15/2018
REV-2	SB-35 MODIFICATION APPLICATION	02/22/2022



ARCHITECTS PROJECT NUMBER: 708.012

IF THIS DRAWING IS NOT 36"x48" IT IS A REDUCED PRINT. REFER TO GRAPHIC SCALE

### MATERIALS BOARD

SHEET TITLE:  
**P-0612**