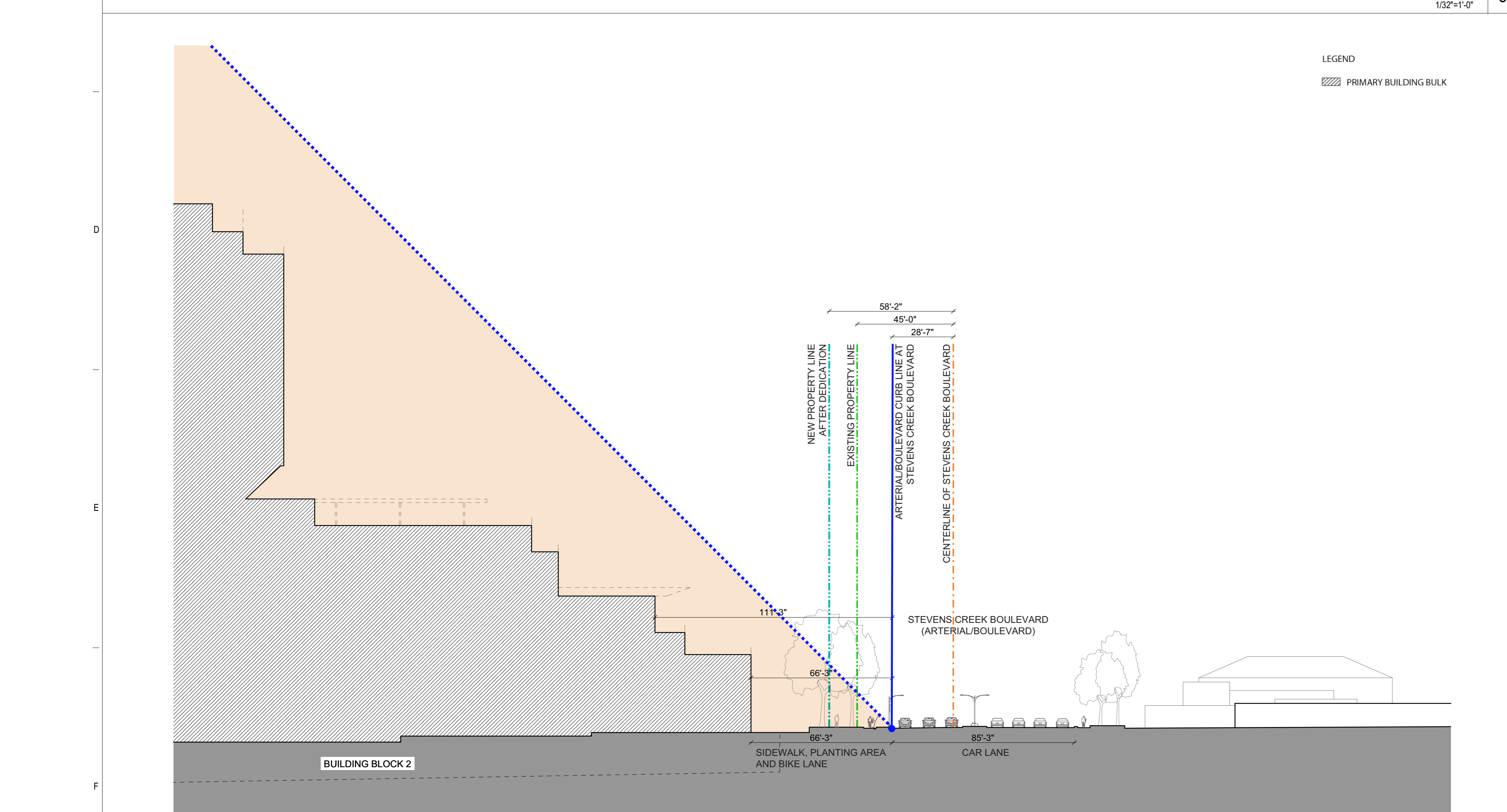


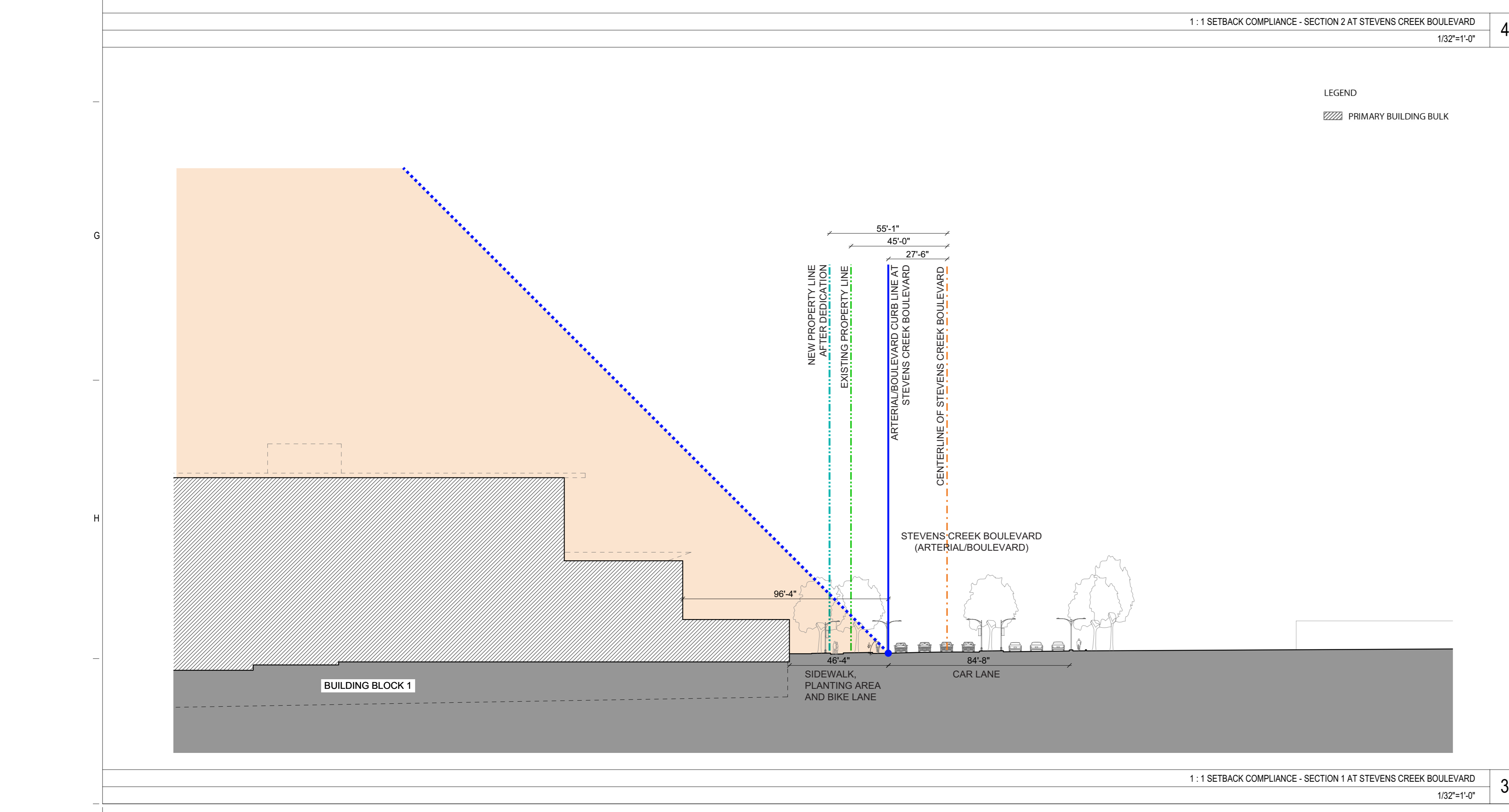
1:1 SETBACK COMPLIANCE - SECTION 1 AT STEVENS CREEK BOULEVARD  
132'-11/4"

LEGEND  
PRIMARY BUILDING BULK



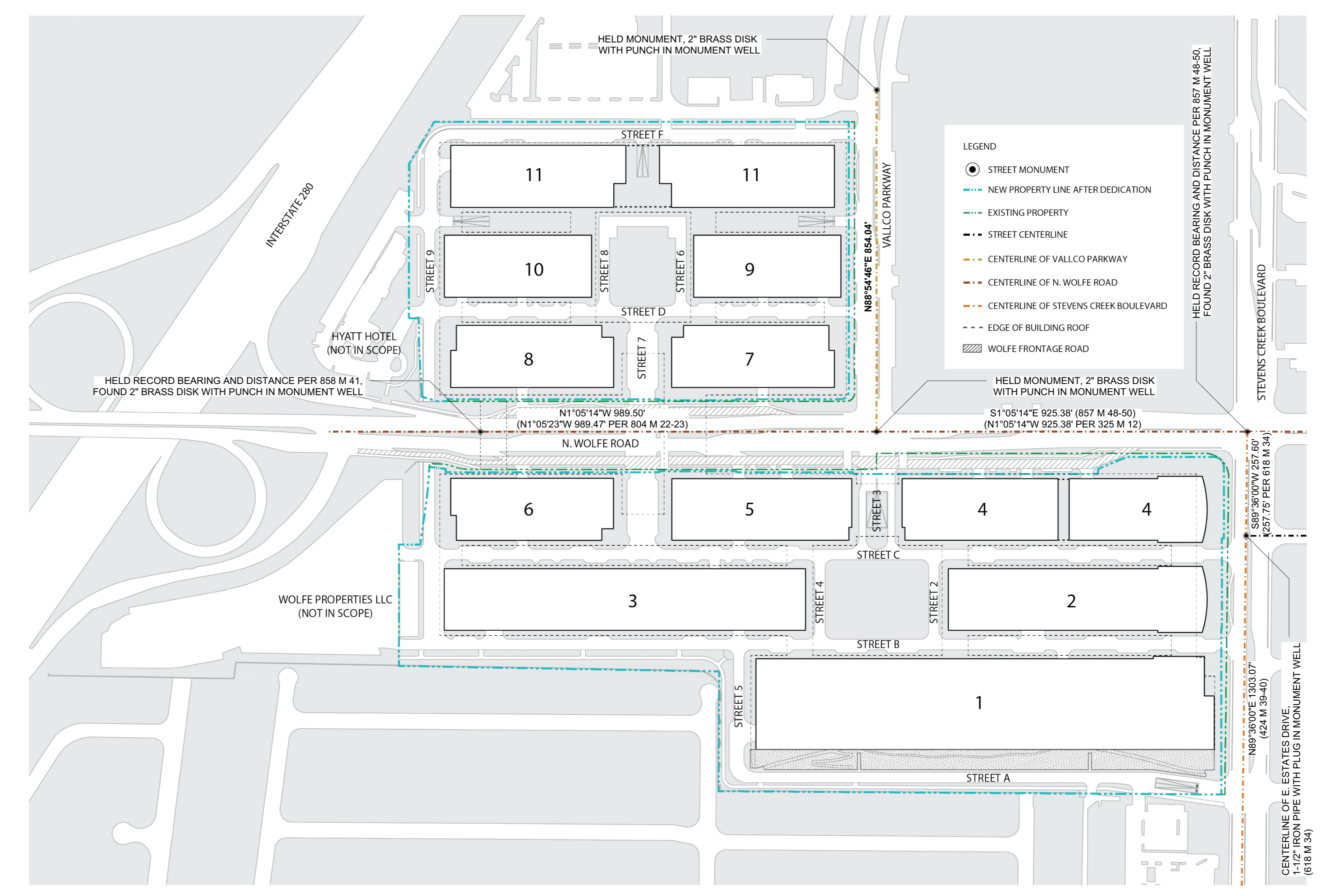
1:1 SETBACK COMPLIANCE - SECTION 2 AT STEVENS CREEK BOULEVARD  
132'-11/4"

LEGEND  
PRIMARY BUILDING BULK



1:1 SETBACK COMPLIANCE - SECTION 3 AT STEVENS CREEK BOULEVARD  
132'-11/4"

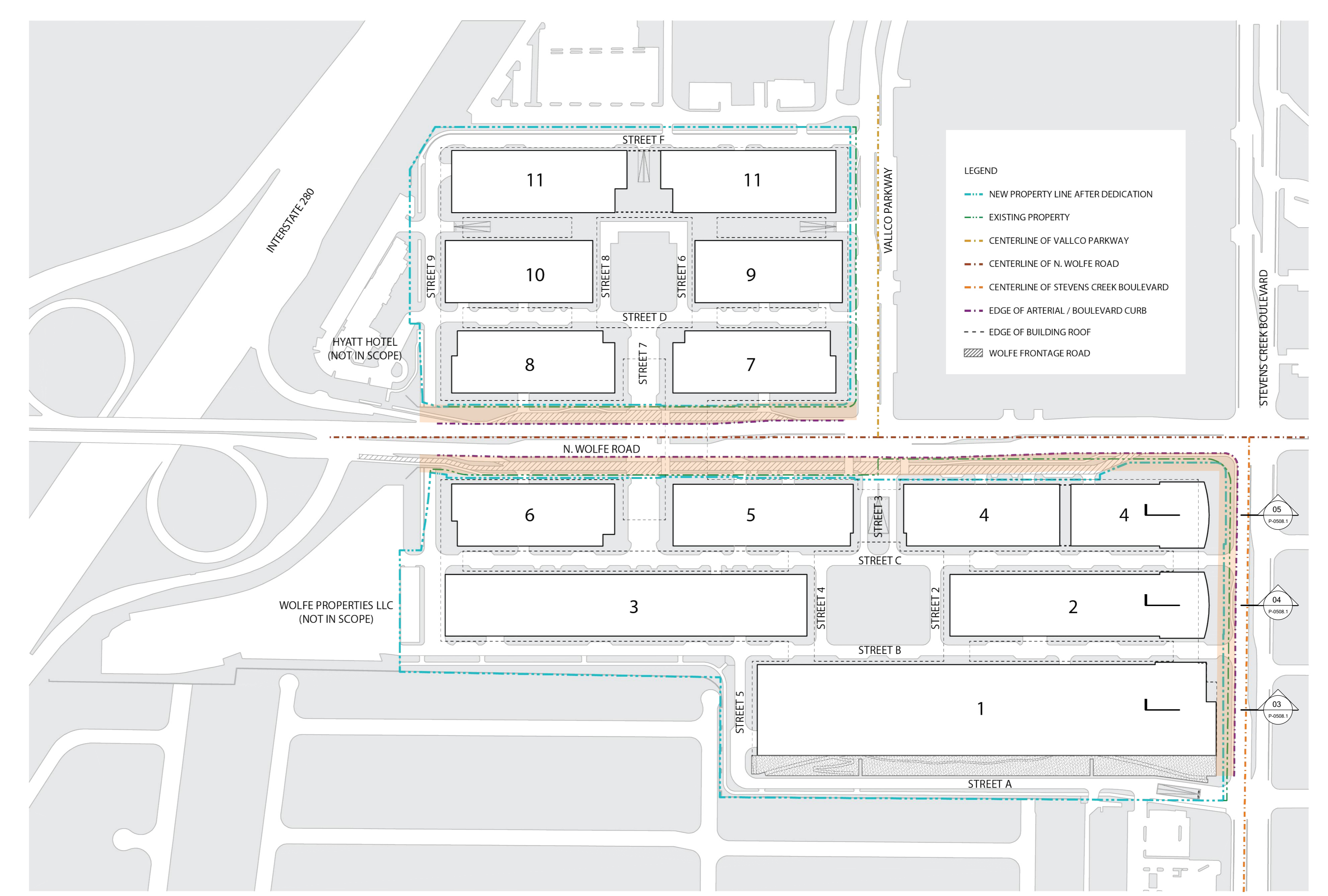
LEGEND  
PRIMARY BUILDING BULK



NOTE:  
DIAGRAMS ARE ILLUSTRATIVE FOR INFORMATION ONLY.

BASIS OF BEARINGS:  
THE BEARING NORTH 88°54'46" EAST BETWEEN TWO FOUND 2" BRASS DISK MONUMENTS ALONG THE CENTERLINE OF VALLYCO PARKWAY, AS SHOWN ON THE PANEL MAP FILED IN BOOK 804 OF MAPS, PAGES 22-23, WAS USED AS THE BASIS OF ALL BEARINGS SHOWN.

STREET MONUMENT EXHIBIT  
N.T.S. 2



NOTE:  
DIAGRAMS ARE ILLUSTRATIVE FOR INFORMATION ONLY.

SETBACK COMPLIANCE DIAGRAM (1:1 PLANE AT STEVENS CREEK BOULEVARD)  
N.T.S. 1

# THE RISE

OWNER - VALLYCO PROPERTY OWNER LLC  
2000 EL CAMINO REAL, SUITE 410, PALO ALTO, CA 94306  
T. 650-344-1500

ARCHITECTURE - RAFAEL VINOLY ARCHITECTS  
315 PEARL STREET, 31ST FLOOR, NEW YORK, NY 10038  
T. 212-924-0900

ARCHITECTURE - RAFAEL VINOLY ARCHITECTS  
10123 N. WOLFE ROAD, CUPERTINO, CA 95014  
T. 408-627-7090

LANDSCAPE ARCHITECTURE - OLIN PARTNERSHIP LTD.  
1817 JOHN F. KENNEDY BLVD, SUITE 1000, PHILADELPHIA, PA 19103  
T. 214-440-0030

CIVIL - SANDS CIVIL ENGINEERS SURVEYORS PLANNERS, INC.  
1700 S. WINCHESTER BLVD, SUITE 200, CAMPBELL, CA 95008  
T. 408-638-0900

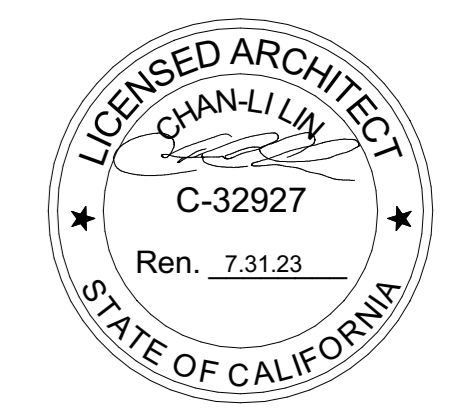
TRAFFIC - KIMLEY-HORN AND ASSOCIATES, INC.  
1001 W. SAN FERNANDO STREET, SUITE 200, SAN JOSE, CA 95113  
T. 669-800-4130

LIGHTING DESIGN - ONE LUX STUDIO  
150 WEST 29TH STREET, 10TH FLOOR, NEW YORK, NY 10001  
T. 212-201-5790

SIGNAGE & WAYFINDING - EXIT DESIGN  
725 N. 4TH STREET, PHILADELPHIA, PA 19123  
T. 215-581-1555

PARKING ENGINEERING - WATRY DESIGN, INC.  
2099 GATEWAY PLACE, SUITE 550, SAN JOSE, CA 95110  
T. 408-392-7000

FOOD SERVICE, WASTE MANAGEMENT & LOGISTICS - CAN LITTLE  
156 2ND STREET, SAN FRANCISCO, CA 94105  
T. 415-922-5900



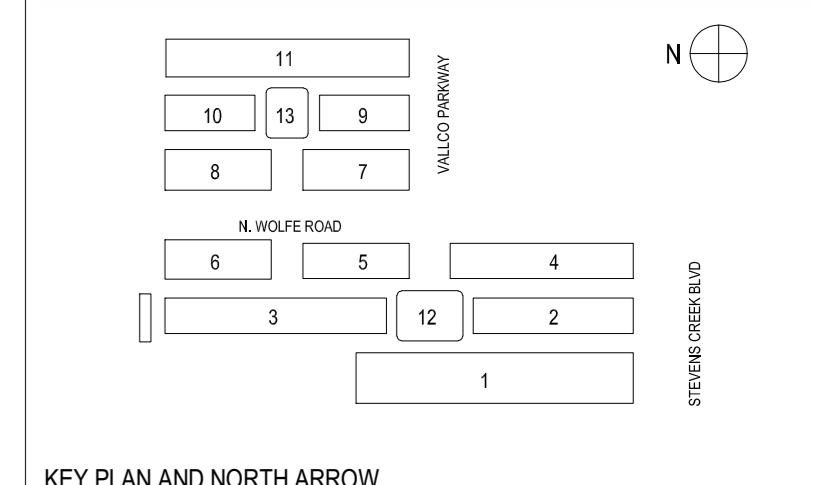
NOT FOR CONSTRUCTION

STAMP / SIGNATURE

DISCLAIMER  
THE ARCHITECT / ENGINEER SHALL HAVE NO RESPONSIBILITY FOR ANY LIABILITY, LOSS, COST, DAMAGE OR EXPENSE ARISING FROM OR RELATING TO ANY USE OF THIS DOCUMENT FOR ANY PURPOSE OTHER THAN ITS INTENDED PURPOSE ON THIS PROJECT. THIS DOCUMENT IS TO BE CONSIDERED IN CONJUNCTION WITH ALL RELATED DOCUMENTATION. ANY DISCREPANCIES IDENTIFIED IN THIS DOCUMENT MUST BE REPORTED IMMEDIATELY TO THE ARCHITECT BEFORE PROCEEDING. CONTRACTORS MUST VERIFY ALL DIMENSIONS PRIOR TO PROCEEDING WITH ANY WORK. ONLY FOUR-DIGIT DIMENSIONS ARE TO BE USED FOR VERIFICATION.

## SB-35 MODIFICATION APPLICATION

REV	DESCRIPTION	DATE
REV-0	SB-35 MODIFICATION APPLICATION	03/23/2022



KEY PLAN AND NORTH ARROW

ARCHITECTS PROJECT NUMBER 708.012

IF THIS DRAWING IS NOT 36"X48" IT IS A REDUCED PRINT. REFER TO GRAPHIC SCALE

SCALE NOT TO SCALE

## SITE DIAGRAMS - SETBACK COMPLIANCE FOR PRIMARY BUILDING BULK

SHEET TITLE  
**P-0508.01**

SHEET NUMBER