

**WATER POLLUTION CONTROL DRAWING LEGEND**

- STABILIZED DIRT (TC-1) (P-0412)
- CONCRETE WASHOUT (M-2) (P-0412)
- FIBER ROLL (SC-2) (P-0412)
- CONSTRUCTION FENCE
- SILT FENCE
- GRAVEL BAG BERM
- INLET PROTECTION (SC-10) (P-0412)
- SITE STORMWATER DISCHARGE POINT / SAMPLING LOCATION
- APPROXIMATE AREA OF CONSTRUCTION DISTURBANCE - AREA TO COMPLY WITH REQUIREMENTS IN PROJECT SWPPP

**WATER POLLUTION CONTROL NOTES**

- A. TEMPORARY CONSTRUCTION ENTRANCE/EXIT LOCATION SHOWN IS APPROXIMATE. CONTRACTOR TO PROVIDE LOCATION WHERE APPROPRIATE.
- B. THIS PLAN REPRESENTS POSSIBLE WATER POLLUTION CONTROL MEASURES INCLUDING EROSION CONTROL AND SEDIMENT CONTROL.
- C. EXISTING SURFACES SHALL BE UNDISTURBED TO THE EXTENT PRACTICAL.
- D. GROUND WATER SHALL NOT BE DISCHARGED WITH STORM WATER. GROUND WATER DEWATERING OPERATIONS SHALL BE COORDINATED AS NEEDED WITH OWNER.
- E. CONTRACTOR SHALL PROVIDE EFFECTIVE SOIL COVER FOR AREAS OF CONSTRUCTION ACTIVITY THAT HAVE BEEN DISTURBED AND ARE NOT SCHEDULED TO BE ACTIVE FOR AT LEAST 14 DAYS.
- F. ALL EROSION CONTROL AND SEDIMENT CONTROLS TO BE OBTAINED INSTALLED AND MAINTAINED AS REQUIRED IN PROJECT SWPPP.
- G. CONTRACTOR TO INSTALL RUN-ON AND RUN-OFF CONTROL MEASURES ACCORDING TO PLANS OR AS NECESSARY TO ENSURE SEDIMENT IS NOT TRANSPORTED FROM SITE.
- H. CONTRACTOR TO PROVIDE BACK-UP EROSION PREVENTION MEASURES (SOIL STABILIZATION) WITH SEDIMENT CONTROL MEASURES SUCH AS STRAW MATS, SILT FENCE, GRAVEL INLET FILTERS, AND/OR SEDIMENT TRAPS OR BASINS. ENSURE CONTROL MEASURES ARE ADEQUATE IN PLACE, AND IN OPERABLE CONDITIONS. SEDIMENT CONTROLS, INCLUDING INLET PROTECTION, ARE NECESSARY BUT SHOULD BE A SECONDARY DEFENSE BEHIND GOOD EROSION CONTROL MEASURES.
- I. STOCKPILE LOCATION(S) TO BE DETERMINED BY THE CONTRACTOR. COORDINATE WITH SITE GSP.
- J. ALL CONCRETE TRUCKS TO USE CHUTE WASH BUCKETS FOR CONCRETE RINSE. ALL CONCRETE PUMPS TO CAPTURE CONCRETE RINSE IN SECONDARY CONTAINMENT AND PROPERLY DISPOSE.
- K. STREET SWEEPING SHALL BE CHECKED DAILY TO ENSURE DEPOSITED SEDIMENT AND DEBRIS DOES NOT ENTER THE STORM DRAIN SYSTEM. USE REGENERATIVE VACUUM STREET CLEANER TO MITIGATE AIR AND WATER POLLUTION.
- L. RUNOFF THAT HAS CONTACTED AMENDED SOIL AREAS SHALL NOT BE ALLOWED TO LEAVE THE SITE OR ENTER THE STORM DRAIN SYSTEM.
- M. PRIOR TO PERMIT, A SWPPP WILL BE FILED WITH THE STATE WATER RESOURCES CONTROL BOARD AND WILL SUPERSEDE THIS SHEET. THE SWPPP WILL CONFORM TO ALL STATE REQUIREMENTS.
- N. AN APPROVED PEDESTRIAN ACCESS ALONG STEVENS CREEK BOULEVARD AND N. WOLFE ROAD MUST BE MAINTAINED DURING ALL PHASES OF CONSTRUCTION.
- O. VEHICULAR ACCESS TO THE NEIGHBORING PROPERTY SHALL BE MAINTAINED DURING ALL PHASES OF CONSTRUCTION.

**VALLCO TOWN CENTER**

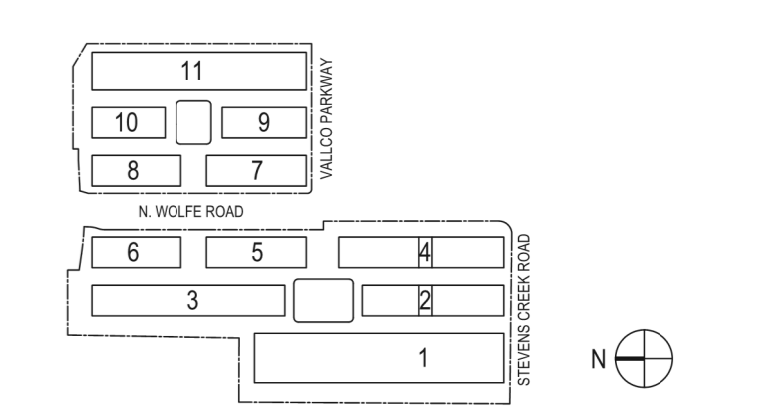
OWNER - VALLCO PROPERTY OWNER LLC  
 965 PAGE MILL ROAD, PALO ALTO, CA 94304  
 T. 650-344-1500  
 ARCHITECTURE - RAFAEL VINYOLY ARCHITECTS  
 50 VANDAM STREET, NEW YORK, NY 10013  
 T. 212-924-5000  
 ARCHITECTURE - RAFAEL VINYOLY ARCHITECTS  
 1033 N. WOLFE ROAD, CUPERTINO CA 95014  
 T. 408-627-7000  
 LANDSCAPE ARCHITECTURE - OLIN PARTNERSHIP LTD.  
 193 S. INDEPENDENCE HALL, W. SHITE 1123, PHILADELPHIA, PA 19108  
 T. 215-440-0000  
 CIVIL - SANDS CIVIL ENGINEERS SURVEYORS PLANNERS, INC.  
 1705 S. WINCHESTER BLVD., SUITE 200, CAMPBELL, CA 95008  
 T. 408-636-0500  
 TRANSPORTATION ENGINEERING - ARUP NORTH AMERICA, LTD.  
 860 MISSION STREET SUITE 700 SAN FRANCISCO CA 94105  
 T. 415-957-9445  
 LIGHTING - ONE LUX STUDIO  
 158 WEST 29TH STREET, 10TH FLOOR, NEW YORK, NY 10001  
 T. 212-301-9750  
 SIGNAGE - EXIT  
 1817 JFK BLVD, SUITE 1665, PHILADELPHIA, PA 19103  
 T. 215-961-1500  
 PARKING ENGINEERING - WATRY DESIGN, INC.  
 2090 GATEWAY PLACE, SUITE 550, SAN JOSE, CA 95110  
 T. 408-992-7500  
 WASTE MANAGEMENT - CINLITTLE INTERNATIONAL  
 535 NORTH BRAN BLVD, STE 710 GLENDALE, CA 92103  
 T. 825-441-7700

**NOT FOR CONSTRUCTION**

DISCLAIMER  
 THE ARCHITECT/ENGINEER SHALL HAVE NO RESPONSIBILITY FOR ANY LIABILITY, LOSS, COST, DAMAGE OR EXPENSE ARISING FROM OR RELATING TO ANY USE OF THIS DOCUMENT FOR ANY PURPOSE OTHER THAN ITS INTENDED PURPOSE ON THIS PROJECT. THIS DOCUMENT IS TO BE CONSIDERED IN CONJUNCTION WITH ALL RELATED DOCUMENTATION. ANY DISCREPANCIES IDENTIFIED IN THIS DOCUMENT MUST BE REPORTED IMMEDIATELY TO THE ARCHITECT BEFORE PROCEEDING. CONTRACTORS MUST VERIFY ALL DIMENSIONS PRIOR TO PROCEEDING WITH ANY WORK. ONLY FIGURED DIMENSIONS ARE TO BE USED FOR VERIFICATION.

**SB-35 DEVELOPMENT APPLICATION**

REV	DESCRIPTION	DATE
REV.0	SB-35 DEVELOPMENT APPLICATION	03/27/2018
REV.1	SB-35 APPLICATION REVISIONS	06/06/2018
REV.2	SB-35 APPLICATION CONFORM SET	09/15/2018



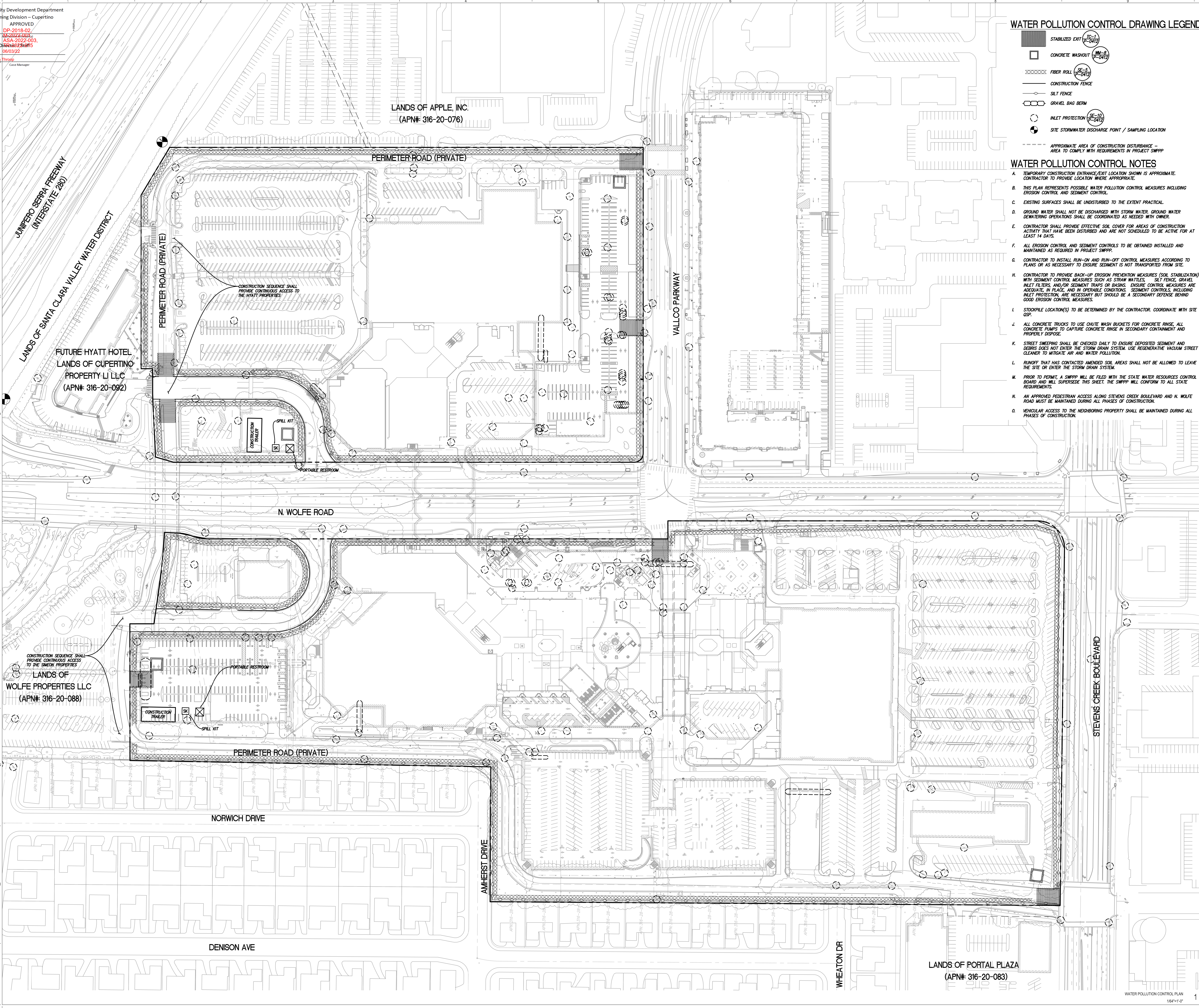
KEY PLAN AND NORTH ARROW  
 ARCHITECTS PROJECT NUMBER: 708011  
 PROJECT PHASE: SB-35 DEVELOPMENT APPLICATION

IF THIS DRAWING IS NOT 36"x48" IT IS A REDUCED PRINT. REFER TO GRAPHIC SCALE.



**WATER POLLUTION CONSTRUCTION PLAN**

SHEET TITLE:  
**P-0411**



LANDS OF APPLE, INC.  
 (APN# 316-20-076)

FUTURE HYATT HOTEL  
 LANDS OF CUPERTINO  
 PROPERTY LI LLC  
 (APN# 316-20-092)

LANDS OF  
 WOLFE PROPERTIES LLC  
 (APN# 316-20-088)

LANDS OF PORTAL PLAZA  
 (APN# 316-20-083)