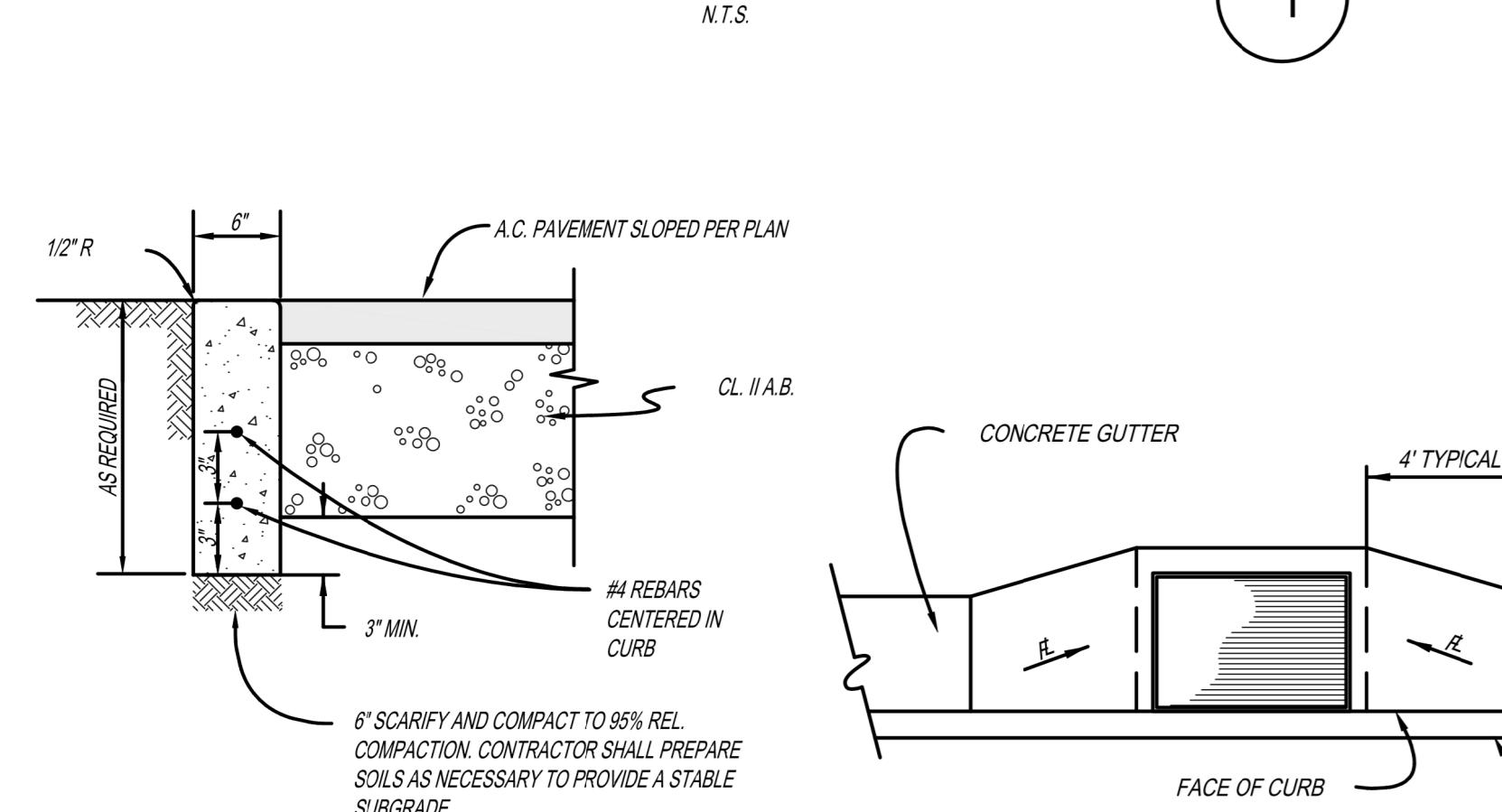
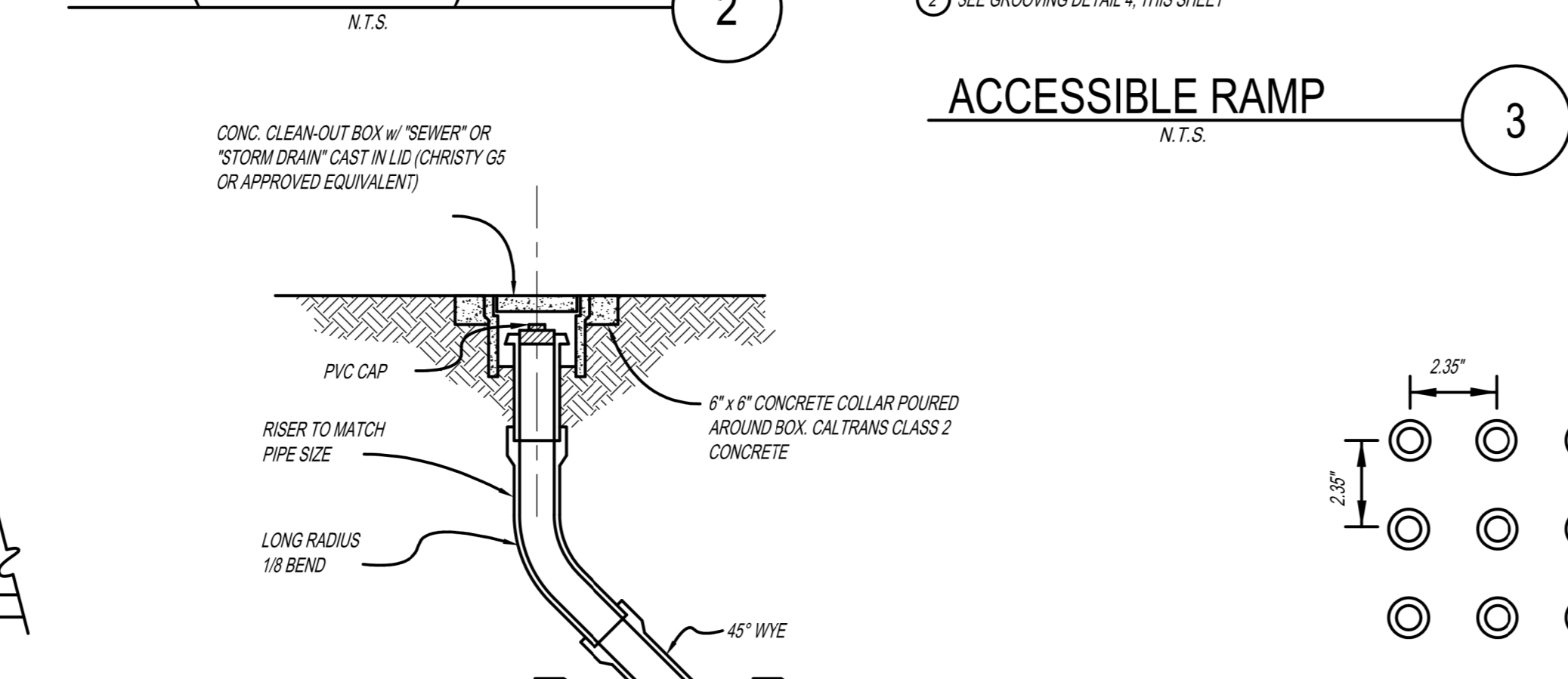


OWNER - VALLCO PROPERTY OWNER LLC  
 965 PAGE MILL ROAD, PALO ALTO, CA 94304  
 T. 650-344-1500  
 ARCHITECTURE - RAFAEL VINYOL ARCHITECTS  
 50 VANDAM STREET, NEW YORK, NY 10013  
 T. 212-924-5000  
 LANDSCAPE ARCHITECTURE - OLIN PARTNERSHIP LTD.  
 150 S. INDEPENDENCE MALL, W. SUITE 1102, PHILADELPHIA, PA 19106  
 T. 215-440-0000  
 CIVIL - SANDS CIVIL ENGINEERS SURVEYORS PLANNERS, INC.  
 1700 S. WINCHESTER BLVD., SUITE 200, CAMPBELL, CA 95008  
 T. 408-636-0000  
 TRANSPORTATION ENGINEERING - ARUP NORTH AMERICA, LTD.  
 880 MISSION STREET, SUITE 700 SAN FRANCISCO CA 94105  
 T. 415-957-9445  
 LIGHTING - ONE LUX STUDIO  
 158 WEST 29TH STREET, 10TH FLOOR, NEW YORK, NY 10001  
 T. 212-301-9790  
 SIGNAGE - EX-IT  
 1817 JFK BLVD, SUITE 1865, PHILADELPHIA, PA 19103  
 T. 215-561-1050  
 PARKING ENGINEERING - WATRY DESIGN, INC.  
 2096 GATEWAY PLACE, SUITE 550, SAN JOSE, CA 95110  
 T. 408-392-7000  
 WASTE MANAGEMENT - CN-LITTLE INTERNATIONAL  
 535 NORTH BRAN BLVD, STE 710 GLENDALE, CA 92103  
 T. 825-441-7700

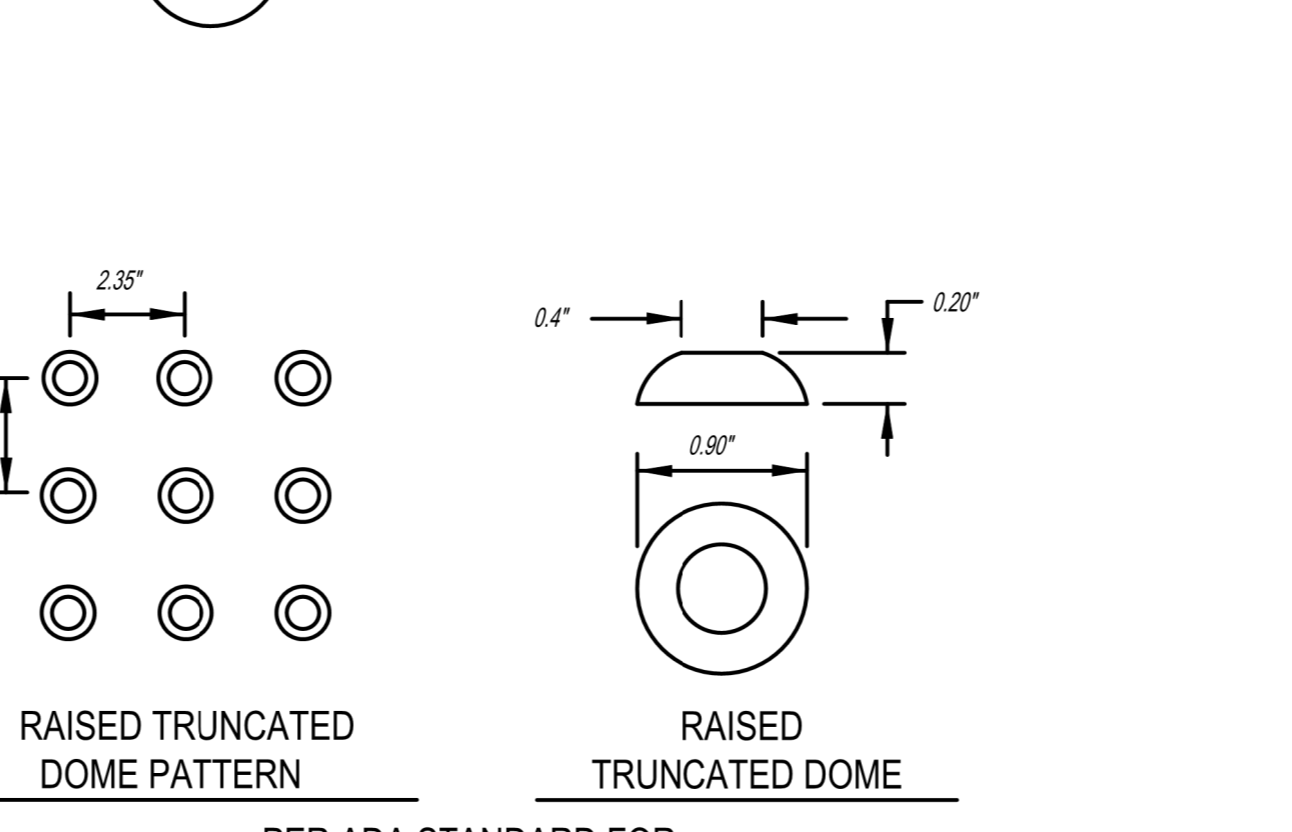
**ASPHALT PAVEMENT SECTION (OFF PODIUM)**



**CONCRETE SIDEWALK (OFF PODIUM)**

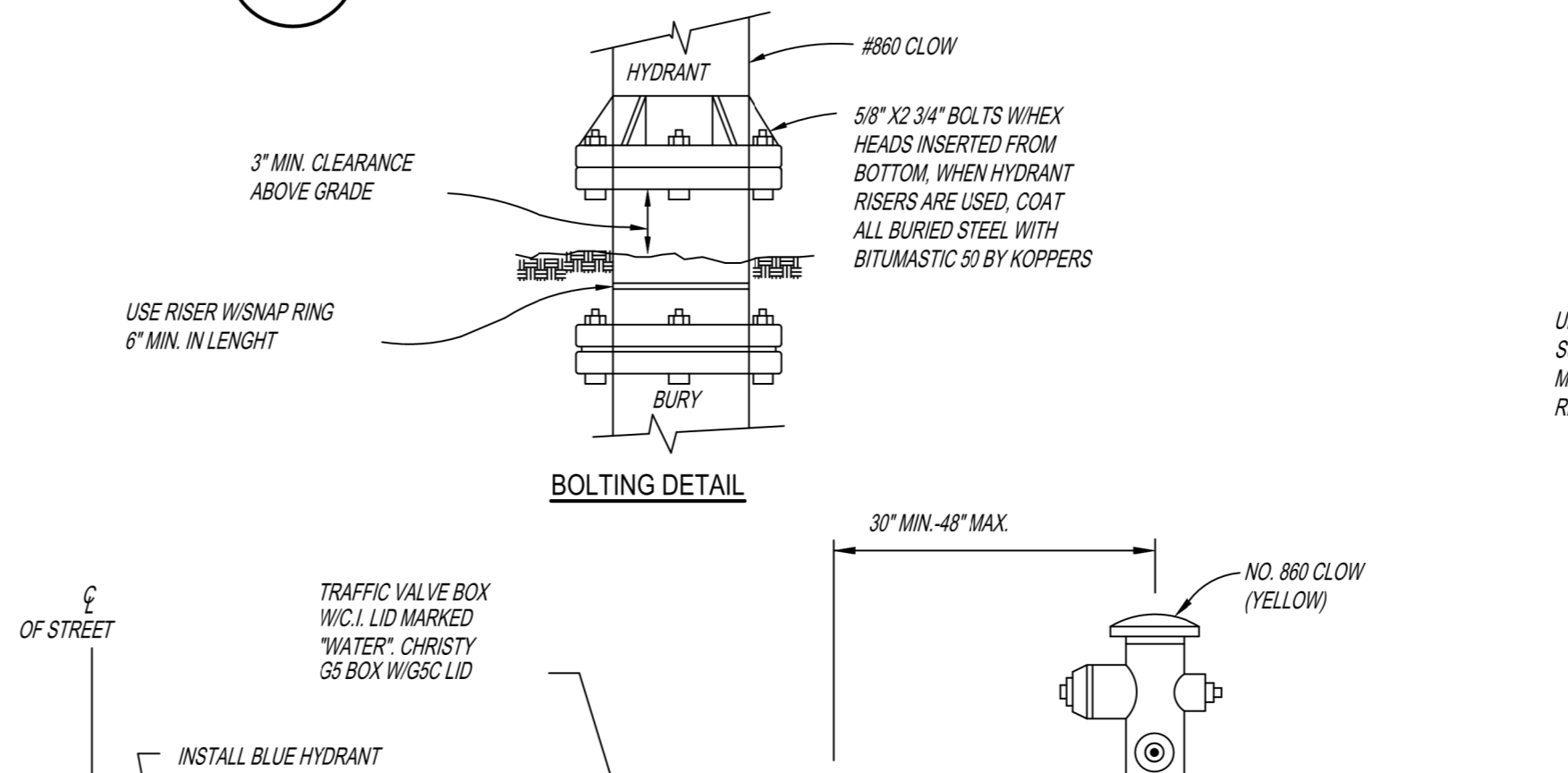


**ACCESSIBLE RAMP**

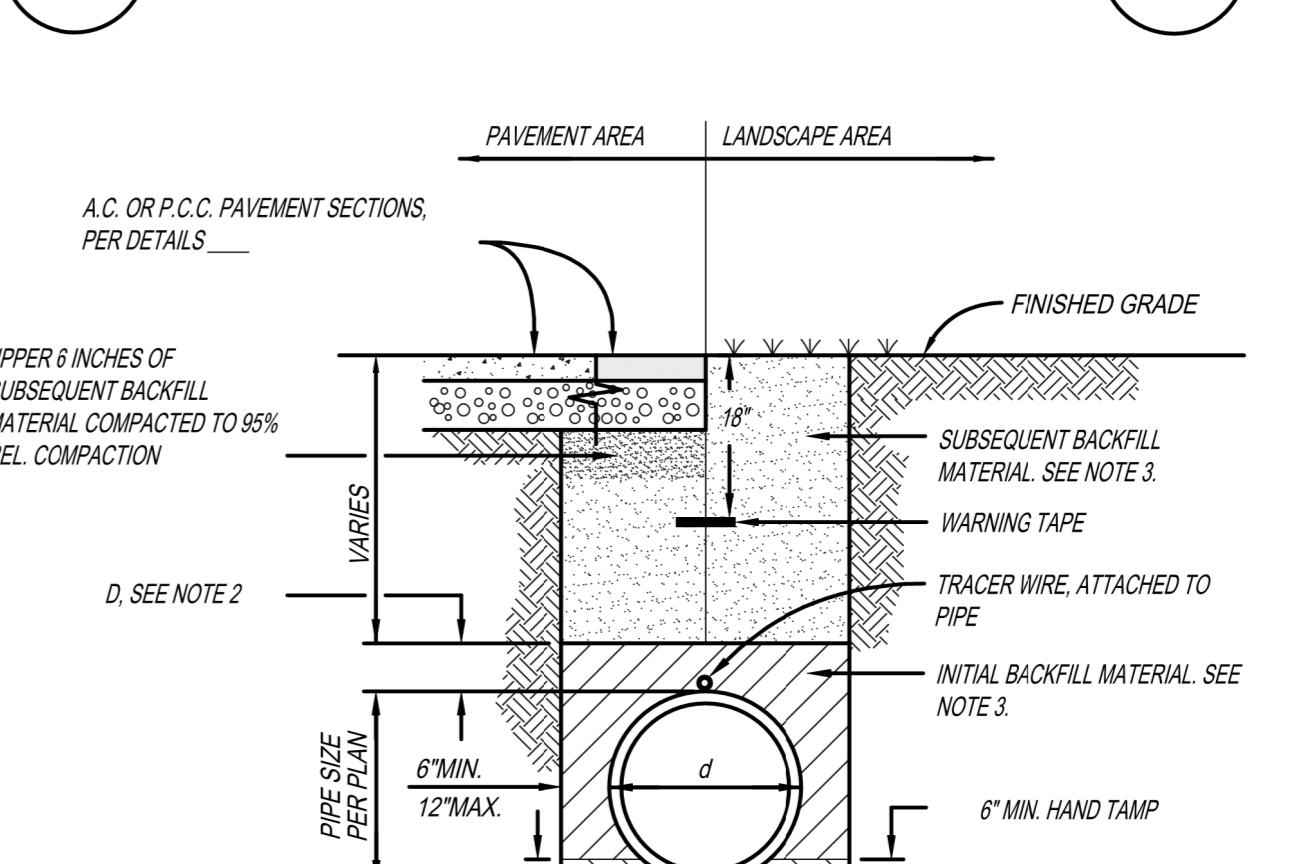


**TYPICAL ACCESSIBLE RAMP GROOVING DETAIL**

**6\"/>**

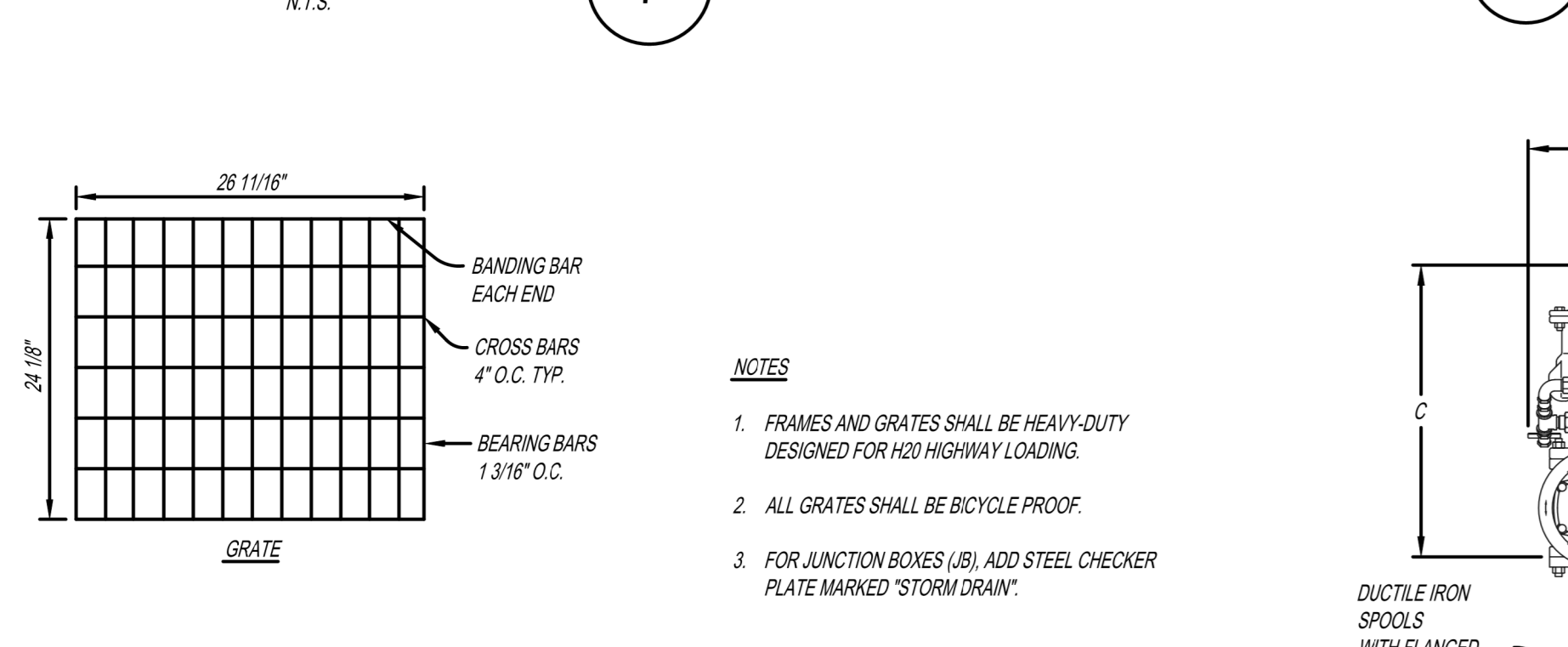


**6\"/>**

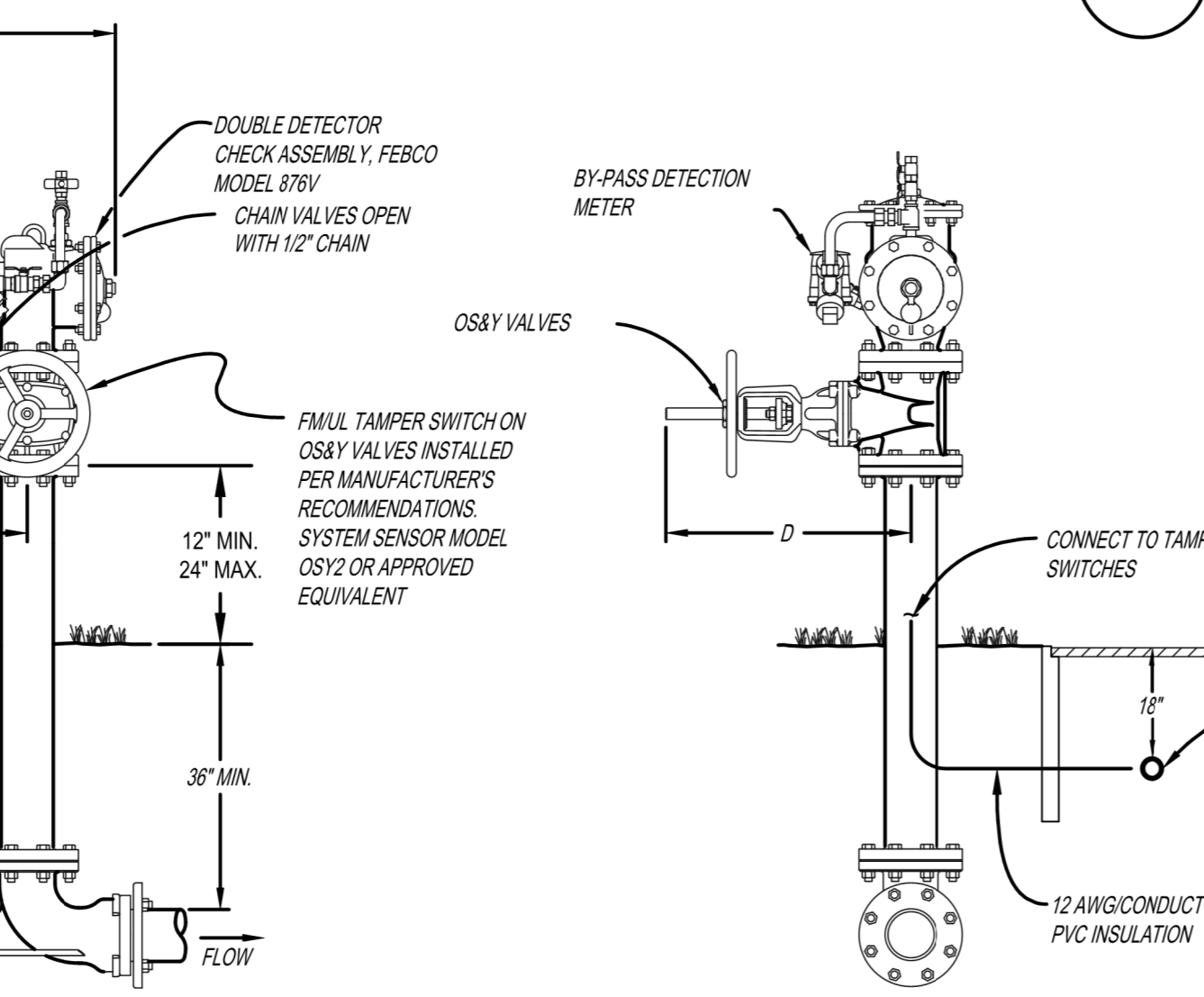


**6\"/>**

**GUTTER TRANSITION**



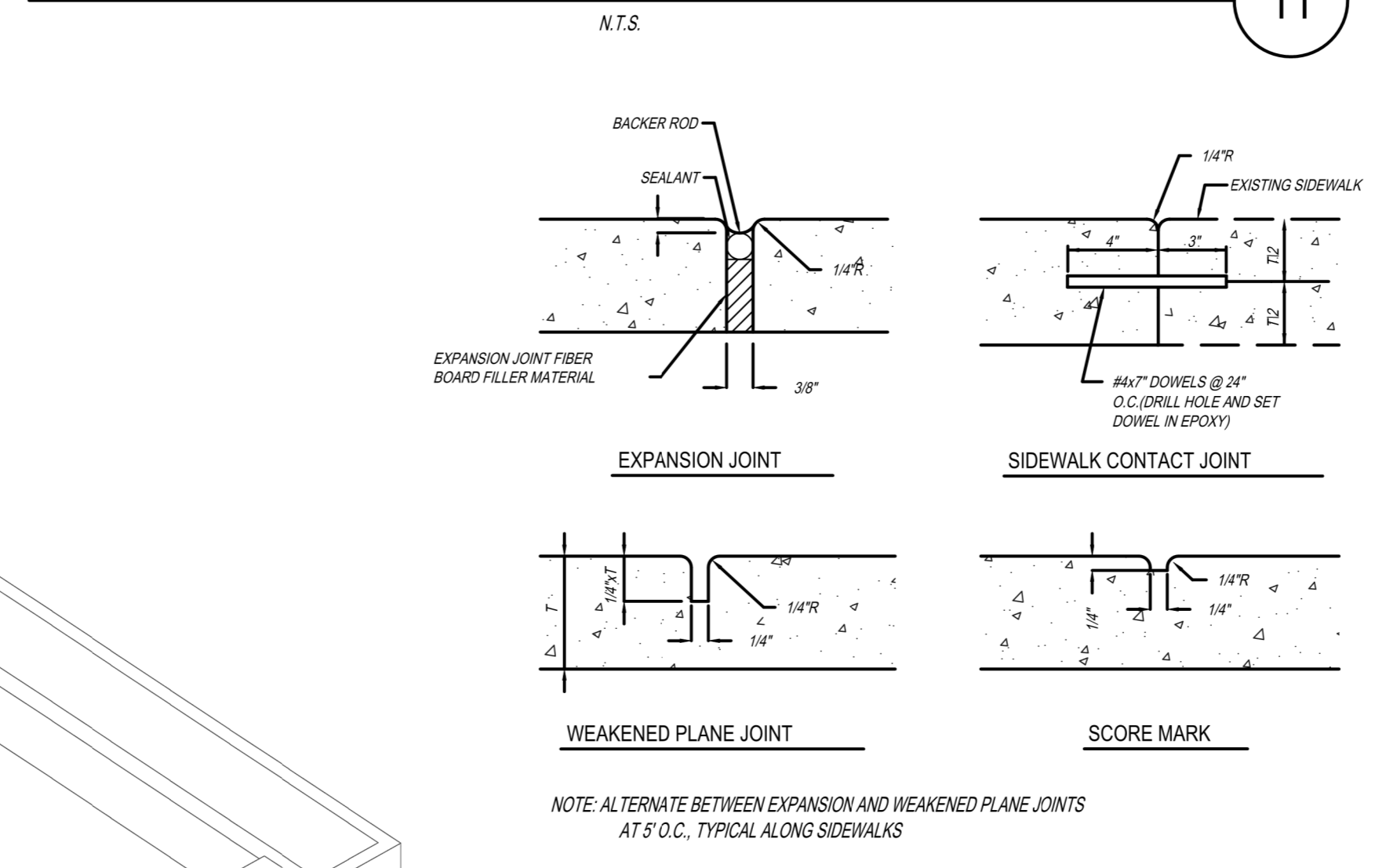
**CLEANOUT WITH LATERAL STUB**



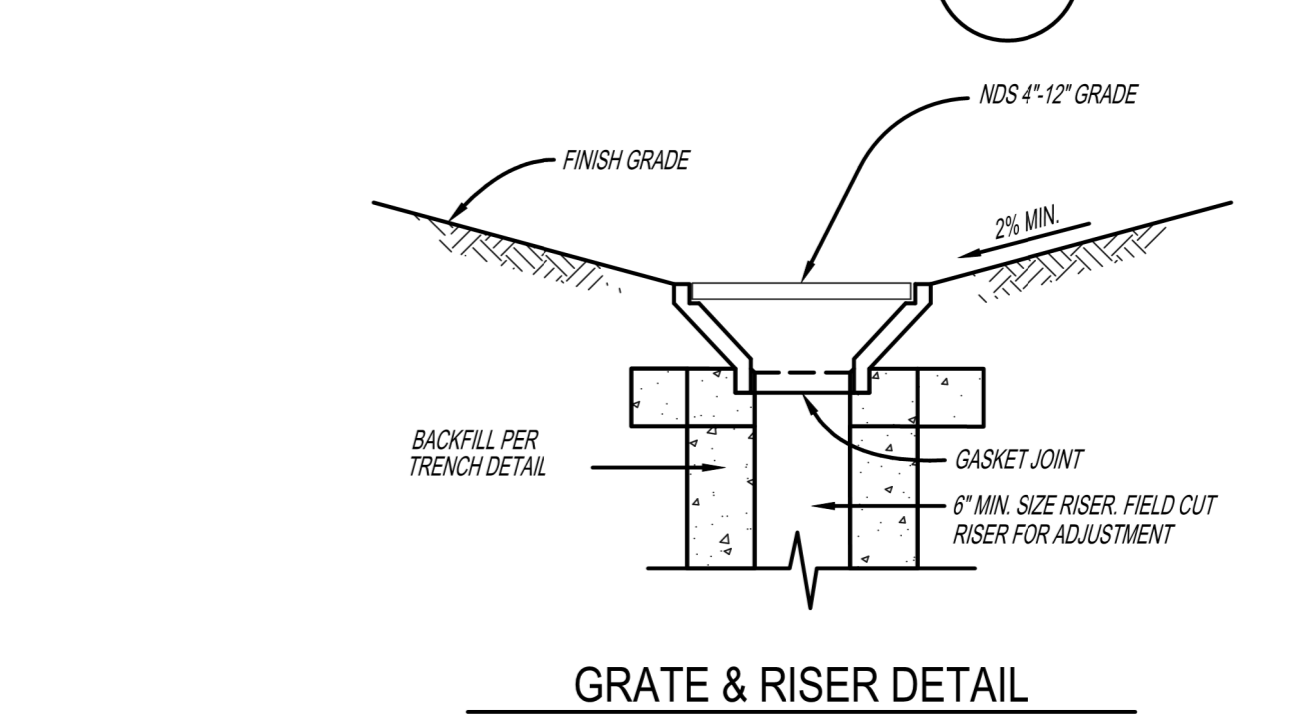
**PER ADA STANDARD FOR ACCESSIBLE DESIGN SECTION 4.29.2 DETECTABLE WARNING SURFACE**



**PRIVATE FIRE HYDRANT ASSEMBLY DETAIL (OFF PODIUM)**

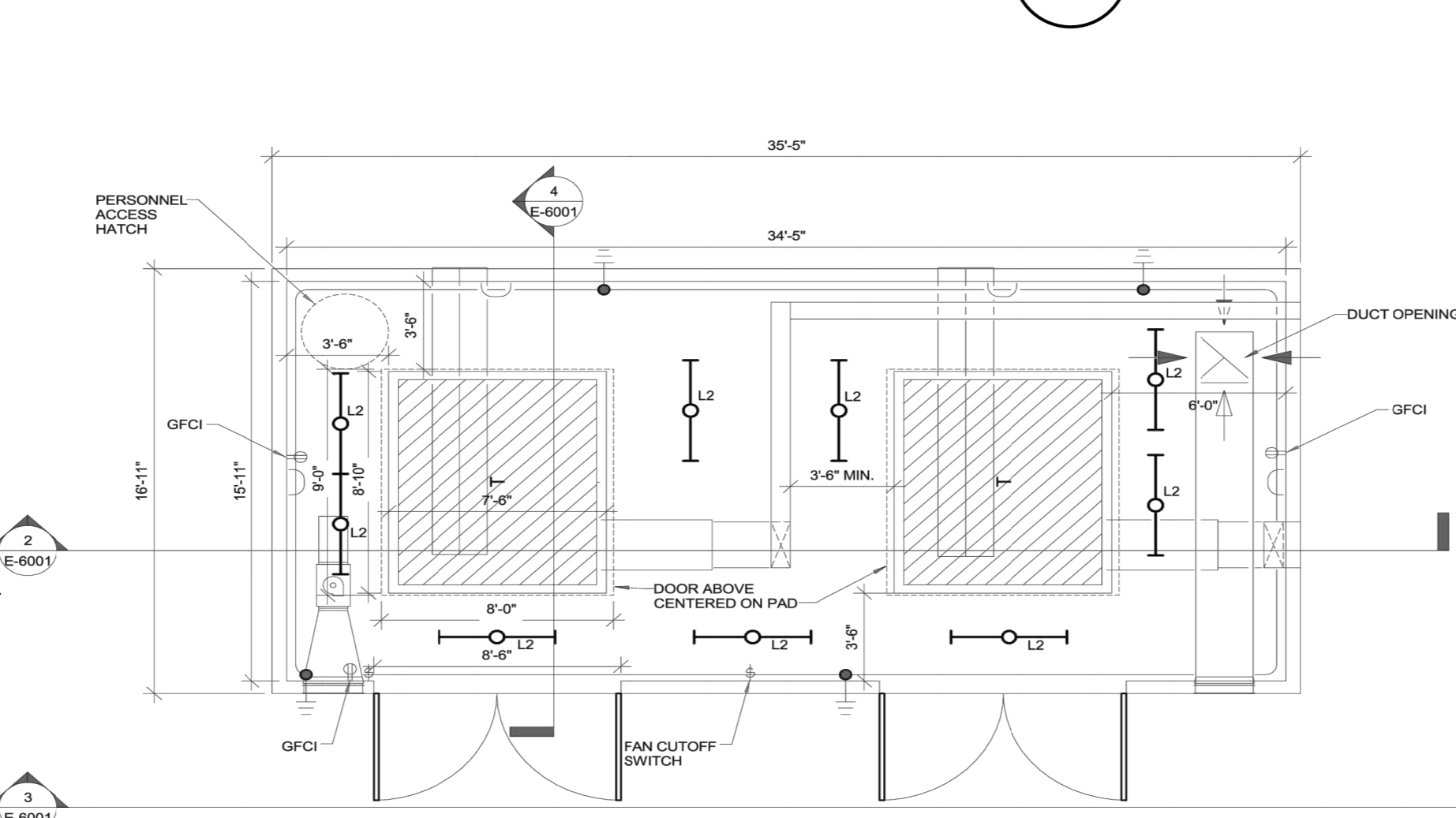


**TRENCH DETAIL**

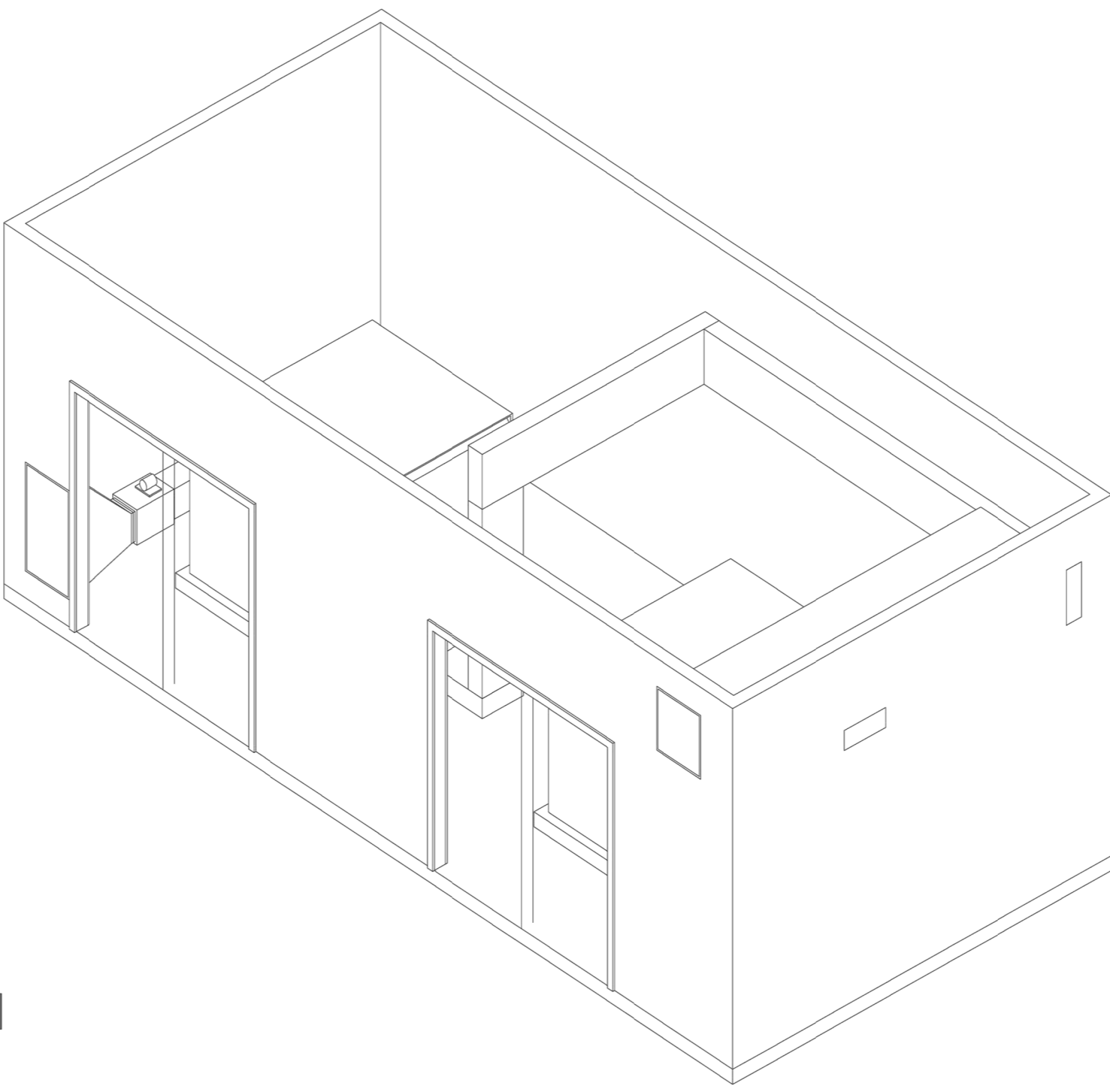
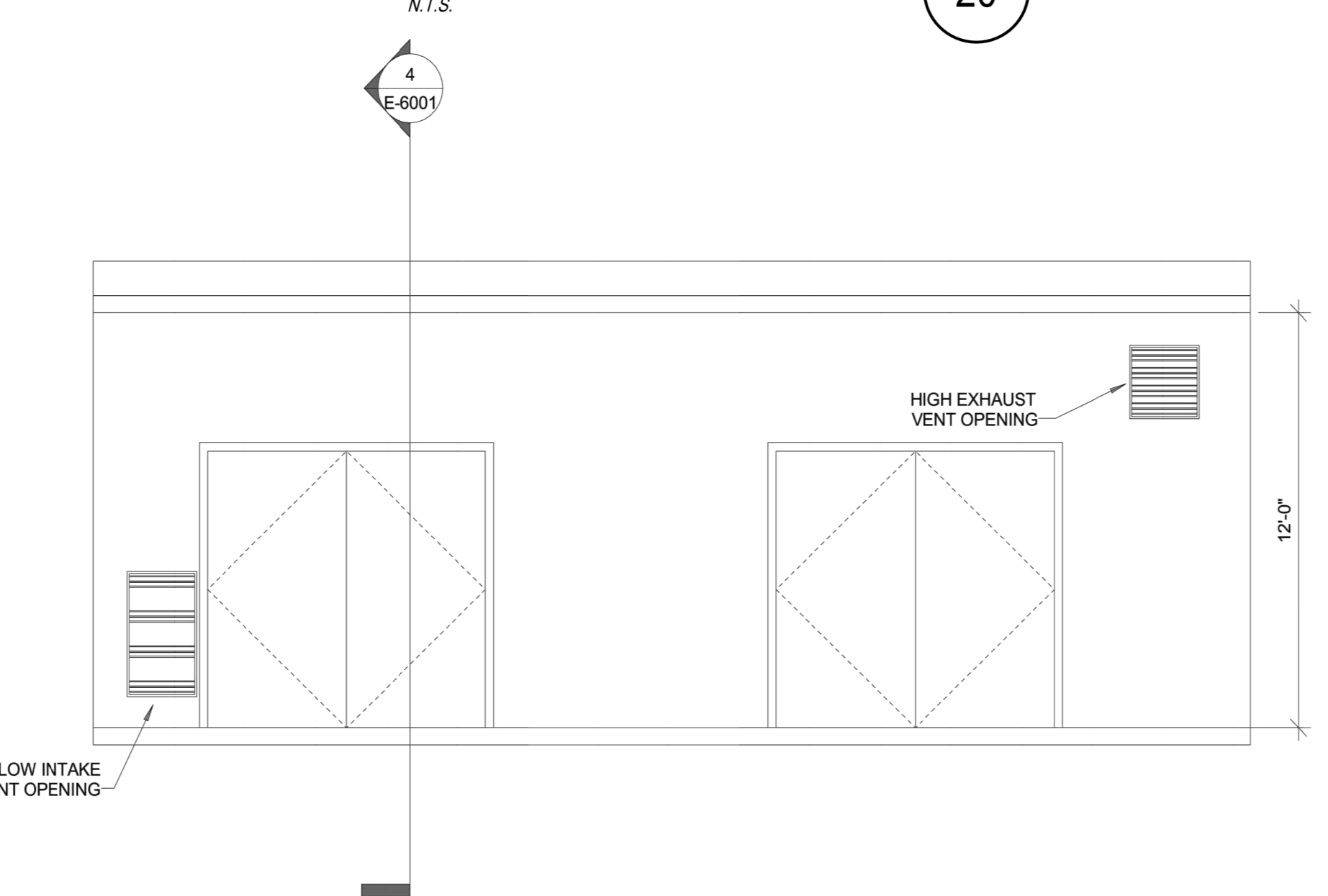


COMPACTION REQUIREMENTS					
	TRENCH SAND	TRENCH GRAVEL	APPROVED NATIVE	IMPORTED FILL	CLASS II AGGREGATE BASE
SUBSEQUENT BACKFILL MATERIAL (UNDER PAVEMENT)	N/A	N/A	XX% (85%)	XX% (85%)	XX% (85%)
SUBSEQUENT BACKFILL MATERIAL (IN LANDSCAPE)	N/A	N/A	XX% (85%)	XX% (85%)	XX% (85%)
INITIAL BACKFILL MATERIAL	XX% (85%)	XX% (85%)	N/A	N/A	N/A
BEDDING MATERIAL	XX% (85%)	XX% (85%)	N/A	N/A	N/A

**FIRE SERVICE BACKFLOW PREVENTOR**

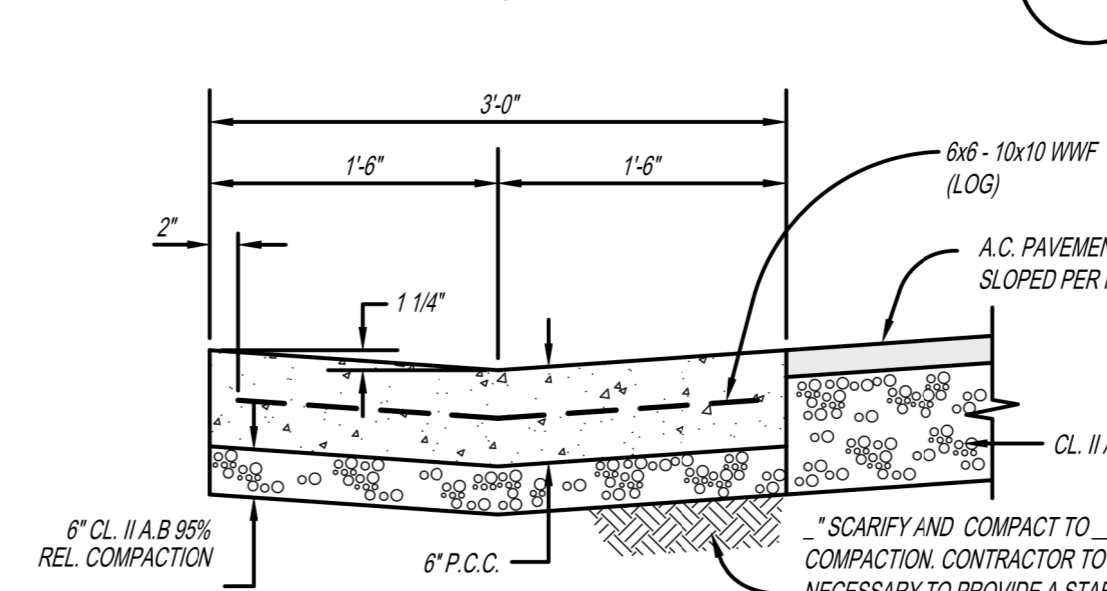


**2 XFMR VAULT PLAN VIEW**

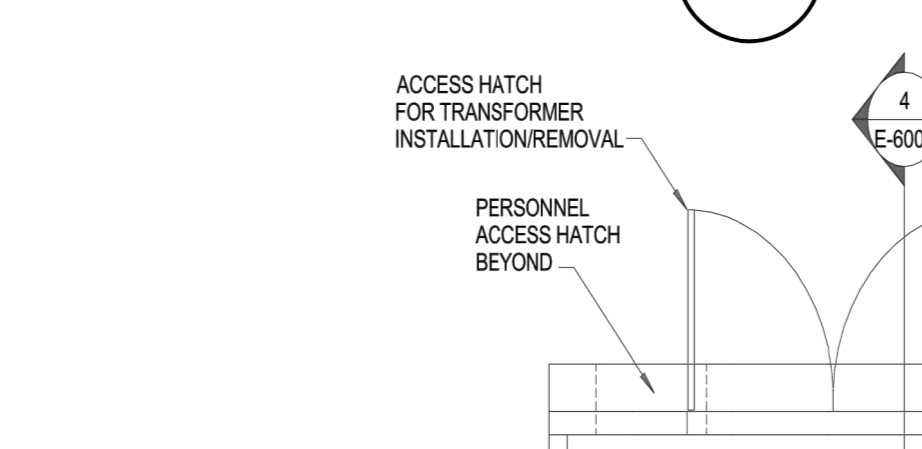


**3D VAULT VIEW - 2 XFMR**

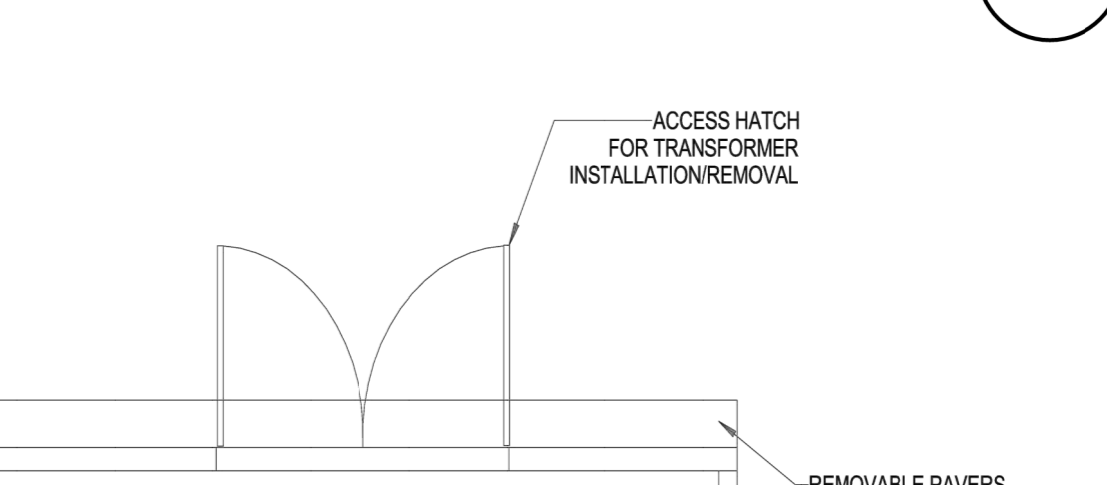
**TYPICAL CONCRETE DETAILS**



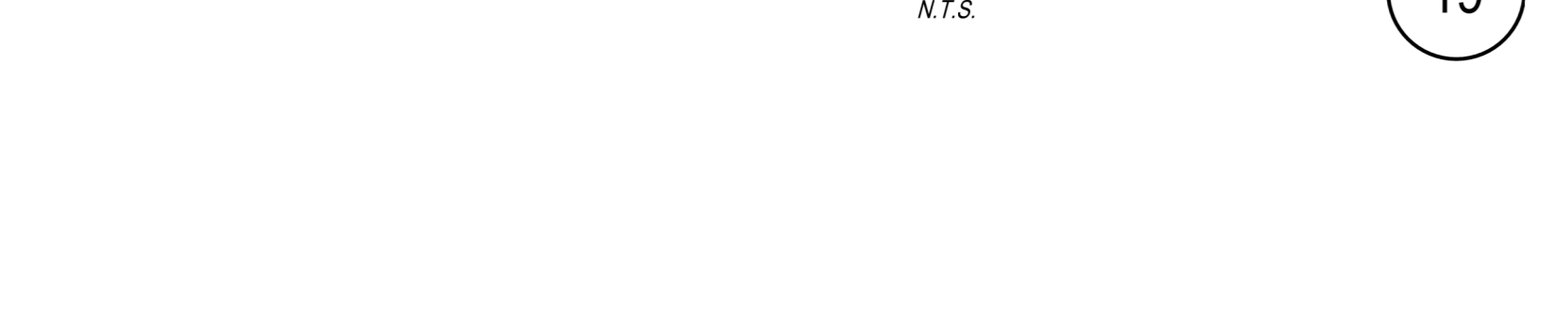
**VALLEY GUTTER**



**LANDSCAPE DRAIN**



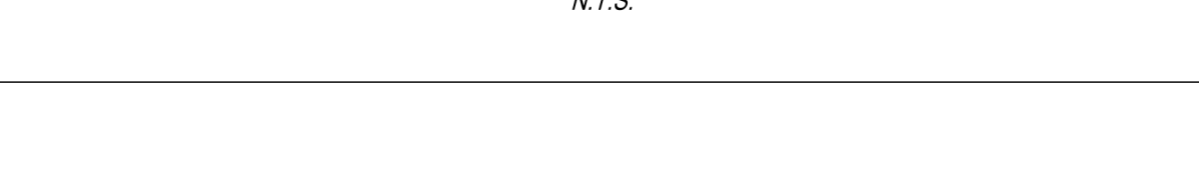
**TYPICAL MANHOLE DETAIL**



**VENTILATION AND ENTRANCE DETAIL**



**SECTION 1 - 2 XFMR**



**SECTION 2 - 2 XFMR**

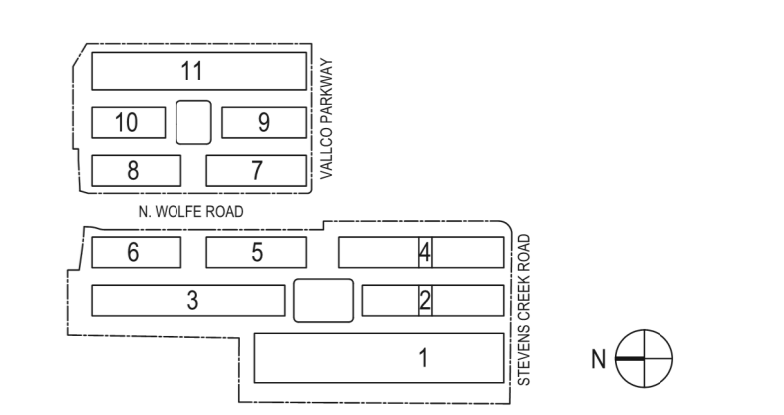


**NOT FOR CONSTRUCTION**

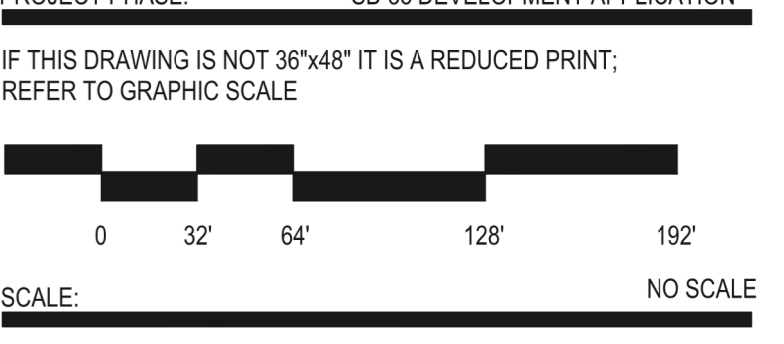
DISCLAIMER  
 THE ARCHITECT/ENGINEER SHALL HAVE NO RESPONSIBILITY FOR ANY LIABILITY, LOSS, COST, DAMAGE OR EXPENSE ARISING FROM OR RELATING TO ANY USE OF THIS DOCUMENT FOR ANY PURPOSE OTHER THAN THAT INTENDED HEREON. THIS DOCUMENT IS TO BE CONSIDERED IN CONJUNCTION WITH ALL RELATED DOCUMENTATION. ANY DISCREPANCIES IDENTIFIED IN THIS DOCUMENT MUST BE REPORTED IMMEDIATELY TO THE ARCHITECT BEFORE PROCEEDING. CONTRACTORS MUST VERIFY ALL DIMENSIONS PRIOR TO PROCEEDING WITH ANY WORK. ONLY FOUR DIMENSIONS ARE TO BE USED FOR VERIFICATION.

**SB-35 DEVELOPMENT APPLICATION**

REV	DESCRIPTION	DATE
REV 01	SB-35 DEVELOPMENT APPLICATION	03/27/2018
REV 02	SB-35 APPLICATION REVISIONS	06/02/2018
REV 03	SB-35 APPLICATION CORRECTIVE SET	09/15/2018



ARCHITECTS PROJECT NUMBER: 708011  
 PROJECT PHASE: SB-35 DEVELOPMENT APPLICATION  
 IF THIS DRAWING IS NOT 36"x48" IT IS A REDUCED PRINT. REFER TO GRAPHIC SCALE.



**TYPICAL SITE DETAILS**

SHEET TITLE: P-0407  
 SHEET NUMBER: [Blank]