

VALLCO TOWN CENTER

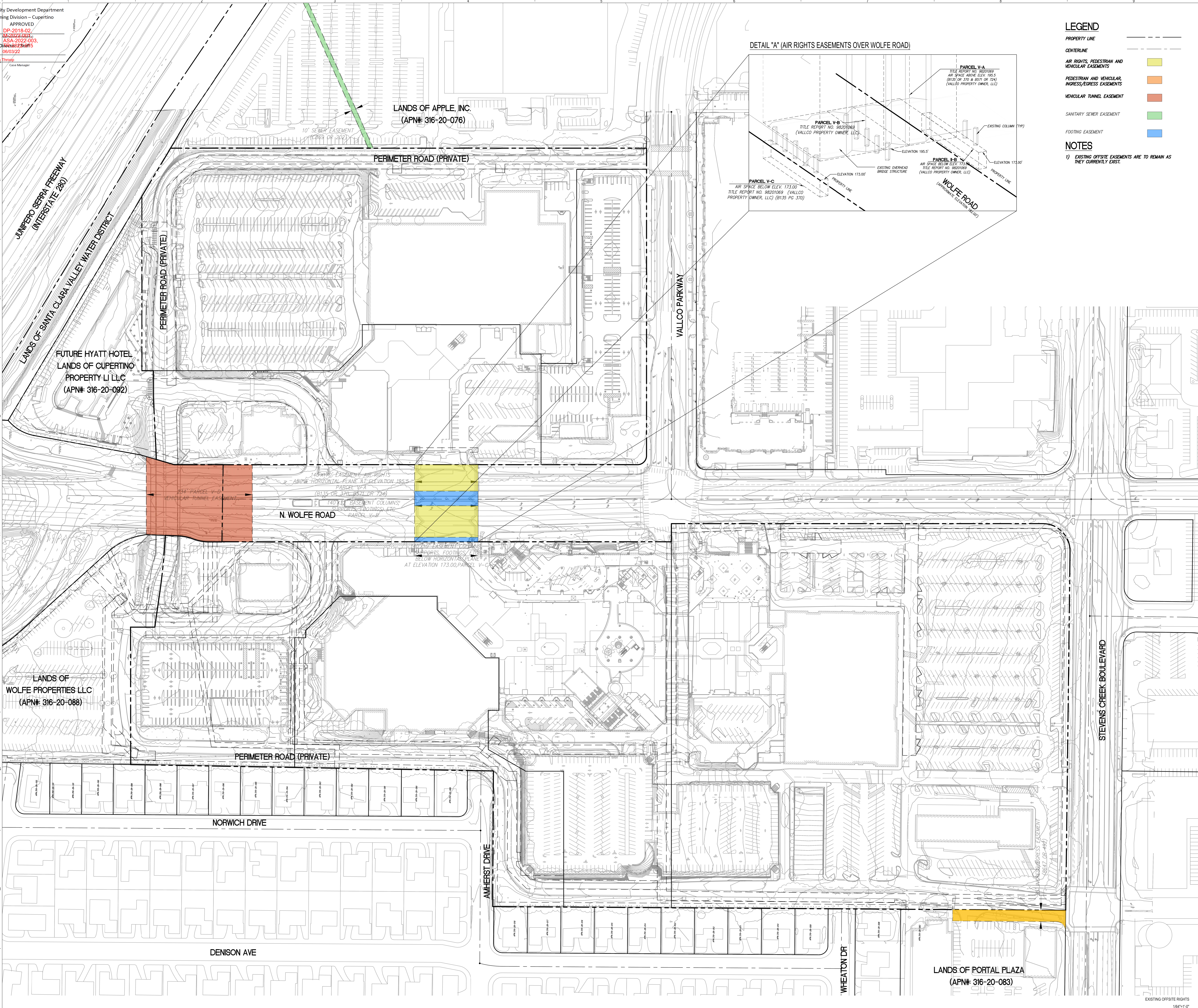
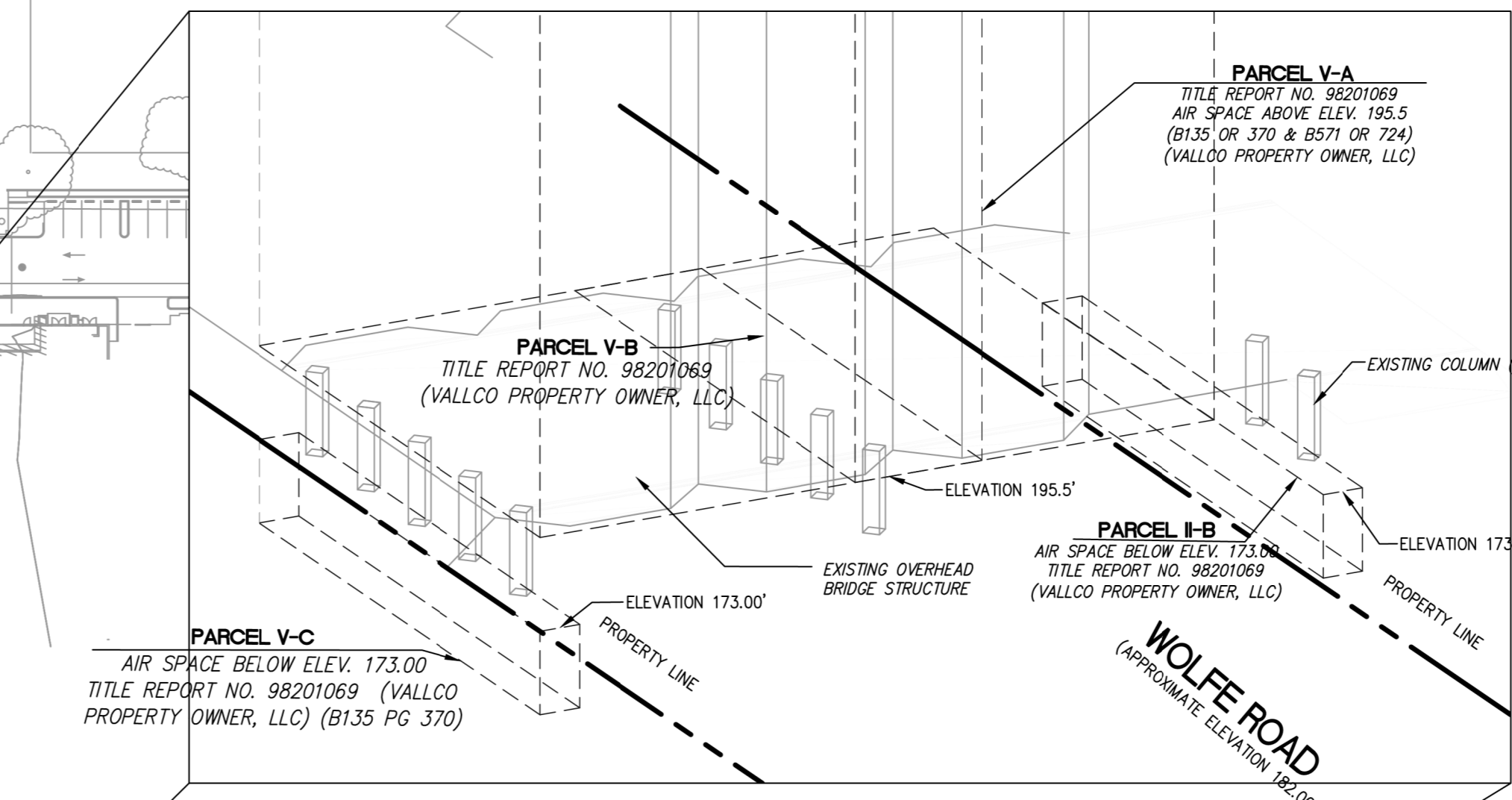
LEGEND

PROPERTY LINE	---
CENTERLINE	---
AIR RIGHTS, PEDESTRIAN AND VEHICULAR EASEMENTS	
PEDESTRIAN AND VEHICULAR, WGRESS/EGRESS EASEMENTS	
VEHICULAR TUNNEL EASEMENT	
SANITARY SEWER EASEMENT	
FOOTING EASEMENT	

NOTES
 1) EXISTING OFFSITE EASEMENTS ARE TO REMAIN AS THEY CURRENTLY EXIST.

OWNER - VALLCO PROPERTY OWNER LLC
 965 PAGE MILL ROAD, PALO ALTO, CA 94304
 T. 650-344-1920
 ARCHITECTURE - RAFAEL VINYOL ARCHITECTS
 50 VANDAM STREET, NEW YORK, NY 10013
 T. 212-924-5000
 ARCHITECTURE - RAFAEL VINYOL ARCHITECTS
 1033 N. WOLFE ROAD, CUPERTINO CA 95014
 T. 408-627-7000
 LANDSCAPE ARCHITECTURE - OLIN PARTNERSHIP LTD.
 150 S. INDEPENDENCE HALL, W. SHITE 1123, PHILADELPHIA, PA 19108
 T. 215-440-0000
 CIVIL - SANDS CIVIL ENGINEERS SURVEYORS PLANNERS, INC.
 1700 S. WINCHESTER BLVD, SUITE 200, CAMPBELL, CA 95008
 T. 408-636-0500
 TRANSPORTATION ENGINEERING - ARUP NORTH AMERICA, LTD.
 360 MISSION STREET SUITE 700 SAN FRANCISCO CA 94105
 T. 415-957-9445
 LIGHTING - ONE LUX STUDIO
 1817 JFK BLVD, SUITE 1665, PHILADELPHIA, PA 19103
 T. 215-961-1500
 PARKING ENGINEERING - WATRY DESIGN, INC.
 2090 GATEWAY PLACE, SUITE 550, SAN JOSE, CA 95110
 T. 408-292-7200
 WASTE MANAGEMENT - CIN-LITTLE INTERNATIONAL
 535 NORTH BRAN BLVD, STE 710 GLENDALE, CA 92103
 T. 825-441-7700

DETAIL "A" (AIR RIGHTS EASEMENTS OVER WOLFE ROAD)

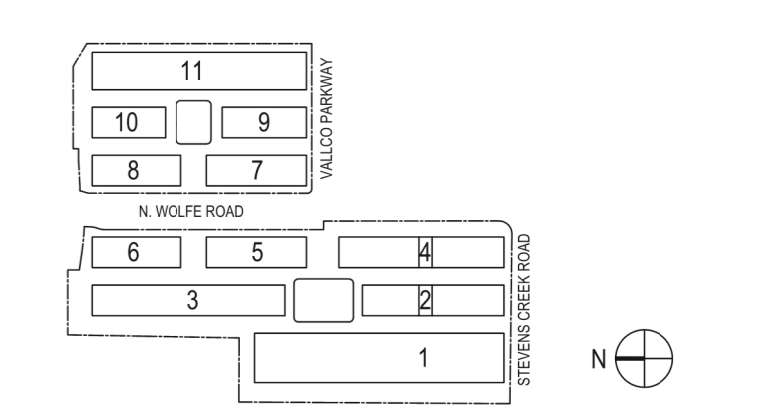


NOT FOR CONSTRUCTION

DISCLAIMER
 THE ARCHITECT/ENGINEER SHALL HAVE NO RESPONSIBILITY FOR ANY LIABILITY, LOSS, COST, DAMAGE OR EXPENSE ARISING FROM OR RELATING TO ANY USE OF THIS DOCUMENT FOR ANY PURPOSE OTHER THAN ITS INTENDED PURPOSE ON THIS PROJECT. THIS DOCUMENT IS TO BE CONSIDERED IN CONJUNCTION WITH ALL RELATED DOCUMENTATION. ANY DISCREPANCIES IDENTIFIED IN THIS DOCUMENT MUST BE REPORTED IMMEDIATELY TO THE ARCHITECT BEFORE PROCEEDING. CONTRACTORS MUST VERIFY ALL DIMENSIONS PRIOR TO PROCEEDING WITH ANY WORK. ONLY FIGURED DIMENSIONS ARE TO BE USED FOR VERIFICATION.

SB-35 DEVELOPMENT APPLICATION

REV	DESCRIPTION	DATE
REV.0	SB-35 DEVELOPMENT APPLICATION	03/27/2018
REV.1	SB-35 APPLICATION REVISIONS	06/06/2018
REV.2	SB-35 APPLICATION CONFORM SET	09/15/2018



KEY PLAN AND NORTH ARROW
 ARCHITECTS PROJECT NUMBER: 708011
 PROJECT PHASE: SB-35 DEVELOPMENT APPLICATION
 IF THIS DRAWING IS NOT 36"X48" IT IS A REDUCED PRINT. REFER TO GRAPHIC SCALE.
 SCALE: 0 32 64 128 192 164"x1'-0"

EXISTING OFFSITE RIGHTS

SHEET TITLE:
P-0305
 SHEET NUMBER: 1