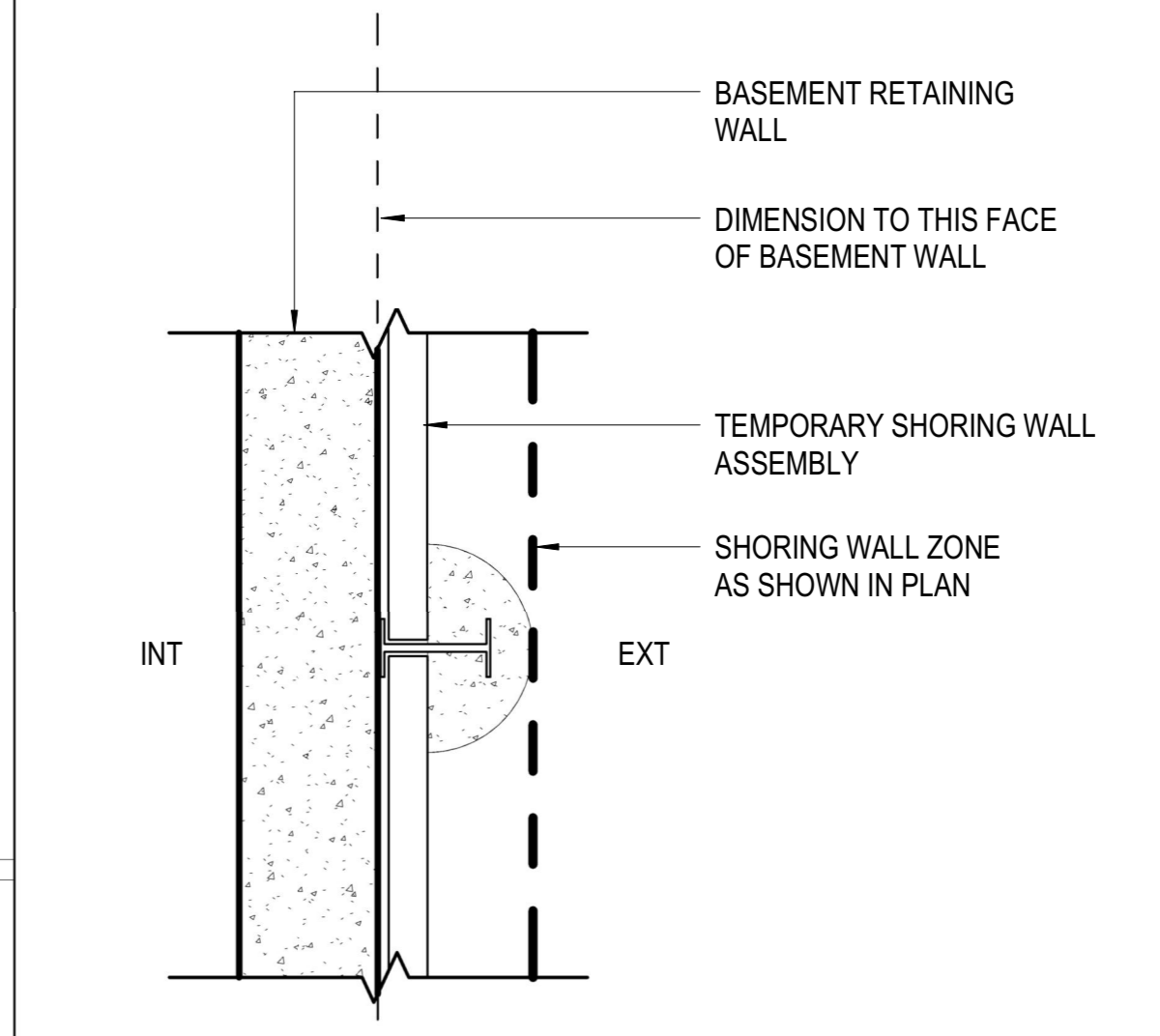
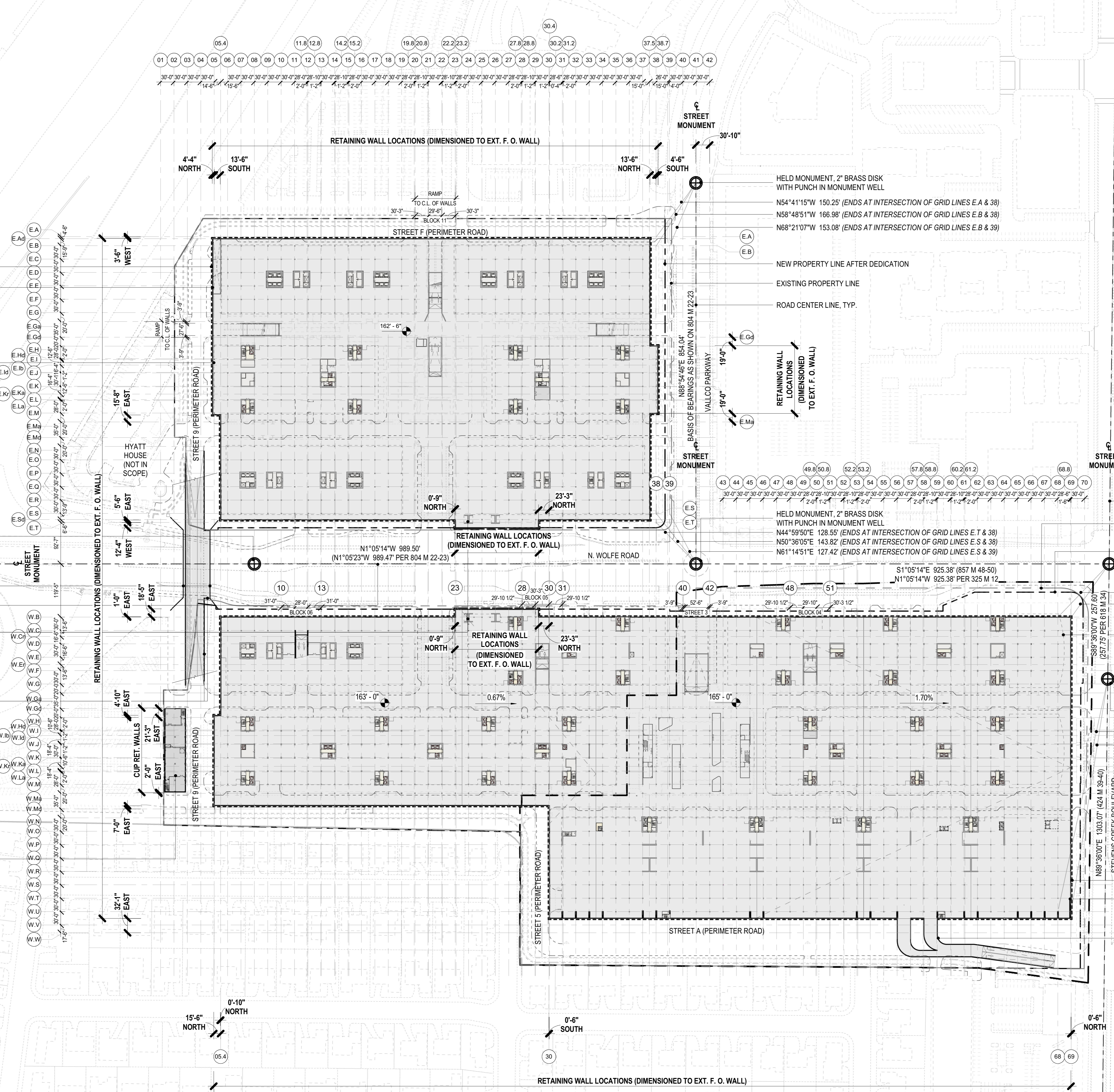


KEY DIMENSIONAL DIAGRAM



THE RISE

OWNER - WALCO PROPERTY OWNER LLC
 2600 EL CAMINO REAL, SUITE 410, PALO ALTO, CA 94306
 T. 650.344.1591
 ARCHITECTURE - RAFAEL VINYOL ARCHITECTS
 375 PEARL STREET, 31ST FLOOR, NEW YORK, NY 10038
 T. 408-627-7090
 ARCHITECTURE - RAFAEL VINYOL ARCHITECTS
 10123 N. WOLFE ROAD, CUPERTINO, CA 95014
 T. 408-627-7090
 LANDSCAPE ARCHITECTURE - OLIN PARTNERSHIP LTD.
 1705 S. WINCHESTER BLVD., SUITE 200, CAMPBELL, CA 95008
 T. 408-636-0900
 CIVIL - SANDS CIVIL ENGINEERS SURVEYORS PLANNERS, INC.
 100 W. SAN FERNANDO STREET, SUITE 200, SAN JOSE, CA 95113
 T. 669-800-4130
 TRAFFIC - KIMLEY-HORN AND ASSOCIATES, INC.
 100 W. SAN FERNANDO STREET, SUITE 200, SAN JOSE, CA 95113
 T. 669-800-4130
 LIGHTING DESIGN - ONE LUX STUDIO
 158 WEST 20TH STREET, 10TH FLOOR, NEW YORK, NY 10011
 T. 212-201-6790
 SIGNAGE & WAYFINDING - EXIT DESIGN
 725 N. 4TH STREET, PHILADELPHIA, PA 19123
 T. 215-581-1950
 PARKING ENGINEERING - WATRY DESIGN, INC.
 2099 GATEWAY PLACE, SUITE 550, SAN JOSE, CA 95110
 T. 408-362-7000
 FOOD SERVICE, WASTE MANAGEMENT & LOGISTICS - CNU-LITTLE
 156 2ND STREET, SAN FRANCISCO, CA 94105
 T. 415-522-9800



RETAINING WALL LOCATIONS (DIMENSIONED TO EXT. F. O. WALL)

4'-4" NORTH
 13'-6" SOUTH
 13'-6" NORTH
 4'-6" SOUTH

HELD MONUMENT, 2" BRASS DISK WITH PUNCH IN MONUMENT WELL
 N54°41'15"W 150.25' (ENDS AT INTERSECTION OF GRID LINES E.A & 39)
 N58°48'51"W 166.98' (ENDS AT INTERSECTION OF GRID LINES E.B & 39)
 N68°21'07"W 153.08' (ENDS AT INTERSECTION OF GRID LINES E.B & 39)

NEW PROPERTY LINE AFTER DEDICATION
 EXISTING PROPERTY LINE
 ROAD CENTER LINE, TYP.

RETAINING WALL LOCATIONS (DIMENSIONED TO EXT. F. O. WALL)

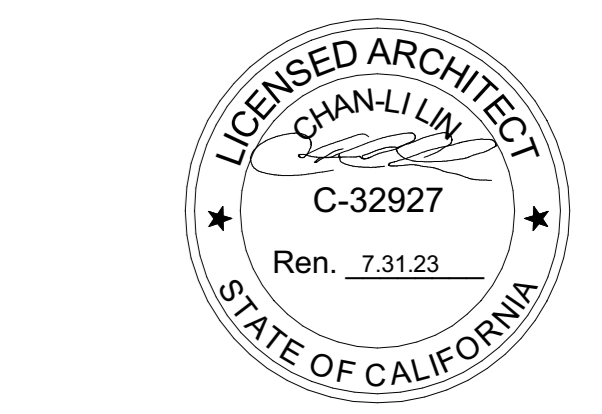
HELD MONUMENT, 2" BRASS DISK WITH PUNCH IN MONUMENT WELL
 N44°59'50"E 128.55' (ENDS AT INTERSECTION OF GRID LINES E.T & 38)
 N50°36'05"E 143.82' (ENDS AT INTERSECTION OF GRID LINES E.S & 39)
 N61°14'51"E 127.42' (ENDS AT INTERSECTION OF GRID LINES E.S & 39)

HELD RECORD BEARING AND DISTANCE PER 858 M 41.
 FOUND 2" BRASS DISK WITH PUNCH IN MONUMENT WELL

HELD RECORD BEARING AND DISTANCE PER 857 M 48-50.
 FOUND 2" BRASS DISK WITH PUNCH IN MONUMENT WELL
 N47°17'00"W 165.48' (ENDS AT INTERSECTION OF GRID LINES W.B & 68)
 N55°47'34"W 146.32' (ENDS AT INTERSECTION OF GRID LINES W.B & 68)

HELD MONUMENT FOR CENTERLINE OF E. ESTATES DRIVE.
 1-1/2" IRON PIPE WITH PLUG IN MONUMENT WELL (618 M 34)
 N79°01'53"W 533.61' (ENDS AT INTERSECTION OF GRID LINES W.U & 69)
 N82°12'57"W 528.16' (ENDS AT INTERSECTION OF GRID LINES W.U & 69)

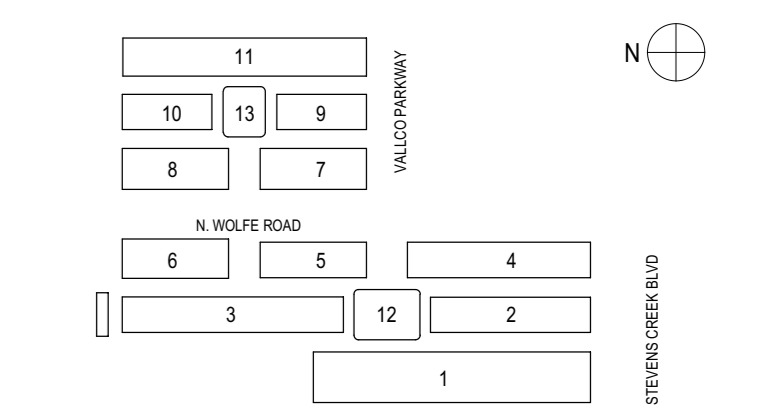
SHORING WALL EDGE SHOWN DASHED
 BASEMENT RETAINING WALL
 WEST TUNNEL WALL



NOT FOR CONSTRUCTION
 STAMP SIGNATURE
 DISCLAIMER
 THE ARCHITECT/ENGINEER SHALL HAVE NO RESPONSIBILITY FOR ANY LIABILITY, LOSS, COST, DAMAGE OR EXPENSE ARISING FROM OR RELATING TO ANY USE OF THIS DOCUMENT FOR ANY PURPOSE OTHER THAN ITS INTENDED PURPOSE ON THIS PROJECT. THIS DOCUMENT IS TO BE CONSIDERED IN CONJUNCTION WITH ALL RELATED DOCUMENTATION. ANY DISCREPANCIES IDENTIFIED IN THIS DOCUMENT MUST BE REPORTED IMMEDIATELY TO THE ARCHITECT BEFORE PROCEEDING. CONTRACTORS MUST VERIFY ALL DIMENSIONS PRIOR TO PROCEEDING WITH ANY WORK. ONLY FIGURED DIMENSIONS ARE TO BE USED FOR VERIFICATION.

SB-35 MODIFICATION APPLICATION

REV	DESCRIPTION	DATE
REV-0	SB-35 MODIFICATION APPLICATION	03/23/2022



KEY PLAN AND NORTH ARROW
 ARCHITECTS PROJECT NUMBER 708.012
 IF THIS DRAWING IS NOT 36"x48" IT IS A REDUCED PRINT. REFER TO GRAPHIC SCALE.
 SCALE: 1/100"=1'-0"
 MASTER SITE PLAN - BASEMENT LEVEL