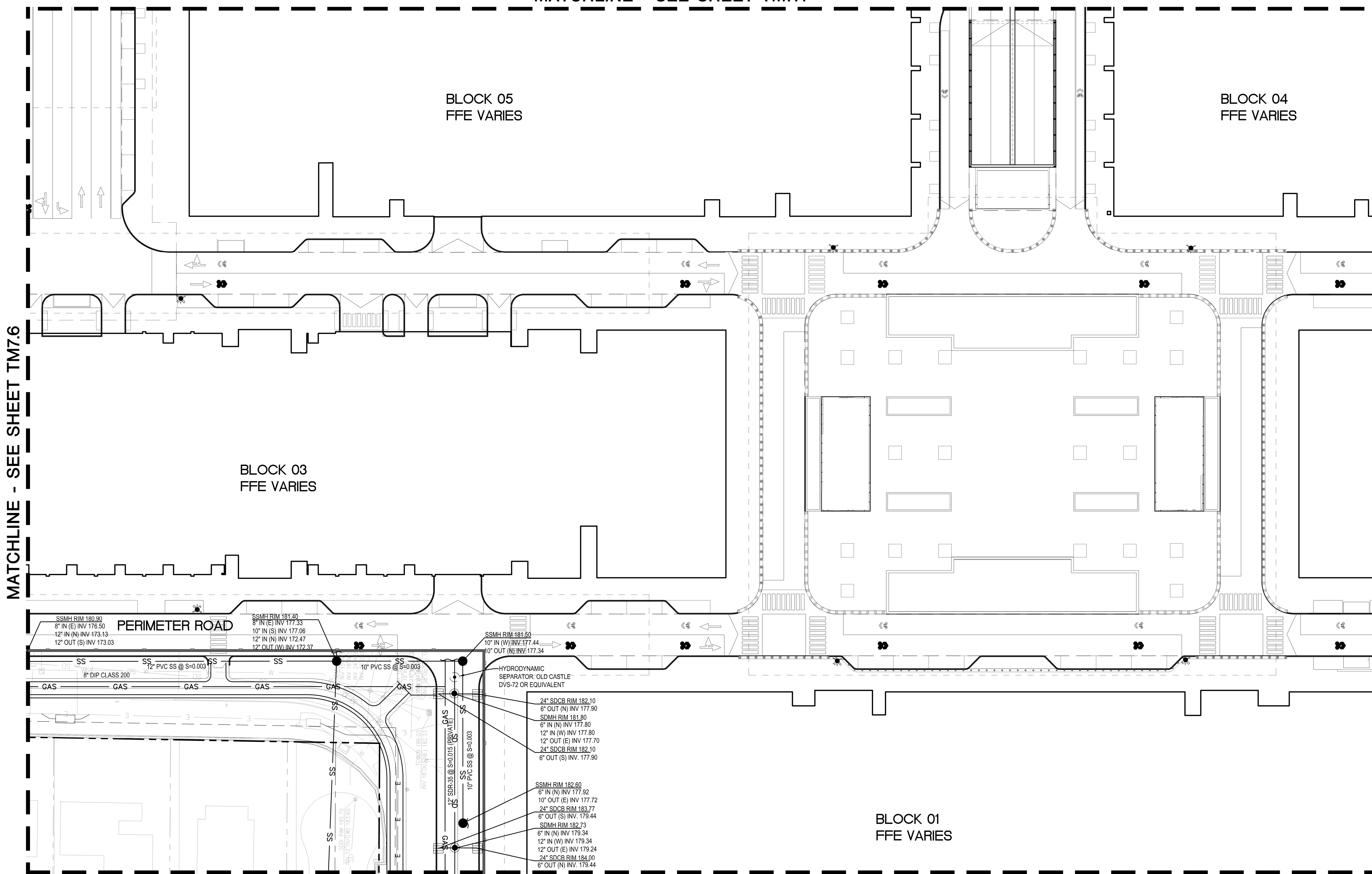


MATCHLINE - SEE SHEET TM7.4

**LEGEND**

- PROPERTY LINE
- ADJACENT PROPERTY LINE
- STREET CENTERLINE
- EASEMENT LINE
- FLOW ARROW
- OVERLAND RELEASE
- WATER METER
- BACKFLOW PREVENTER
- SD --- STORM DRAIN LINE
- SS --- SANITARY SEWER LINE
- W --- WATER LINE
- JT --- JOINT TRENCH LINE
- COM --- COMMUNICATION LINE
- UNDERGROUND GARAGE LIMIT
- ELECTRICAL VAULT
- ▣ UNDERGROUND PAD
- ▣ MOUNTED TRANSFORMER

- UTILITY NOTE**
- TRANSFORMERS TO BE LOCATED BELOW GROUND IN VAULTS.
  - UTILITY DESIGN IS CONCEPTUAL. FINAL LOCATIONS, SIZES, NUMBER AND OTHER DETAILS TO BE DETERMINED AND APPROVED AT A LATER DATE IN CONSULTATION WITH THE CITY'S PUBLIC WORKS DEPARTMENT AND OTHER PERMITTING AUTHORITIES SUCH AS PG&E.
  - ALL STORM DRAINAGE THAT FALLS ON THE GREEN ROOF AND OVER PODIUM WILL BE ROUTED THROUGH THE GARAGE TO THE PROPOSED CISTERNS. THE SIZE AND NUMBER OF CISTERNS SHOWN ON THE PLANS IS SCHEMATIC IN NATURE AND WILL BE ADJUSTED AS NECESSARY IN CONSULTATION WITH THE PLUMBING ENGINEER.
  - EVERY DOMESTIC WATER SERVICES WILL HAVE AN INDIVIDUAL SUBMETERS LOCATED WITHIN THE PODIUM FOOTPRINT. EXACT LOCATIONS LOCATIONS WILL BE CONFIRMED IN CONSULTATION WITH THE PLUMBING ENGINEER.
  - STORMWATER DESIGN AND TREATMENT WITHIN THE PUBLIC RIGHT-OF-WAY TO BE ADDRESSED DURING THE STREET IMPROVEMENT PERMIT PHASE.
  - ALL IMPROVEMENTS ON ADJACENT PROPERTIES TO BE COORDINATED AND APPROVED (AS NECESSARY) BY PRIVATE AGREEMENT.



MATCHLINE - SEE SHEET TM7.6

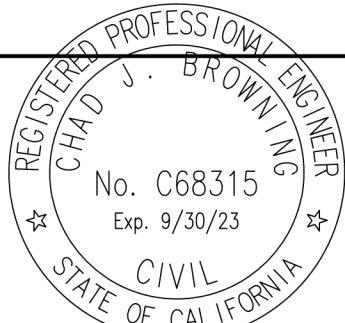
MATCHLINE - SEE SHEET TM7.8

MATCHLINE - SEE SHEET TM7.9

NO PART OF THIS DOCUMENT MAY BE REPRODUCED IN ANY FORM INCLUDING PHOTOCOPY, RECORDING OR ANY INFORMATION RETRIEVABLE AND STORAGE SYSTEM, WITHOUT PERMISSION IN WRITING FROM SANDIS.

**SANDIS** CIVIL ENGINEERS SURVEYORS PLANNERS  
 1700 S. Winchester Blvd, Suite 200, Campbell, CA 95008 | P. 408.636.0900 | F. 408.636.0999 | www.sandis.net  
 SILICON VALLEY TRI-VALLEY CENTRAL VALLEY SACRAMENTO EAST BAY/SF

DATE: 03/23/2022 DATE: MAY 27, 2022  
 SCALE: 1"=30'  
 DRAWN BY: SP  
 APPROVED BY: ND  
 DRAWING NO.: 215028  
 CHAD J. BROWNING R.C.E. NO. 68315, EXPIRES 9-30-19



No.	REVISION/ISSUE	DATE	BY
REV-0	SB-35 DEVELOPMENT APPLICATION	03/27/2018	ND
REV-1	SB-35 APPLICATION REVISIONS	08/06/2018	ND
REV-2	SB-35 APPLICATION CONFORM SET	09/15/2018	ND
REV-3	SB-35 MODIFICATION DOCUMENTS	03/23/2022	ND
REV-4	SB-35 MODIFICATION APPLICATION	05/27/2022	ND

UTILITY PLAN

TENTATIVE SUBDIVISION MAP  
 VALLCO TOWN CENTER  
 CUPERTINO CALIFORNIA

SHEET  
**TM7.7**  
 OF 73 SHEETS  
 Copyright © 2018 by Sandis

File: S:\215028\4 ENGINEERING\2 PLAN SETS\3 SHEET SET\TENTATIVE MAP\TM-7 UTILITY PLAN.dwg Date: May 27, 2022 - 10:01am, amaran