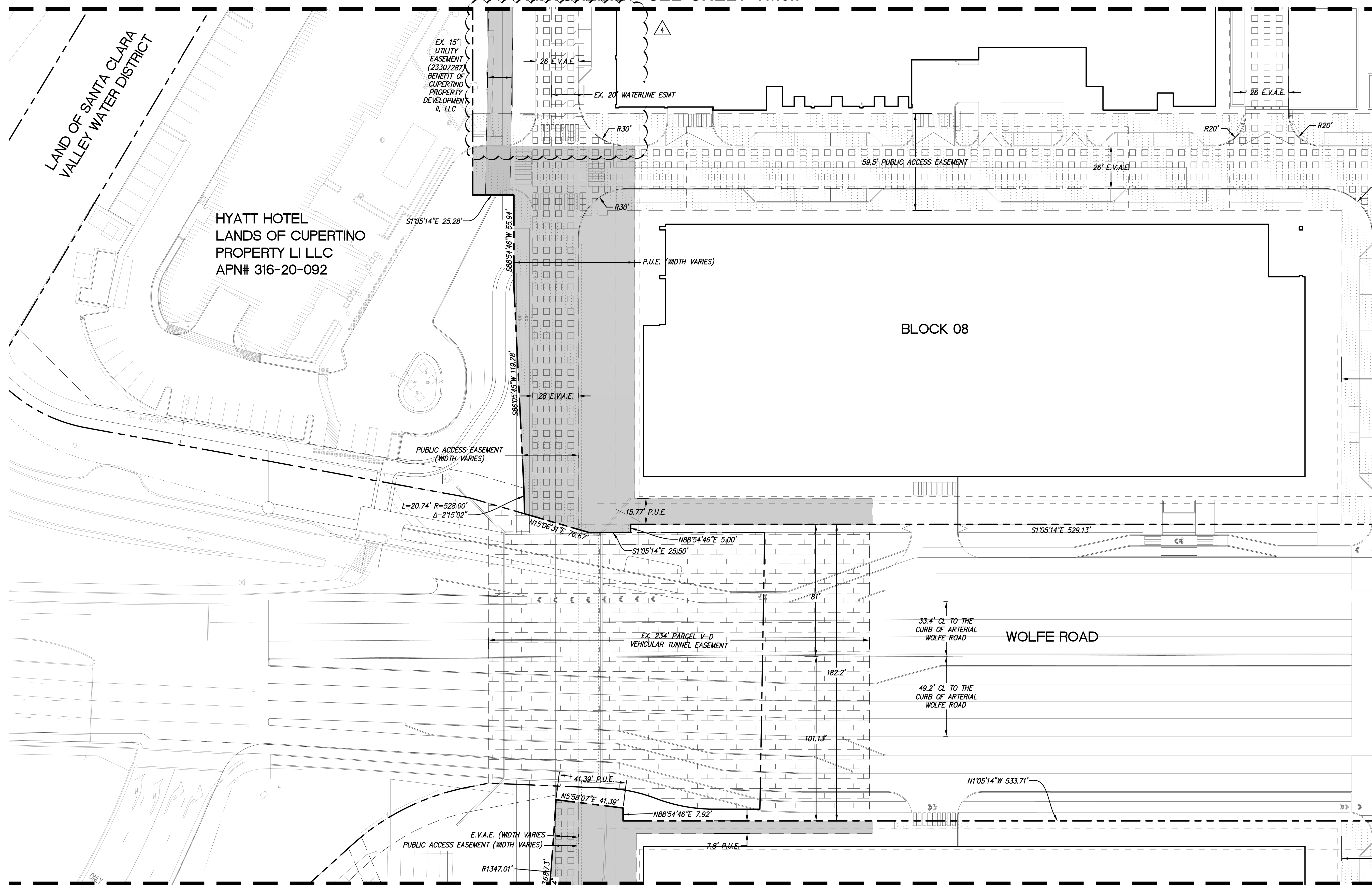


MATCHLINE - SEE SHEET TM5.1



- LEGEND**
- PROPOSED PROPERTY LINE
 - ADJACENT PROPERTY LINE STREET CENTERLINE (BASED ON CITY MONUMENTATION) EASEMENT LINE
 - /// RELINQUISHED INGRESS/ EGRESS RIGHTS TO ADJACENT PROPERTIES
 - PUBLIC UTILITY/SERVICE EASEMENT (P.U.E.)/(P.S.E.)
 - ▨ PUBLIC ACCESS EASEMENT (P.A.E.)
 - ▩ SANITARY SEWER EASEMENT
 - ▧ WATER EASEMENT
 - AIR RIGHTS EASEMENT
 - ▨ STORMWATER MANAGEMENT FACILITY EASEMENT
 - ▩ VEHICULAR AND PEDESTRIAN INGRESS AND EGRESS EASEMENT
 - ▨ VEHICULAR TUNNEL EASEMENT
 - ▩ COLUMNS, SUPPORTS, AND FOOTINGS EASEMENT
 - ▨ PG&E EASEMENT
 - ▩ EMERGENCY VEHICLE ACCESS EASEMENT (E.V.A.E.)

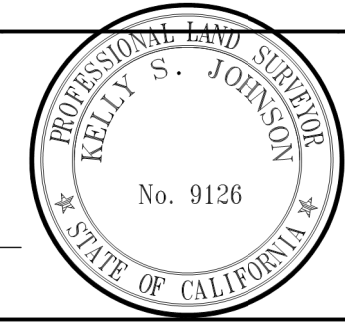
MATCHLINE - SEE SHEET TM5.4

MATCHLINE - SEE SHEET TM5.6

NO PART OF THIS DOCUMENT MAY BE REPRODUCED IN ANY FORM INCLUDING PHOTOCOPY, RECORDING OR ANY INFORMATION RETRIEVABLE AND STORAGE SYSTEM, WITHOUT PERMISSION IN WRITING FROM SANDIS.

SANDIS CIVIL ENGINEERS SURVEYORS PLANNERS
 1700 S. Winchester Blvd, Suite 200, Campbell, CA 95008 | P. 408.636.0900 | F. 408.636.0999 | www.sandis.net
 SILICON VALLEY TRI-VALLEY CENTRAL VALLEY SACRAMENTO EAST BAY/SF

DATE: 03/23/2022	DATE: MAY 27, 2022
SCALE: 1"=30'	
DRAWN BY: SP	
APPROVED BY: ND	
DRAWING NO.: 215028	KELLY S. JOHNSON P.L.S. NO. 9126, EXPIRES 9-30-22



No.	REVISION/ISSUE	DATE	BY
REV-0	SB-35 DEVELOPMENT APPLICATION	03/27/2018	ND
REV-1	SB-35 APPLICATION REVISIONS	08/06/2018	ND
REV-2	SB-35 APPLICATION CONFORM SET	09/15/2018	ND
REV-3	SB-35 MODIFICATION DOCUMENTS	03/23/2022	ND
REV-4	SB-35 MODIFICATION APPLICATION	05/27/2022	ND

PUBLIC AND PRIVATE
 EASEMENTS, DIMENSIONS AND BOUNDARIES

TENTATIVE SUBDIVISION MAP
 VALLCO TOWN CENTER
 CUPERTINO CALIFORNIA

SHEET
TM5.3
 OF 73 SHEETS
 Copyright © 2018 by Sandis

File: S:\215028\4 ENGINEERING\2 PLAN SETS\3 SHEET SET\TENTATIVE MAP\TM-5 EASEMENTS AND DIMENSIONS.dwg Date: May 26, 2022 - 1:53pm, amoran