

MATCHLINE - SEE SHEET TM4.2

MATCHLINE - SEE SHEET TM4.3

MATCHLINE - SEE SHEET TM4.5

PARCEL B
17.62± ACRES
DOC. #24097492
APN: 316-20-121

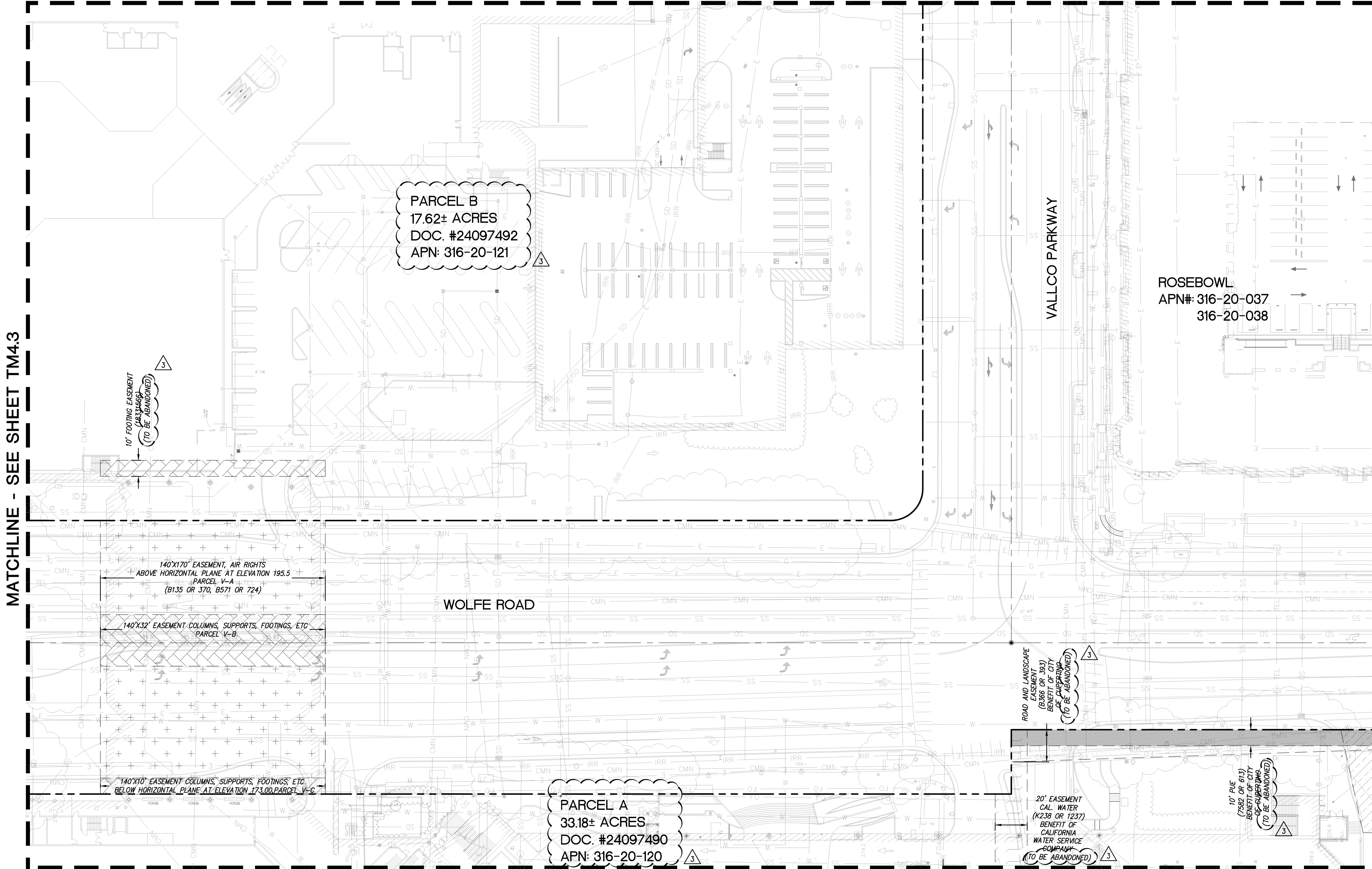
ROSEBOWL
APN#: 316-20-037
316-20-038

PARCEL A
33.18± ACRES
DOC. #24097490
APN: 316-20-120

LEGEND

	PROPERTY LINE
	ADJACENT PROPERTY LINE STREET CENTERLINE (BASED ON CITY MONUMENTATION) EASEMENT LINE
	RELINQUISHED INGRESS/ EGRESS RIGHTS TO ADJACENT PROPERTIES
	PUBLIC UTILITY EASEMENT (P.U.E.)
	ROADWAY EASEMENT
	PUBLIC ACCESS EASEMENT (P.A.E.)
	SANITARY SEWER EASEMENT
	WATER EASEMENT
	AIR RIGHTS EASEMENT
	STORMWATER MANAGEMENT FACILITY EASEMENT
	PUBLIC ROADWAY AND LANDSCAPE EASEMENT
	VEHICULAR AND PEDESTRIAN INGRESS AND EGRESS EASEMENT
	SIDEWALK EASEMENT
	TELEPHONE EASEMENT
	VEHICULAR TUNNEL EASEMENT
	COLUMNS, SUPPORTS, FOOTINGS EASEMENT
	PG&E EASEMENT
	EMERGENCY VEHICLE ACCESS EASEMENT (E.V.A.E.)

NOTES:
1. ONLY EXISTING EASEMENTS ARE SHOWN ON THIS SHEET. ALL NEW EASEMENTS NEEDED FOR THE DEVELOPMENT ARE SHOWN ON TMS SHEETS.

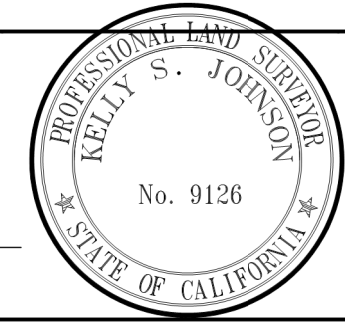


MATCHLINE - SEE SHEET TM4.7

NO PART OF THIS DOCUMENT MAY BE REPRODUCED IN ANY FORM INCLUDING PHOTOCOPY, RECORDING OR ANY INFORMATION RETRIEVABLE AND STORAGE SYSTEM, WITHOUT PERMISSION IN WRITING FROM SANDIS.

SANDIS CIVIL ENGINEERS SURVEYORS PLANNERS
1700 S. Winchester Blvd, Suite 200, Campbell, CA 95008 | P. 408.636.0900 | F. 408.636.0999 | www.sandis.net
SILICON VALLEY TRI-VALLEY CENTRAL VALLEY SACRAMENTO EAST BAY/SF

DATE: 03/23/2022	DATE: MAY 27, 2022
SCALE: 1"=30'	
DRAWN BY: SP	
APPROVED BY: ND	
DRAWING NO.: 215028	KELLY S. JOHNSON P.L.S. NO. 9126, EXPIRES 9-30-22



No.	REVISION/ISSUE	DATE	BY
REV-0	SB-35 DEVELOPMENT APPLICATION	03/27/2018	ND
REV-1	SB-35 APPLICATION REVISIONS	08/06/2018	ND
REV-2	SB-35 APPLICATION CONFORM SET	09/15/2018	ND
REV-3	SB-35 MODIFICATION APPLICATION	05/27/2022	ND

EXISTING PUBLIC AND PRIVATE EASEMENTS AND BOUNDARIES

TENTATIVE SUBDIVISION MAP
VALLCO TOWN CENTER
CUPERTINO CALIFORNIA

SHEET
TM4.4
OF 73 SHEETS
Copyright © 2018 by Sandis