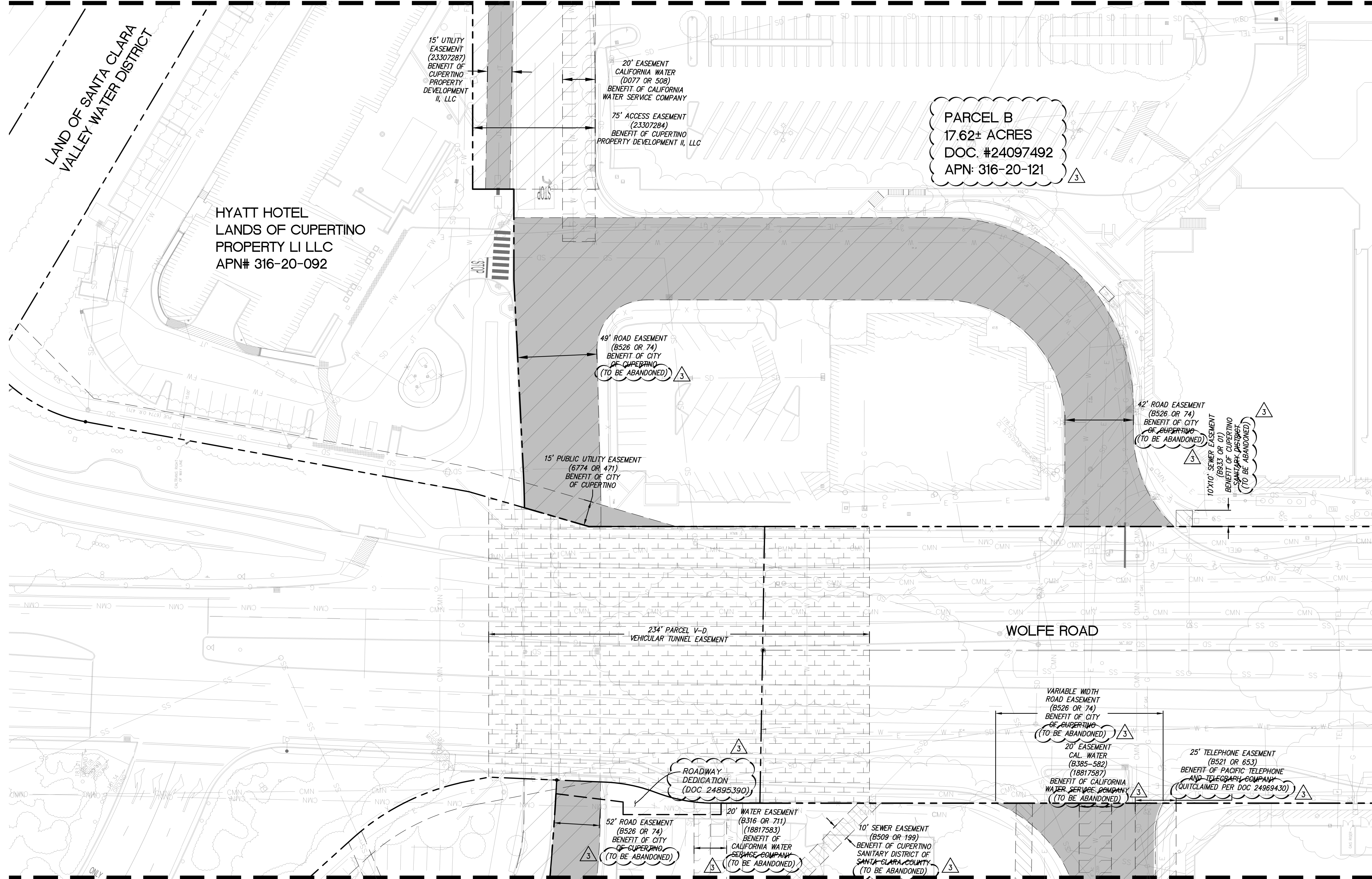


MATCHLINE - SEE SHEET TM4.1



- LEGEND**
- PROPERTY LINE
  - - - ADJACENT PROPERTY LINE STREET CENTERLINE (BASED ON CITY MONUMENTATION) EASEMENT LINE
  - /// RELINQUISHED INGRESS/ EGRESS RIGHTS TO ADJACENT PROPERTIES
  - █ PUBLIC UTILITY EASEMENT (P.U.E.)
  - ▨ ROADWAY EASEMENT
  - ▩ PUBLIC ACCESS EASEMENT (P.A.E.)
  - ▧ SANITARY SEWER EASEMENT
  - ▦ WATER EASEMENT
  - ▥ AIR RIGHTS EASEMENT
  - ▤ STORMWATER MANAGEMENT FACILITY EASEMENT
  - ▣ PUBLIC ROADWAY AND LANDSCAPE EASEMENT
  - ▢ VEHICULAR AND PEDESTRIAN INGRESS AND EGRESS EASEMENT
  - SIDEWALK EASEMENT
  - TELEPHONE EASEMENT
  - ▟ VEHICULAR TUNNEL EASEMENT
  - ▞ COLUMNS, SUPPORTS, FOOTINGS EASEMENT
  - ▝ PG&E EASEMENT
  - ▜ EMERGENCY VEHICLE ACCESS EASEMENT (E.V.A.E.)

**NOTES:**

- ONLY EXISTING EASEMENTS ARE SHOWN ON THIS SHEET. ALL NEW EASEMENTS NEEDED FOR THE DEVELOPMENT ARE SHOWN ON THIS SHEETS.

MATCHLINE - SEE SHEET TM4.4

MATCHLINE - SEE SHEET TM4.6

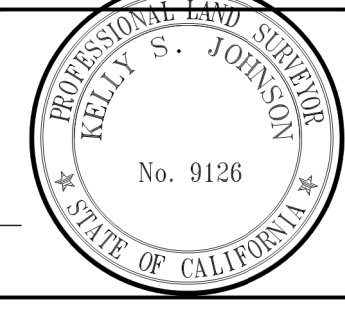
NO PART OF THIS DOCUMENT MAY BE REPRODUCED IN ANY FORM INCLUDING PHOTOCOPY, RECORDING OR ANY INFORMATION RETRIEVABLE AND STORAGE SYSTEM, WITHOUT PERMISSION IN WRITING FROM SANDIS.

**SANDIS** CIVIL ENGINEERS SURVEYORS PLANNERS

1700 S. Winchester Blvd, Suite 200, Campbell, CA 95008 | P. 408.636.0900 | F. 408.636.0999 | www.sandis.net

SILICON VALLEY TRI-VALLEY CENTRAL VALLEY SACRAMENTO EAST BAY/SF

DATE: 03/23/2022	DATE: MAY 27, 2022
SCALE: 1"=30'	
DRAWN BY: SP	
APPROVED BY: ND	
DRAWING NO.: 215028	KELLY S. JOHNSON P.L.S. NO. 9126, EXPIRES 9-30-22



No.	REVISION/ISSUE	DATE	BY
REV-0	SB-35 DEVELOPMENT APPLICATION	03/27/2018	ND
REV-1	SB-35 APPLICATION REVISIONS	08/06/2018	ND
REV-2	SB-35 APPLICATION CONFORM SET	09/15/2018	ND
REV-3	SB-35 MODIFICATION APPLICATION	05/27/2022	ND

EXISTING PUBLIC AND PRIVATE EASEMENTS AND BOUNDARIES

TENTATIVE SUBDIVISION MAP  
VALLCO TOWN CENTER  
CUPERTINO CALIFORNIA

SHEET  
**TM4.3**  
OF 73 SHEETS  
Copyright © 2018 by Sandis