

OWNER - VALLCO PROPERTY OWNER LLC
965 PAGE MILL ROAD, PALO ALTO, CA 94304
T. 650-344-1500

ARCHITECTURE - RAFAEL VINOLY ARCHITECTS
50 VANDAM STREET, NEW YORK, NY 10013
T. 212-924-5000

ARCHITECTURE - RAFAEL VINOLY ARCHITECTS
1033 N. WOLFE ROAD, CLIPPERNO CA 95014
T. 408-627-7000

LANDSCAPE ARCHITECTURE - OLIN PARTNERSHIP LTD.
150 S. INDEPENDENCE MALL, W. SUITE 1103, PHILADELPHIA, PA 19106
T. 215-440-0000

CIVIL - SANDS CIVIL ENGINEERS SURVEYORS PLANNERS, INC.
1700 S. WINCHESTER BLVD., SUITE 200, CAMPBELL, CA 95008
T. 408-836-0500

TRANSPORTATION ENGINEERING - ARUP NORTH AMERICA, LTD.
860 MISSION STREET SUITE 700 SAN FRANCISCO CA 94103
T. 415-957-9445

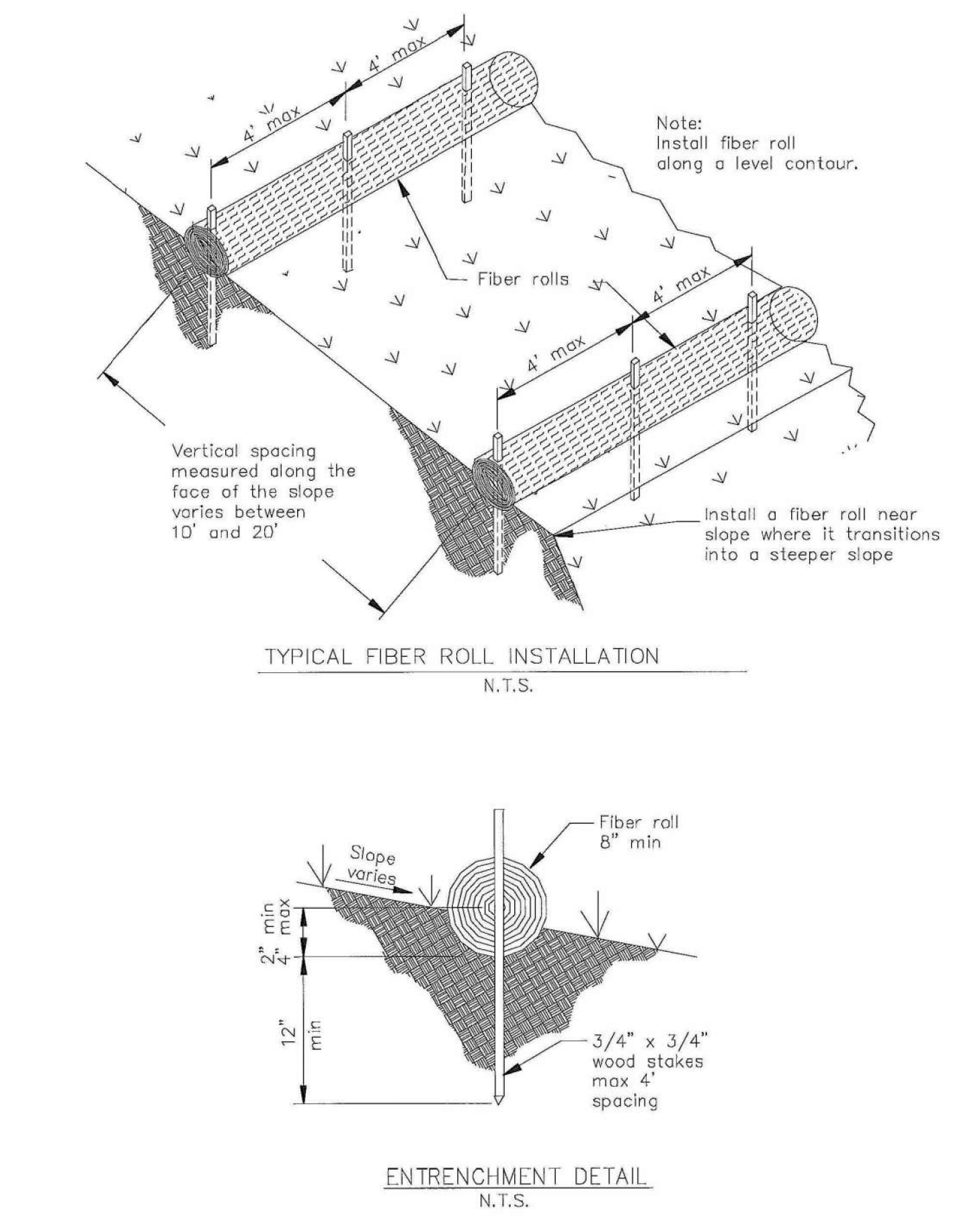
LIGHTING - ONE LUX STUDIO
158 WEST 29TH STREET, 10TH FLOOR, NEW YORK, NY 10001
T. 212-301-9790

SIGNAGE - EXIT
1817 JFK BLVD, SUITE 1665, PHILADELPHIA, PA 19103
T. 215-961-1950

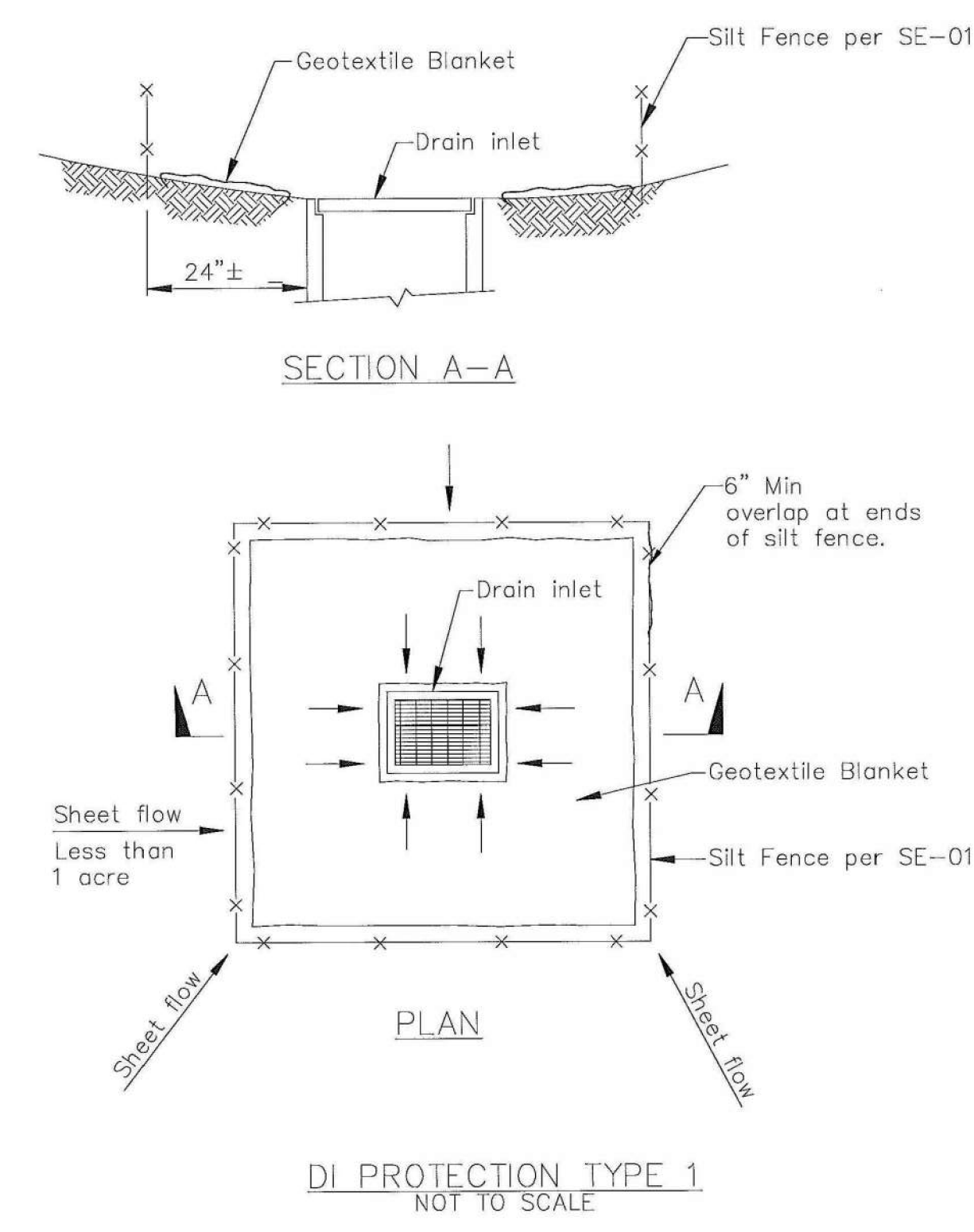
PARKING ENGINEERING - WATRY DESIGN, INC.
2096 GATEWAY PLACE, SUITE 550, SAN JOSE, CA 95110
T. 408-392-7200

WASTE MANAGEMENT - CH2M HILL INTERNATIONAL
535 NORTH BRAN BLVD, STE 710 GLENDALE, CA 92103
T. 825-441-7700

Fiber Rolls SE-5

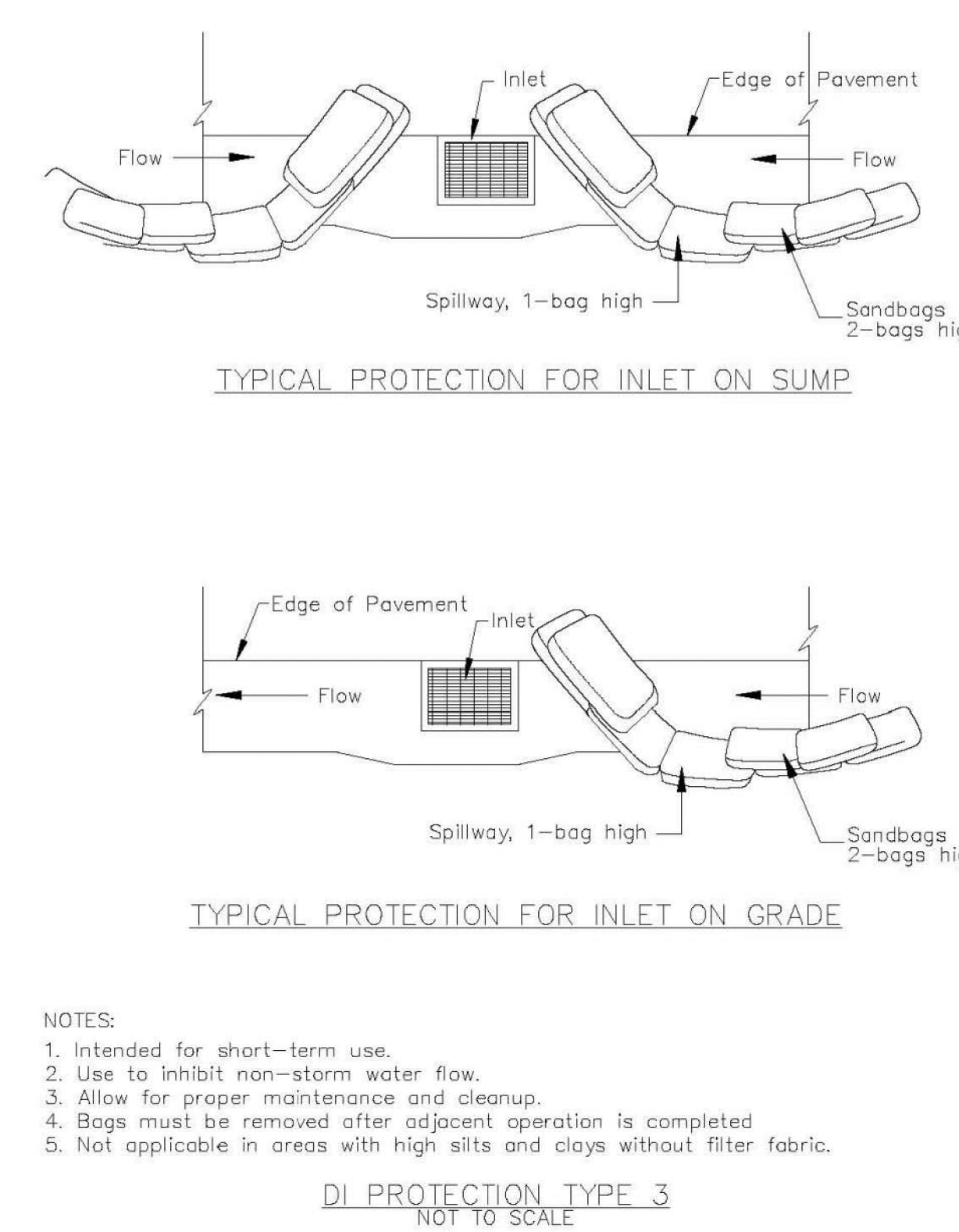


Storm Drain Inlet Protection SE-10

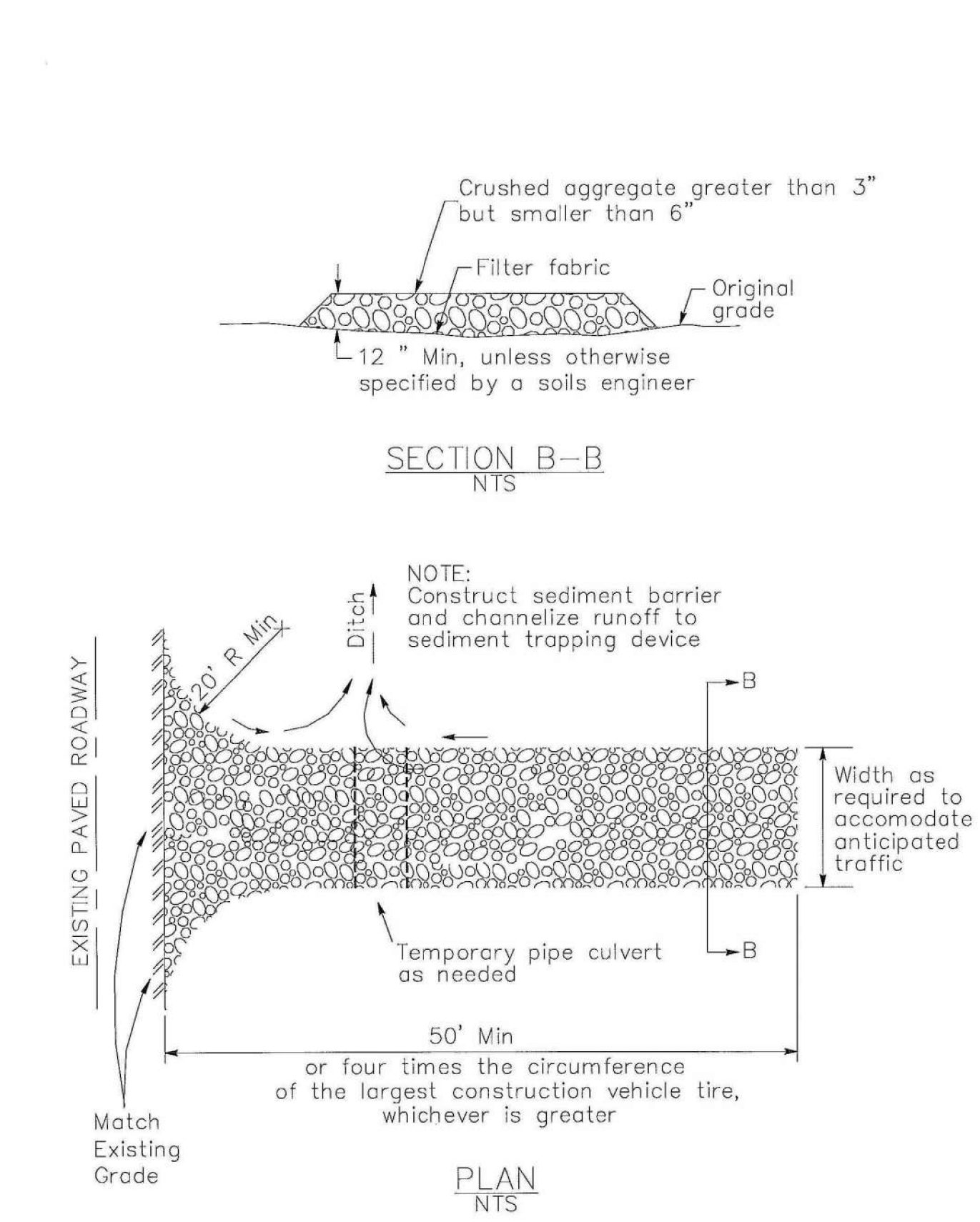


- NOTES:
1. For use in areas where grading has been completed and final soil stabilization and seeding are pending.
 2. Not applicable in paved areas.
 3. Not applicable with concentrated flows.

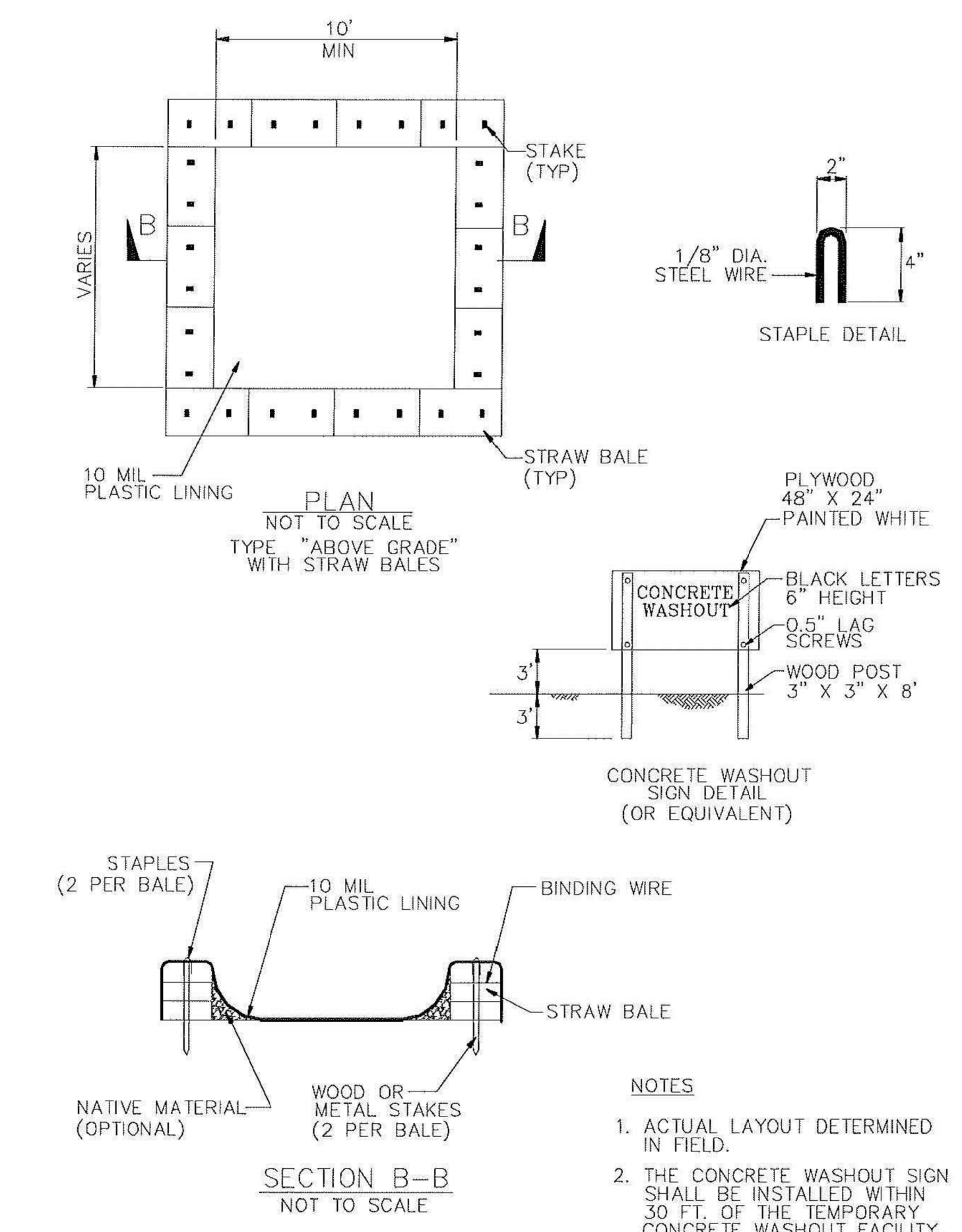
SE-10 Storm Drain Inlet Protection



Stabilized Construction Entrance/Exit TC-1



Concrete Waste Management WM-8

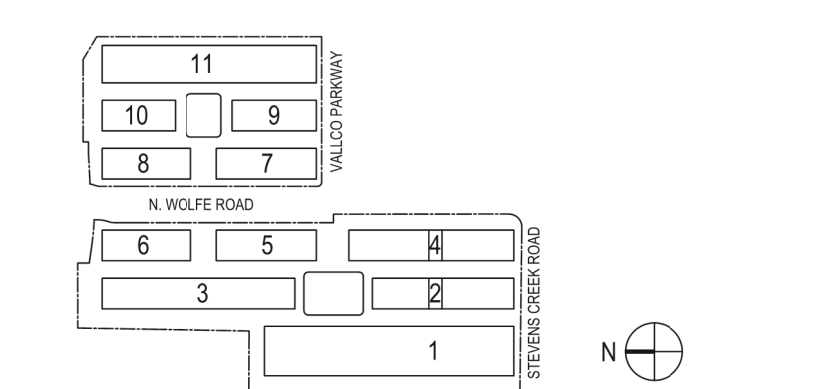


NOT FOR CONSTRUCTION

DISCLAIMER
THE ARCHITECT / ENGINEER SHALL HAVE NO RESPONSIBILITY FOR ANY LIABILITY, LOSS, COST, DAMAGE OR EXPENSE ARISING FROM OR RELATING TO ANY USE OF THIS DOCUMENT FOR ANY PURPOSE OTHER THAN ITS INTENDED PURPOSE ON THIS PROJECT. THIS DOCUMENT IS TO BE CONSIDERED IN CONJUNCTION WITH ALL RELATED DOCUMENTATION. ANY DISCREPANCIES IDENTIFIED IN THIS DOCUMENT MUST BE REPORTED IMMEDIATELY TO THE ARCHITECT BEFORE PROCEEDING. CONTRACTORS MUST VERIFY ALL DIMENSIONS PRIOR TO PROCEEDING WITH ANY WORK. ONLY FIGURED DIMENSIONS ARE TO BE USED FOR VERIFICATION.

SB-35 DEVELOPMENT APPLICATION

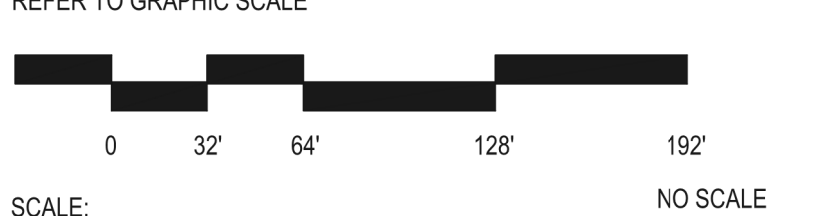
REV	DESCRIPTION	DATE
REV.0	SB-35 DEVELOPMENT APPLICATION	03/27/2018
REV.1	SB-35 APPLICATION REVISIONS	06/06/2018
REV.2	SB-35 APPLICATION CONFORM SET	09/15/2018



ARCHITECTS PROJECT NUMBER: 708011

PROJECT PHASE: SB-35 DEVELOPMENT APPLICATION

IF THIS DRAWING IS NOT 36" X 48" IT IS A REDUCED PRINT. REFER TO GRAPHIC SCALE



WATER POLLUTION CONTROL DETAIL

SHEET TITLE:

P-0412

SHEET NUMBER: 1