

WATER POLLUTION CONTROL DRAWING LEGEND

- STABILIZED EXIT (TC-1) (P-0412)
- CONCRETE WASHOUT (MU-6) (P-0413)
- FIBER ROLL (SC-6) (P-0417)
- CONSTRUCTION FENCE
- SILT FENCE
- GRAVEL BAG BERM
- INLET PROTECTION (SC-10) (P-0417)
- SITE STORMWATER DISCHARGE POINT / SAMPLING LOCATION
- APPROXIMATE AREA OF CONSTRUCTION DISTURBANCE - AREA TO COMPLY WITH REQUIREMENTS IN PROJECT SWPPP

WATER POLLUTION CONTROL NOTES

- A. TEMPORARY CONSTRUCTION ENTRANCE/EXIT LOCATION SHOWN IS APPROXIMATE. CONTRACTOR TO PROVIDE LOCATION WHERE APPROPRIATE.
- B. THIS PLAN REPRESENTS POSSIBLE WATER POLLUTION CONTROL MEASURES INCLUDING EROSION CONTROL AND SEDIMENT CONTROL.
- C. EXISTING SURFACES SHALL BE UNDISTURBED TO THE EXTENT PRACTICAL.
- D. GROUND WATER SHALL NOT BE DISCHARGED WITH STORM WATER. GROUND WATER DEWATERING OPERATIONS SHALL BE COORDINATED AS NEEDED WITH OWNER.
- E. CONTRACTOR SHALL PROVIDE EFFECTIVE SOIL COVER FOR AREAS OF CONSTRUCTION ACTIVITY THAT HAVE BEEN DISTURBED AND ARE NOT SCHEDULED TO BE ACTIVE FOR AT LEAST 14 DAYS.
- F. ALL EROSION CONTROL AND SEDIMENT CONTROLS TO BE OBTAINED INSTALLED AND MAINTAINED AS REQUIRED IN PROJECT SWPPP.
- G. CONTRACTOR TO INSTALL RUN-ON AND RUN-OFF CONTROL MEASURES ACCORDING TO PLANS OR AS NECESSARY TO ENSURE SEDIMENT IS NOT TRANSPORTED FROM SITE.
- H. CONTRACTOR TO PROVIDE BACK-UP EROSION PREVENTION MEASURES (SOIL STABILIZATION) WITH SEDIMENT CONTROL MEASURES SUCH AS STRAW MATS, SILT FENCE, GRAVEL INLET FILTERS, AND/OR SEDIMENT TRAPS OR BASINS. ENSURE CONTROL MEASURES ARE ADEQUATE IN PLACE, AND IN OPERABLE CONDITIONS. SEDIMENT CONTROLS, INCLUDING INLET PROTECTION, ARE NECESSARY BUT SHOULD BE A SECONDARY DEFENSE BEHIND GOOD EROSION CONTROL MEASURES.
- I. STOCKPILE LOCATION(S) TO BE DETERMINED BY THE CONTRACTOR. COORDINATE WITH SITE GPS.
- J. ALL CONCRETE TRUCKS TO USE CHUTE WASH BUCKETS FOR CONCRETE RINSE. ALL CONCRETE PUMPS TO CAPTURE CONCRETE RINSE IN SECONDARY CONTAINMENT AND PROPERLY DISPOSE.
- K. STREET SWEEPING SHALL BE CHECKED DAILY TO ENSURE DEPOSITED SEDIMENT AND DEBRIS DOES NOT ENTER THE STORM DRAIN SYSTEM. USE REGENERATIVE VACUUM STREET CLEANER TO MITIGATE AIR AND WATER POLLUTION.
- L. RUNOFF THAT HAS CONTACTED AMENDED SOIL AREAS SHALL NOT BE ALLOWED TO LEAVE THE SITE OR ENTER THE STORM DRAIN SYSTEM.
- M. PRIOR TO PERMIT, A SWPPP WILL BE FILED WITH THE STATE WATER RESOURCES CONTROL BOARD AND WILL SUPERSEDE THIS SHEET. THE SWPPP WILL CONFORM TO ALL STATE REQUIREMENTS.
- N. AN APPROVED PEDESTRIAN ACCESS ALONG STEVENS CREEK BOULEVARD AND N. WOLFE ROAD MUST BE MAINTAINED DURING ALL PHASES OF CONSTRUCTION.
- O. VEHICULAR ACCESS TO THE NEIGHBORING PROPERTY SHALL BE MAINTAINED DURING ALL PHASES OF CONSTRUCTION.

VALLCO TOWN CENTER

OWNER - VALLCO PROPERTY OWNER LLC
 965 PAGE MILL ROAD, PALO ALTO, CA 94304
 T. 650-344-1500

ARCHITECTURE - RAFAEL VINOLY ARCHITECTS
 50 WANDAM STREET, NEW YORK, NY 10013
 T. 212-924-5000

ARCHITECTURE - RAFAEL VINOLY ARCHITECTS
 1033 N. WOLFE ROAD, CUPERTINO, CA 95014
 T. 408-627-7000

LANDSCAPE ARCHITECTURE - OLIN PARTNERSHIP LTD.
 192 S. INDEPENDENCE HALL, W. SHITE 1123, PHILADELPHIA, PA 19103
 T. 215-440-0000

CIVIL - SANDS CIVIL ENGINEERS SURVEYORS PLANNERS, INC.
 1700 S. WINCHESTER BLVD., SUITE 200, CAMPBELL, CA 95008
 T. 408-636-0500

TRANSPORTATION ENGINEERING - ARUP NORTH AMERICA, LTD.
 860 MISSION STREET, SUITE 700 SAN FRANCISCO CA 94105
 T. 415-957-9445

LIGHTING - ONE LUX STUDIO
 158 WEST 29TH STREET, 10TH FLOOR, NEW YORK, NY 10001
 T. 212-321-9790

SIGNAGE - EXIT
 1817 JFK BLVD, SUITE 1865, PHILADELPHIA, PA 19103
 T. 215-961-1500

PARKING ENGINEERING - WATRY DESIGN, INC.
 2096 GATEWAY PLACE, SUITE 550, SAN JOSE, CA 95110
 T. 408-292-7500

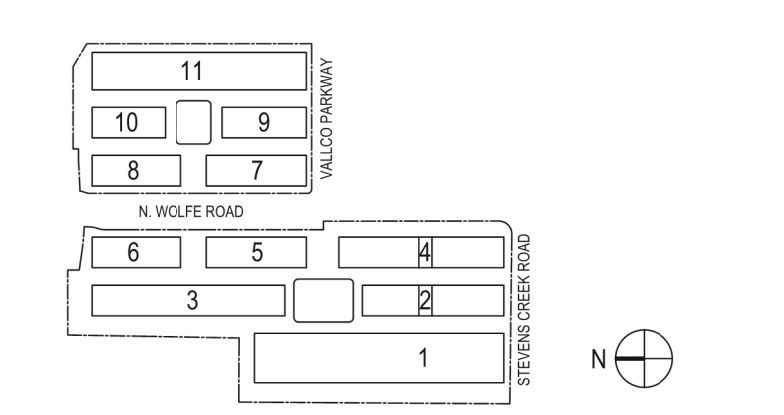
WASTE MANAGEMENT - CINLITTLE INTERNATIONAL
 535 NORTH BRAN BLVD, STE 710 GLENDALE, CA 92103
 T. 825-441-7700

NOT FOR CONSTRUCTION

DISCLAIMER
 THE ARCHITECT/ENGINEER SHALL HAVE NO RESPONSIBILITY FOR ANY LIABILITY, LOSS, COST, DAMAGE OR EXPENSE ARISING FROM OR RELATING TO ANY USE OF THIS DOCUMENT FOR ANY PURPOSE OTHER THAN ITS INTENDED PURPOSE ON THIS PROJECT. THIS DOCUMENT IS TO BE CONSIDERED IN CONJUNCTION WITH ALL RELATED DOCUMENTATION. ANY DISCREPANCIES IDENTIFIED IN THIS DOCUMENT MUST BE REPORTED IMMEDIATELY TO THE ARCHITECT BEFORE PROCEEDING. CONTRACTORS MUST VERIFY ALL DIMENSIONS PRIOR TO PROCEEDING WITH ANY WORK. ONLY FIGURED DIMENSIONS ARE TO BE USED FOR VERIFICATION.

SB-35 DEVELOPMENT APPLICATION

REV	DESCRIPTION	DATE
REV.0	SB-35 DEVELOPMENT APPLICATION	03/27/2018
REV.1	SB-35 APPLICATION REVISIONS	06/06/2018
REV.2	SB-35 APPLICATION CONFORM SET	09/15/2018



KEY PLAN AND NORTH ARROW

ARCHITECTS PROJECT NUMBER 708011

PROJECT PHASE SB-35 DEVELOPMENT APPLICATION

IF THIS DRAWING IS NOT 36"x48" IT IS A REDUCED PRINT. REFER TO GRAPHIC SCALE.

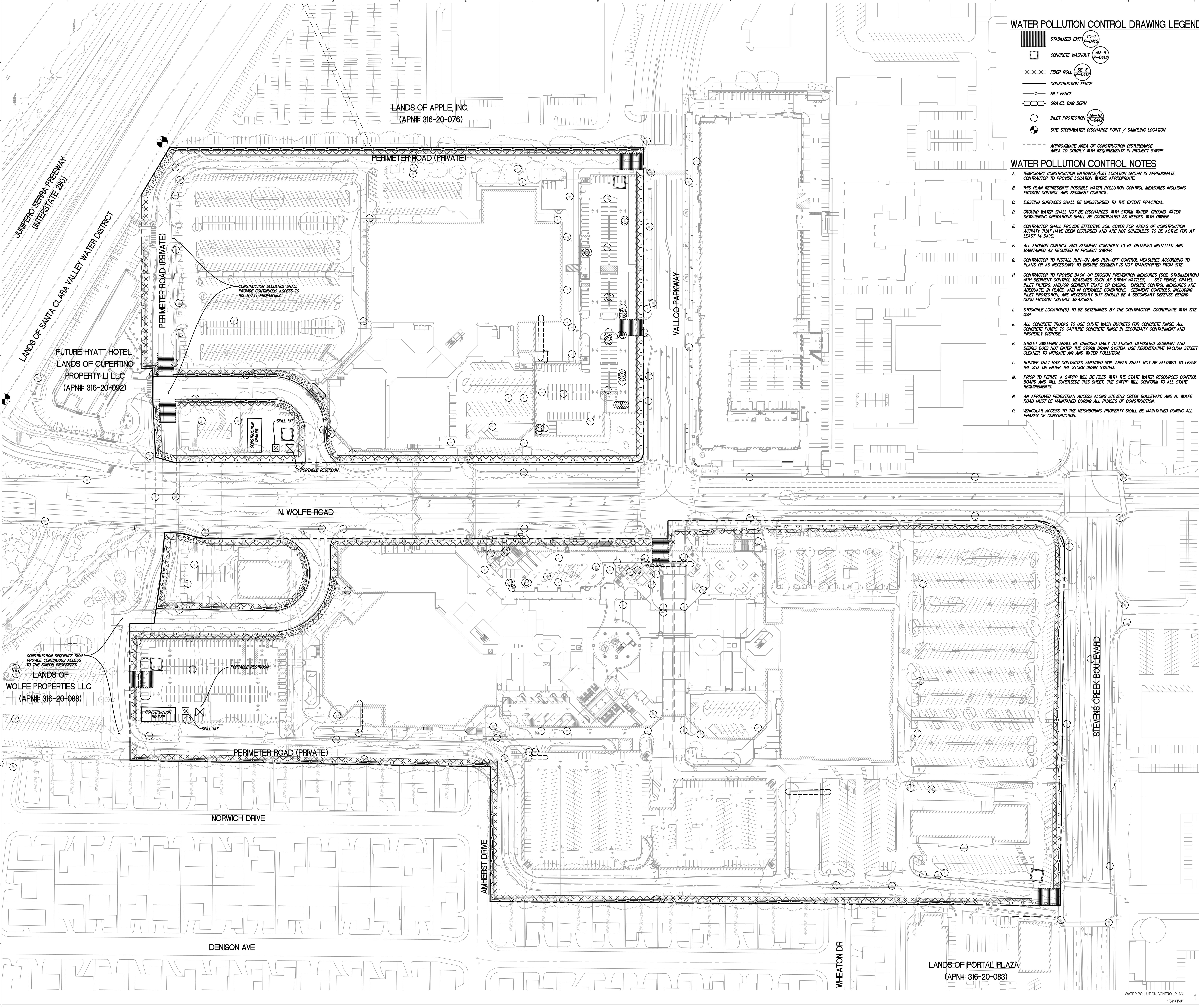


SCALE: 1/8"=1'-0"

WATER POLLUTION CONSTRUCTION PLAN

SHEET TITLE

P-0411



WATER POLLUTION CONTROL PLAN
 156"x11'-0"