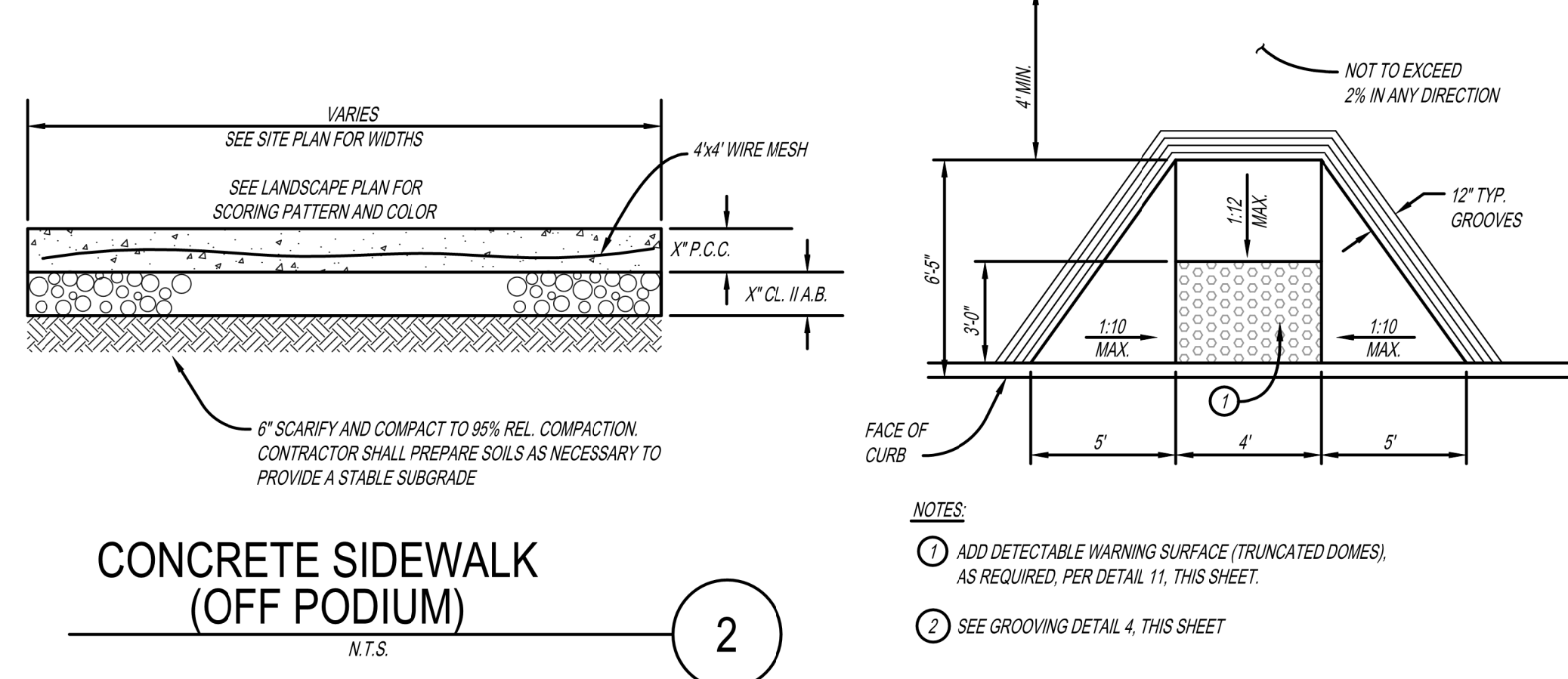
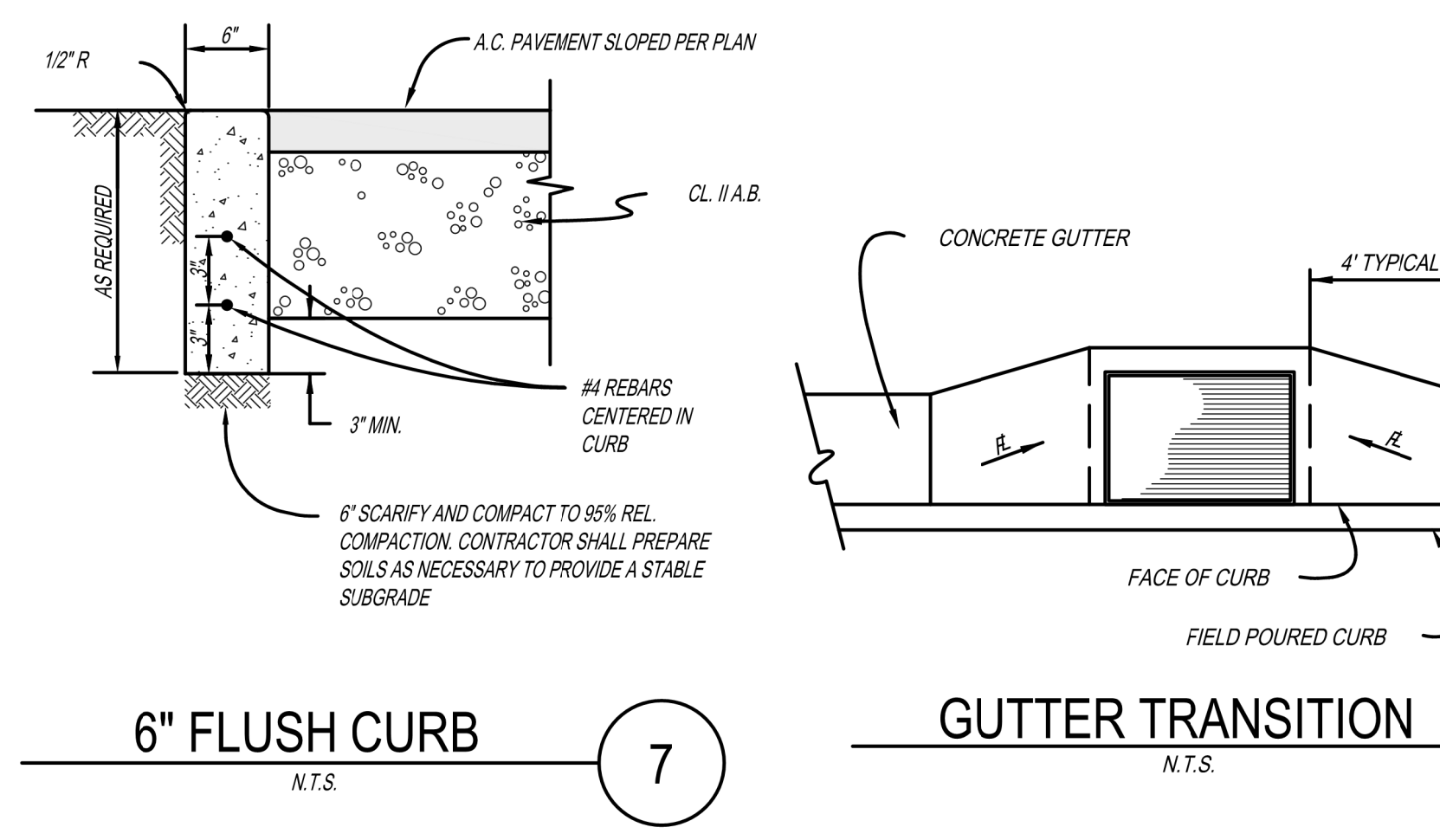


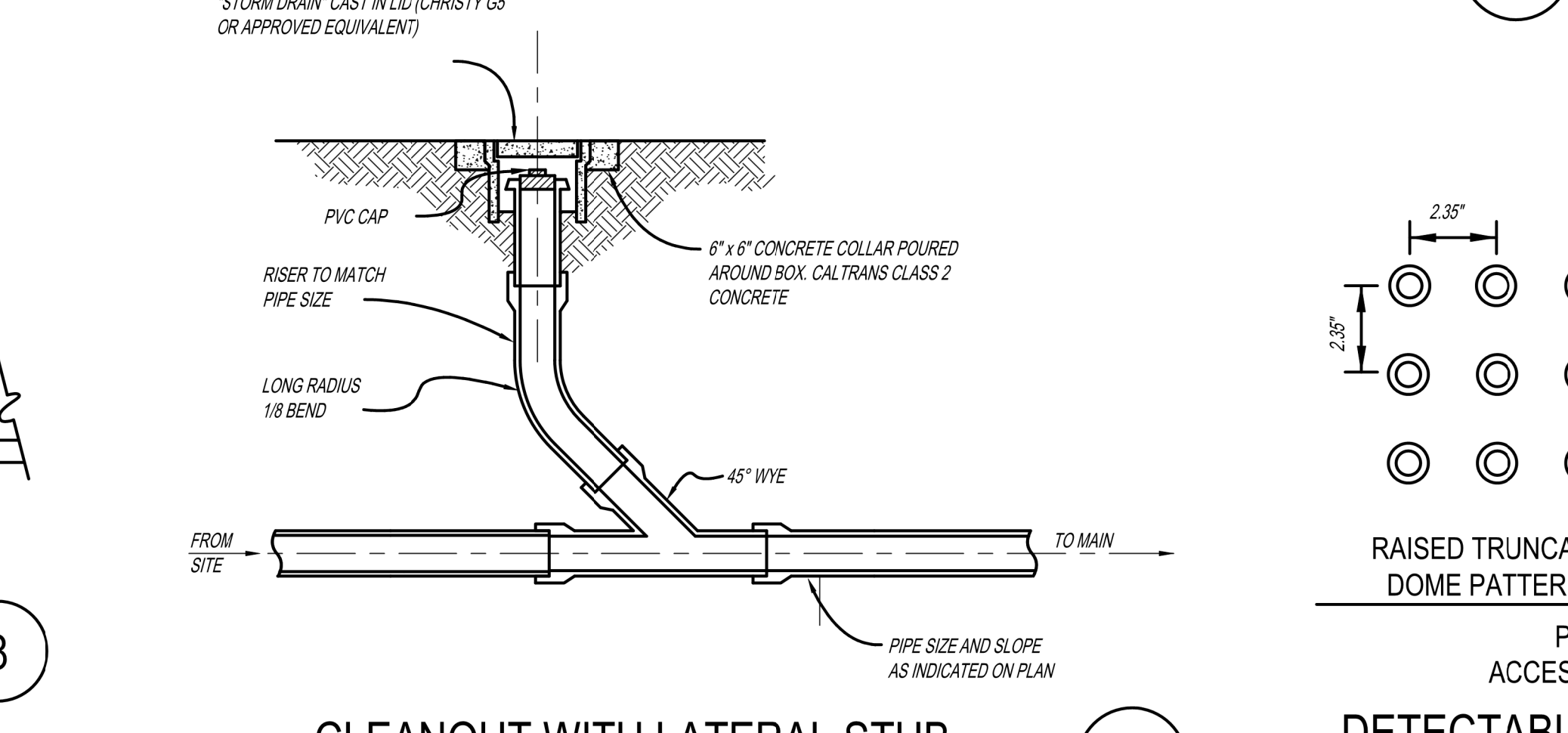
ASPHALT PAVEMENT SECTION (OFF PODIUM)



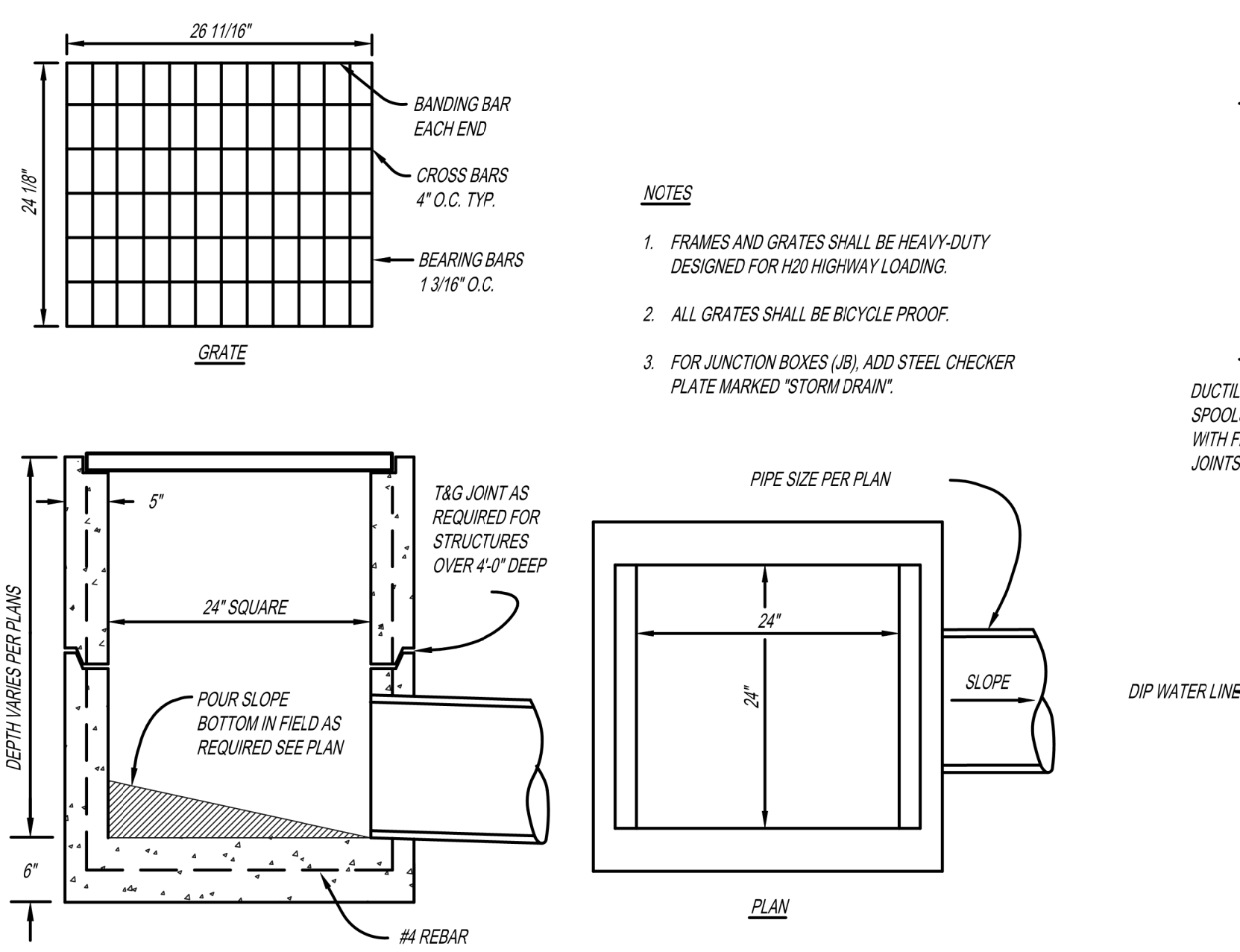
CONCRETE SIDEWALK (OFF PODIUM)



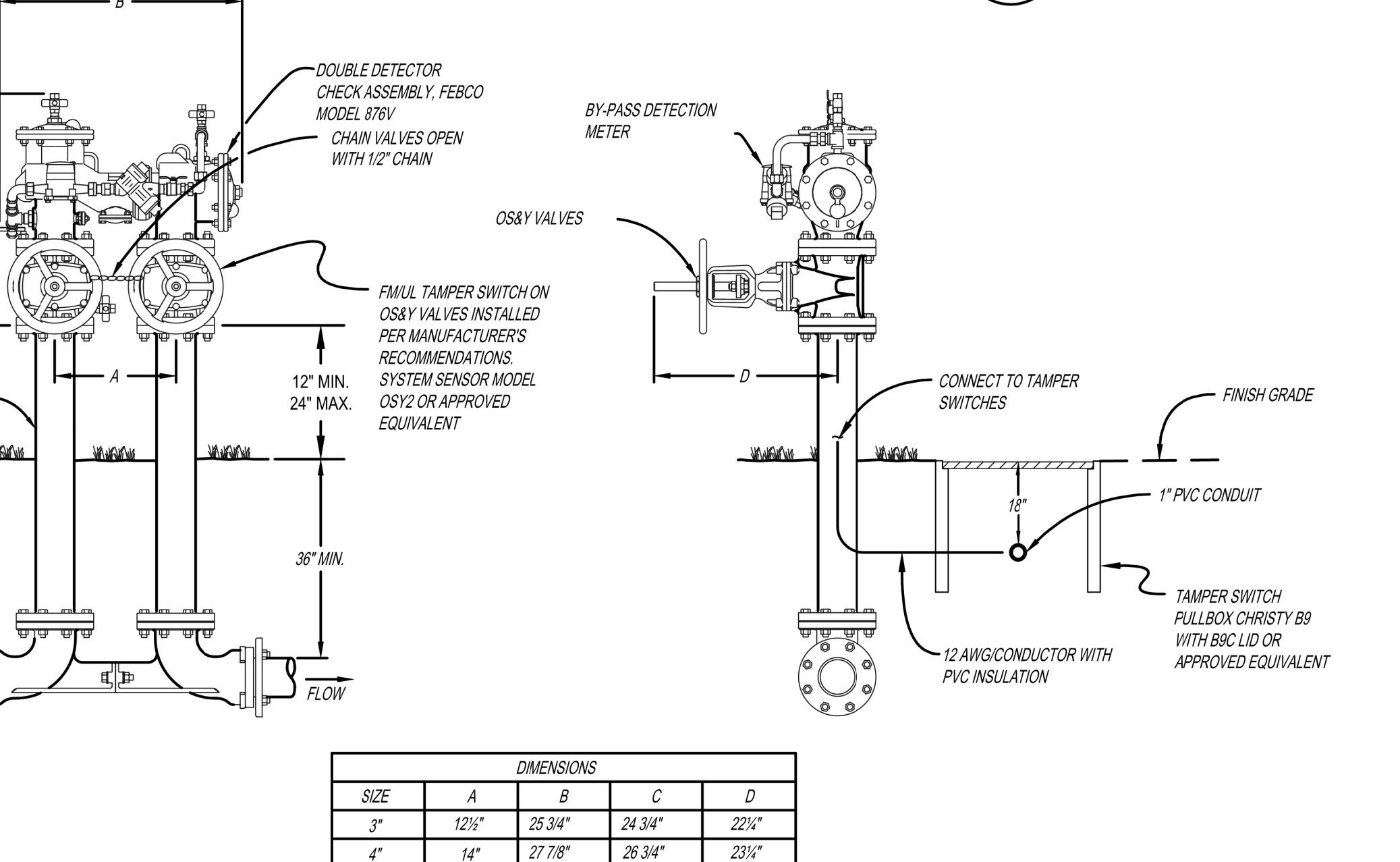
6\"/>



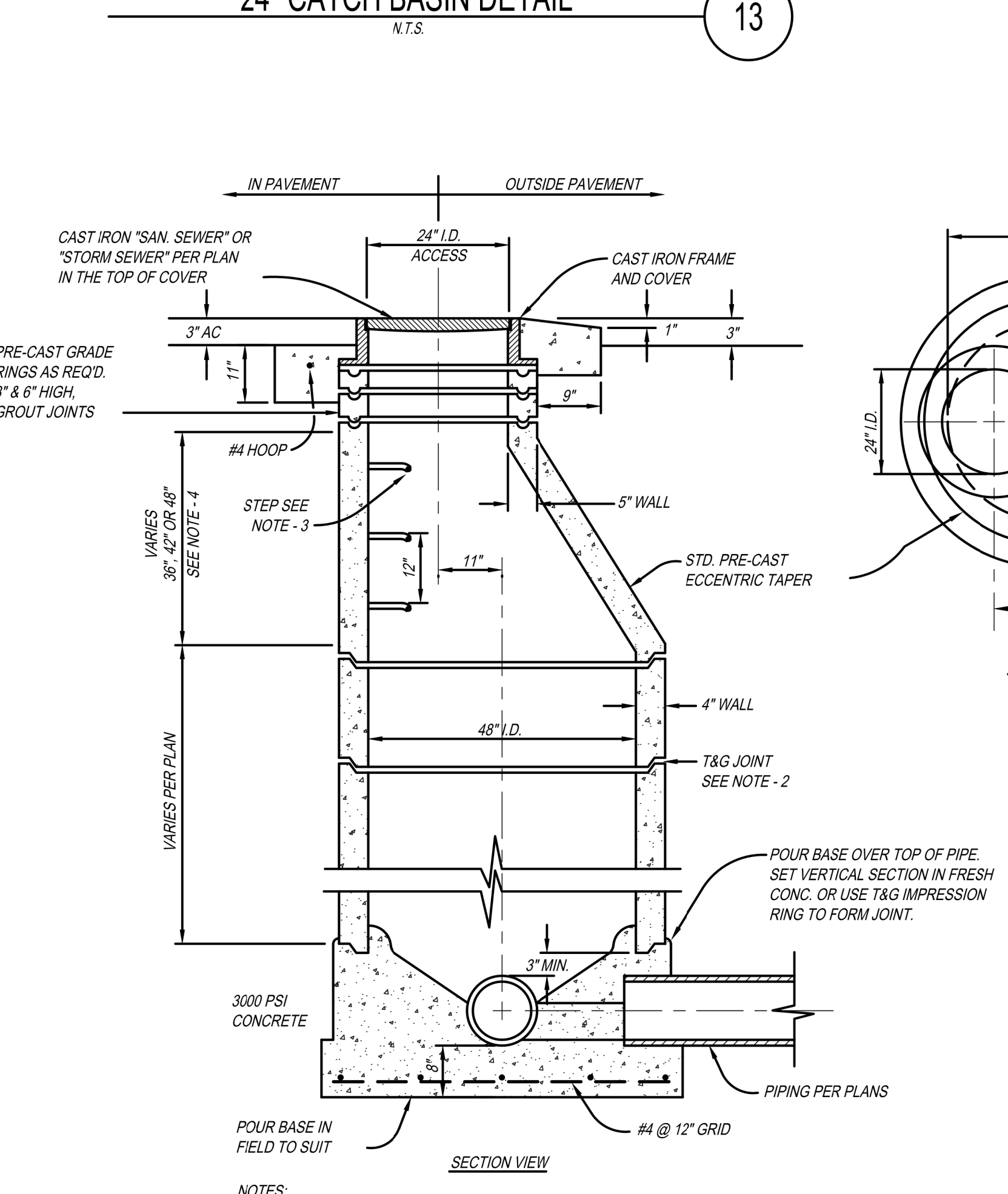
CLEANOUT WITH LATERAL STUB



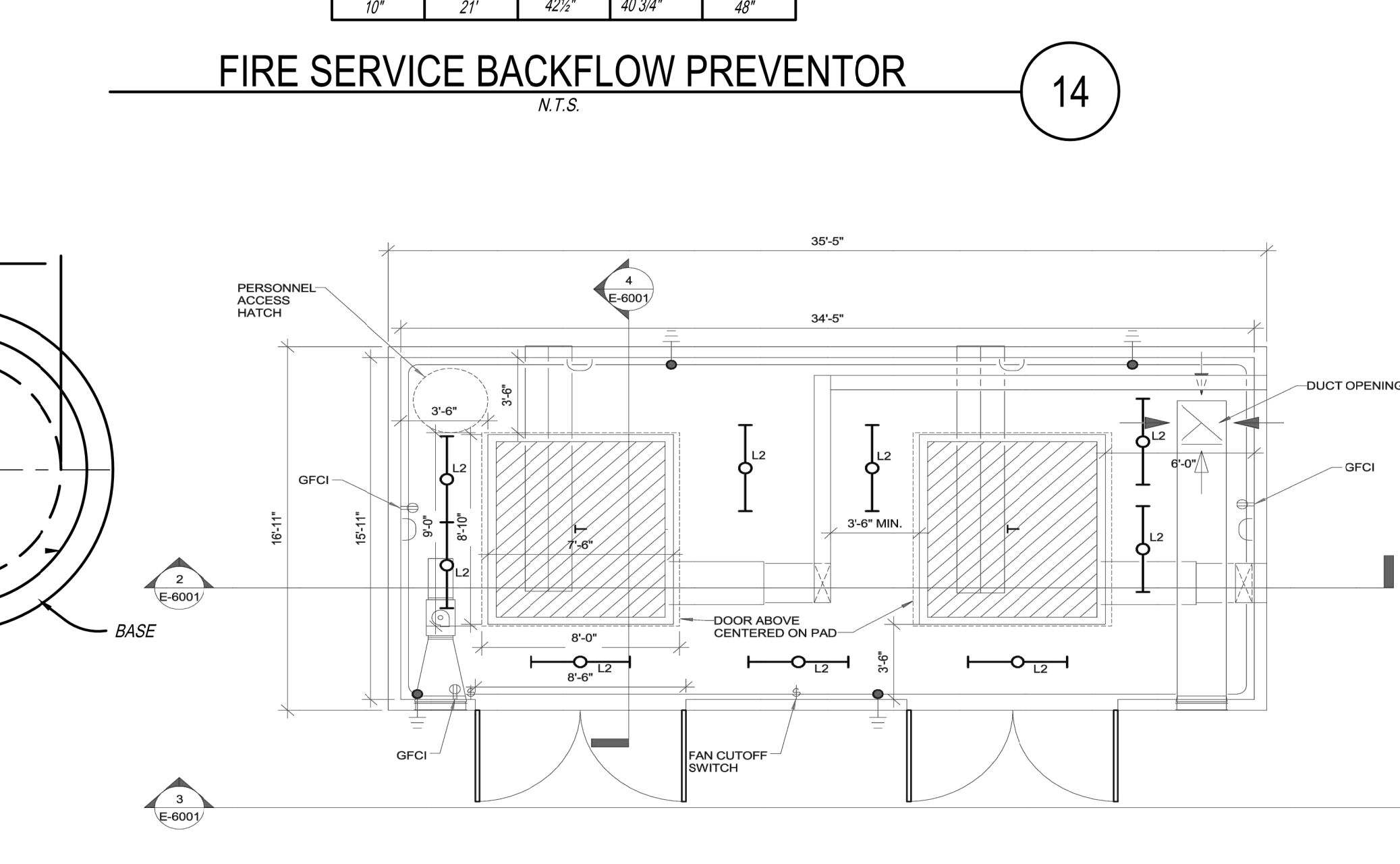
24\"/>



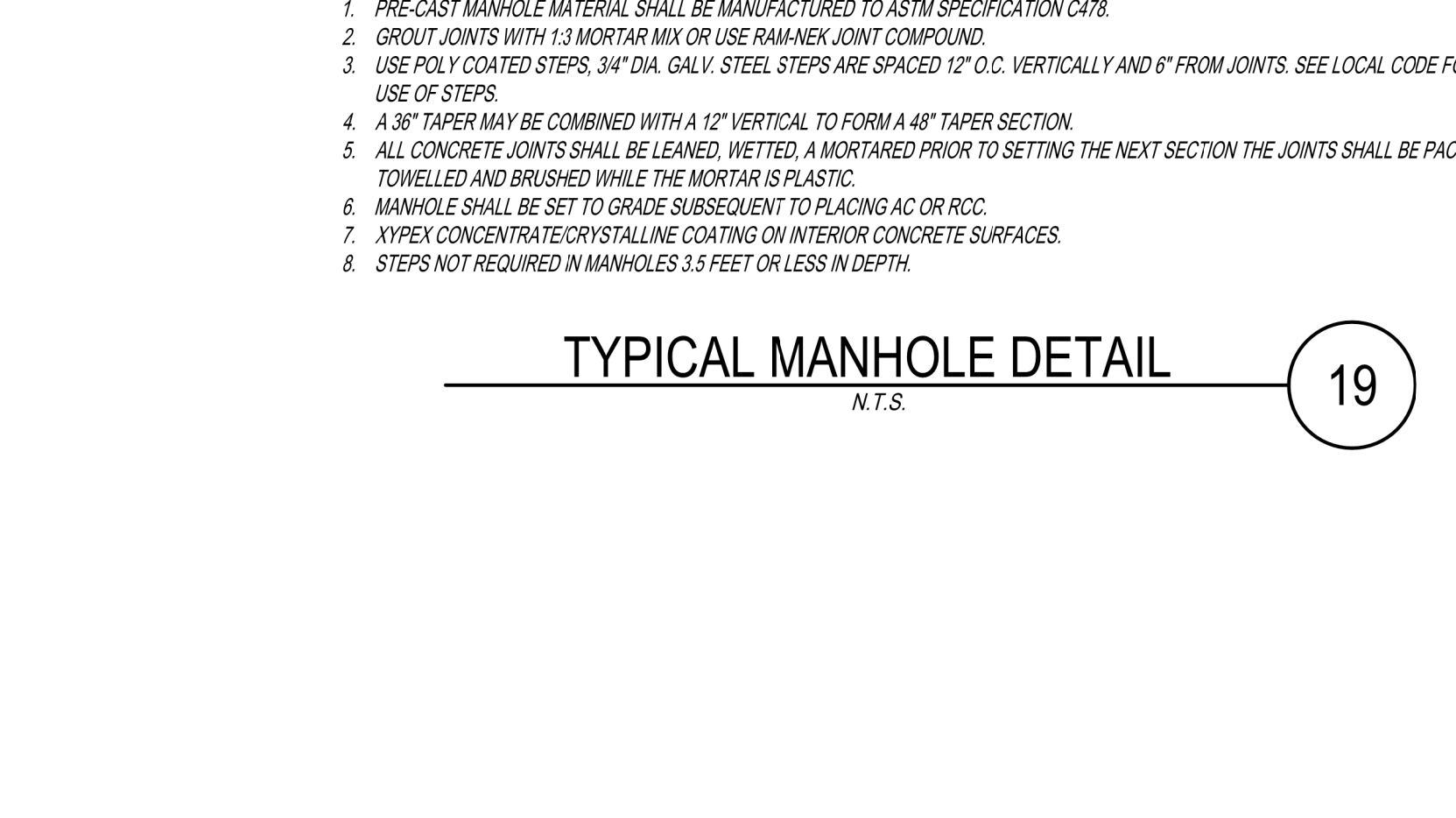
FIRE SERVICE BACKFLOW PREVENTOR



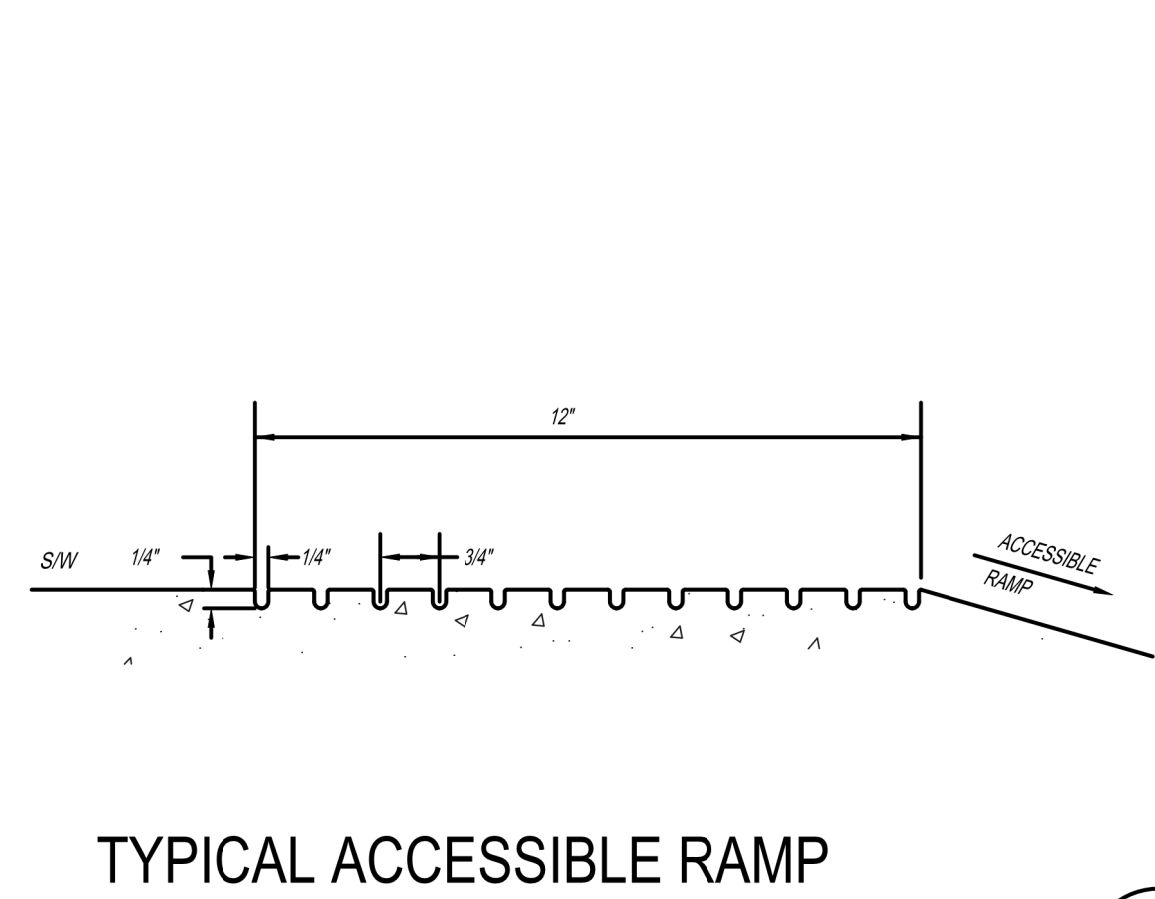
TYPICAL MANHOLE DETAIL



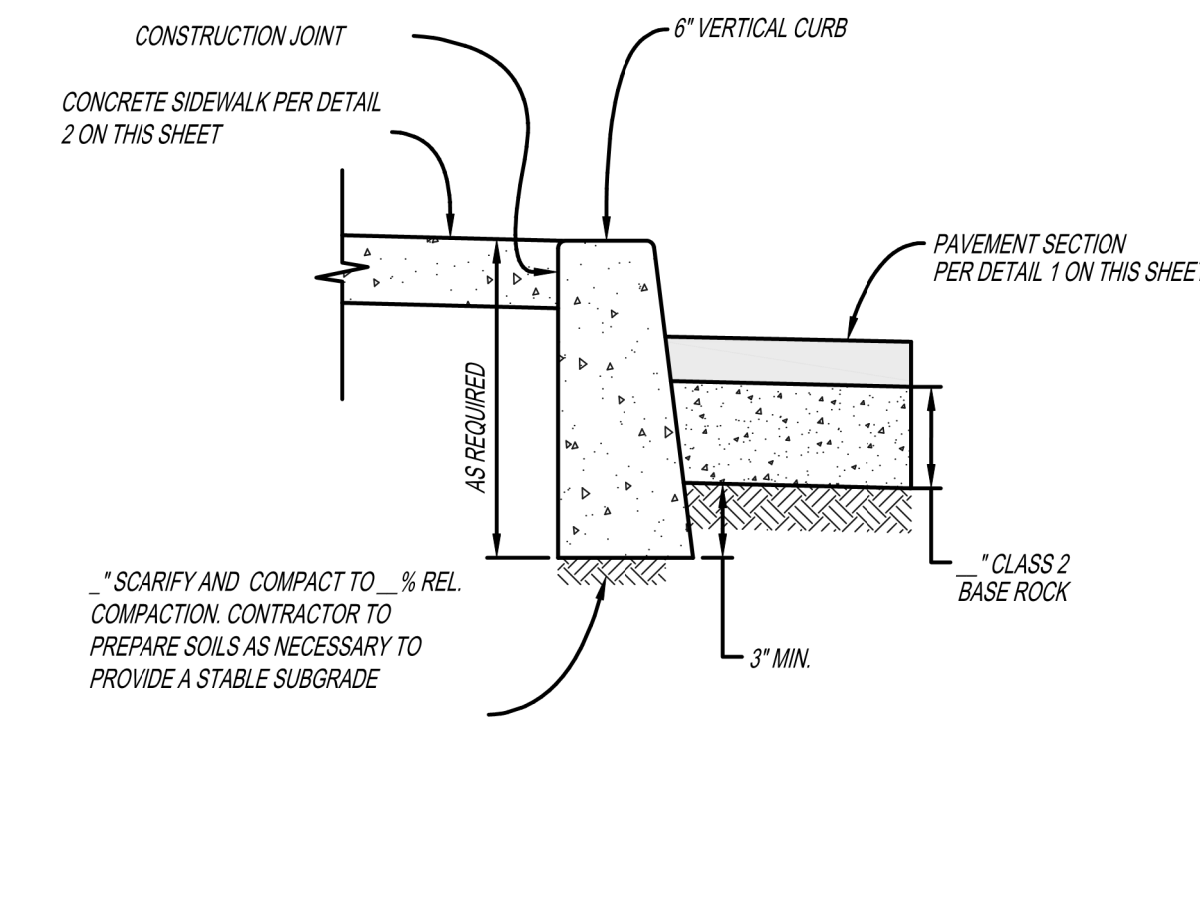
2 XFMR VAULT PLAN VIEW



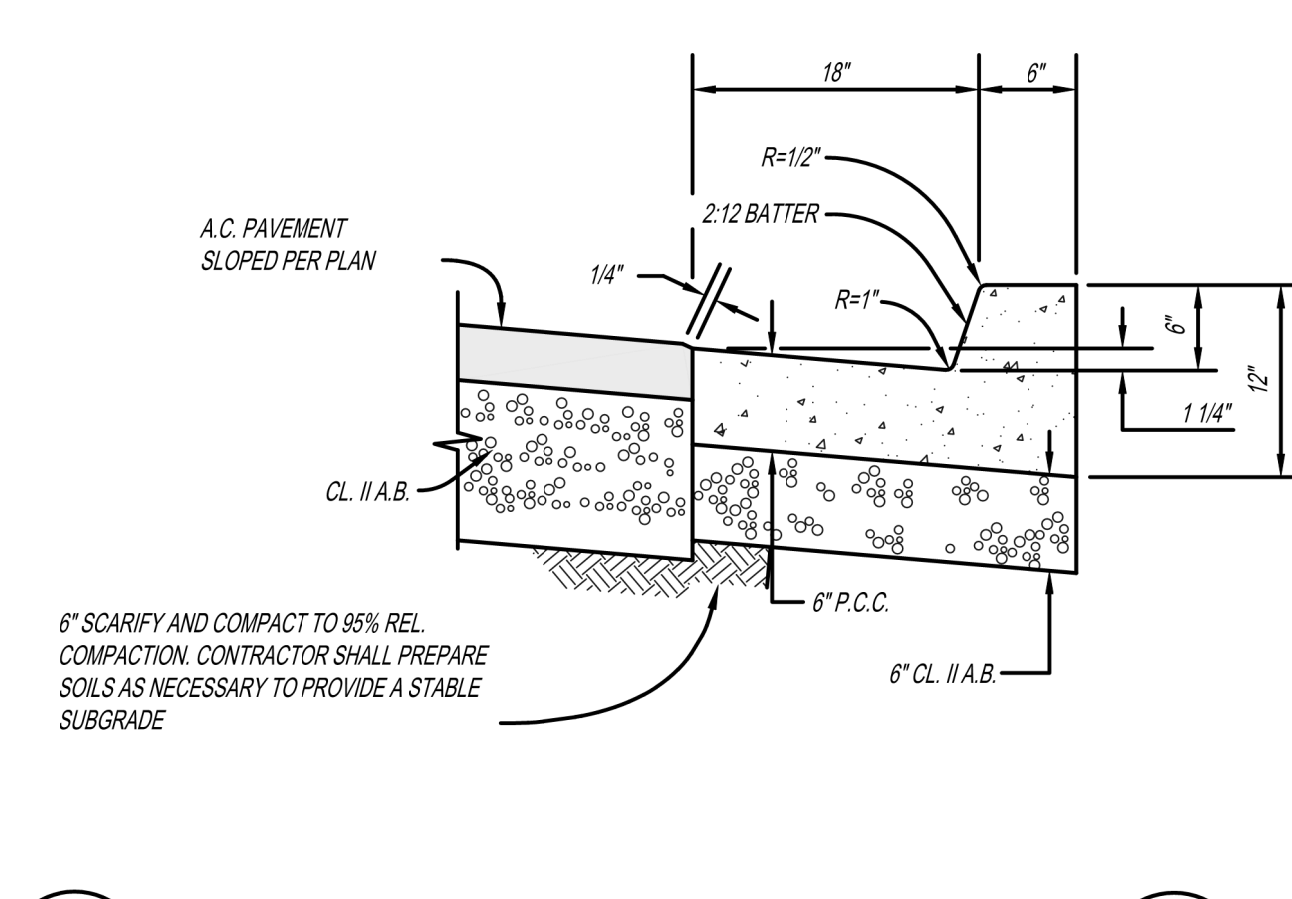
VENTILATION AND ENTRANCE DETAIL



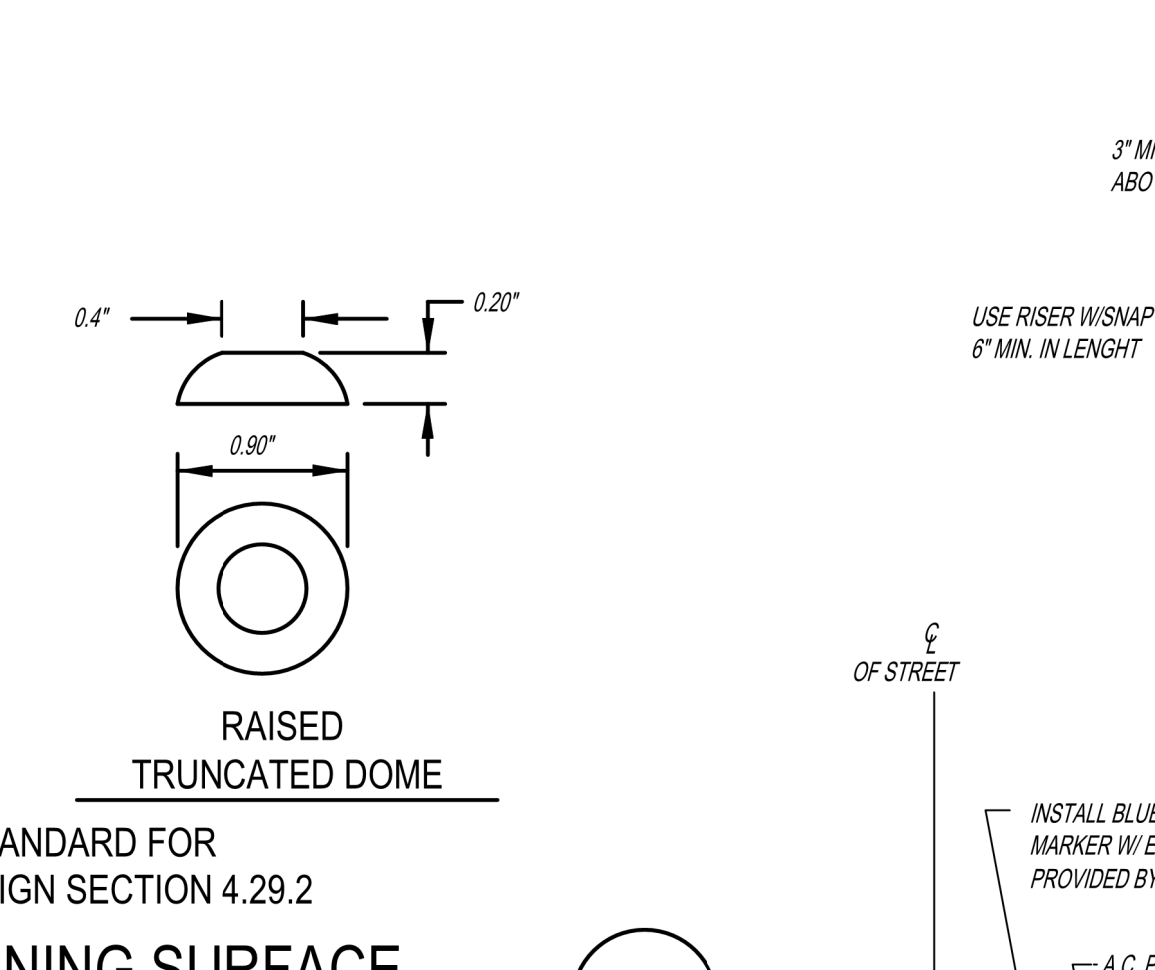
TYPICAL ACCESSIBLE RAMP GROOVING DETAIL



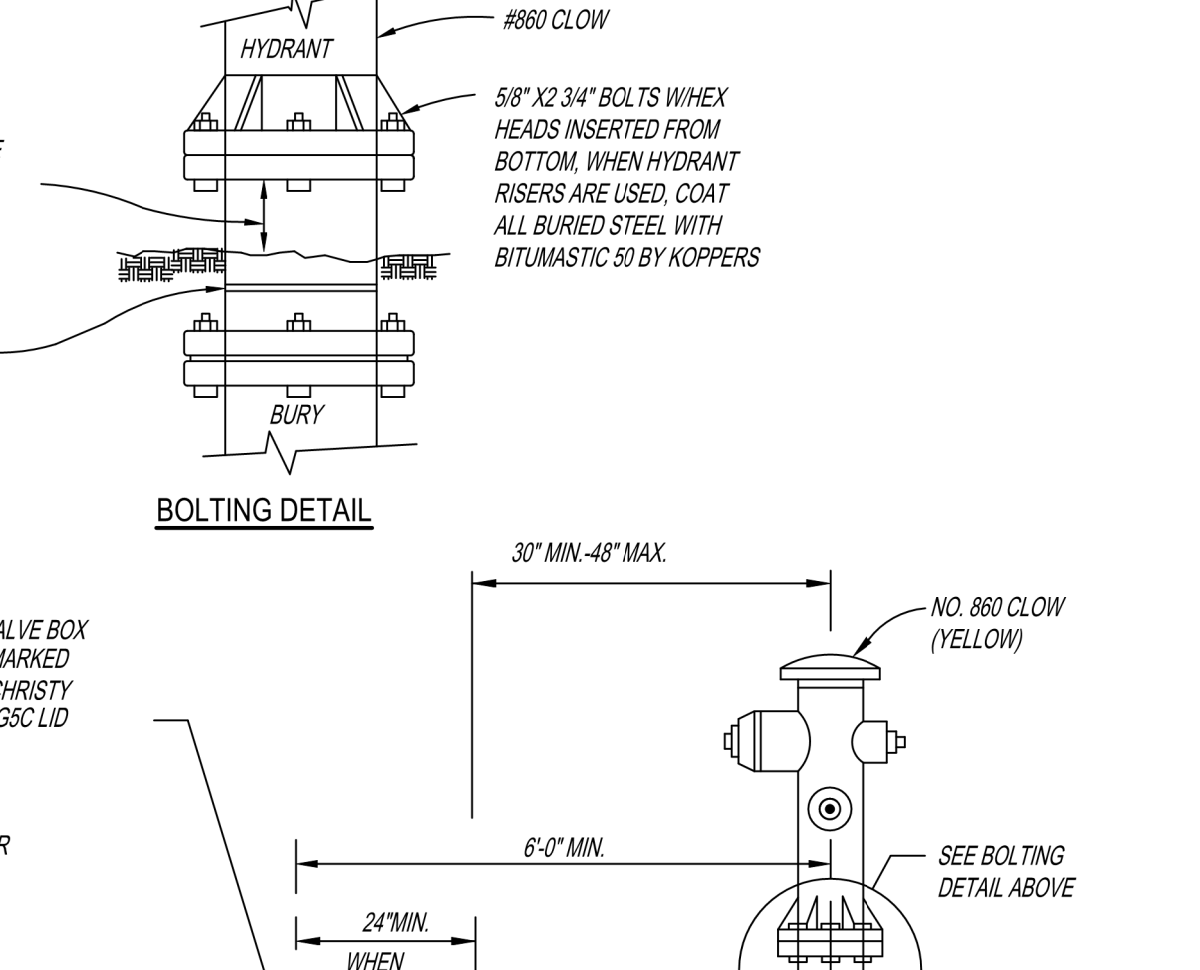
6\"/>



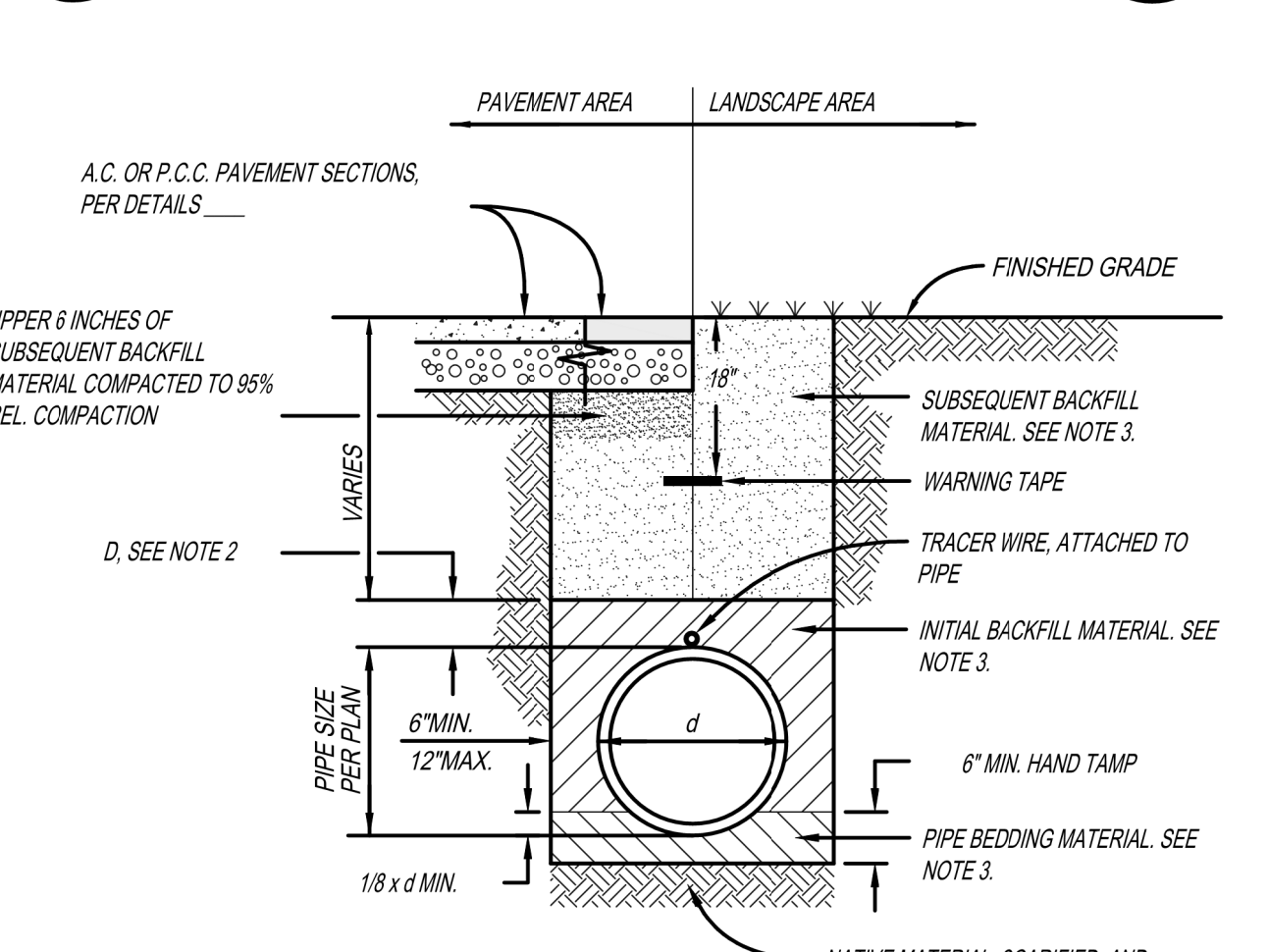
6\"/>



PER ADA STANDARD FOR ACCESSIBLE DESIGN SECTION 4.29.2 DETECTABLE WARNING SURFACE



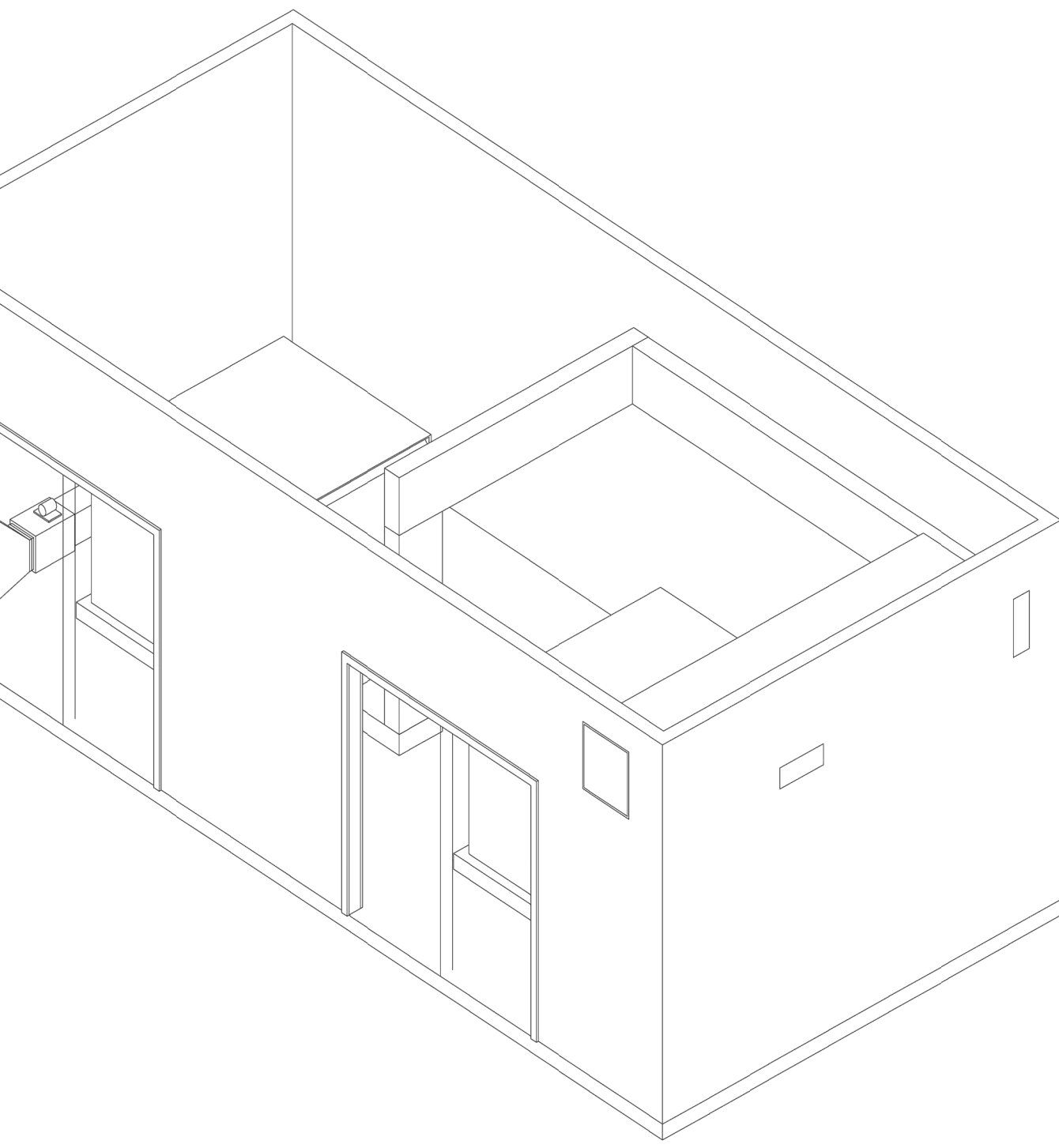
PRIVATE FIRE HYDRANT ASSEMBLY DETAIL (OFF PODIUM)



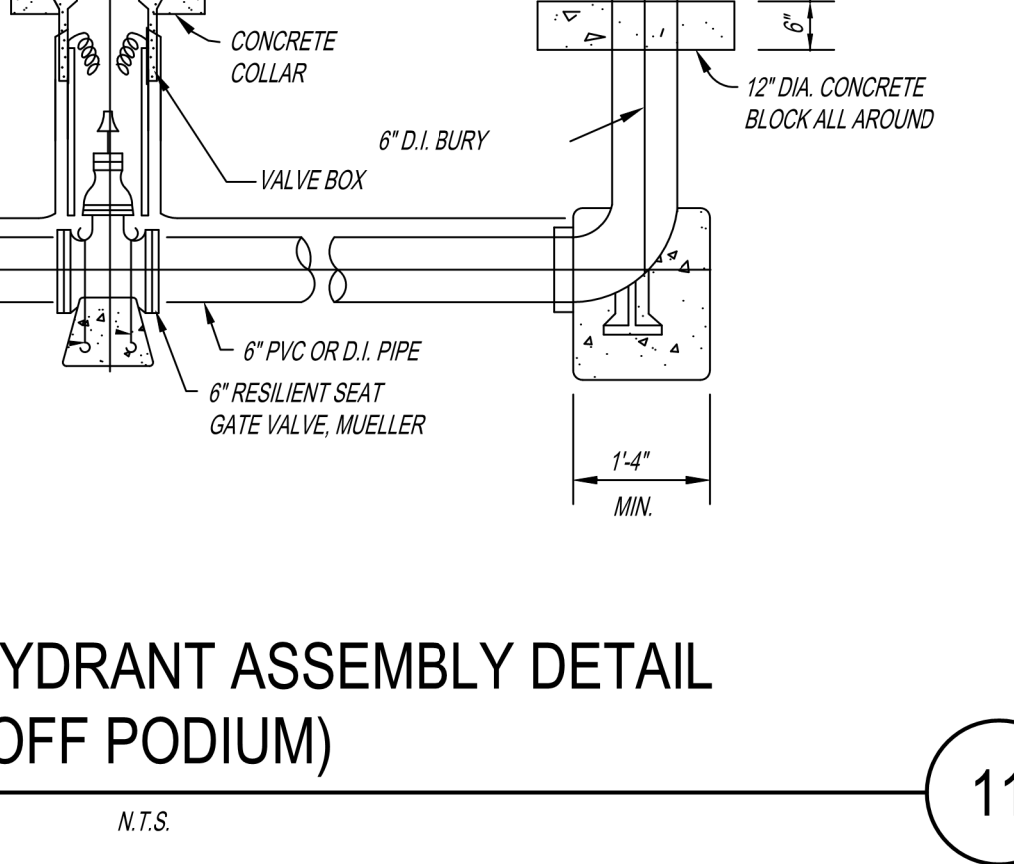
TRENCH DETAIL

SIZE	A	B	C	D
2"	12 1/2"	28 3/4"	24 3/4"	22 1/2"
4"	14"	37 7/8"	28 3/4"	25 1/2"
6"	16"	32 1/2"	32 1/2"	31 1/2"
8"	18 1/2"	37 1/2"	38 3/8"	37 3/4"
10"	21"	42 1/2"	43 3/4"	41"

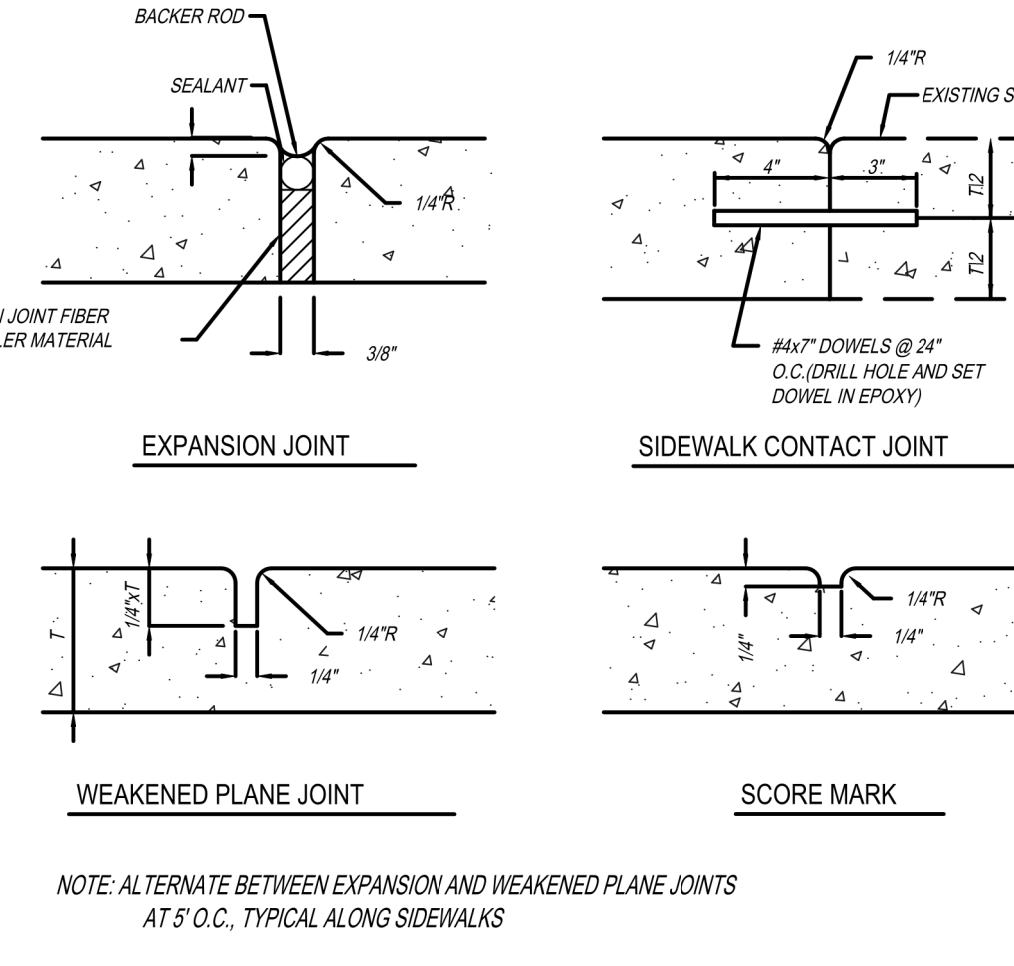
TABLE DIMENSIONS



3D VAULT VIEW - 2 XFMR



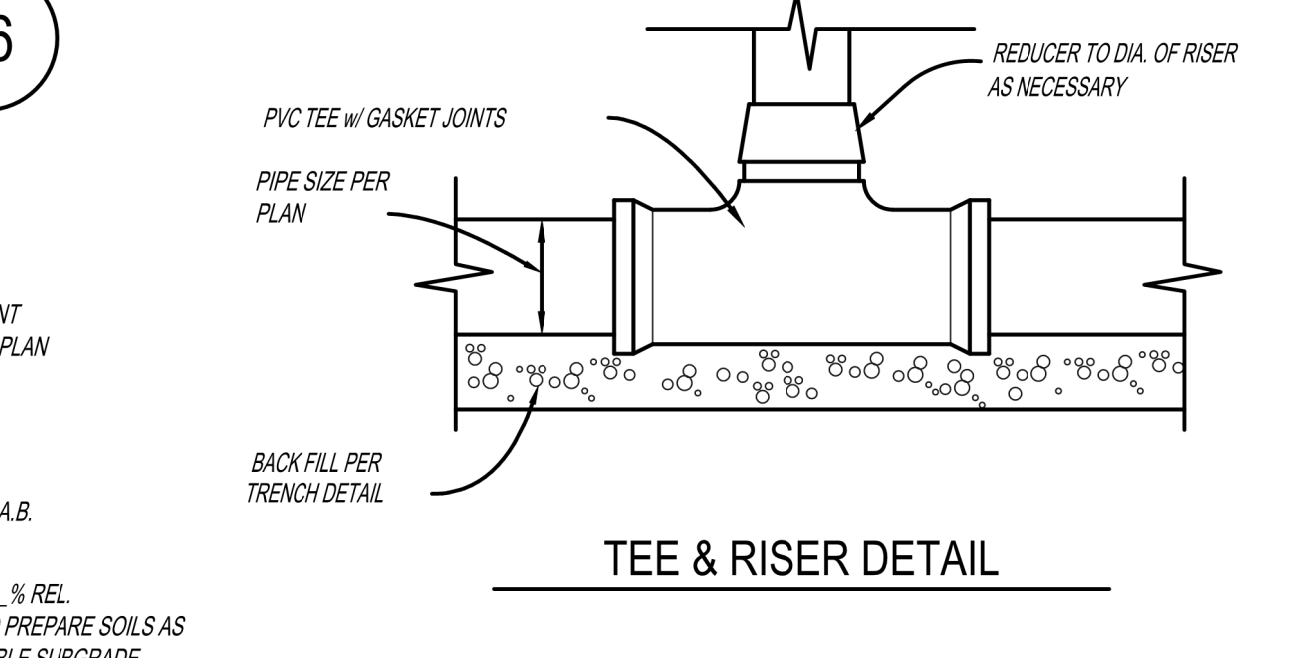
TYPICAL CONCRETE DETAILS



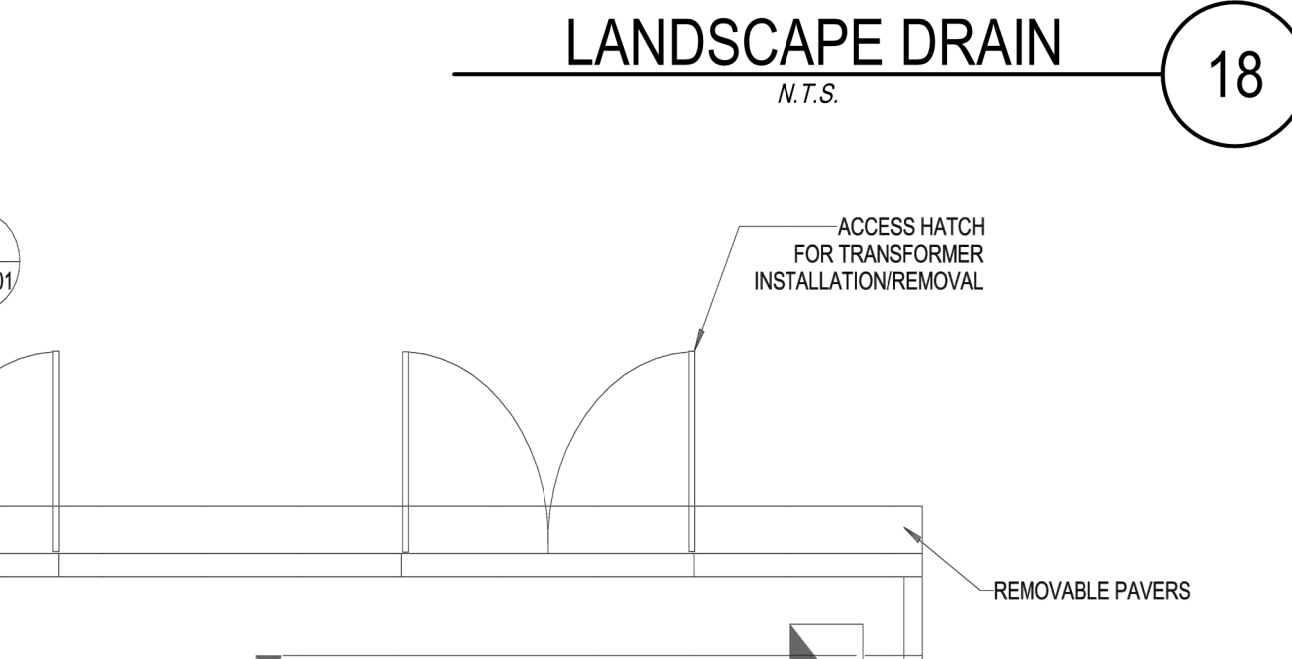
VALLEY GUTTER

	COMPACTION REQUIREMENTS				
	TRENCH SAND	TRENCH GRAVEL	APPROVED NATIVE	IMPORTED FILL	CLASS II AGGREGATE BASE
SUBSEQUENT BACKFILL MATERIAL (UNDER PAVEMENT)	N/A	N/A	XX% (85%)	XX% (85%)	XX% (85%)
SUBSEQUENT BACKFILL MATERIAL (ON LANDSCAPE)	N/A	N/A	XX% (85%)	XX% (85%)	XX% (85%)
INITIAL BACKFILL MATERIAL	XX% (85%)	XX% (85%)	N/A	N/A	N/A
BEDDING MATERIAL	XX% (85%)	XX% (85%)	N/A	N/A	N/A

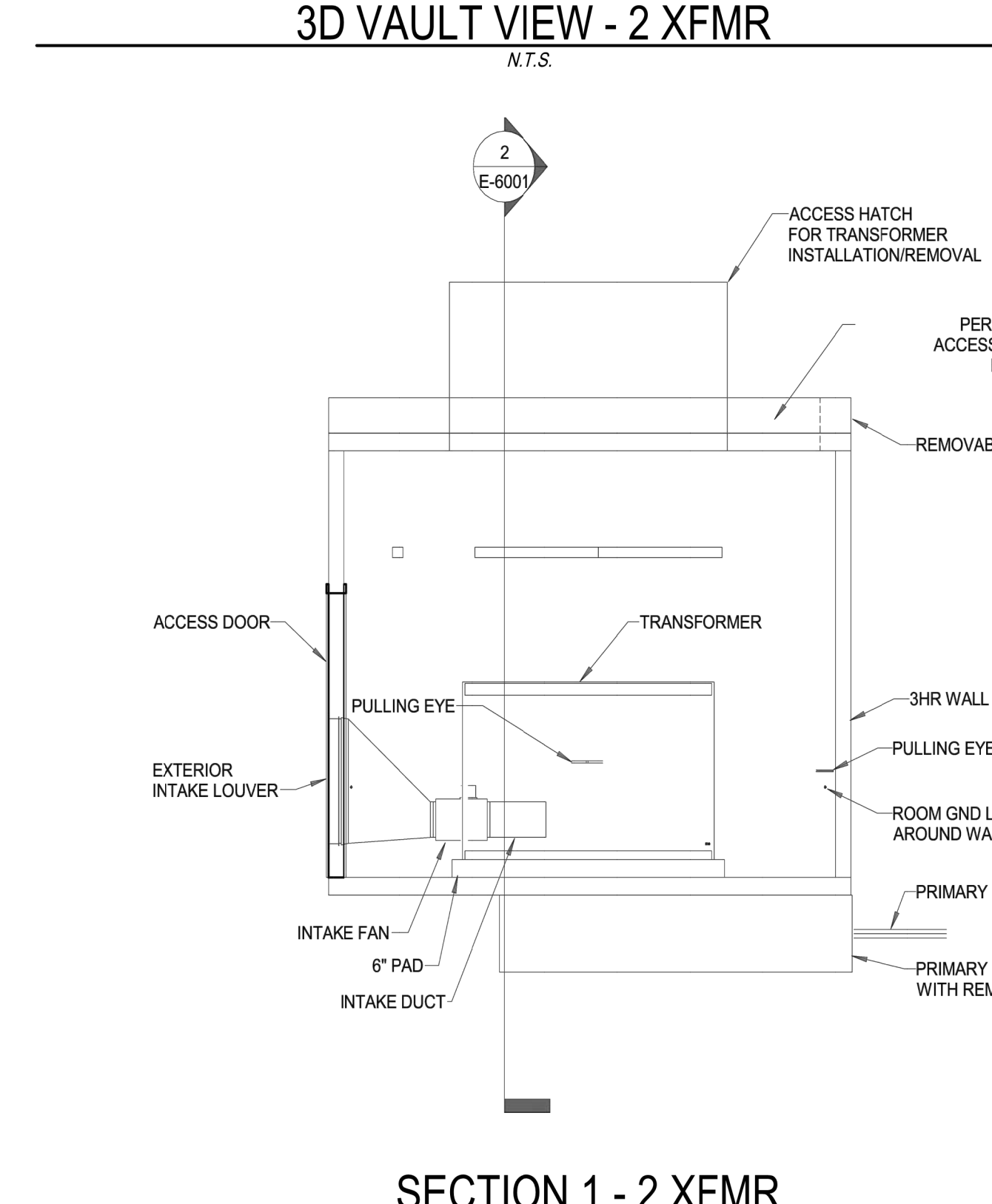
GRATE & RISER DETAIL



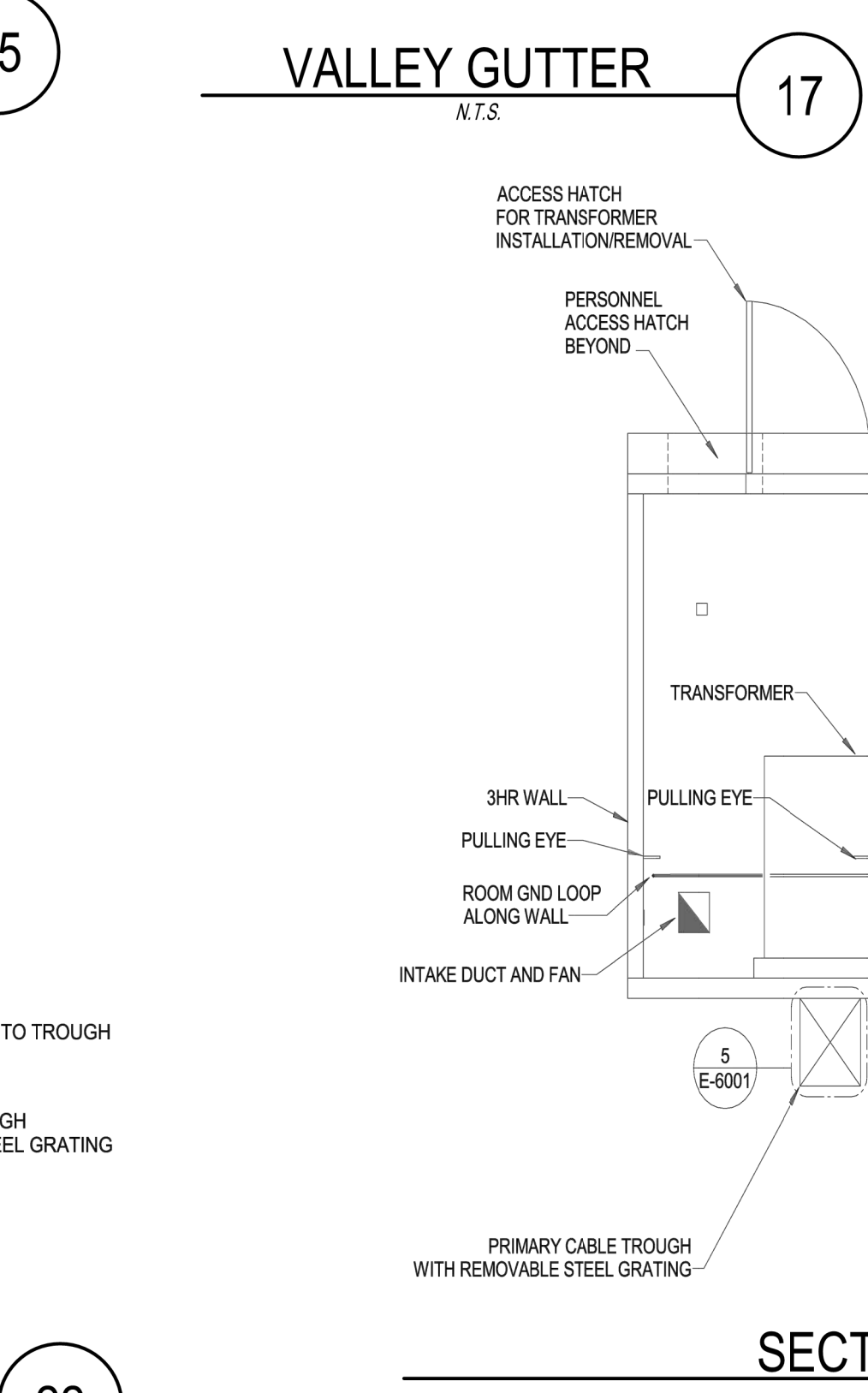
TEE & RISER DETAIL



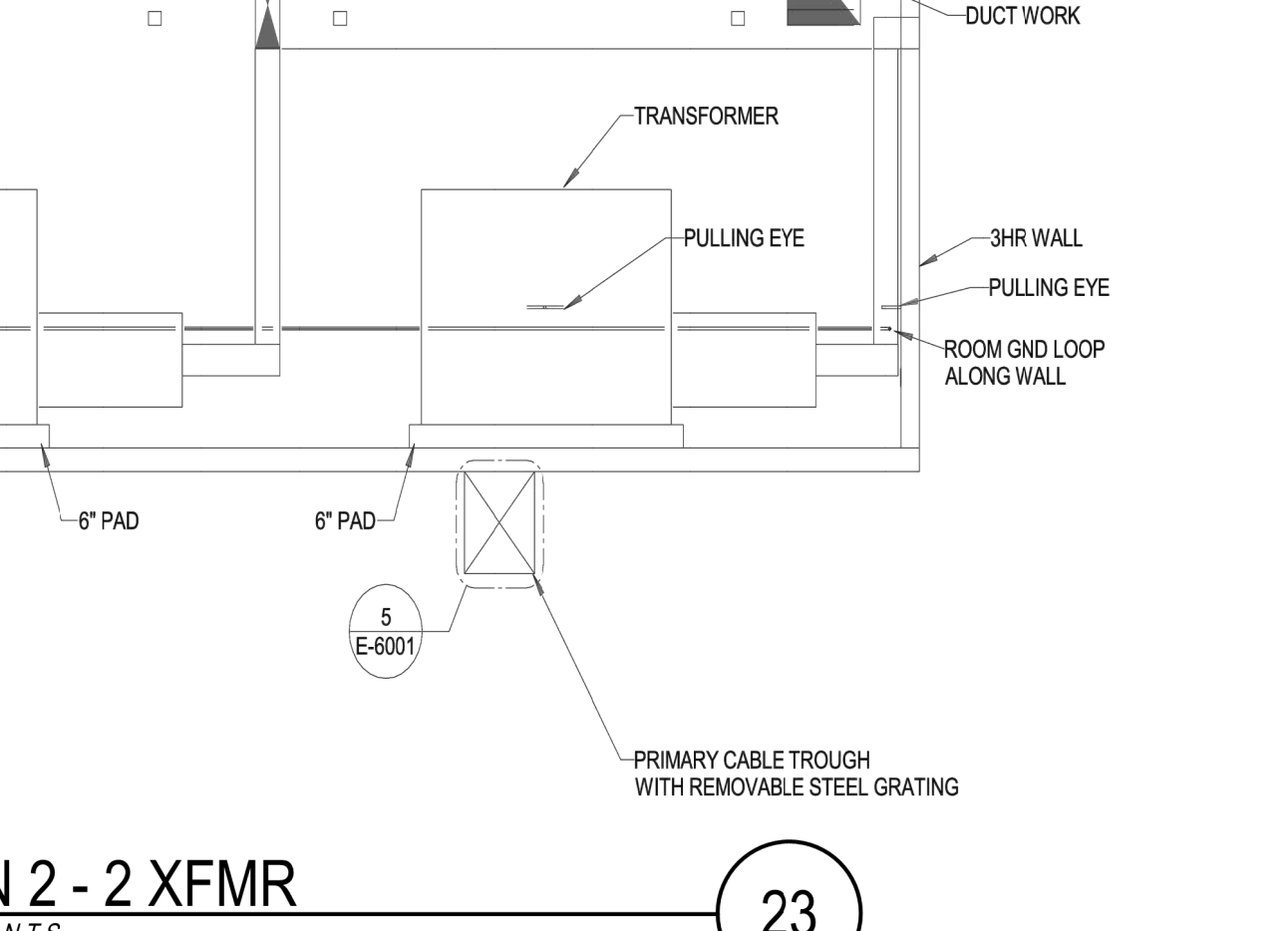
LANDSCAPE DRAIN



SECTION 1 - 2 XFMR



SECTION 2 - 2 XFMR



TYPICAL SITE DETAILS

VALLCO TOWN CENTER

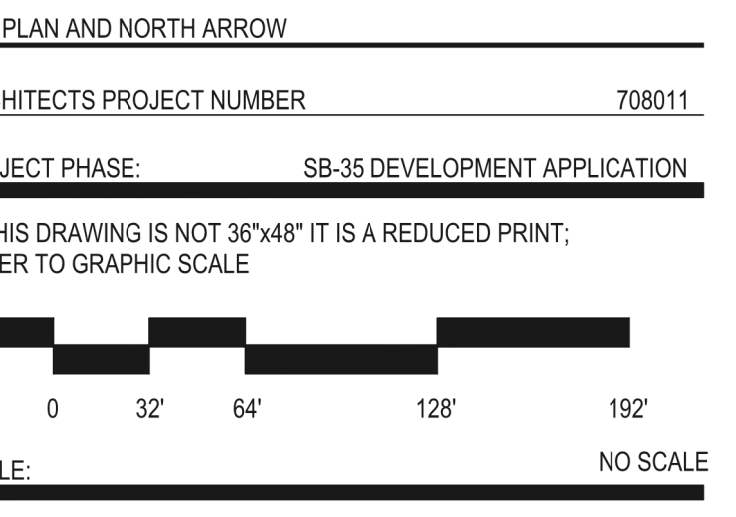
OWNER - VALLCO PROPERTY OWNER LLC
 965 PAGE MILL ROAD, PALO ALTO, CA 94304
 T. 650-344-1500
 ARCHITECTURE - RAFAEL VINYOL ARCHITECTS
 50 VANDAM STREET, NEW YORK, NY 10013
 T. 212-924-5000
 LANDSCAPE ARCHITECTURE - OLIN PARTNERSHIP LTD.
 193 N. INDEPENDENCE MALL, W. SUITE 1102, PHILADELPHIA, PA 19106
 T. 215-440-0000
 CIVIL - SANDUS CIVIL ENGINEERS SURVEYORS PLANNERS, INC.
 1705 S. WINCHESTER BLVD., SUITE 200, CAMPBELL, CA 95008
 T. 408-627-7000
 TRANSPORTATION ENGINEERING - ARUP NORTH AMERICA, LTD.
 880 MISSION STREET, SUITE 700 SAN FRANCISCO CA 94105
 T. 415-957-9445
 LIGHTING - ONE LUX STUDIO
 158 WEST 29TH STREET, 10TH FLOOR, NEW YORK, NY 10001
 T. 212-301-5750
 SIGNAGE - EX-IT
 1817 JFK BLVD, SUITE 1865, PHILADELPHIA, PA 19103
 T. 215-561-1050
 PARKING ENGINEERING - WATRY DESIGN, INC.
 2096 GATEWAY PLACE, SUITE 550, SAN JOSE, CA 95110
 T. 408-392-7000
 WASTE MANAGEMENT - CH2M HILL INTERNATIONAL
 535 NORTH BRAN BLVD, STE 710 GLENDALE, CA 91203
 T. 626-441-7700

NOT FOR CONSTRUCTION

DISCLAIMER
 THE ARCHITECT/ENGINEER SHALL HAVE NO RESPONSIBILITY FOR ANY LIABILITY, LOSS, COST, DAMAGE OR EXPENSE ARISING FROM OR RELATING TO ANY USE OF THIS DOCUMENT FOR ANY PURPOSE OTHER THAN THAT INTENDED FOR THIS PROJECT. THIS DOCUMENT IS TO BE CONSIDERED IN CONJUNCTION WITH ALL RELATED DOCUMENTATION. ANY DISCREPANCIES IDENTIFIED IN THIS DOCUMENT MUST BE REPORTED IMMEDIATELY TO THE ARCHITECT BEFORE PROCEEDING. CONTRACTORS MUST VERIFY ALL DIMENSIONS PRIOR TO PROCEEDING WITH ANY WORK. ONLY FOUR DIMENSIONS ARE TO BE USED FOR VERIFICATION.

SB-35 DEVELOPMENT APPLICATION

REV	DESCRIPTION	DATE
REV.0	SB-35 DEVELOPMENT APPLICATION	03/27/2018
REV.1	SB-35 APPLICATION REVISIONS	06/02/2018
REV.2	SB-35 APPLICATION CORRECTIVE SET	09/15/2018



PROJECT PHASE - SB-35 DEVELOPMENT APPLICATION
 IF THIS DRAWING IS NOT 36" X 48" IT IS A REDUCED PRINT. REFER TO GRAPHIC SCALE.
 SCALE: NO SCALE

TYPICAL SITE DETAILS