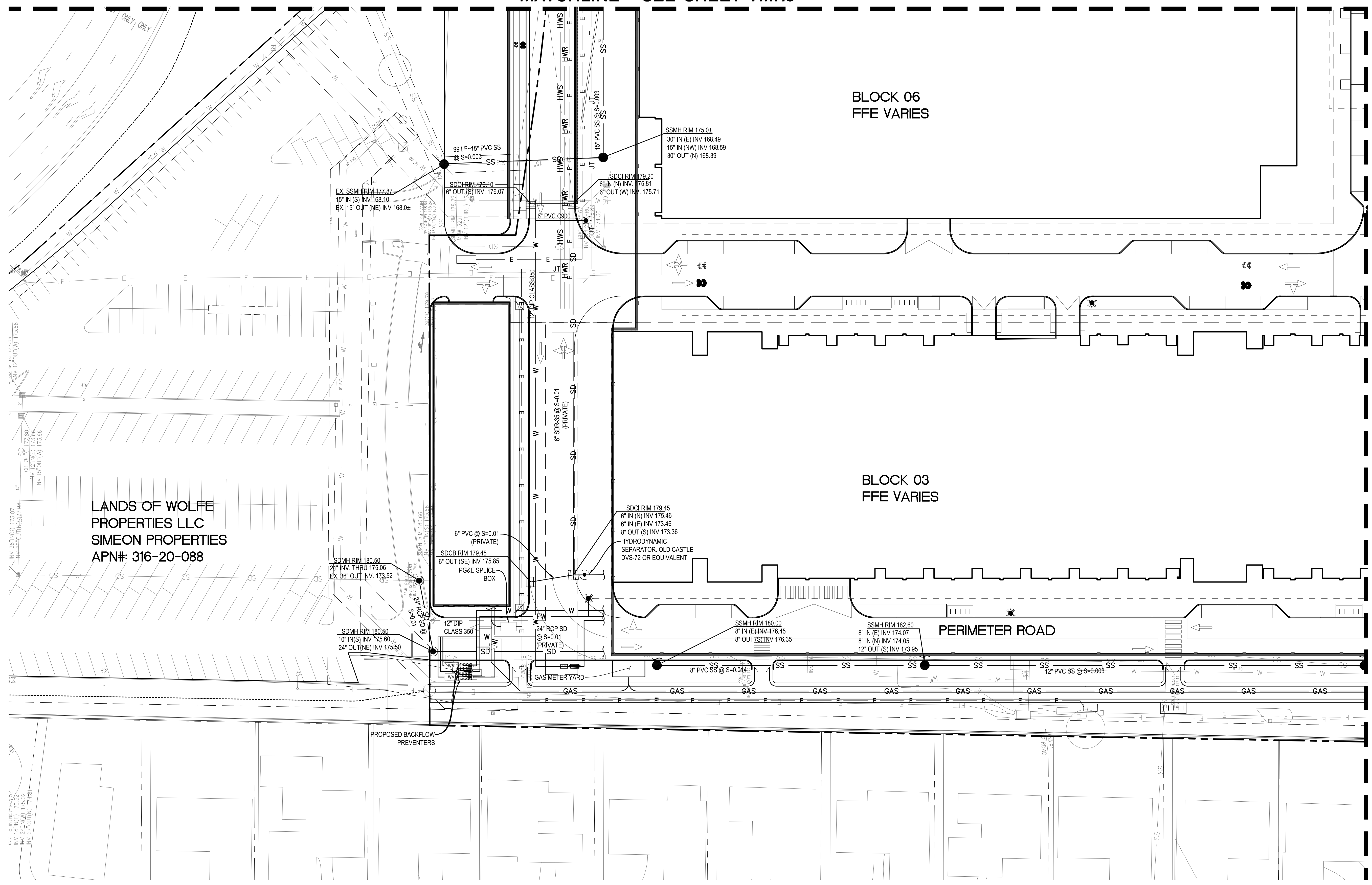


MATCHLINE - SEE SHEET TM7.3



LEGEND

- PROPERTY LINE
- ADJACENT PROPERTY LINE
- STREET CENTERLINE
- EASEMENT LINE
- FLOW ARROW
- OVERLAND RELEASE
- WATER METER
- BACKFLOW PREVENTER
- SD STORM DRAIN LINE
- SS SANITARY SEWER LINE
- W WATER LINE
- JT JOINT TRENCH LINE
- COM COMMUNICATION LINE
- UNDERGROUND GARAGE LIMIT
- ELECTRICAL VAULT
- UNDERGROUND PAD MOUNTED TRANSFORMER

- UTILITY NOTE**
- TRANSFORMERS TO BE LOCATED BELOW GROUND IN VAULTS.
 - FINAL LOCATIONS, SIZES, NUMBER AND OTHER DETAILS TO BE DETERMINED AT A LATER DATE IN CONSULTATION WITH THE CITY'S PUBLIC WORKS DEPARTMENT AND OTHER PERMITTING AUTHORITIES SUCH AS PG&E.
 - ALL STORM DRAINAGE THAT FALLS ON THE GREEN ROOF AND OVER PODIUM WILL BE ROUTED THROUGH THE GARAGE TO THE PROPOSED CISTERNS. THE SIZE AND NUMBER OF CISTERNS SHOWN ON THE PLANS IS SCHEMATIC IN NATURE AND WILL BE ADJUSTED AS NECESSARY IN CONSULTATION WITH THE PLUMBING ENGINEER.
 - EVERY DOMESTIC WATER SERVICES WILL HAVE AN INDIVIDUAL SUBMETERS LOCATED WITHIN THE PODIUM FOOTPRINT. EXACT LOCATIONS LOCATIONS WILL BE CONFIRMED IN CONSULTATION WITH THE PLUMBING ENGINEER.

NO PART OF THIS DOCUMENT MAY BE REPRODUCED IN ANY FORM INCLUDING PHOTOCOPY, RECORDING OR ANY INFORMATION RETRIEVABLE AND STORAGE SYSTEM, WITHOUT PERMISSION IN WRITING FROM SANDIS.

LANDS OF WOLFE PROPERTIES LLC
SIMEON PROPERTIES
APN#: 316-20-088

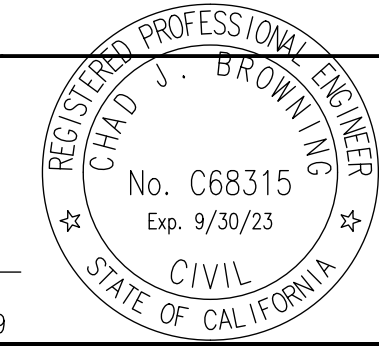
BLOCK 06
FFE VARIES

BLOCK 03
FFE VARIES

MATCHLINE - SEE SHEET TM7.7

SANDIS CIVIL ENGINEERS SURVEYORS PLANNERS
1700 S. Winchester Blvd, Suite 200, Campbell, CA 95008 | P. 408.636.0900 | F. 408.636.0999 | www.sandis.net
SILICON VALLEY TRI-VALLEY CENTRAL VALLEY SACRAMENTO EAST BAY/ SF

DATE: 03/23/2022 DATE: MARCH 23, 2022
SCALE: 1"=30'
DRAWN BY: SP
APPROVED BY: ND
DRAWING NO.: 215028
CHAD J. BROWNING
R.C.E. NO. 68315, EXPIRES 9-30-19



| No. | REVISION/ISSUE | DATE | BY |
|-------|-------------------------------|------------|----|
| REV-0 | SB-35 DEVELOPMENT APPLICATION | 03/27/2018 | ND |
| REV-1 | SB-35 APPLICATION REVISIONS | 08/06/2018 | ND |
| REV-2 | SB-35 APPLICATION CONFORM SET | 09/15/2018 | ND |
| REV-3 | SB-35 MODIFICATION DOCUMENTS | 03/23/2022 | ND |

UTILITY PLAN

TENTATIVE SUBDIVISION MAP
VALLCO TOWN CENTER
CUPERTINO CALIFORNIA

SHEET
TM7.6
OF 73 SHEETS
Copyright © 2018 by Sandis