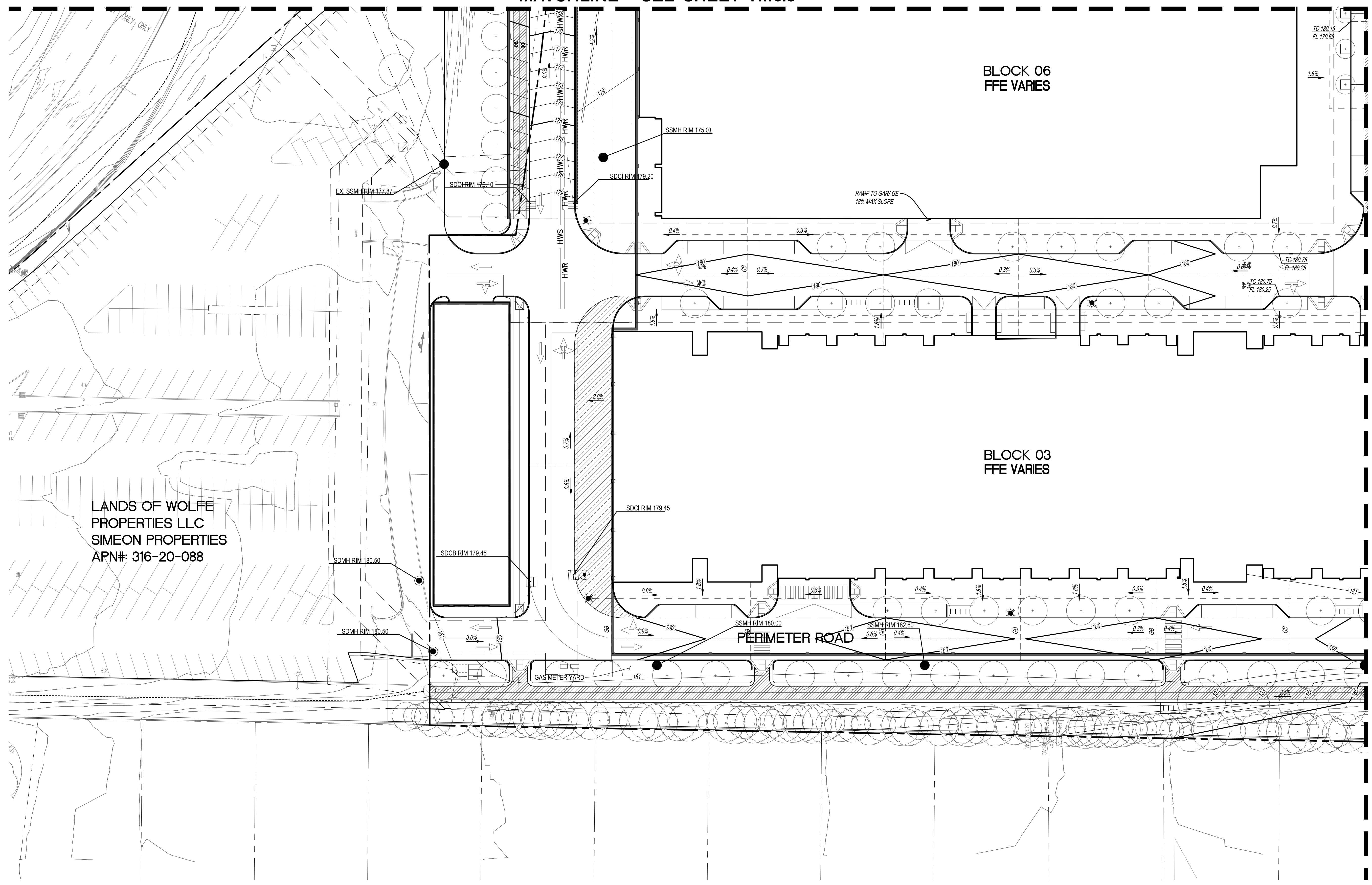


MATCHLINE - SEE SHEET TM6.3



- LEGEND**
- PROPERTY LINE
 - - - ADJACENT PROPERTY LINE
 - STREET CENTERLINE
 - - - EASEMENT LINE
 - FLOW ARROW
 - OVERLAND RELEASE
 - STORM DRAIN CATCH BASIN
 - CONTOUR LINE
 - 181 UNDERGROUND GARAGE LIMIT

- GRADING NOTES:**
1. GRADING IS FOR SCHEMATIC DESIGN ONLY. AREAS WHICH SHOW 0% SLOPE OR CROSS SLOPE WILL BE FINE GRADED TO HAVE PROPER DRAINAGE. SLOPES ARE INTENDED TO SHOW OVERALL GRADING INTENT ONLY.
 2. NATURAL GRADE IS BEING ESTABLISHED BY THIS TENTATIVE MAP.

EARTHWORK QUANTITY

CUT = 1,510,000 CUBIC YARDS
 FILL = 0 CUBIC YARDS
 NET CUT = 1,510,000 CUBIC YARDS

LANDS OF WOLFE
 PROPERTIES LLC
 SIMEON PROPERTIES
 APN#: 316-20-088

MATCHLINE - SEE SHEET TM6.7

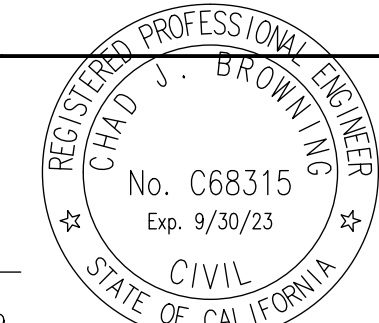
NO PART OF THIS DOCUMENT MAY BE REPRODUCED IN ANY FORM INCLUDING PHOTOCOPY, RECORDING OR ANY INFORMATION RETRIEVABLE AND STORAGE SYSTEM, WITHOUT PERMISSION IN WRITING FROM SANDIS.

SANDIS
 CIVIL ENGINEERS
 SURVEYORS
 PLANNERS

1700 S. Winchester Blvd, Suite 200, Campbell, CA 95008 | P. 408.636.0900 | F. 408.636.0999 | www.sandis.net

SILICON VALLEY TRI-VALLEY CENTRAL VALLEY SACRAMENTO EAST BAY/SF

DATE: 03/23/2022	DATE: MARCH 23, 2022
SCALE: 1"=30'	
DRAWN BY: SP	<i>Chad J. Browning</i>
APPROVED BY: ND	
DRAWING NO.: 215028	CHAD J. BROWNING R.C.E. NO. 68315, EXPIRES 9-30-19



No.	REVISION/ISSUE	DATE	BY
REV-0	SB-35 DEVELOPMENT APPLICATION	03/27/2018	ND
REV-1	SB-35 APPLICATION REVISIONS	08/06/2018	ND
REV-2	SB-35 APPLICATION CONFORM SET	09/15/2018	ND
REV-3	SB-35 MODIFICATION DOCUMENTS	03/23/2022	ND

GRADING AND DRAINAGE PLAN

TENTATIVE SUBDIVISION MAP
 VALLCO TOWN CENTER
 CUPERTINO CALIFORNIA

SHEET
TM6.6
 OF 73 SHEETS