

MATCHLINE - SEE SHEET TM6.2

BLOCK 09
FF VARIES

BLOCK 07
FFE VARIES

ROSEBOWL
APN#: 316-20-037
316-20-038

VALLCO PARKWAY

WOLFE ROAD

MATCHLINE - SEE SHEET TM6.7

LEGEND

- PROPERTY LINE
- ADJACENT PROPERTY LINE
- STREET CENTERLINE
- EASEMENT LINE
- FLOW ARROW
- OVERLAND RELEASE
- STORM DRAIN CATCH BASIN
- CONTOUR LINE
- UNDERGROUND GARAGE LIMIT

- GRADING NOTES:**
- GRADING IS FOR SCHEMATIC DESIGN ONLY. AREAS WHICH SHOW 0% SLOPE OR CROSS SLOPE WILL BE FINE GRADED TO HAVE PROPER DRAINAGE. SLOPES ARE INTENDED TO SHOW OVERALL GRADING INTENT ONLY.
 - NATURAL GRADE IS BEING ESTABLISHED BY THIS TENTATIVE MAP.

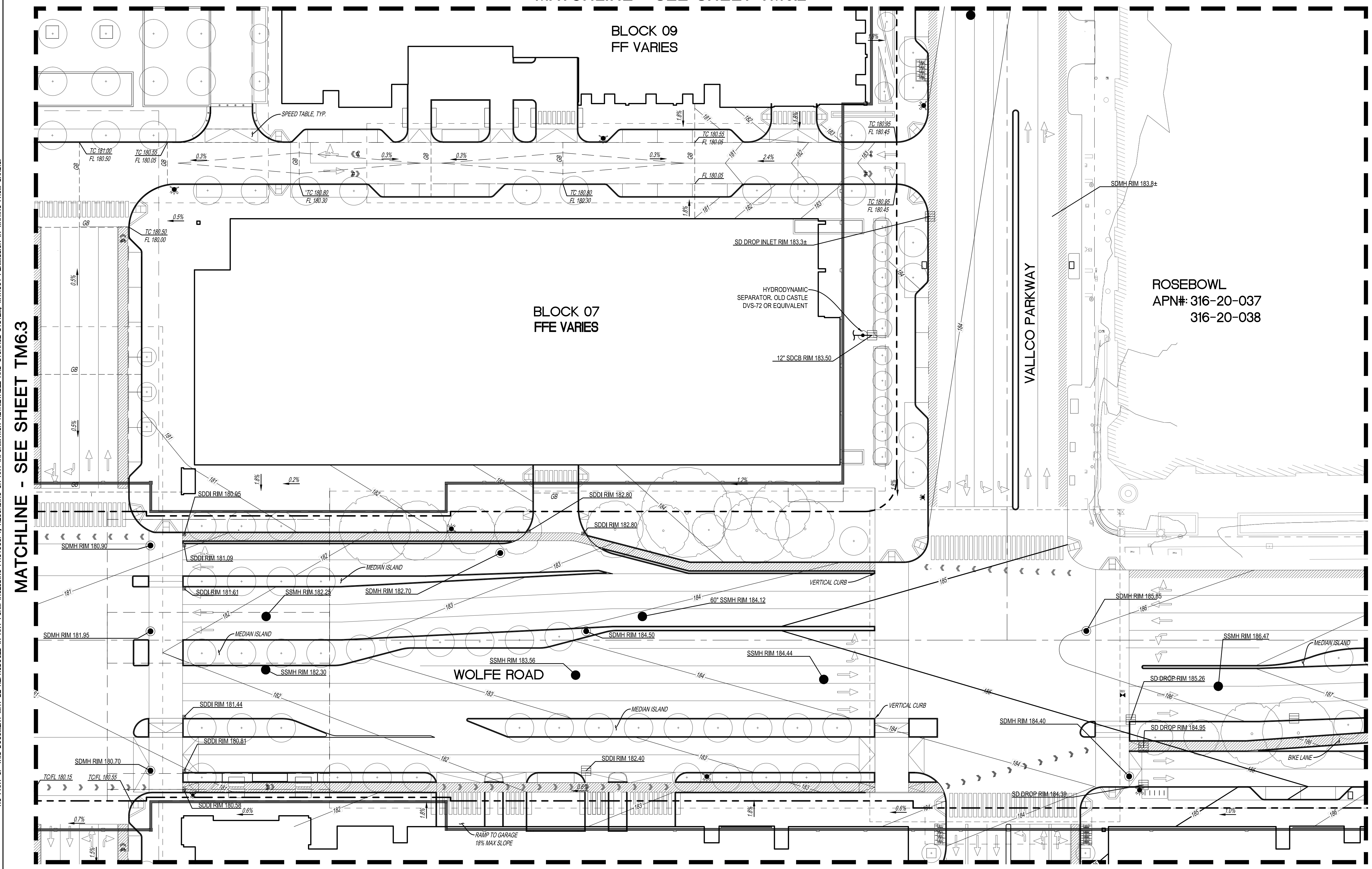
EARTHWORK QUANTITY

CUT = 1,510,000 CUBIC YARDS
 FILL = 0 CUBIC YARDS
 NET CUT = 1,510,000 CUBIC YARDS

NO PART OF THIS DOCUMENT MAY BE REPRODUCED IN ANY FORM INCLUDING PHOTOCOPY, RECORDING OR ANY INFORMATION RETRIEVABLE AND STORAGE SYSTEM, WITHOUT PERMISSION IN WRITING FROM SANDIS.

MATCHLINE - SEE SHEET TM6.3

MATCHLINE - SEE SHEET TM6.5



SANDIS CIVIL ENGINEERS SURVEYORS PLANNERS

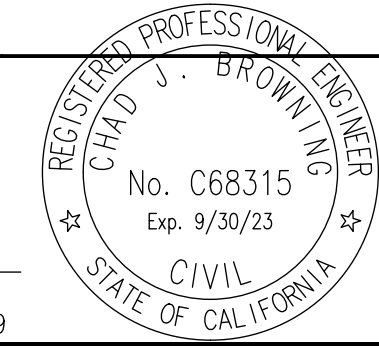
1700 S. Winchester Blvd, Suite 200, Campbell, CA 95008 | P. 408.636.0900 | F. 408.636.0999 | www.sandis.net

SILICON VALLEY TRI-VALLEY CENTRAL VALLEY SACRAMENTO EAST BAY/SF

DATE: 03/23/2022
 SCALE: 1"=30'
 DRAWN BY: SP
 APPROVED BY: ND
 DRAWING NO.: 215028

DATE: MARCH 23, 2022

CHAD J. BROWNING
 R.C.E. NO. 68315, EXPIRES 9-30-19



| No. | REVISION/ISSUE | DATE | BY |
|-------|-------------------------------|------------|----|
| REV-0 | SB-35 DEVELOPMENT APPLICATION | 03/27/2018 | ND |
| REV-1 | SB-35 APPLICATION REVISIONS | 08/06/2018 | ND |
| REV-2 | SB-35 APPLICATION CONFORM SET | 09/15/2018 | ND |
| REV-3 | SB-35 MODIFICATION DOCUMENTS | 03/23/2022 | ND |

TENTATIVE SUBDIVISION MAP
 VALLCO TOWN CENTER
 CUPERTINO CALIFORNIA

SHEET
TM6.4
 OF 73 SHEETS
 Copyright © 2018 by Sandis