

MATCHLINE - SEE SHEET TM6.1

BLOCK 10
FF VARIES

HYATT HOTEL
LANDS OF CUPERTINO
PROPERTY LI LLC
APN# 316-20-092

BLOCK 08
FFE VARIES

LEGEND

- PROPERTY LINE
- - - ADJACENT PROPERTY LINE
- STREET CENTERLINE
- - - EASEMENT LINE
- FLOW ARROW
- ↘ OVERLAND RELEASE
- ▭ STORM DRAIN CATCH BASIN
- CONTOUR LINE
- 181 UNDERGROUND GARAGE LIMIT

GRADING NOTES:

1. GRADING IS FOR SCHEMATIC DESIGN ONLY. AREAS WHICH SHOW 0% SLOPE OR CROSS SLOPE WILL BE FINE GRADED TO HAVE PROPER DRAINAGE. SLOPES ARE INTENDED TO SHOW OVERALL GRADING INTENT ONLY.
2. NATURAL GRADE IS BEING ESTABLISHED BY THIS TENTATIVE MAP.

EARTHWORK QUANTITY

CUT = 1,510,000 CUBIC YARDS
FILL = 0 CUBIC YARDS
NET CUT = 1,510,000 CUBIC YARDS

MATCHLINE - SEE SHEET TM6.4

MATCHLINE - SEE SHEET TM6.6

NO PART OF THIS DOCUMENT MAY BE REPRODUCED IN ANY FORM INCLUDING PHOTOCOPY, RECORDING OR ANY INFORMATION RETRIEVABLE AND STORAGE SYSTEM, WITHOUT PERMISSION IN WRITING FROM SANDIS.

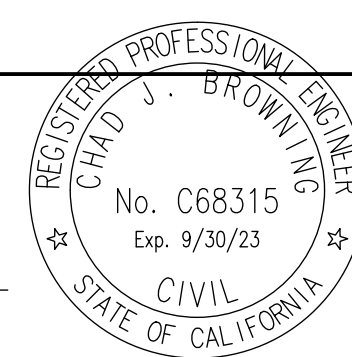


**CIVIL ENGINEERS
SURVEYORS
PLANNERS**

1700 S. Winchester Blvd, Suite 200, Campbell, CA 95008 | P. 408.636.0900 | F. 408.636.0999 | www.sandis.net
SILICON VALLEY TRI-VALLEY CENTRAL VALLEY SACRAMENTO EAST BAY/SF

DATE: 03/23/2022
SCALE: 1"=30'
DRAWN BY: SP
APPROVED BY: ND
DRAWING NO.: 215028

DATE: MARCH 23, 2022
CHAD J. BROWNING
R.C.E. NO. 68315, EXPIRES 9-30-19



No.	REVISION/ISSUE	DATE	BY
REV-0	SB-35 DEVELOPMENT APPLICATION	03/27/2018	ND
REV-1	SB-35 APPLICATION REVISIONS	08/06/2018	ND
REV-2	SB-35 APPLICATION CONFORM SET	09/15/2018	ND
REV-3	SB-35 MODIFICATION DOCUMENTS	03/23/2022	ND

GRADING AND DRAINAGE PLAN

TENTATIVE SUBDIVISION MAP
VALLCO TOWN CENTER
CUPERTINO CALIFORNIA

SHEET
TM6.3
OF 73 SHEETS
Copyright © 2018 by Sandis