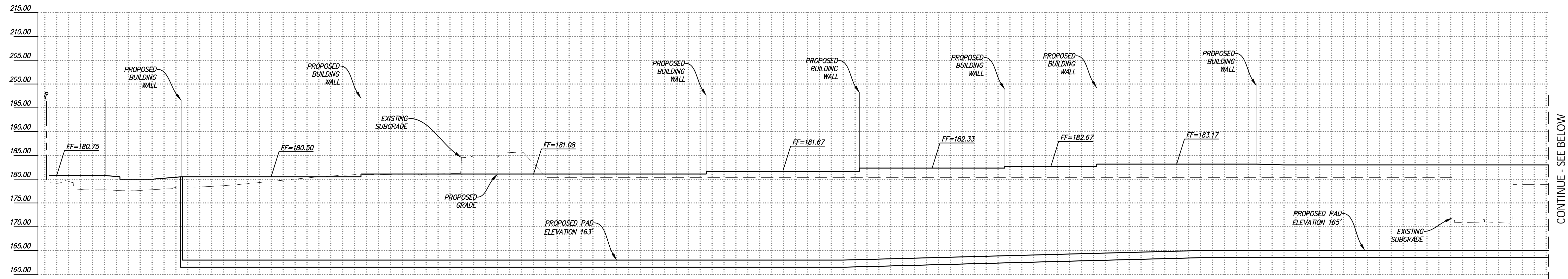
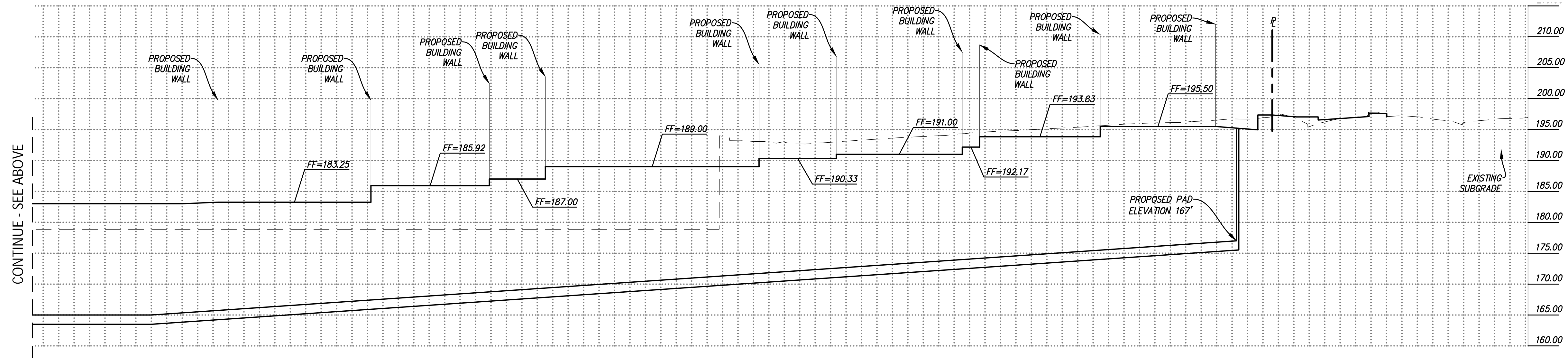


NO PART OF THIS DOCUMENT MAY BE REPRODUCED IN ANY FORM INCLUDING PHOTOCOPY, RECORDING OR ANY INFORMATION RETRIEVABLE AND STORAGE SYSTEM, WITHOUT PERMISSION IN WRITING FROM SANDIS.

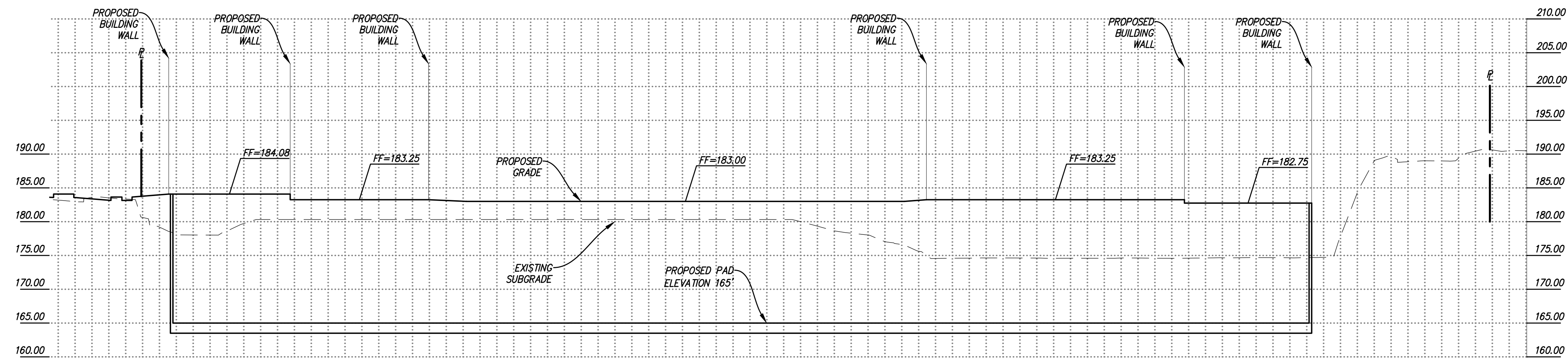


CONTINUE - SEE BELOW



CONTINUE - SEE ABOVE

**SECTION 3**  
**HORIZ. SCALE: 1" = 40'**  
**VERT. SCALE: 1" = 10'**



**SECTION 4**  
**HORIZ. SCALE: 1" = 40'**  
**VERT. SCALE: 1" = 10'**

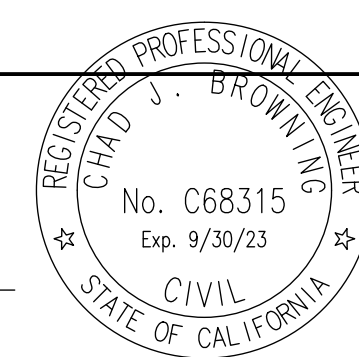
**SECTIONS**



**CIVIL ENGINEERS  
 SURVEYORS  
 PLANNERS**

1700 S. Winchester Blvd, Suite 200, Campbell, CA 95008 | P. 408.636.0900 | F. 408.636.0999 | www.sandis.net  
**SILICON VALLEY TRI-VALLEY CENTRAL VALLEY SACRAMENTO EAST BAY/SF**

DATE: 03/23/2022  
 SCALE: 1"=30'  
 DRAWN BY: SP  
 APPROVED BY: ND  
 DRAWING NO.: 215028  
 DATE: MARCH 23, 2022  
 CHAD J. BROWNING  
 R.C.E. NO. 68315, EXPIRES 9-30-19



No.	REVISION/ISSUE	DATE	BY
REV-0	SB-35 DEVELOPMENT APPLICATION	03/27/2018	ND
REV-1	SB-35 APPLICATION REVISIONS	08/06/2018	ND
REV-2	SB-35 APPLICATION CONFORM SET	09/15/2018	ND
REV-3	SB-35 MODIFICATION DOCUMENTS	03/23/2022	ND

**TENTATIVE SUBDIVISION MAP  
 VALLCO TOWN CENTER  
 CUPERTINO CALIFORNIA**

SHEET  
**TM6.12**  
 OF 73 SHEETS  
 Copyright © 2018 by Sandis