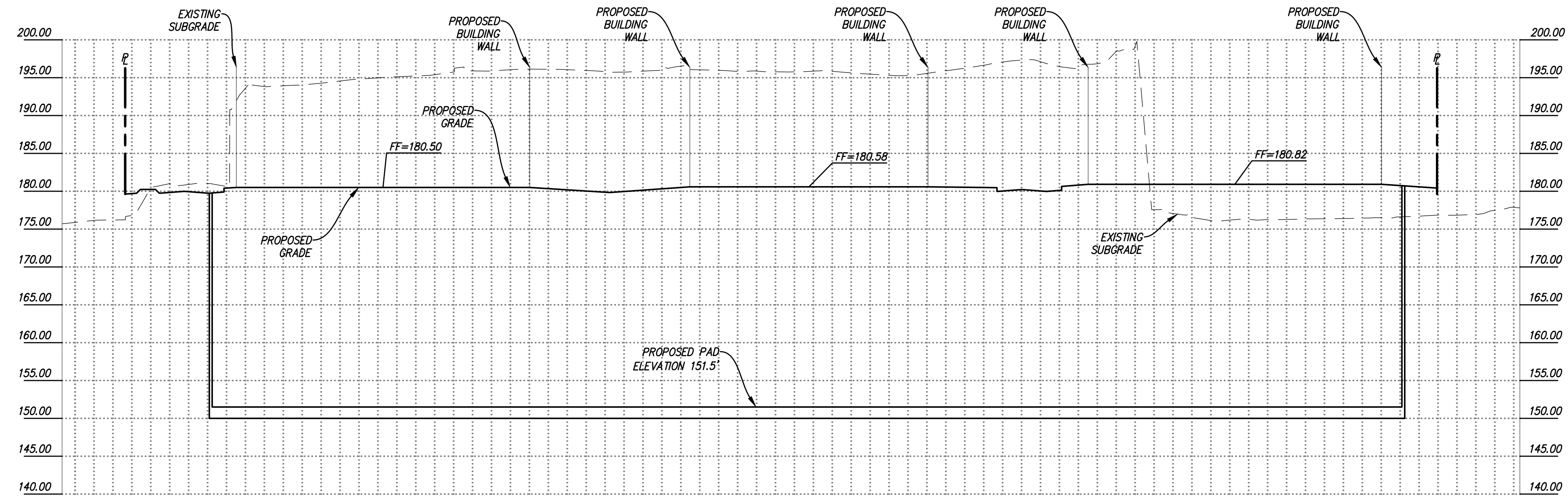
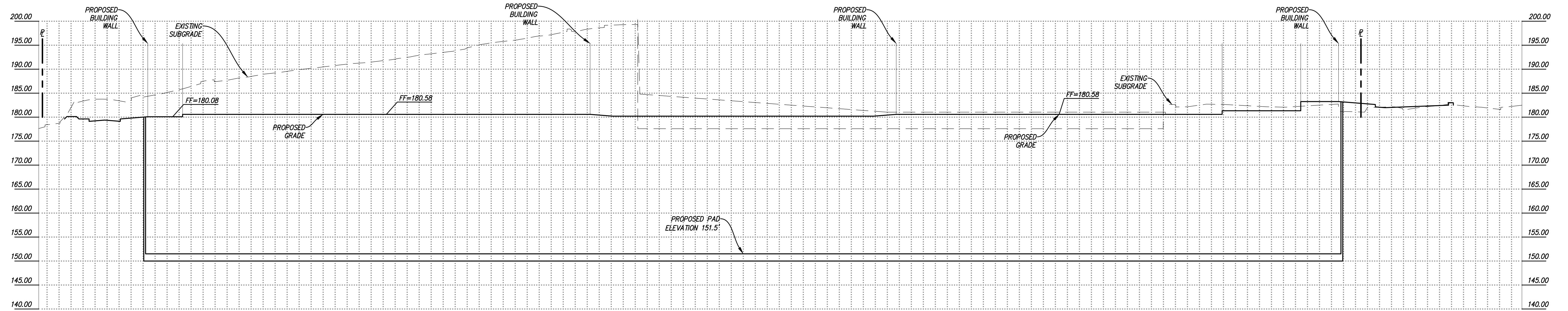


NO PART OF THIS DOCUMENT MAY BE REPRODUCED IN ANY FORM INCLUDING PHOTOCOPY, RECORDING OR ANY INFORMATION RETRIEVABLE AND STORAGE SYSTEM, WITHOUT PERMISSION IN WRITING FROM SANDIS.



SECTION 1
HORIZ. SCALE: 1" = 40'
VERT. SCALE: 1" = 10'



SECTION 2
HORIZ. SCALE: 1" = 40'
VERT. SCALE: 1" = 10'



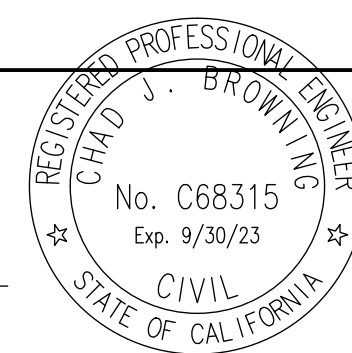
**CIVIL ENGINEERS
 SURVEYORS
 PLANNERS**

1700 S. Winchester Blvd, Suite 200, Campbell, CA 95008 | P. 408.636.0900 | F. 408.636.0999 | www.sandis.net
SILICON VALLEY TRI-VALLEY CENTRAL VALLEY SACRAMENTO EAST BAY/SF

DATE: 03/23/2022
 SCALE: NA
 DRAWN BY: SP
 APPROVED BY: ND
 DRAWING NO.: 215028

DATE: MARCH 23, 2022

 CHAD J. BROWNING
 R.C.E. NO. 68315, EXPIRES 9-30-19



No.	REVISION/ISSUE	DATE	BY
REV-0	SB-35 DEVELOPMENT APPLICATION	03/27/2018	ND
REV-1	SB-35 APPLICATION REVISIONS	08/06/2018	ND
REV-2	SB-35 APPLICATION CONFORM SET	09/15/2018	ND
REV-3	SB-35 MODIFICATION DOCUMENTS	03/23/2022	ND

SECTIONS

TENTATIVE SUBDIVISION MAP
 VALLCO TOWN CENTER
 CUPERTINO CALIFORNIA

SHEET
TM6.11
 OF 73 SHEETS
 Copyright © 2018 by Sandis