

MATCHLINE - SEE SHEET TM6.8

BLOCK 01
FF VARIES

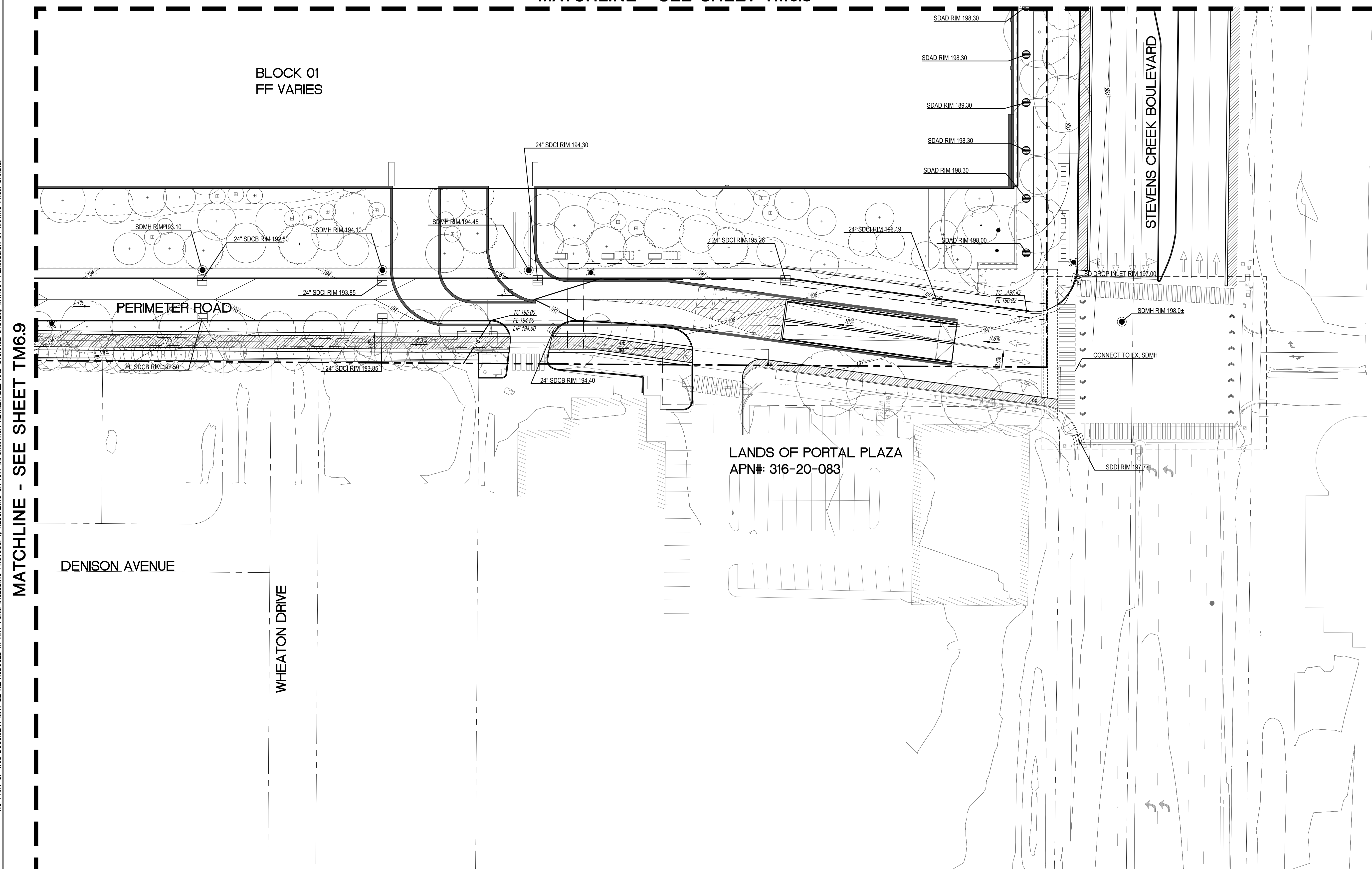
LEGEND

- PROPERTY LINE
- - - ADJACENT PROPERTY LINE
- STREET CENTERLINE
- - - EASEMENT LINE
- FLOW ARROW
- ⇄ OVERLAND RELEASE
- ⊠ STORM DRAIN CATCH BASIN
- CONTOUR LINE
- 181 UNDERGROUND GARAGE LIMIT

- GRADING NOTES:**
- GRADING IS FOR SCHEMATIC DESIGN ONLY. AREAS WHICH SHOW 0% SLOPE OR CROSS SLOPE WILL BE FINE GRADED TO HAVE PROPER DRAINAGE. SLOPES ARE INTENDED TO SHOW OVERALL GRADING INTENT ONLY.
 - NATURAL GRADE IS BEING ESTABLISHED BY THIS TENTATIVE MAP.

EARTHWORK QUANTITY

CUT = 1,510,000 CUBIC YARDS
 FILL = 0 CUBIC YARDS
 NET CUT = 1,510,000 CUBIC YARDS



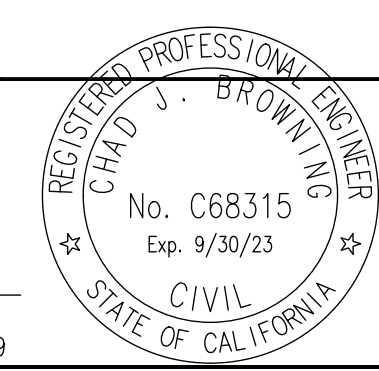
LANDS OF PORTAL PLAZA
APN#: 316-20-083

NO PART OF THIS DOCUMENT MAY BE REPRODUCED IN ANY FORM INCLUDING PHOTOCOPY, RECORDING OR ANY INFORMATION RETRIEVABLE AND STORAGE SYSTEM, WITHOUT PERMISSION IN WRITING FROM SANDIS.

MATCHLINE - SEE SHEET TM6.9

SANDIS CIVIL ENGINEERS SURVEYORS PLANNERS
 1700 S. Winchester Blvd, Suite 200, Campbell, CA 95008 | P. 408.636.0900 | F. 408.636.0999 | www.sandis.net
 SILICON VALLEY TRI-VALLEY CENTRAL VALLEY SACRAMENTO EAST BAY/SF

DATE: 03/23/2022	DATE: MARCH 23, 2022
SCALE: 1"=30'	
DRAWN BY: SP	<i>Chad J. Browning</i>
APPROVED BY: ND	
DRAWING NO.: 215028	CHAD J. BROWNING R.C.E. NO. 68315, EXPIRES 9-30-19



No.	REVISION/ISSUE	DATE	BY
REV-0	SB-35 DEVELOPMENT APPLICATION	03/27/2018	ND
REV-1	SB-35 APPLICATION REVISIONS	08/06/2018	ND
REV-2	SB-35 APPLICATION CONFORM SET	09/15/2018	ND
REV-3	SB-35 MODIFICATION DOCUMENTS	03/23/2022	ND

GRADING AND DRAINAGE PLAN

TENTATIVE SUBDIVISION MAP
VALLCO TOWN CENTER
CUPERTINO CALIFORNIA

SHEET
TM6.10
OF 73 SHEETS
Copyright © 2018 by Sandis

File: S:\215028\4 ENGINEERING\2 PLAN SETS\3 SHEET SET\TENTATIVE MAP\TM-6 GRADING AND DRAINAGE PLAN.dwg Date: Mar 09, 2022 - 11:51am, Isolis