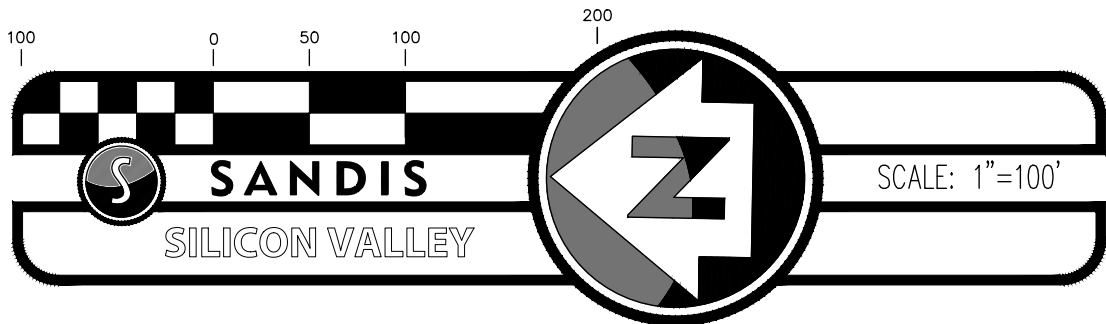
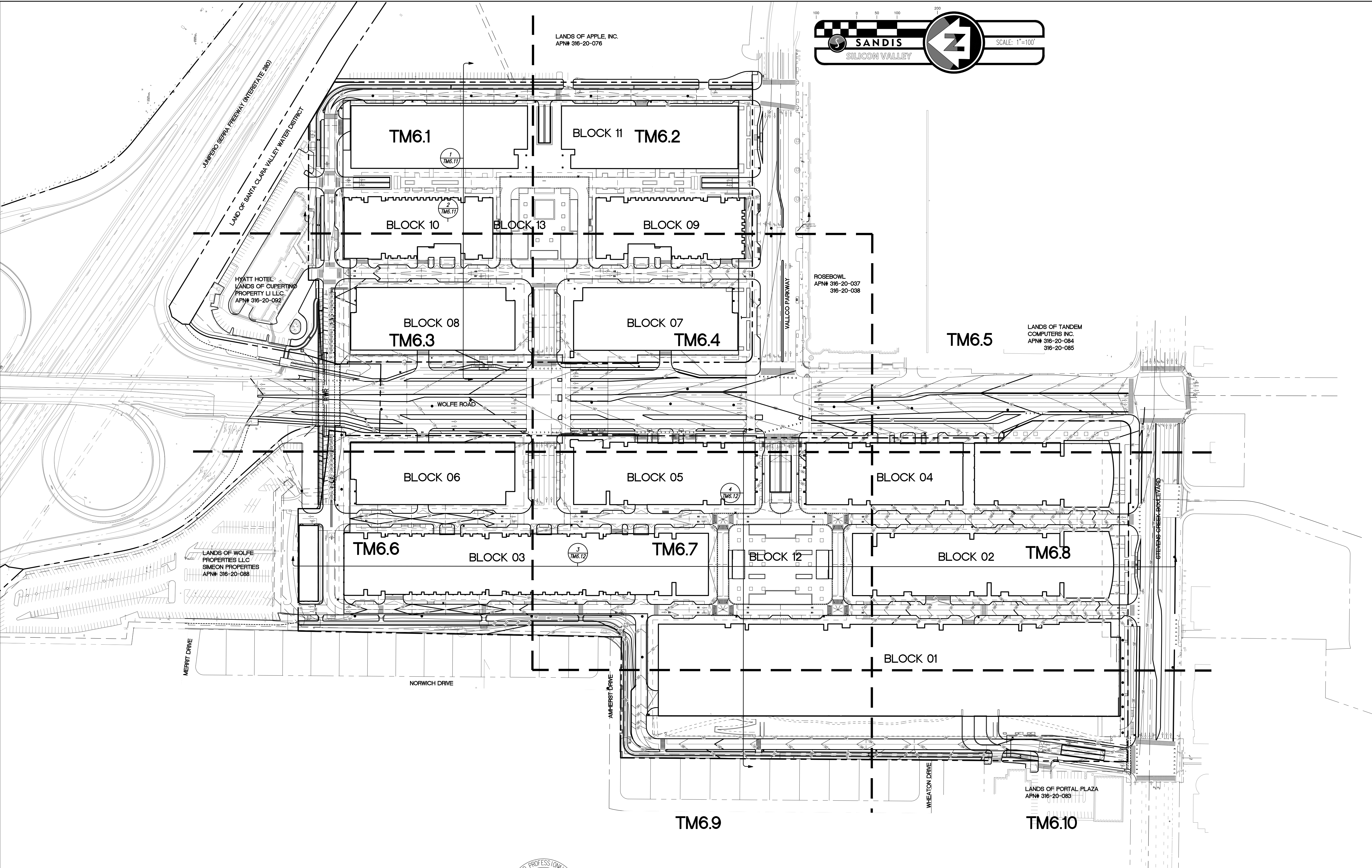


NO PART OF THIS DOCUMENT MAY BE REPRODUCED IN ANY FORM INCLUDING PHOTOCOPY, RECORDING OR ANY INFORMATION RETRIEVABLE AND STORAGE SYSTEM, WITHOUT PERMISSION IN WRITING FROM SANDIS.



LANDS OF APPLE, INC.
APN# 316-20-076

JUNIPERO SEPRA FREEWAY (INTERSTATE 280)
LAND OF SANTA CLARA VALLEY WATER DISTRICT

HYATT HOTEL
LANDS OF CUPERTINO
PROPERTY LI LLC
APN# 316-20-092

LANDS OF WOLFE
PROPERTIES LLC
SIMEON PROPERTIES
APN# 316-20-088

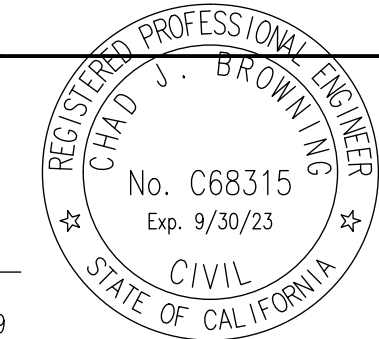
ROSEBOWL
APN# 316-20-037
316-20-038

LANDS OF TANDEN
COMPUTERS INC.
APN# 316-20-084
316-20-085

LANDS OF PORTAL PLAZA
APN# 316-20-083

SANDIS CIVIL ENGINEERS SURVEYORS PLANNERS
1700 S. Winchester Blvd, Suite 200, Campbell, CA 95008 | P. 408.636.0900 | F. 408.636.0999 | www.sandis.net
SILICON VALLEY TRI-VALLEY CENTRAL VALLEY SACRAMENTO EAST BAY/SF

DATE: 03/23/2022 DATE: MARCH 23, 2022
SCALE: 1"=30'
DRAWN BY: SP
APPROVED BY: ND
DRAWING NO.: 215028
CHAD J. BROWNING
R.C.E. NO. 68315, EXPIRES 9-30-19



No.	REVISION/ISSUE	DATE	BY
REV-0	SB-35 DEVELOPMENT APPLICATION	03/27/2018	ND
REV-1	SB-35 APPLICATION REVISIONS	08/06/2018	ND
REV-2	SB-35 APPLICATION CONFORM SET	09/15/2018	ND
REV-3	SB-35 MODIFICATION DOCUMENTS	03/23/2022	ND

OVERALL
GRADING AND DRAINAGE PLAN

TENTATIVE SUBDIVISION MAP
VALLCO TOWN CENTER
CUPERTINO CALIFORNIA

SHEET
TM6.0
OF 73 SHEETS
Copyright © 2018 by Sandis

File: S:\215028\4 ENGINEERING\2 PLAN SETS\3 SHEET SET\TENTATIVE MAP\TM-6 GRADING AND DRAINAGE PLAN.dwg Date: Mar 09, 2022 - 11:48am, Isols