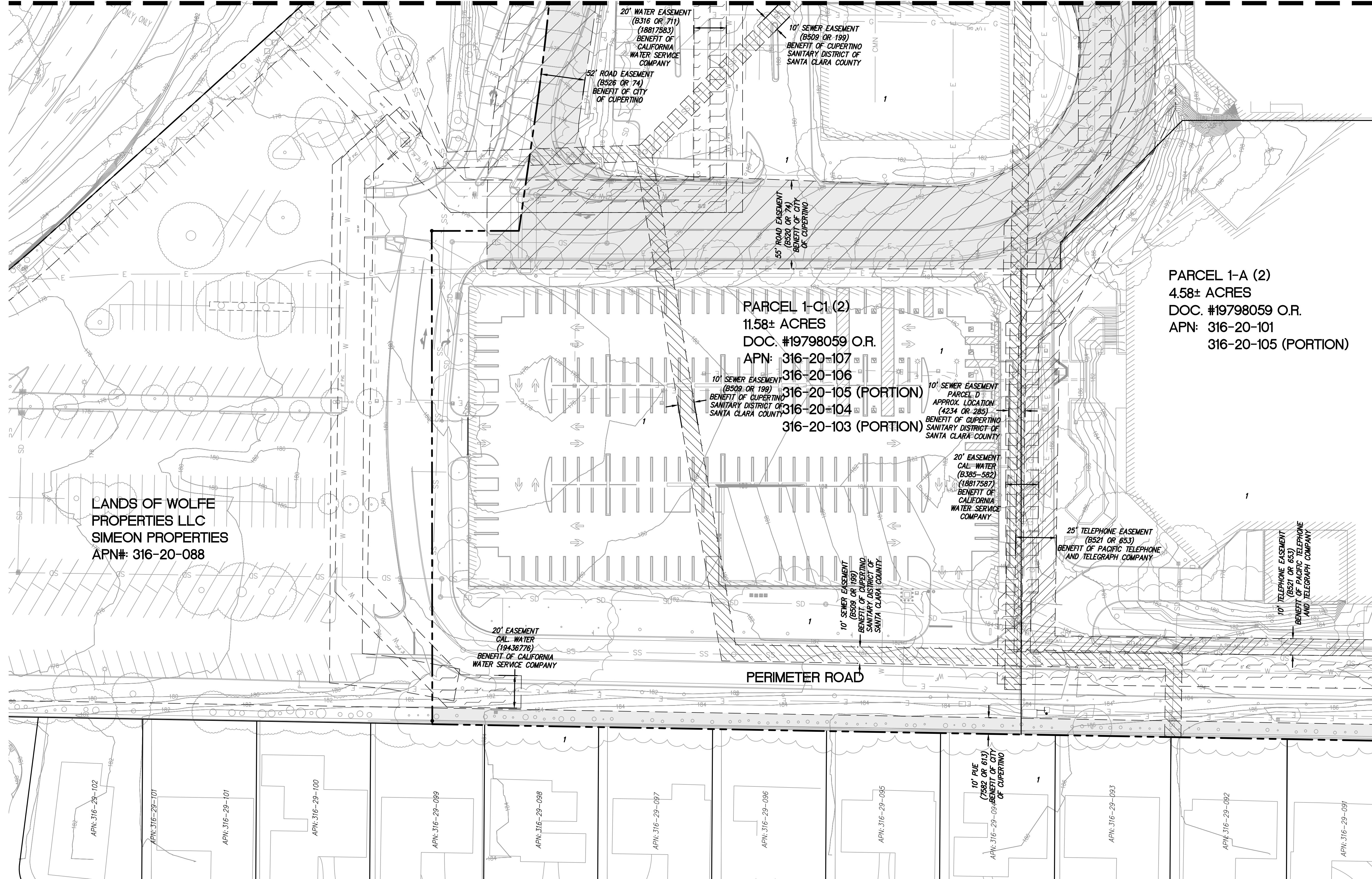


MATCHLINE - SEE SHEET TM4.3



**LEGEND**

---	PROPERTY LINE
- - - -	ADJACENT PROPERTY LINE STREET CENTERLINE (BASED ON CITY MONUMENTATION) EASEMENT LINE
////	RELINQUISHED INGRESS/ EGRESS RIGHTS TO ADJACENT PROPERTIES
[Pattern]	PUBLIC UTILITY EASEMENT (P.U.E.)
[Pattern]	ROADWAY EASEMENT
[Pattern]	PUBLIC ACCESS EASEMENT (P.A.E.)
[Pattern]	SANITARY SEWER EASEMENT
[Pattern]	WATER EASEMENT
[Pattern]	AIR RIGHTS EASEMENT
[Pattern]	STORMWATER MANAGEMENT FACILITY EASEMENT
[Pattern]	PUBLIC ROADWAY AND LANDSCAPE EASEMENT
[Pattern]	VEHICULAR AND PEDESTRIAN INGRESS AND EGRESS EASEMENT
[Pattern]	SIDEWALK EASEMENT
[Pattern]	TELEPHONE EASEMENT
[Pattern]	VEHICULAR TUNNEL EASEMENT
[Pattern]	COLUMNS, SUPPORTS, FOOTINGS EASEMENT
[Pattern]	PG&E EASEMENT
[Pattern]	EMERGENCY VEHICLE ACCESS EASEMENT (E.V.A.E.)

PARCEL 1-A (2)  
4.58± ACRES  
DOC. #19798059 O.R.  
APN: 316-20-101  
316-20-105 (PORTION)

PARCEL 1-C1 (2)  
11.58± ACRES  
DOC. #19798059 O.R.  
APN: 316-20-107  
316-20-106  
316-20-105 (PORTION)  
316-20-104  
316-20-103 (PORTION)

LANDS OF WOLFE  
PROPERTIES LLC  
SIMEON PROPERTIES  
APN#: 316-20-088

**NOTES:**  
1. ONLY EXISTING EASEMENTS ARE SHOWN ON THIS SHEET. ALL NEW EASEMENTS NEEDED FOR THE DEVELOPMENT ARE SHOWN ON THIS SHEETS.

MATCHLINE - SEE SHEET TM4.7

NO PART OF THIS DOCUMENT MAY BE REPRODUCED IN ANY FORM INCLUDING PHOTOCOPY, RECORDING OR ANY INFORMATION RETRIEVABLE AND STORAGE SYSTEM, WITHOUT PERMISSION IN WRITING FROM SANDIS.

**SANDIS** CIVIL ENGINEERS SURVEYORS PLANNERS  
1700 S. Winchester Blvd, Suite 200, Campbell, CA 95008 | P. 408.636.0900 | F. 408.636.0999 | www.sandis.net  
SILICON VALLEY TRI-VALLEY CENTRAL VALLEY SACRAMENTO EAST BAY/SF

DATE: 09-15-2018	DATE: SEPTEMBER 15, 2018
SCALE: 1"=30'	
DRAWN BY: SP	
APPROVED BY: ND	
DRAWING NO.: 215028	KELLY S. JOHNSON P.L.S. NO. 9126, EXPIRES 9-30-18



No.	REVISION/ISSUE	DATE	BY
REV-0	SB-35 DEVELOPMENT APPLICATION	03/27/2018	ND
REV-1	SB-35 APPLICATION REVISIONS	08/06/2018	ND
REV-2	SB-35 APPLICATION CONFORM SET	09/15/2018	ND

EXISTING PUBLIC AND PRIVATE EASEMENTS AND BOUNDARIES

TENTATIVE SUBDIVISION MAP  
VALLCO TOWN CENTER  
CUPERTINO CALIFORNIA