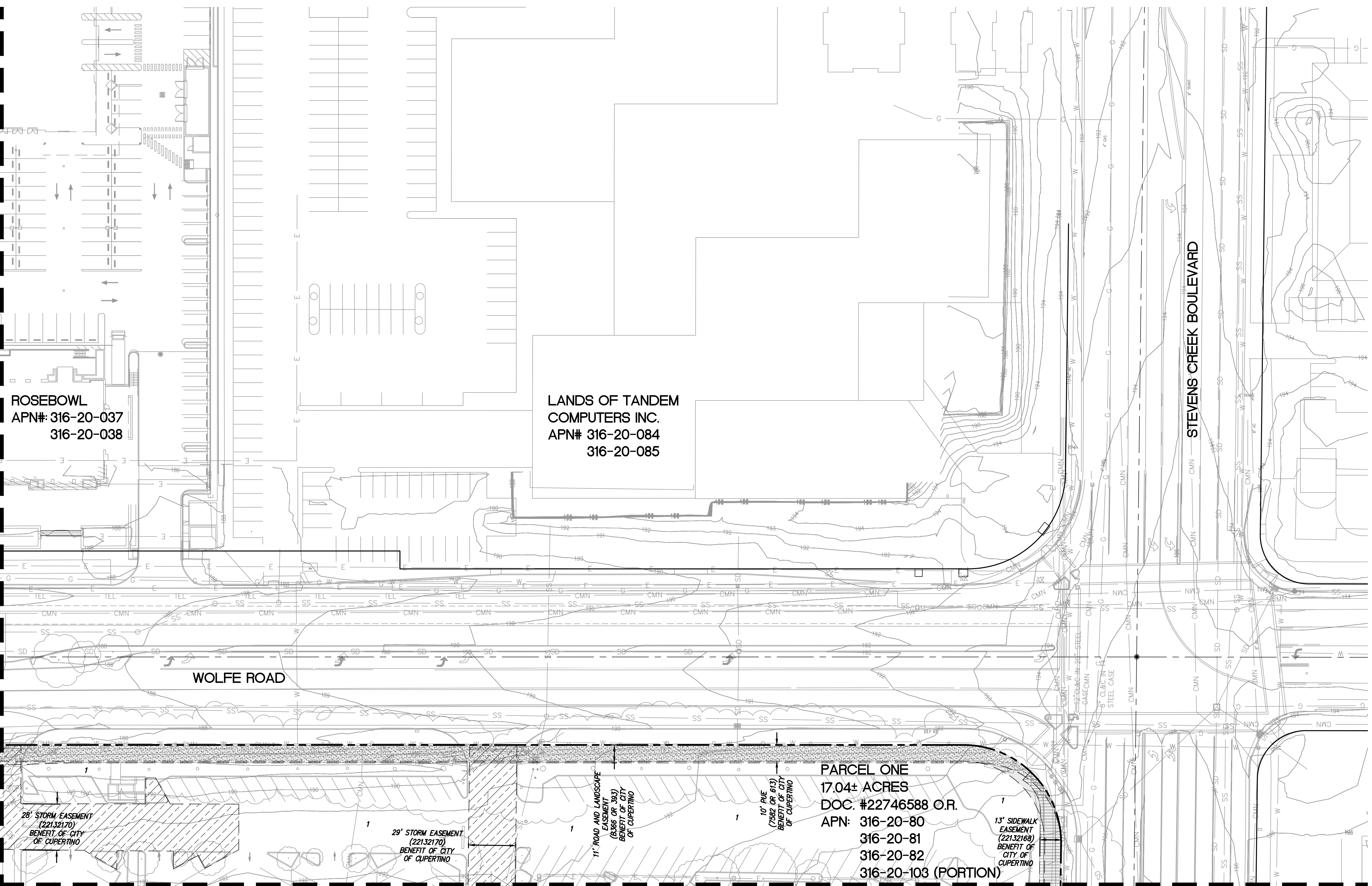


NO PART OF THIS DOCUMENT MAY BE REPRODUCED IN ANY FORM INCLUDING PHOTOCOPY, RECORDING OR ANY INFORMATION RETRIEVABLE AND STORAGE SYSTEM, WITHOUT PERMISSION IN WRITING FROM SANDIS.

MATCHLINE - SEE SHEET TM4.4



ROSEBOWL  
APN# 316-20-037  
316-20-038

LANDS OF TANDEM  
COMPUTERS INC.  
APN# 316-20-084  
316-20-085

WOLFE ROAD

STEVENS CREEK BOULEVARD

28' STORM EASEMENT  
(22132170)  
BENEFIT OF CITY  
OF CUPERTINO

29' STORM EASEMENT  
(22132170)  
BENEFIT OF CITY  
OF CUPERTINO

11' ROAD AND LANDSCAPE  
EASEMENT  
(03366 OR 303)  
BENEFIT OF CITY  
OF CUPERTINO

10' P.U.E.  
(7582 OR 613)  
BENEFIT OF CITY  
OF CUPERTINO

PARCEL ONE  
17.04± ACRES  
DOC. #22746588 O.R.  
APN: 316-20-80  
316-20-81  
316-20-82  
316-20-103 (PORTION)

13' SIDEWALK  
EASEMENT  
(22132168)  
BENEFIT OF  
CITY OF  
CUPERTINO

**LEGEND**

- PROPERTY LINE
- - - ADJACENT PROPERTY LINE  
STREET CENTERLINE (BASED ON  
CITY MONUMENTATION)  
EASEMENT LINE
- /// RELINQUISHED INGRESS/ EGRESS  
RIGHTS TO ADJACENT PROPERTIES
- ▨ PUBLIC UTILITY EASEMENT (P.U.E.)
- ▩ ROADWAY EASEMENT
- ▧ PUBLIC ACCESS EASEMENT (P.A.E.)
- ▦ SANITARY SEWER EASEMENT
- ▥ WATER EASEMENT
- ▤ AIR RIGHTS EASEMENT
- ▣ STORMWATER MANAGEMENT FACILITY  
EASEMENT
- ▢ PUBLIC ROADWAY AND LANDSCAPE  
EASEMENT
- VEHICULAR AND PEDESTRIAN INGRESS  
AND EGRESS EASEMENT
- SIDEWALK EASEMENT
- ▧ TELEPHONE EASEMENT
- ▦ VEHICULAR TUNNEL EASEMENT
- ▥ COLUMNS, SUPPORTS, FOOTINGS EASEMENT
- ▤ PG&E EASEMENT
- ▣ EMERGENCY VEHICLE ACCESS  
EASEMENT (E.V.A.E.)

**NOTES:**

1. ONLY EXISTING EASEMENTS ARE SHOWN ON THIS SHEET. ALL NEW EASEMENTS NEEDED FOR THE DEVELOPMENT ARE SHOWN ON THIS SHEET.

MATCHLINE - SEE SHEET TM4.8

**SANDIS** CIVIL ENGINEERS  
SURVEYORS  
PLANNERS

1700 S. Winchester Blvd, Suite 200, Campbell, CA 95008 | P. 408.636.0900 | F. 408.636.0999 | www.sandis.net

SILICON VALLEY TRI-VALLEY CENTRAL VALLEY SACRAMENTO EAST BAY/SF

DATE: 09-15-2018	DATE: SEPTEMBER 15, 2018
SCALE: 1"=30'	
DRAWN BY: SP	
APPROVED BY: ND	
DRAWING NO.: 215028	



No.	REVISION/ISSUE	DATE	BY
REV-0	SB-35 DEVELOPMENT APPLICATION	03/27/2018	ND
REV-1	SB-35 APPLICATION REVISIONS	08/06/2018	ND
REV-2	SB-35 APPLICATION CONFORM SET	09/15/2018	ND

EXISTING PUBLIC  
AND PRIVATE EASEMENTS AND BOUNDARIES

TENTATIVE SUBDIVISION MAP  
VALLCO TOWN CENTER  
CUPERTINO CALIFORNIA

SHEET  
**TM4.5**  
OF 73 SHEETS