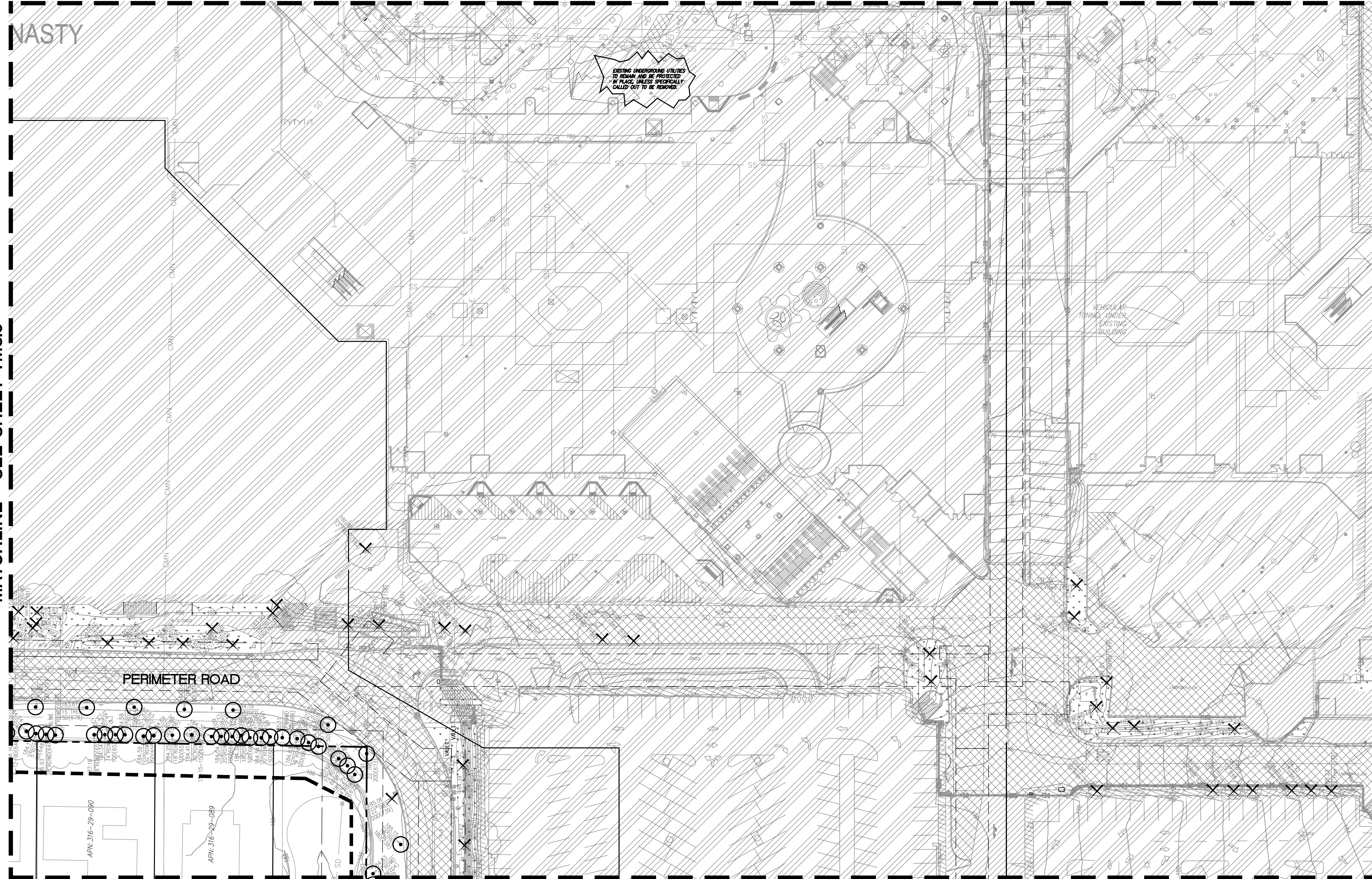


MATCHLINE - SEE SHEET TM3.4



- LEGEND**
- PROPERTY LINE
 - - - ADJACENT PROPERTY LINE
 - STREET CENTERLINE
 - EASEMENT LINE
 - TREE TO REMAIN, PROTECT IN PLACE PER ARBORIST REPORT.
 - △ TREE TO BE TRANSPOSED PER ARBORIST REPORT.
 - × TREE TO BE REMOVED. PER ARBORIST REPORT.
 - GARAGE LINE
 - XXXXXXXXXX- REMOVE EXISTING UTILITY, CUT AND CAP AT LOCATION SHOWN PER UTILITY OWNER'S REQUIREMENTS.
 - LIMIT OF WORK
 - [Hatched Box] AC PAVEMENT TO BE REMOVED. UTILITIES WITHIN THE AC PAVEMENT WHICH ARE SERVING EXISTING BUILDINGS TO BE DEMOLISHED SHALL BE REMOVED.
 - [Diagonal Hatched Box] CONCRETE TO BE REMOVED.
 - [Grid Hatched Box] DEMOLISH AND REMOVE GRAVEL/WALK AND ANY ASSOCIATED HEADER BOARDS.
 - [Square Hatched Box] DEMOLISH AND REMOVE PAVERS AND ANY ASSOCIATED HEADER BOARDS OR CURBS.
 - [Dotted Box] CLEAR AND GRUB EXISTING LANDSCAPE AREA SO NO ORGANICS ARE STILL PRESENT.
 - [Diagonal Hatched Box] EXISTING BUILDINGS TO BE DEMOLISHED. EXISTING UTILITIES SERVING THE BUILDINGS WHICH ARE NO LONGER NEEDED ARE TO BE REMOVED AND CAPPED.

- DEMOLITION NOTES**
1. SEE PLANNING PLAN SHEET P-0602B FOR TREE DISPOSITION TREE COUNT. FINAL FINAL DISPOSITION OF TREES WITH THE EXACT NUMBER OF TREES TO BE REMOVED, KEPT AND TRANSPOSED ARE TO BE DETERMINE DURING THE FINAL SITE PLAN.
 2. THIS DEMOLITION PLAN IS SHOWN FOR SCOPE REFERENCE ONLY. FULL DETAILS AND SCOPE OF DEMOLITION WORK WILL BE SHOWN ON THE PERMIT DOCUMENTS. PHASING OF DEMOLITION WILL OCCUR TO ENSURE ACCESS IS MAINTAINED THROUGHOUT THE LENGTH OF THE PROJECT TO NEIGHBORING PROPERTIES AND WITHIN THE PUBLIC RIGHT-OF-WAY.
 3. ALL UNDERGROUND UTILITIES, LANDSCAPE FEATURES, AND HARDSCAPE FEATURES NOT SHOWN TO BE REMOVED THAT ARE IMPACTED OR DAMAGED BY THE CONTRACTOR OR THEIR SUB-CONTRACTORS SHALL BE REMOVED AND REPLACED IN KIND. ITEMS MAY INCLUDE, BUT NOT LIMITED TO, UNDERGROUND UTILITY AND IRRIGATION LINES, CURB, GUTTER, SIDEWALK, PAVEMENT, FENCING, STRIPING AND OTHER PAVEMENT MARKINGS, PLANTING, LANDSCAPING, AND BOLLARDS.
 4. PROTECT ALL EXISTING UTILITIES IN PLACE UNLESS SPECIFICALLY SERVING AN EXISTING BUILDING WHICH IS BEING REMOVED. REPLACE ANY DAMAGED UTILITY TO REMAIN TO KEEP OPERABLE DURING CONSTRUCTION.
 5. THIS DEMOLITION PLAN IS NOT A COMPLETE INVENTORY OF UTILITIES OR STRUCTURES. CONTRACTOR SHALL CONTACT ENGINEER IF ANY UNKNOWN OR UNEXPECTED UTILITIES OR OTHER STRUCTURES ARE FOUND. THE CONTRACTOR IS RESPONSIBLE FOR ALL DEMOLITION NECESSARY TO PREPARE THE SITE FOR DEVELOPMENT.
 6. ALL UTILITY DEMOLITION TO BE DISCONNECTED AND CAPPED WHERE SHOWN ON THE PLAN PER UTILITY OWNERS SPECIFICATIONS AND STANDARDS.
 7. ALL UTILITY SHUT DOWNS ARE TO BE AVOIDED. IF SHUT DOWNS ARE NECESSARY, WORK MUST BE COORDINATED AND APPROVED BY ALL PARTIES INVOLVED.
 8. ALL EXISTING STORM DRAIN, SANITARY SEWER, AND WATER MAINS THAT SERVE EXISTING BUILDINGS THAT ARE NOT BEING DEMOLISHED MUST REMAIN OPERABLE DURING CONSTRUCTION.

MATCHLINE - SEE SHEET TM3.9

MATCHLINE - SEE SHEET TM3.6

MATCHLINE - SEE SHEET TM3.8

NO PART OF THIS DOCUMENT MAY BE REPRODUCED IN ANY FORM INCLUDING PHOTOCOPY, RECORDING OR ANY INFORMATION RETRIEVABLE AND STORAGE SYSTEM, WITHOUT PERMISSION IN WRITING FROM SANDIS.

SANDIS CIVIL ENGINEERS SURVEYORS PLANNERS
 1700 S. Winchester Blvd, Suite 200, Campbell, CA 95008 | P. 408.636.0900 | F. 408.636.0999 | www.sandis.net
 SILICON VALLEY TRI-VALLEY CENTRAL VALLEY SACRAMENTO EAST BAY/SF

DATE: 09-15-2018 DATE: SEPTEMBER 15, 2018
 SCALE: 1"=30'
 DRAWN BY: SP
 APPROVED BY: ND
 DRAWING NO.: 215028
 KELLY S. JOHNSON
 P.L.S. NO. 9126, EXPIRES 9-30-18



No.	REVISION/ISSUE	DATE	BY
REV-0	SB-35 DEVELOPMENT APPLICATION	03/27/2018	ND
REV-1	SB-35 APPLICATION REVISIONS	08/06/2018	ND
REV-2	SB-35 APPLICATION CONFORM SET	09/15/2018	ND

DEMOLITION AND TREE DISPOSITION PLAN

TENTATIVE SUBDIVISION MAP
 VALLCO TOWN CENTER
 CUPERTINO CALIFORNIA

File: \\sandisvm1\SAN\215028\4 ENGINEERING\2 PLAN SETS\3 SHEET SET\TENTATIVE MAP\TM-3 DEMOLITION AND TREE DISPOSITION PLAN.dwg Date: Sep 17, 2018 - 6:02pm, vlee