

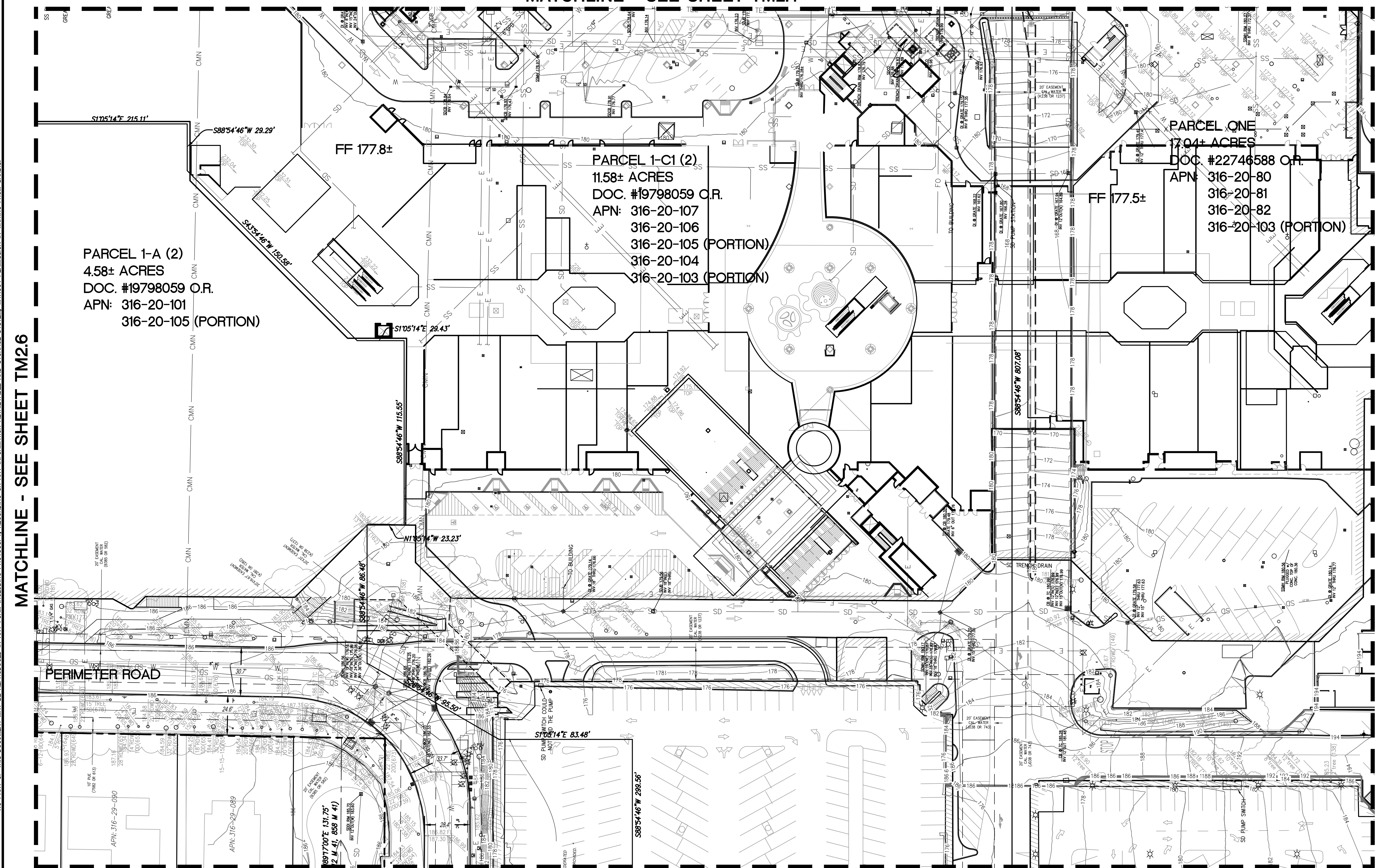
MATCHLINE - SEE SHEET TM2.4

LEGEND

--- PROPERTY LINE
 - - - ADJACENT PROPERTY LINE
 - - - STREET CENTERLINE
 - - - EASEMENTS

NOTES:

- ONLY FEE PARCELS ARE SHOWN ON THIS PLAN, ALL LEASE LINES ARE TO BE REMOVED AS PART OF THIS TENTATIVE MAP AND RECORDED ON THE SUBSEQUENT FINAL MAP.
- ANY EASEMENTS ON ADJACENT PARCELS TO BE MODIFIED WILL BE MODIFIED UNDER A SEPARATE INSTRUMENT AND WILL REQUIRE FULL APPROVAL OF ADJACENT PROPERTY AND EASEMENT OWNER.
- CONTOURS SHOWN ARE AT ONE FOOT INTERVALS.



MATCHLINE - SEE SHEET TM2.6

MATCHLINE - SEE SHEET TM2.8

MATCHLINE - SEE SHEET TM2.9

SANDIS CIVIL ENGINEERS SURVEYORS PLANNERS

1700 S. Winchester Blvd, Suite 200, Campbell, CA 95008 | P. 408.636.0900 | F. 408.636.0999 | www.sandis.net

SILICON VALLEY TRI-VALLEY CENTRAL VALLEY SACRAMENTO EAST BAY/ SF

DATE: 09-15-2018 DATE: SEPTEMBER 15, 2018

SCALE: 1"=30'

DRAWN BY: SP

APPROVED BY: ND

DRAWING NO.: 215028

KELLY S. JOHNSON
P.L.S. NO. 9126, EXPIRES 9-30-18



| No. | REVISION/ISSUE | DATE | BY |
|-------|-------------------------------|------------|----|
| REV-0 | SB-35 DEVELOPMENT APPLICATION | 03/27/2018 | ND |
| REV-1 | SB-35 APPLICATION REVISIONS | 08/06/2018 | ND |
| REV-2 | SB-35 APPLICATION CONFORM SET | 09/15/2018 | ND |

TOPOGRAPHIC SURVEY

TENTATIVE SUBDIVISION MAP
VALLCO TOWN CENTER
CUPERTINO CALIFORNIA

SHEET
TM2.7
OF 73 SHEETS