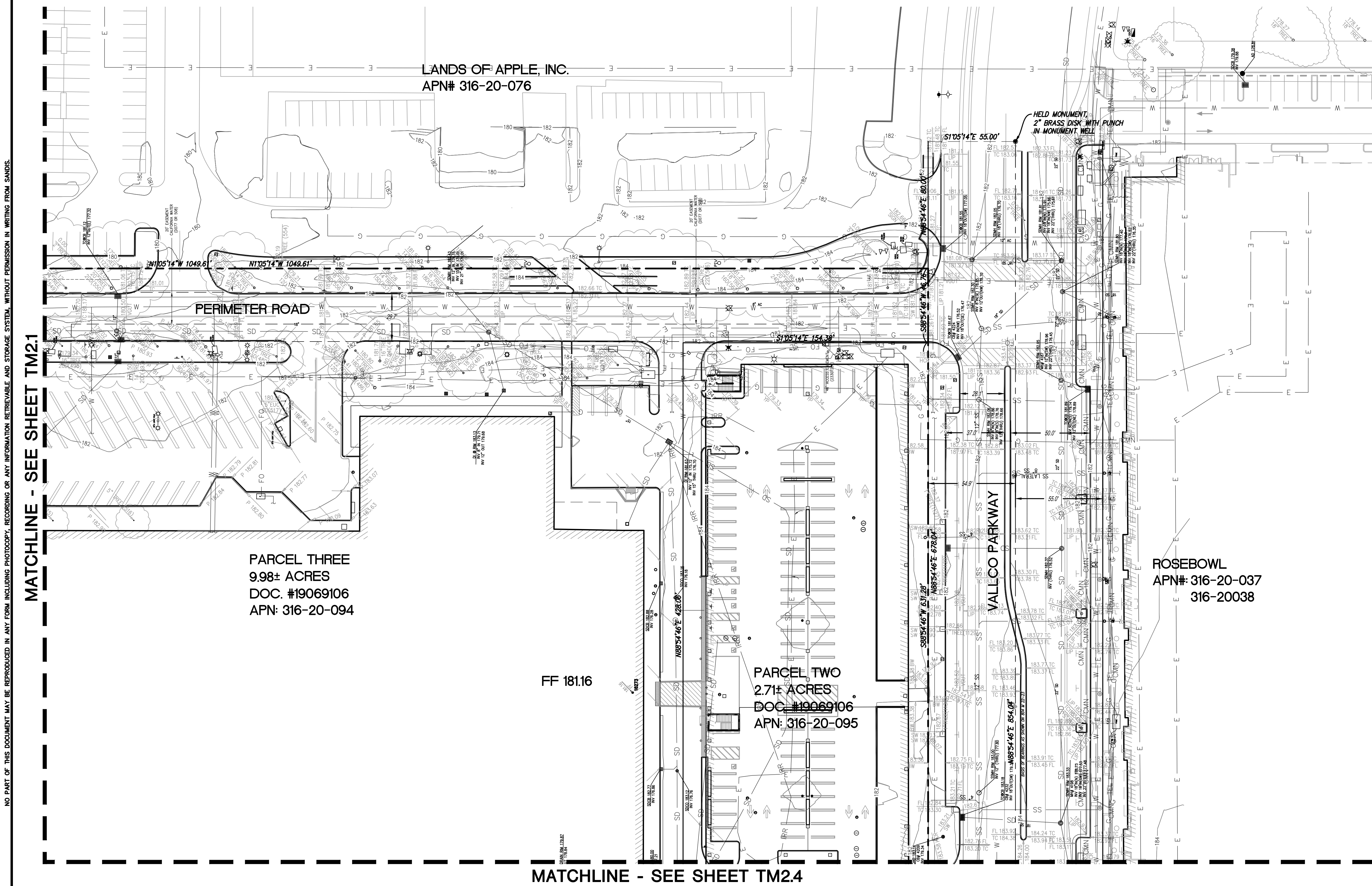


LEGEND

--- PROPERTY LINE
 - - - ADJACENT PROPERTY LINE
 - - - STREET CENTERLINE
 - - - EASEMENTS

NOTES:

- ONLY FEE PARCELS ARE SHOWN ON THIS PLAN, ALL LEASE LINES ARE TO BE REMOVED AS PART OF THIS TENTATIVE MAP AND RECORDED ON THE SUBSEQUENT FINAL MAP.
- ANY EASEMENTS ON ADJACENT PARCELS TO BE MODIFIED WILL BE MODIFIED UNDER A SEPARATE INSTRUMENT AND WILL REQUIRE FULL APPROVAL OF ADJACENT PROPERTY AND EASEMENT OWNER.
- CONTOURS SHOWN ARE AT ONE FOOT INTERVALS.



NO PART OF THIS DOCUMENT MAY BE REPRODUCED IN ANY FORM INCLUDING PHOTOCOPY, RECORDING OR ANY INFORMATION RETRIEVABLE AND STORAGE SYSTEM, WITHOUT PERMISSION IN WRITING FROM SANDIS.

MATCHLINE - SEE SHEET TM2.1

MATCHLINE - SEE SHEET TM2.4

SANDIS CIVIL ENGINEERS SURVEYORS PLANNERS

1700 S. Winchester Blvd, Suite 200, Campbell, CA 95008 | P. 408.636.0900 | F. 408.636.0999 | www.sandis.net

SILICON VALLEY TRI-VALLEY CENTRAL VALLEY SACRAMENTO EAST BAY/SF

| | |
|---------------------|------------------------------------------------------|
| DATE: 09-15-2018 | DATE: SEPTEMBER 15, 2018 |
| SCALE: 1"=30' | |
| DRAWN BY: SP | |
| APPROVED BY: ND | |
| DRAWING NO.: 215028 | KELLY S. JOHNSON P.L.S. NO. 9126, EXPIRES 9-30-18 |



| No. | REVISION/ISSUE | DATE | BY |
|-------|-------------------------------|------------|----|
| REV-0 | SB-35 DEVELOPMENT APPLICATION | 03/27/2018 | ND |
| REV-1 | SB-35 APPLICATION REVISIONS | 08/06/2018 | ND |
| REV-2 | SB-35 APPLICATION CONFORM SET | 09/15/2018 | ND |

TOPOGRAPHIC SURVEY

TENTATIVE SUBDIVISION MAP
 VALLCO TOWN CENTER
 CUPERTINO CALIFORNIA

SHEET
TM2.2
 OF 73 SHEETS