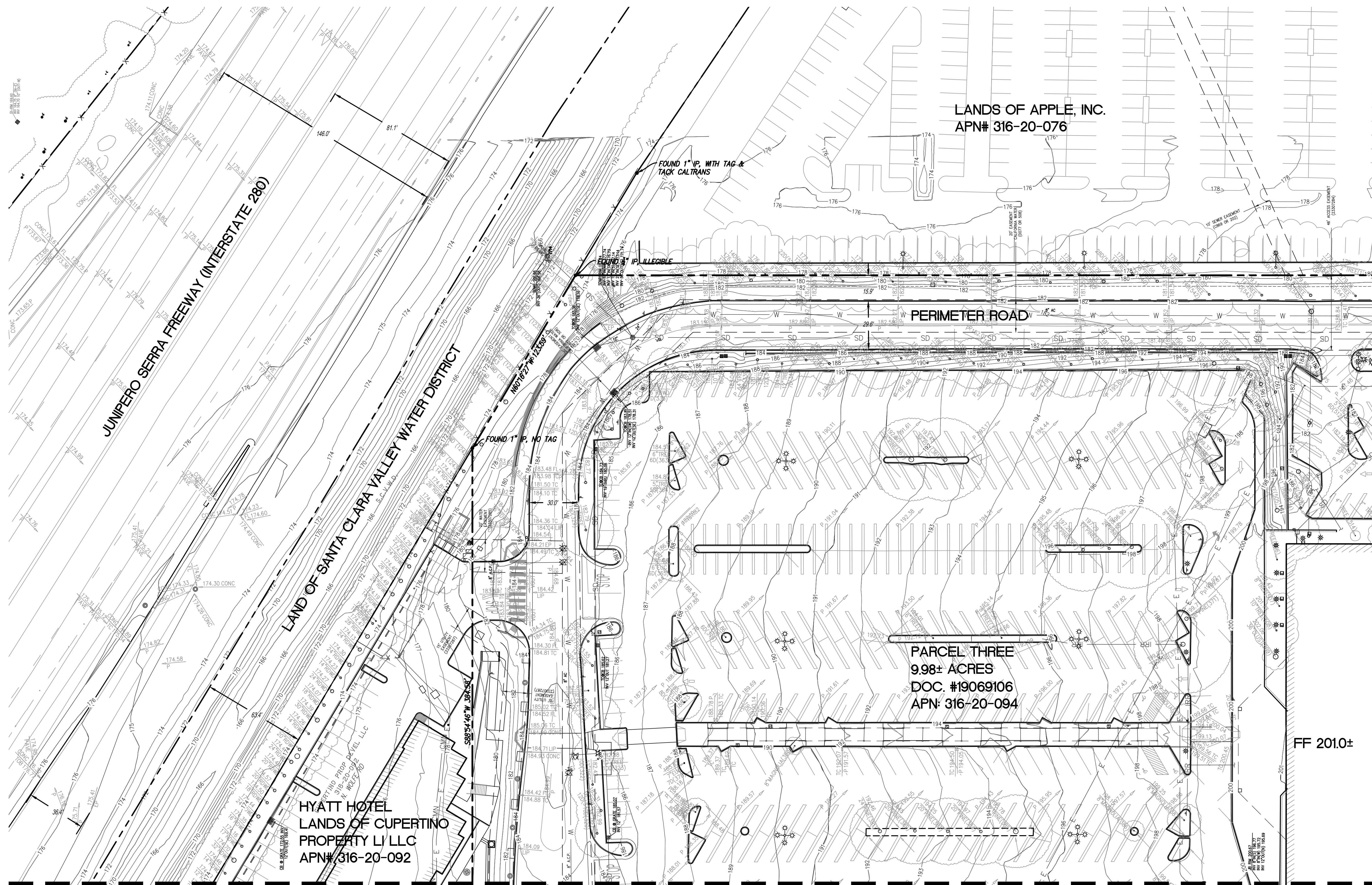


**LEGEND**

--- PROPERTY LINE  
 - - - ADJACENT PROPERTY LINE  
 - - - STREET CENTERLINE  
 - - - EASEMENTS

**NOTES:**

- ONLY FEE PARCELS ARE SHOWN ON THIS PLAN, ALL LEASE LINES ARE TO BE REMOVED AS PART OF THIS TENTATIVE MAP AND RECORDED ON THE SUBSEQUENT FINAL MAP.
- ANY EASEMENTS ON ADJACENT PARCELS TO BE MODIFIED WILL BE MODIFIED UNDER A SEPARATE INSTRUMENT AND WILL REQUIRE FULL APPROVAL OF ADJACENT PROPERTY AND EASEMENT OWNER.
- CONTOURS SHOWN ARE AT ONE FOOT INTERVALS.



NO PART OF THIS DOCUMENT MAY BE REPRODUCED IN ANY FORM INCLUDING PHOTOCOPY, RECORDING OR ANY INFORMATION RETRIEVABLE AND STORAGE SYSTEM, WITHOUT PERMISSION IN WRITING FROM SANDIS.

MATCHLINE - SEE SHEET TM22

MATCHLINE - SEE SHEET TM2.3

**SANDIS** CIVIL ENGINEERS SURVEYORS PLANNERS  
 1700 S. Winchester Blvd, Suite 200, Campbell, CA 95008 | P. 408.636.0900 | F. 408.636.0999 | www.sandis.net  
 SILICON VALLEY TRI-VALLEY CENTRAL VALLEY SACRAMENTO EAST BAY/SF

DATE: 09-15-2018  
 SCALE: 1"=30'  
 DRAWN BY: SP  
 APPROVED BY: ND  
 DRAWING NO.: 215028

DATE: SEPTEMBER 15, 2018  
 KELLY S. JOHNSON  
 P.L.S. NO. 9126, EXPIRES 9-30-18



No.	REVISION/ISSUE	DATE	BY
REV-0	SB-35 DEVELOPMENT APPLICATION	03/27/2018	ND
REV-1	SB-35 APPLICATION REVISIONS	08/06/2018	ND
REV-2	SB-35 APPLICATION CONFORM SET	09/15/2018	ND

TOPOGRAPHIC SURVEY

TENTATIVE SUBDIVISION MAP  
 VALLCO TOWN CENTER  
 CUPERTINO CALIFORNIA

SHEET  
**TM2.1**  
 OF 73 SHEETS  
 Copyright © 2018 by Sandis