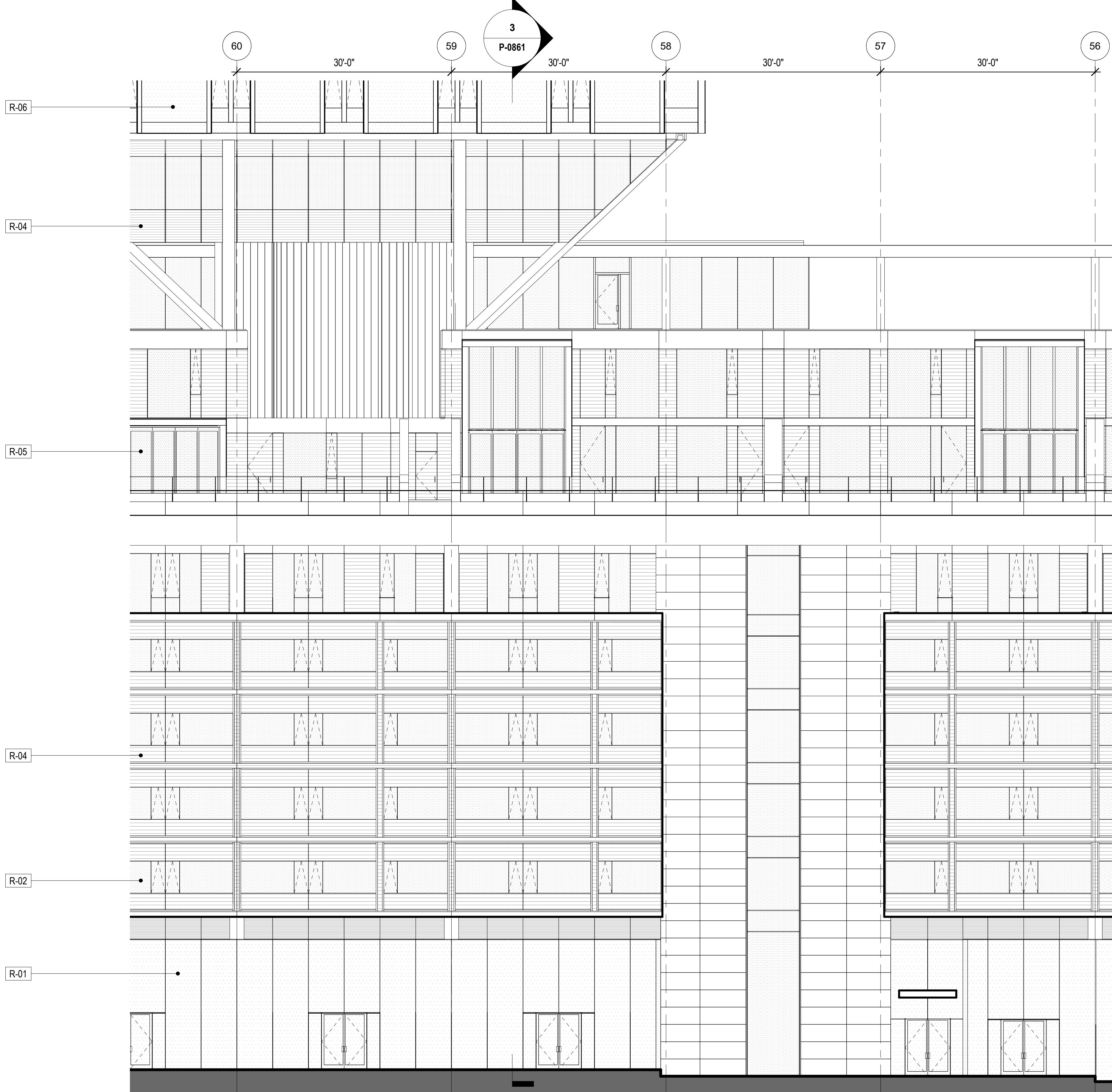
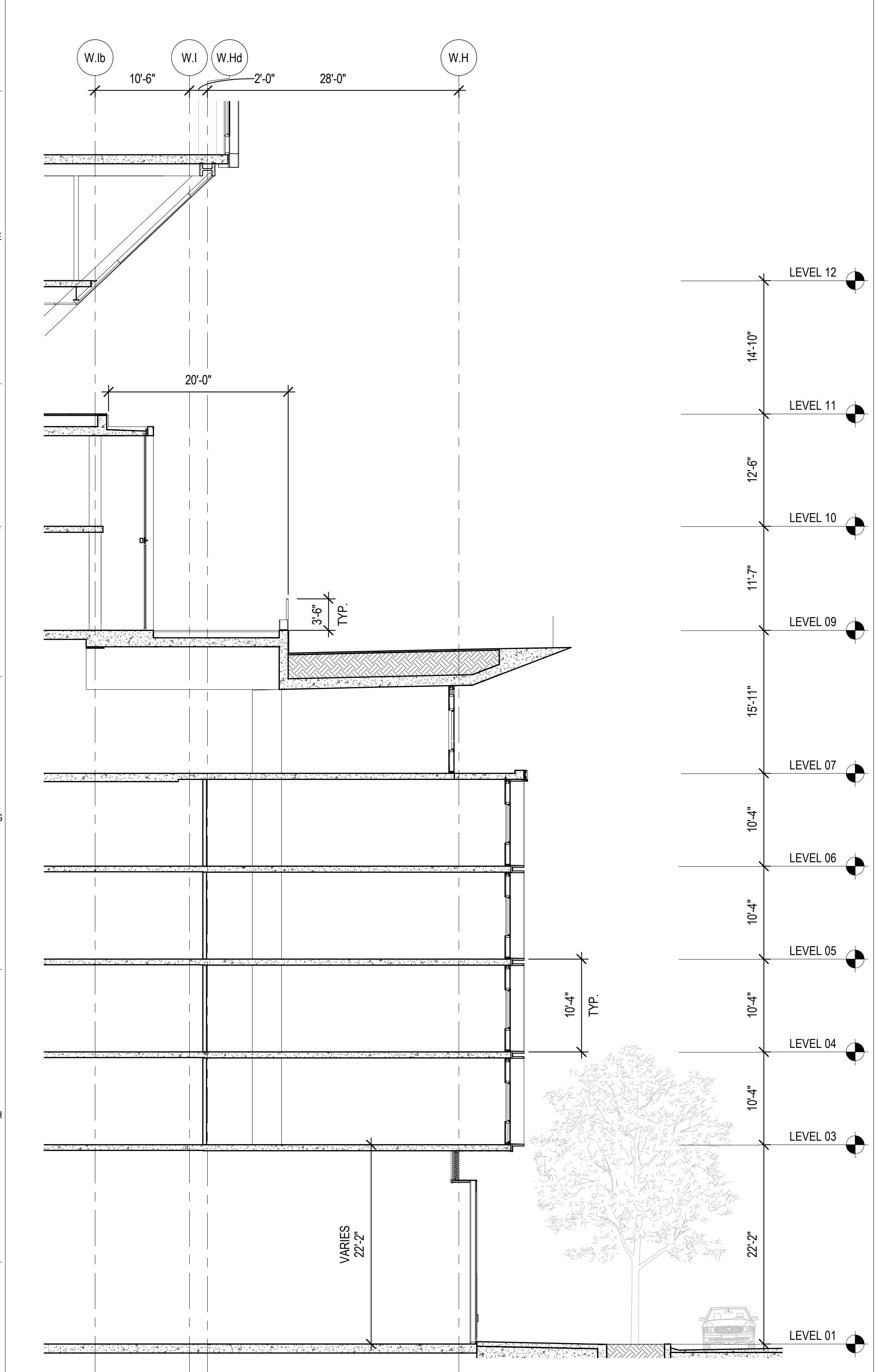


PARTIAL SECTION - RESIDENTIAL TOWER TYPICAL
1/8" = 1'-0"

PARTIAL ELEVATION - RESIDENTIAL TOWER TYPICAL
1/8" = 1'-0"

PARTIAL 3D MODEL PERSPECTIVE - RESIDENTIAL BUILDING



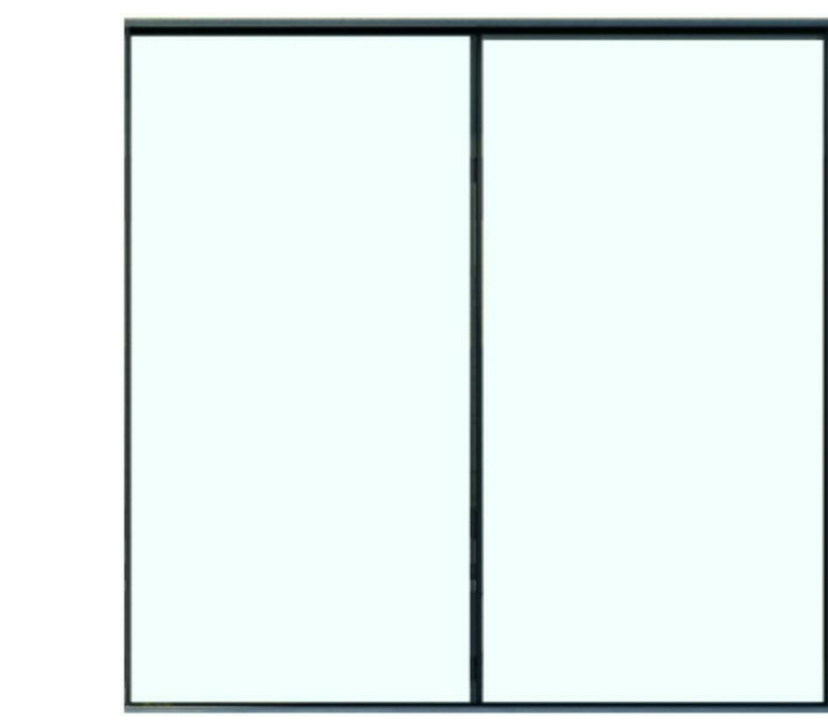
PARTIAL SECTION - RESIDENTIAL BUILDING
1/8" = 1'-0"

PARTIAL ELEVATION - RESIDENTIAL BUILDING
1/8" = 1'-0"

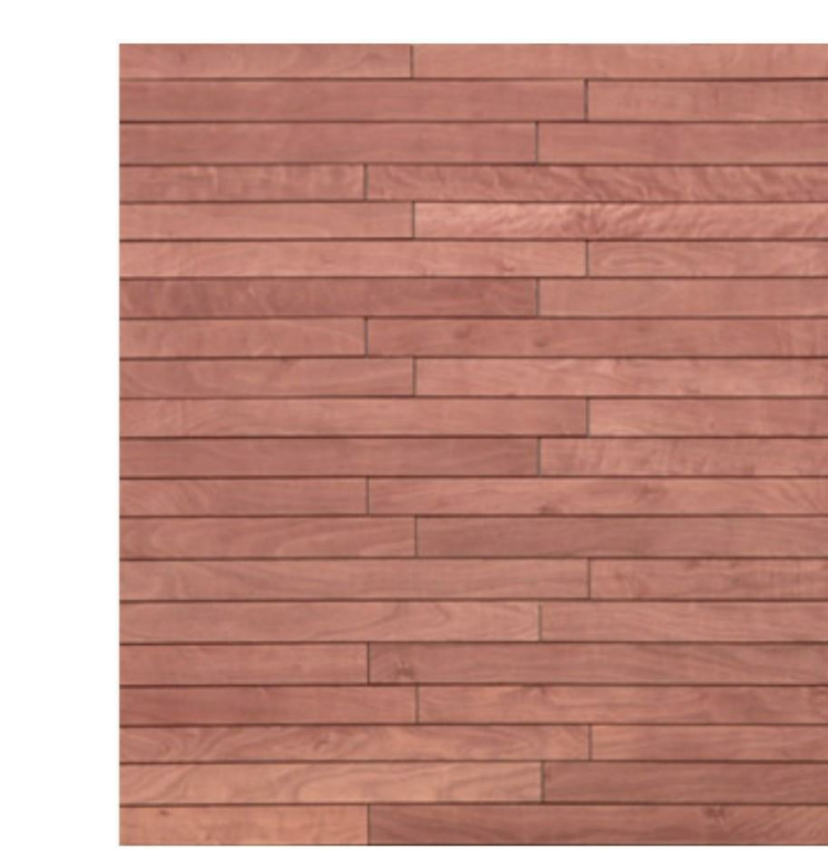
R-06 WINDOW WALL
GLASS AND ALUMINUM OPERABLE WINDOWS



R-05 SLIDING, SWING, AND FOLDING DOORS
GLASS AND ALUMINUM PATIO DOORS



R-04 "WOOD" LOOK OPAQUE PANEL
SOLID METAL PANEL, COLOR VARIES



R-03 SLIDING SCREEN
PAINTED ALUMINUM SLIDING PRIVACY / SOLAR SCREENS



R-02 TRANSPARENT PANEL
GLASS AND ALUMINUM OPERABLE WINDOWS AND SWING DOORS



R-01 STOREFRONT
GLASS AND ALUMINUM / STAINLESS STEEL
(NOTE: RETAIL STOREFRONTS SUBJECT TO TENANT FIT-OUT AND COMPANY DESIGN)



*NOTE: MATERIALS, COLORS, AND FACADE DESIGNS ARE FOR REFERENCE OF QUALITY OF DESIGN AND SUBJECT TO CHANGE FOR SUBMISSION OF BUILDING PERMITS.

THE RISE

OWNER - VALICO PROPERTY OWNER LLC
2800 EL CAMINO REAL, SUITE 410, PALO ALTO, CA 94306
T. 650-344-1530

ARCHITECTURE - RAFAEL VINOLY ARCHITECTS
375 PEARL STREET, 31ST FLOOR, NEW YORK, NY 10038
T. 212-929-0500

ARCHITECTURE - RAFAEL VINOLY ARCHITECTS
10123 N. WOLFE ROAD, CUPERTINO, CA 95014
T. 408-627-7090

LANDSCAPE ARCHITECTURE - O&N PARTNERSHIP LTD.
1801 JOHN F. KENNEDY BLVD, SUITE 200, CAMPBELL, CA 95008
T. 214-440-0030

CIVIL - SANDS CIVIL ENGINEERS SURVEYORS PLANNERS, INC.
1100 S. WINCHESTER BLVD, SUITE 200, CAMPBELL, CA 95008
T. 408-636-9000

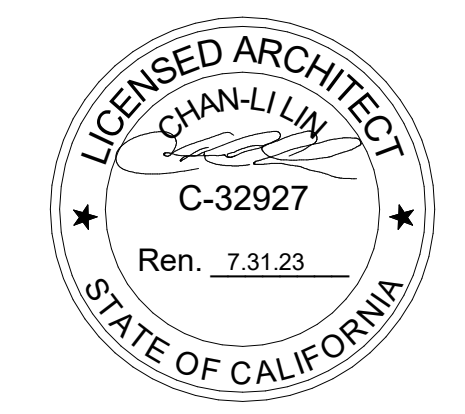
TRAFFIC - KIMLEY HORN AND ASSOCIATES, INC.
100 W. SAN FERNANDO STREET, SUITE 250, SAN JOSE, CA 95113
T. 669-800-4130

LIGHTING DESIGN - ONE LUX STUDIO
158 WEST 20TH STREET, 10TH FLOOR, NEW YORK, NY 10011
T. 212-201-6790

SIGNAGE & WAYFINDING - EXIT DESIGN
725 N. 4TH STREET, PHILADELPHIA, PA 19123
T. 215-681-1900

PARKING ENGINEERING - WATRY DESIGN, INC.
2099 GATEWAY PLACE, SUITE 550, SAN JOSE, CA 95110
T. 408-395-7900

FOOD SERVICE, WASTE MANAGEMENT & LOGISTICS - CNI LITTLE
156 2ND STREET, SAN FRANCISCO, CA 94105
T. 415-522-5900



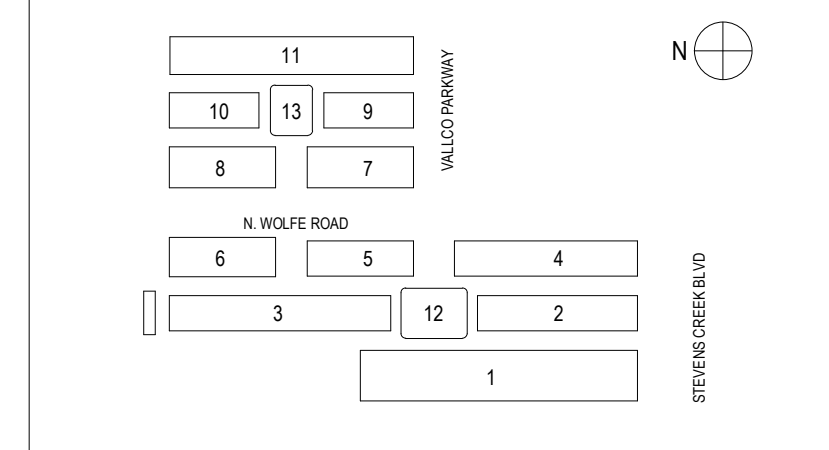
NOT FOR CONSTRUCTION

STAMP / SIGNATURE

DISCLAIMER
THE ARCHITECT / ENGINEER SHALL HAVE NO RESPONSIBILITY FOR ANY LIABILITY, LOSS, COST, DAMAGE OR EXPENSE ARISING FROM OR RELATING TO ANY USE OF THIS DOCUMENT FOR ANY PURPOSE OTHER THAN ITS INTENDED PURPOSE ON THIS PROJECT. THIS DOCUMENT IS TO BE CONSIDERED IN CONJUNCTION WITH ALL RELATED DOCUMENTATION. ANY DISCREPANCIES IDENTIFIED IN THIS DOCUMENT MUST BE REPORTED IMMEDIATELY TO THE ARCHITECT BEFORE PROCEEDING. CONTRACTORS MUST VERIFY ALL DIMENSIONS PRIOR TO PROCEEDING WITH ANY WORK. ONLY FIGURED DIMENSIONS ARE TO BE USED FOR VERIFICATION.

SB-35 MODIFICATION APPLICATION

REV	DESCRIPTION	DATE
REV-0	SB-35 DEVELOPMENT APPLICATION	03/27/2018
REV-1	SB-35 APPLICATION - CONFORM SET	08/15/2018
REV-2	SB-35 MODIFICATION APPLICATION	03/23/2022



KEY PLAN AND NORTH ARROW

ARCHITECT'S PROJECT NUMBER: 708.012

IF THIS DRAWING IS NOT 36"x48" IT IS A REDUCED PRINT.
REFER TO GRAPHIC SCALE.

SCALE: AS NOTED

FACADE MATERIAL BOARDS

SHEET TITLE:
P-0861

SHEET NUMBER:
RESIDENTIAL FACADE MATERIALS
NTS 1