

**NOTE**

--- FINISHED CEILING ABOVE THE FLOOR

■ "ATTIC SPACE" NOT CONDITIONED OR HABITABLE ABOVE AS PER CMC 19.08.030

# THE RISE

OWNER - VALCO PROPERTY OWNER LLC  
2800 EL CAMINO REAL, SUITE 410, PALO ALTO, CA 94306  
T. 650-344-1500

ARCHITECTURE - RAFAEL VINOLY ARCHITECTS  
375 PEARL STREET, 31ST FLOOR, NEW YORK, NY 10038  
T. 212-924-9000

ARCHITECTURE - RAFAEL VINOLY ARCHITECTS  
10123 N. WOLFE ROAD, CUPERTINO, CA 95014  
T. 408-627-7090

LANDSCAPE ARCHITECTURE - OLAN PARTNERSHIP LTD.  
1817 JOHN F. KENNEDY BLVD., SUITE 200, CAMPBELL, CA 95008  
T. 214-440-0030

CIVIL - SANDS CIVIL ENGINEERS SURVEYORS PLANNERS, INC.  
1100 S. WINCHESTER BLVD., SUITE 200, CAMPBELL, CA 95008  
T. 408-636-9000

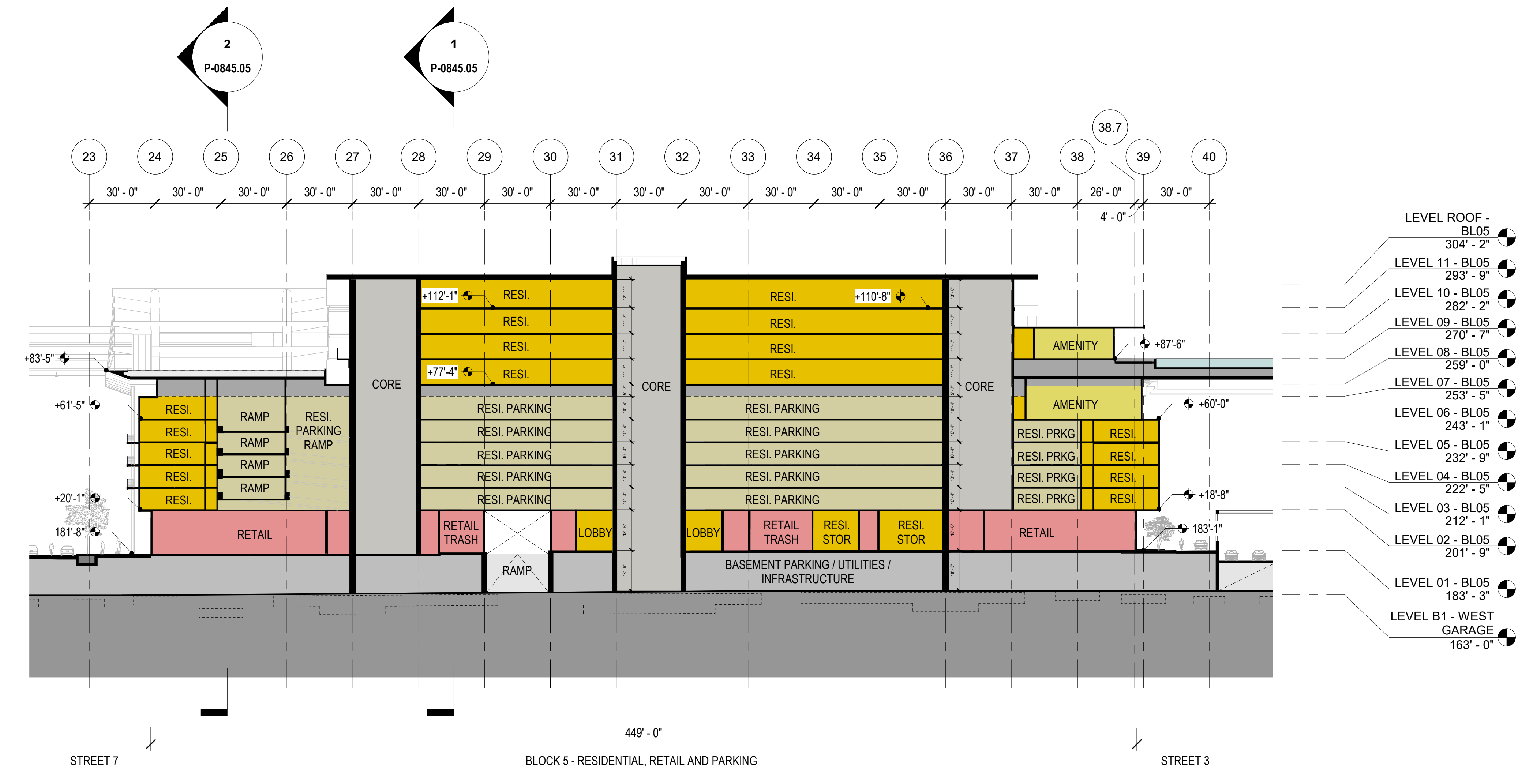
TRAFFIC - KIMLEY HORN AND ASSOCIATES, INC.  
100 W. SAN FERNANDO STREET, SUITE 250, SAN JOSE, CA 95113  
T. 650-350-7000

LIGHTING DESIGN - ONE LUX STUDIO  
158 WEST 20TH STREET, 10TH FLOOR, NEW YORK, NY 10011  
T. 212-201-6750

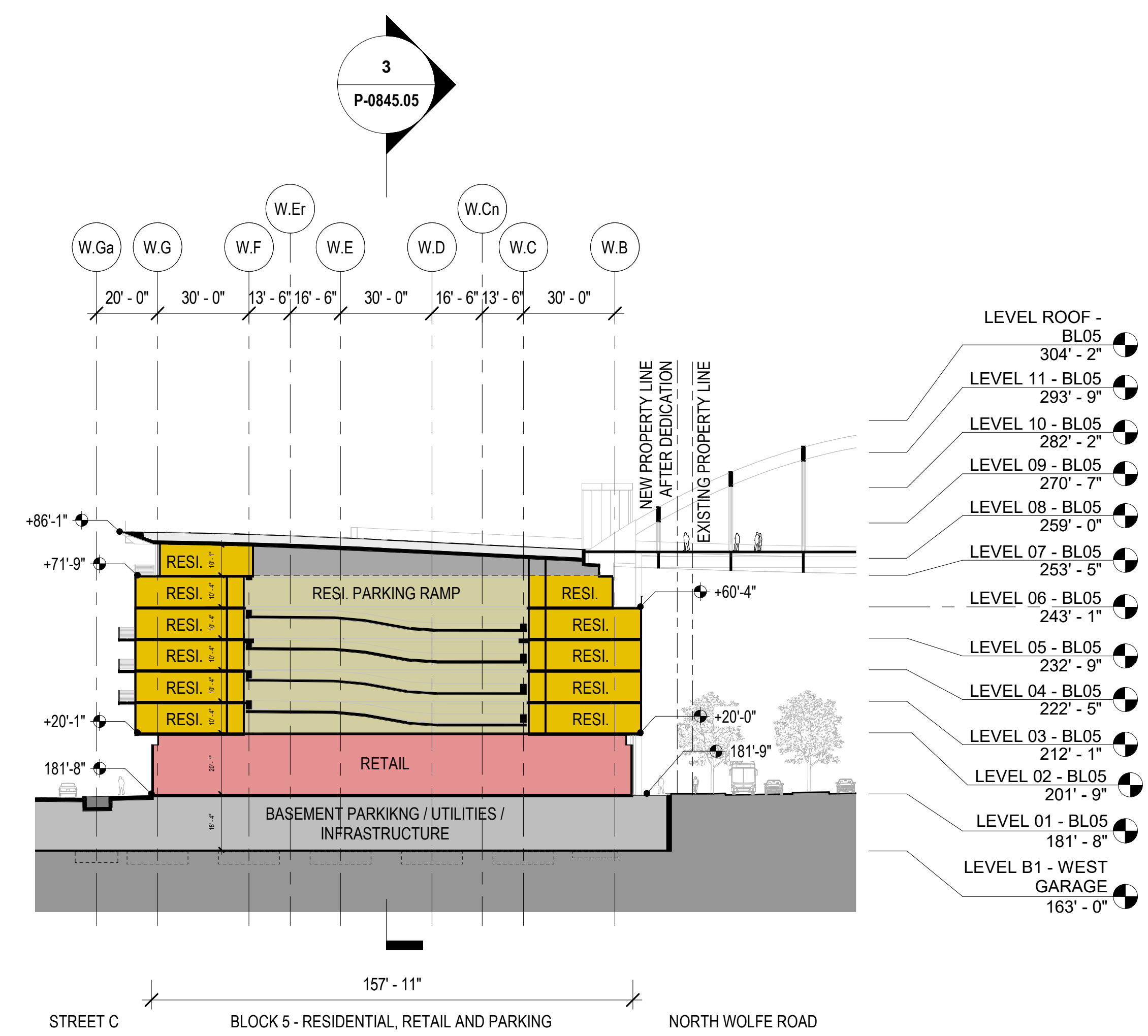
SIGNAGE & WAYFINDING - EXIT DESIGN  
725 N. 4TH STREET, PHILADELPHIA, PA 19123  
T. 215-681-1900

PARKING ENGINEERING - WATRY DESIGN, INC.  
2099 GATEWAY PLACE, SUITE 550, SAN JOSE, CA 95110  
T. 408-627-7090

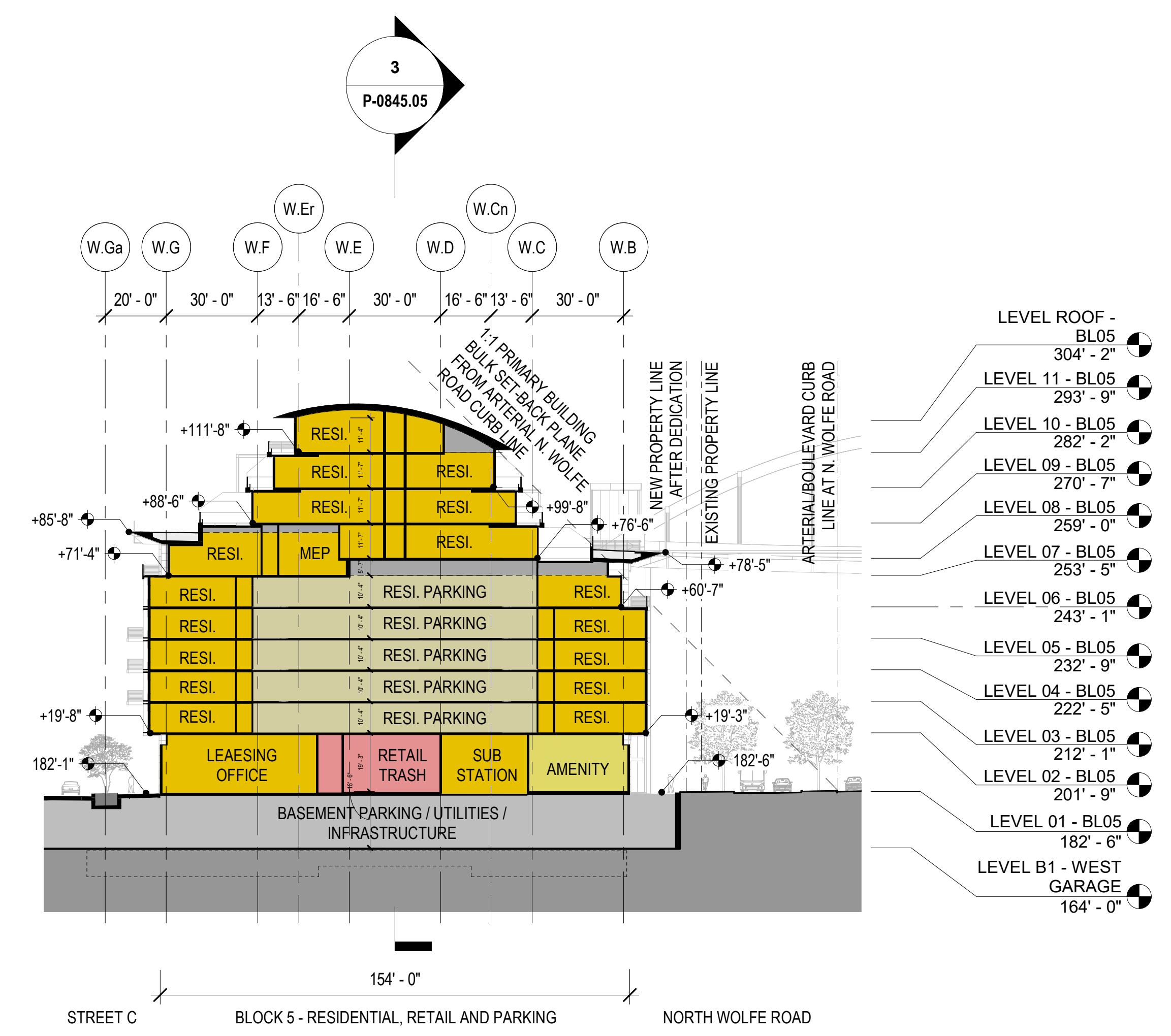
FOOD SERVICE, WASTE MANAGEMENT & LOGISTICS - CNU-LITTLE  
156 2ND STREET, SAN FRANCISCO, CA 94105  
T. 415-522-5900



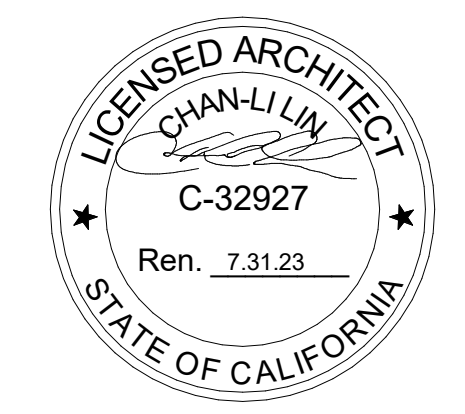
BLOCK 5 - LONGITUDINAL SECTION  
1/32" = 1'-0" 3



BLOCK 5 - CROSS SECTION  
1/32" = 1'-0" 2



BLOCK 5 - CROSS SECTION  
1/32" = 1'-0" 1



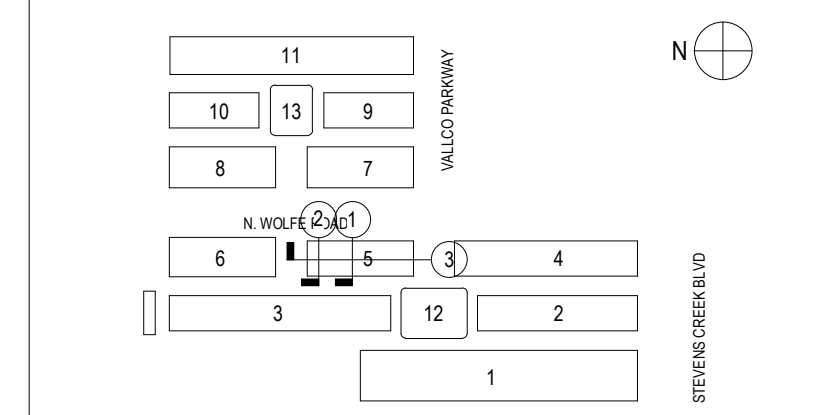
NOT FOR CONSTRUCTION

STAMP / SIGNATURE

DISCLAIMER  
THE ARCHITECT / ENGINEER SHALL HAVE NO RESPONSIBILITY FOR ANY LIABILITY, LOSS, COST, DAMAGE OR EXPENSE ARISING FROM OR RELATING TO ANY USE OF THIS DOCUMENT FOR ANY PURPOSE OTHER THAN ITS INTENDED PURPOSE ON THIS PROJECT. THIS DOCUMENT IS TO BE CONSIDERED IN CONJUNCTION WITH ALL RELATED DOCUMENTATION. ANY DISCREPANCIES IDENTIFIED IN THIS DOCUMENT MUST BE REPORTED IMMEDIATELY TO THE ARCHITECT BEFORE PROCEEDING. CONTRACTORS MUST VERIFY ALL DIMENSIONS PRIOR TO PROCEEDING WITH ANY WORK. ONLY FIGURED DIMENSIONS ARE TO BE USED FOR VERIFICATION.

### SB-35 MODIFICATION APPLICATION

REV	DESCRIPTION	DATE
REV 0	SB-35 APPLICATION - REVISION	08/06/2018
REV 1	SB-35 APPLICATION - CONFORM SET	09/15/2018
REV 2	SB-35 MODIFICATION APPLICATION	02/23/2022



ARCHITECTS PROJECT NUMBER 708.012

IF THIS DRAWING IS NOT 36"x48" IT IS A REDUCED PRINT. REFER TO GRAPHIC SCALE.

SCALE: AS NOTED

### ENLARGED SECTION - BLOCK 5

SHEET TITLE  
**P-0845.05**

SHEET NUMBER

© 2022 RAFAEL VINOLY ARCHITECTS P.C.