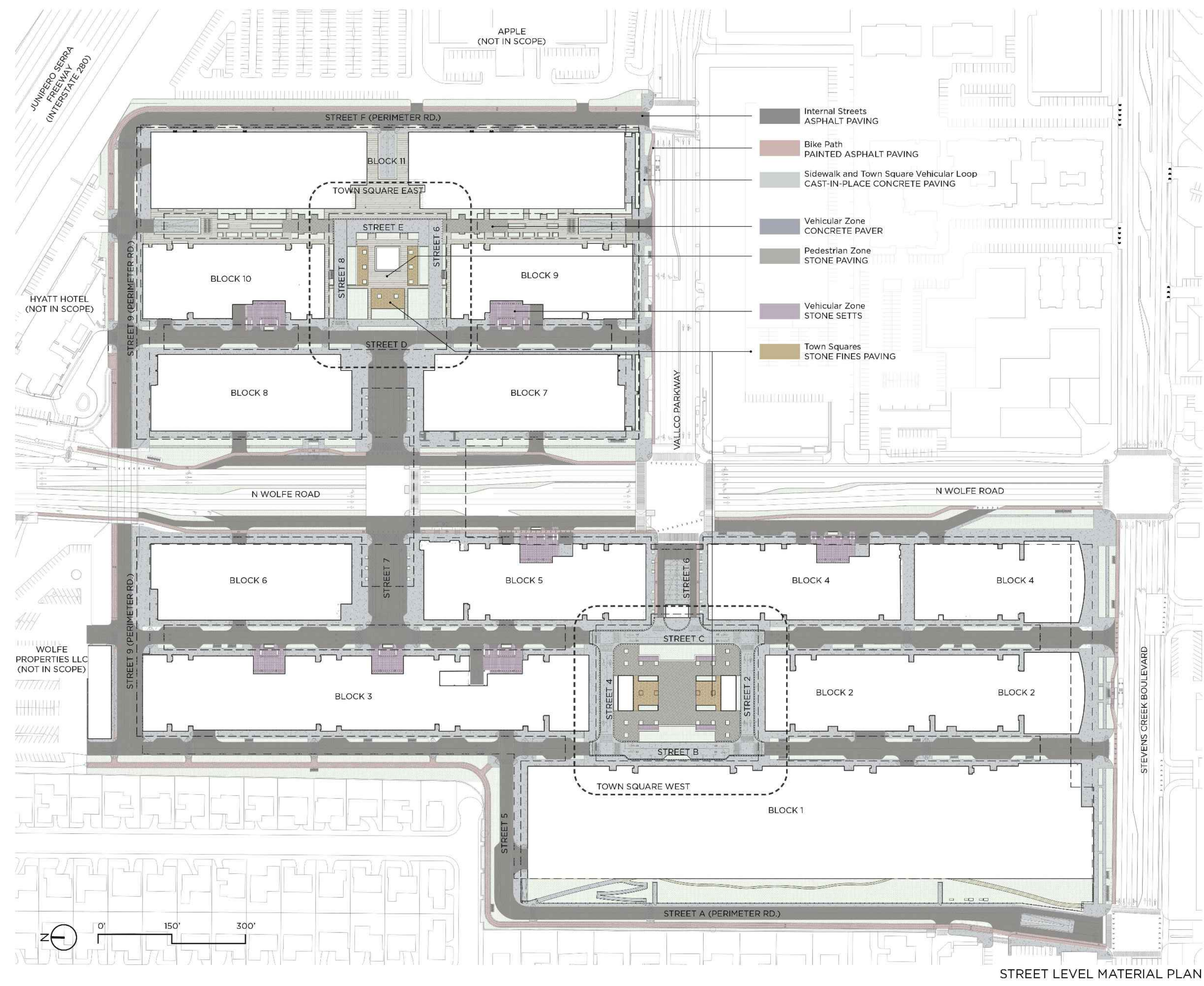


THE RISE

PAVING: STREET LEVEL



PAINTED ASPHALT PAVING/FLEXIBLE PAVEMENT



CAST IN PLACE CONCRETE



CONCRETE PAVER



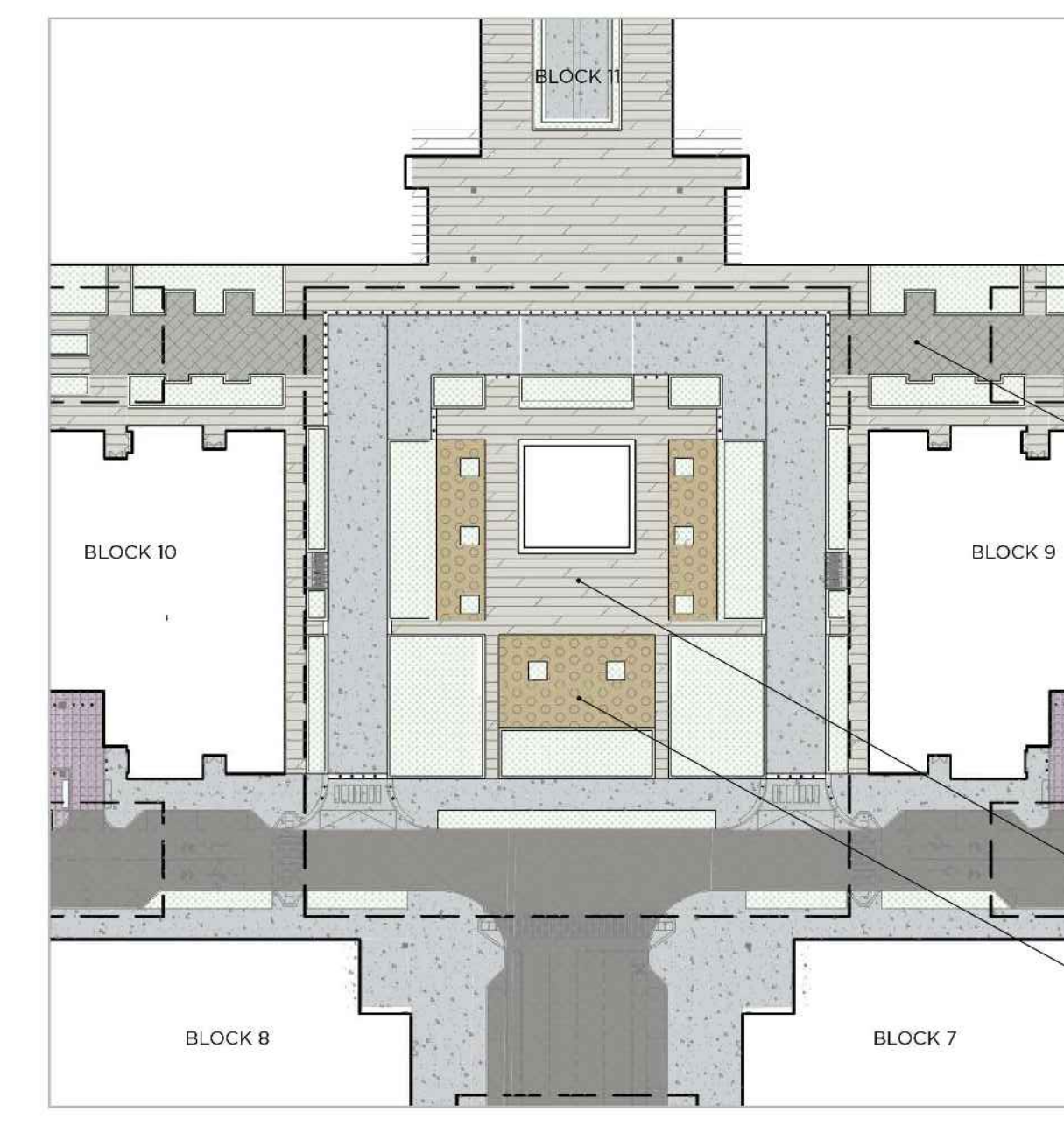
STONE PAVING



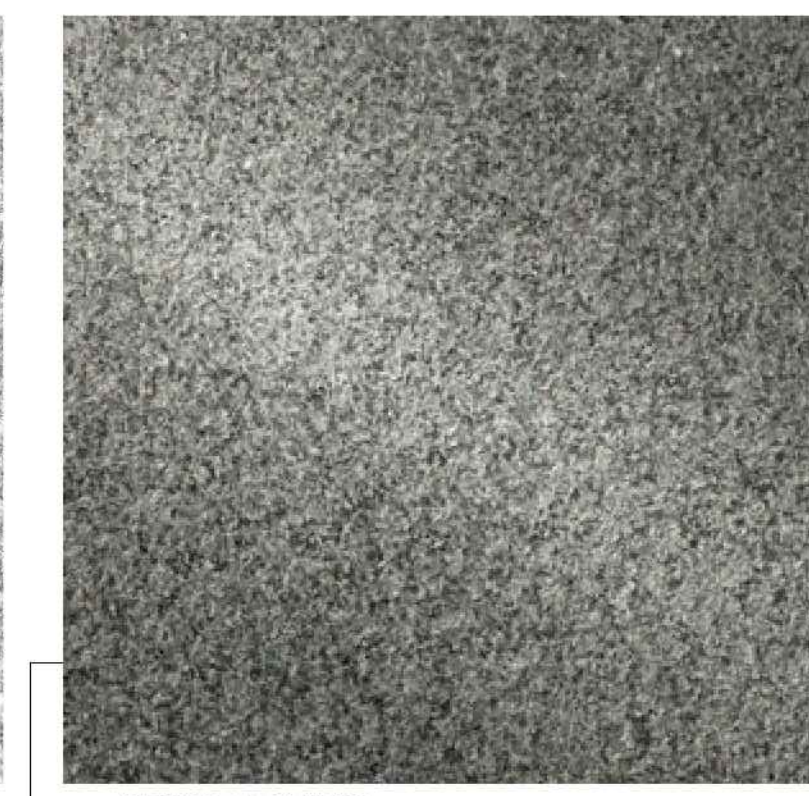
STONE SETTS



STONE FINES PAVING



CONCRETE PAVER
COLOR: GREY/BEIGE
FINISH: TEXTURED FINISH



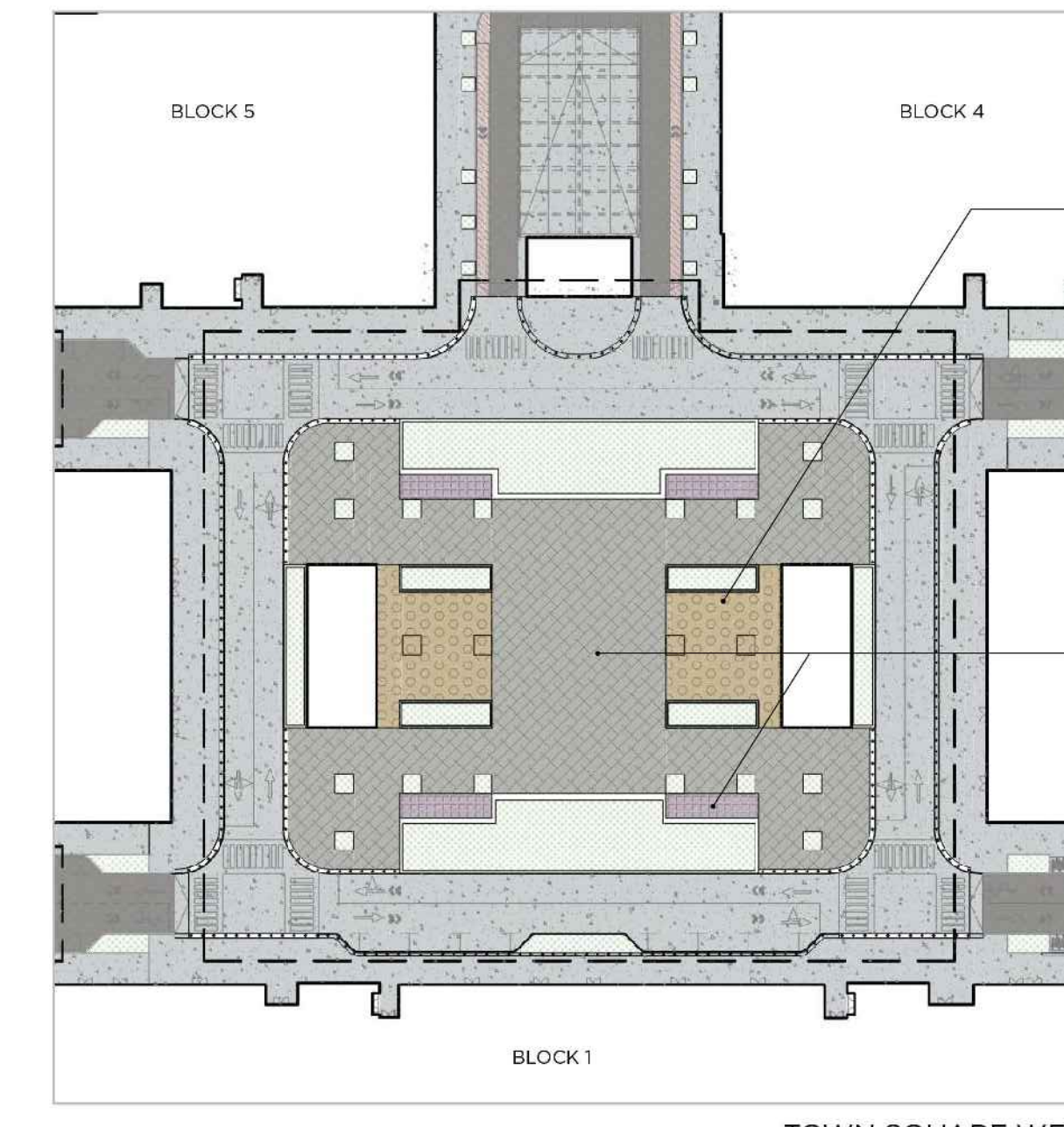
STONE PAVING
COLOR: DARK GREY
FINISH: TEXTURED FINISH



STONE FINES PAVING
COLOR: BEIGE/GOLDEN/BROWN



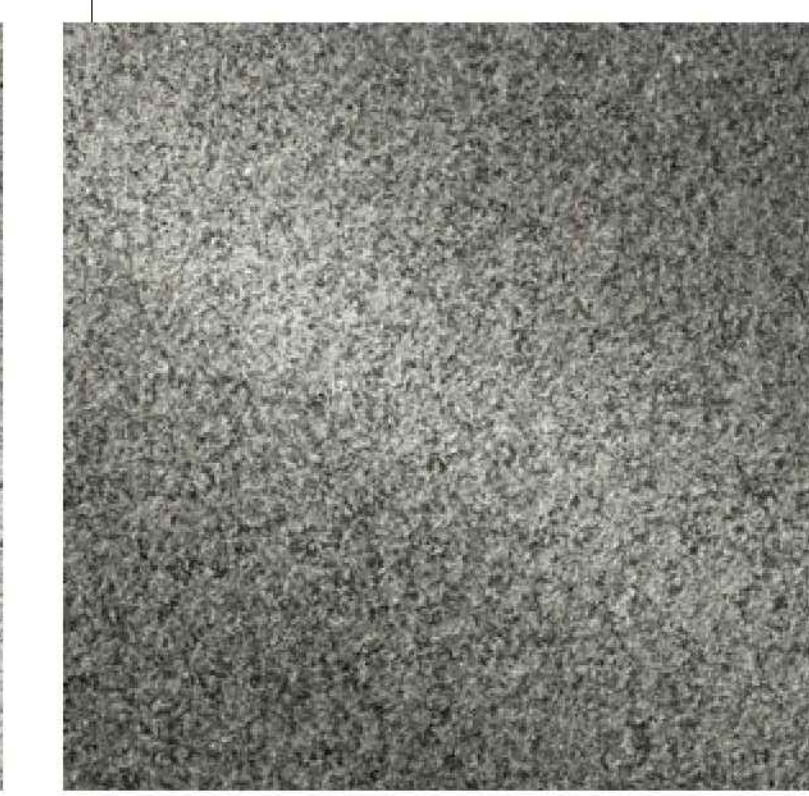
STONE PAVING
COLOR: LIGHT GRAY
FINISH: TEXTURED FINISH



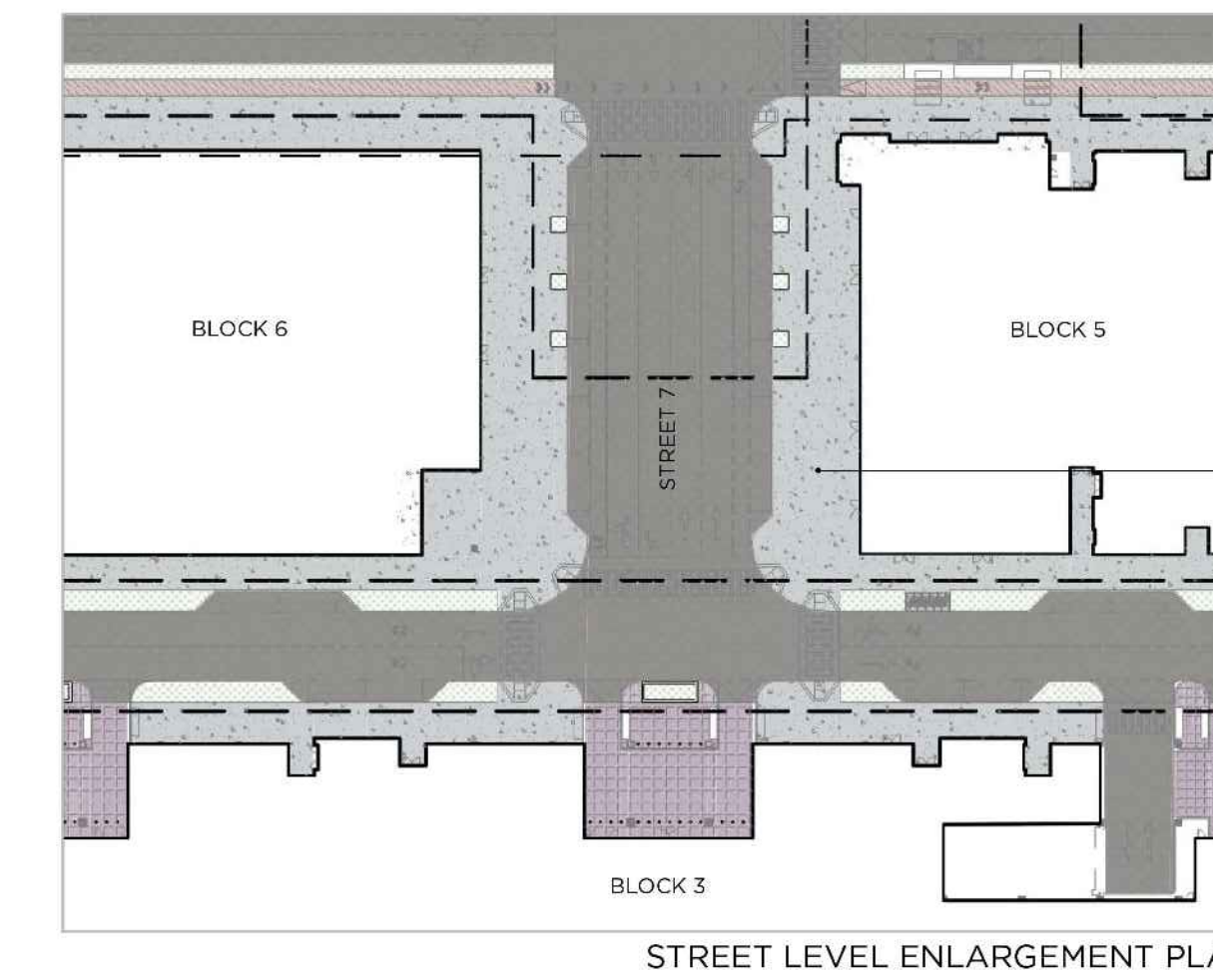
STONE FINES PAVING
COLOR: BEIGE/GOLDEN/BROWN



STONE PAVING/STONE SETTS
COLOR: LIGHT GRAY
FINISH: TEXTURED FINISH



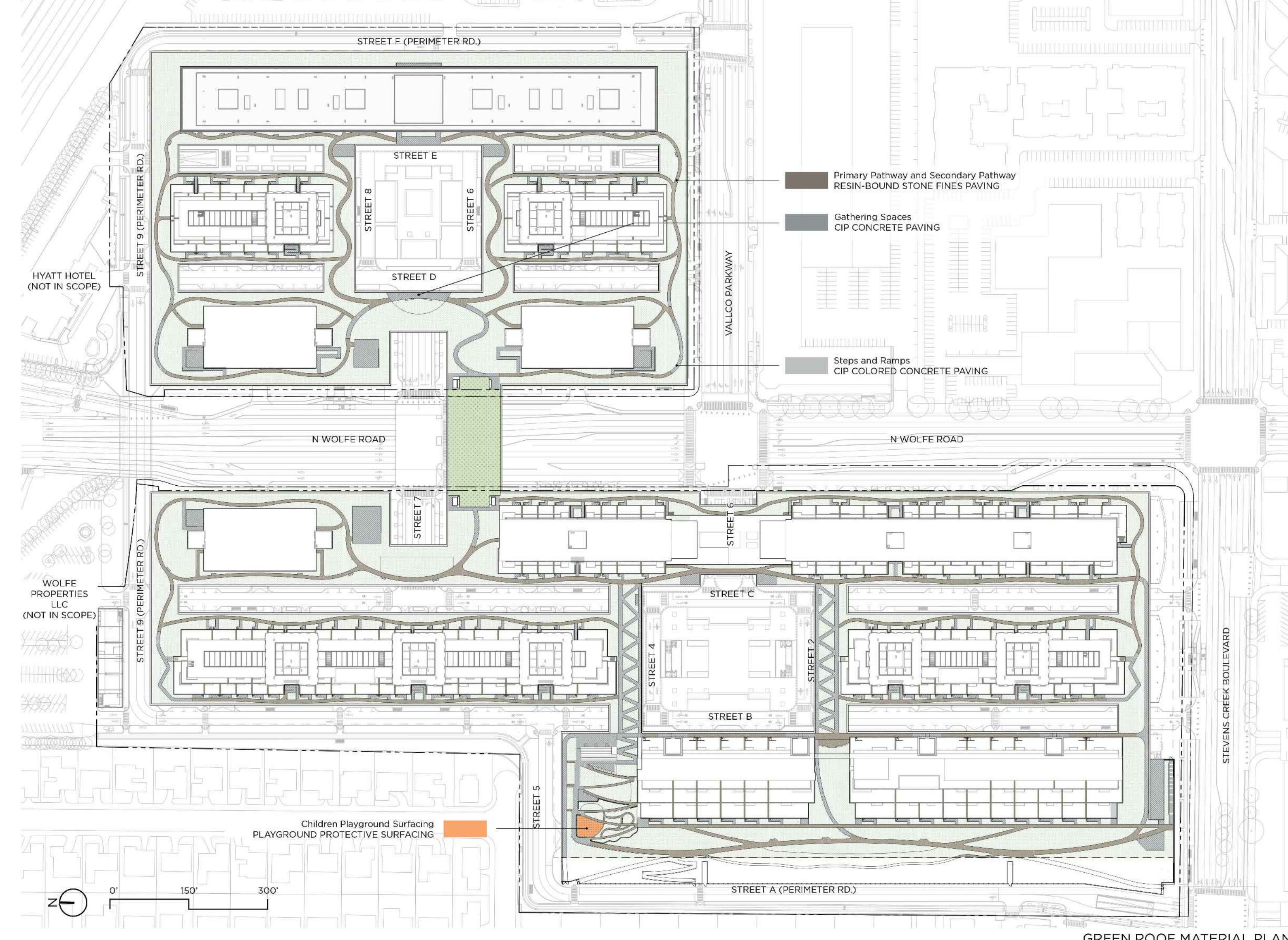
STONE PAVING/STONE SETTS
COLOR: DARK GREY
FINISH: TEXTURED FINISH



CIP CONCRETE
BROOM FINISH

THE RISE

PAVING: GREEN ROOF LEVEL



PRECEDENT IMAGES



RESIN-BOUND STONE FINES PAVING



PLAYGROUND PROTECTIVE SURFACING



RESIN-BOUND STONE FINES PAVING
COLOR: BEIGE/GOLDEN/BROWN



PLAYGROUND PROTECTIVE SURFACING
POURED-IN-PLACE RUBBER
COLOR: VARIES



CIP CONCRETE
EXPOSED AGGREGATE FINISH



CIP CONCRETE
BROOM FINISH



CIP CONCRETE
COLORED

THE RISE

OWNER - VALLO PROPERTY OWNER LLC
2600 EL CAMINO REAL, SUITE 410, PALO ALTO, CA 94306
T. 650.344.1500

ARCHITECTURE - RAFAEL VINOLY ARCHITECTS
375 PEARL STREET, 31ST FLOOR, NEW YORK, NY 10038
T. 212.924.5050

ARCHITECTURE - RAFAEL VINOLY ARCHITECTS
11223 N. WOLFE ROAD, CUPERTINO, CA 95014

LANDSCAPE ARCHITECTURE - OLIN PARTNERSHIP LTD.
1817 JOHN F. KENNEDY BLVD, SUITE 1000, PHILADELPHIA, PA 19103
T. 214.440.0030

CIVIL - SANDIS CIVIL ENGINEERS SURVEYORS PLANNERS, INC.
1700 S. WINCHESTER BLVD, SUITE 200, CAMPBELL, CA 95008
T. 408.636.0500

TRAFFIC - KIMLEY-HORN AND ASSOCIATES, INC.
100 W. SAN FERNANDO STREET, SUITE 230, SAN JOSE, CA 95113
T. 669.800.4130

LIGHTING DESIGN - ONE LUX STUDIO
136 WEST 29TH STREET, 10TH FLOOR, NEW YORK, NY 10001
T. 212.203.5750

SIGNAGE & WAYFINDING - EXIT DESIGN
725 N. 4TH STREET, PHILADELPHIA, PA 19123
T. 215.561.1550

PARKING ENGINEERING - WATRY DESIGN, INC.
2099 GATEWAY PLACE, SUITE 550, SAN JOSE, CA 95110
T. 408.392.7500

FOOD SERVICE, WASTE MANAGEMENT & LOGISTICS - CON-LITTLE
156 2ND STREET, SAN FRANCISCO, CA 94105
T. 415.922.5900



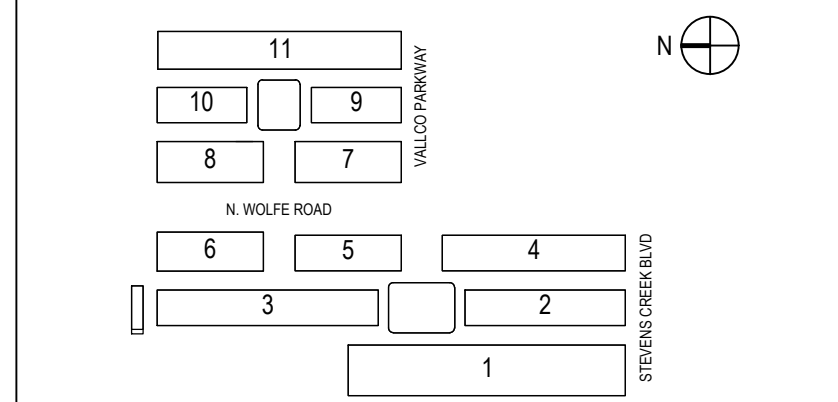
NOT FOR CONSTRUCTION

STAMP / SIGNATURE

DISCLAIMER
THE ARCHITECT / ENGINEER SHALL HAVE NO RESPONSIBILITY FOR ANY LIABILITY, LOSS, COST, DAMAGE OR EXPENSE ARISING FROM OR RELATING TO ANY USE OF THIS DOCUMENT FOR ANY PURPOSE OTHER THAN ITS INTENDED PURPOSE ON THIS PROJECT. THIS DOCUMENT IS TO BE CONSIDERED IN CONJUNCTION WITH ALL RELATED DOCUMENTATION. ANY DISCREPANCIES IDENTIFIED IN THIS DOCUMENT MUST BE REPORTED IMMEDIATELY TO THE ARCHITECT BEFORE PROCEEDING. CONTRACTORS MUST VERIFY ALL DIMENSIONS PRIOR TO PROCEEDING WITH ANY WORK. ONLY FIGURED DIMENSIONS ARE TO BE USED FOR VERIFICATION.

SB-35 MODIFICATION APPLICATION

REV	DESCRIPTION	DATE
REV-0	SB-35 APPLICATION - REVISIONS	08/22/2018
REV-1	SB-35 APPLICATION CONFORM SET	08/15/2018
REV-2	SB-35 MODIFICATION APPLICATION	02/23/2022



ARCHITECTS PROJECT NUMBER 708.012

IF THIS DRAWING IS NOT 36"X48" IT IS A REDUCED PRINT. REFER TO GRAPHIC SCALE

MATERIALS BOARD

SHEET TITLE
P-0612

SHEET NUMBER
© 2022 RAFAEL VINOLY ARCHITECTS PC