

THE RISE

OWNER - VALICO PROPERTY OWNER LLC
 2600 EL CAMINO REAL, SUITE 410, PALO ALTO, CA 94306
 T. 650-344-1920

ARCHITECTURE - RAFAEL VINOLY ARCHITECTS
 375 PEARL STREET, 31ST FLOOR, NEW YORK, NY 10038
 T. 212-924-0500

ARCHITECTURE - RAFAEL VINOLY ARCHITECTS
 19123 N. WOLFE ROAD, CUPERTINO, CA 95014
 T. 408-627-7990

LANDSCAPE ARCHITECTURE - OLIN PARTNERSHIP LTD.
 181 JOHN F. KENNEDY BLVD, SUITE 1900, PHILADELPHIA, PA 19103
 T. 215-440-0030

CIVIL - SANDIS CIVIL ENGINEERS SURVEYORS PLANNERS, INC.
 1700 S. WINCHESTER BLVD, SUITE 200, CAMPBELL, CA 95008
 T. 408-636-0900

TRAFFIC - KIMLEY-HORN AND ASSOCIATES, INC.
 1001 W. SAN FERNANDO STREET, SUITE 230, SAN JOSE, CA 95113
 T. 669-800-4130

LIGHTING DESIGN - ONE LUX STUDIO
 156 WEST 29TH STREET, 10TH FLOOR, NEW YORK, NY 10011
 T. 212-921-5750

SIGNAGE & WAYFINDING - EXIT DESIGN
 725 N. 4TH STREET, PHILADELPHIA, PA 19123
 T. 215-581-1150

PARKING ENGINEERING - WATRY DESIGN, INC.
 2099 GATEWAY PLACE, SUITE 550, SAN JOSE, CA 95110
 T. 408-392-7990

FOOD SERVICE, WASTE MANAGEMENT & LOGISTICS - CIN-LITTLE
 156 2ND STREET, SAN FRANCISCO, CA 94105
 T. 415-922-9900

- LEGEND**
- PROPERTY LINE
 - PROPERTY LINE AFTER DEDICATION
 - ▭ STRUCTURE
 - ▭ PAVING
 - ▭ POOL
 - ▭ FENCE
 - ▭ GROUND COVER
 - ▭ LAWN
 - ▭ RESIDENTIAL GREEN ROOF
 - ▭ OFFICE GREEN ROOF
 - ▭ RESIDENTIAL YARD AND GATHERING SPACE

NOTES:

1. REFERENCE SHEET P-007 FOR PLANTING PALETTE

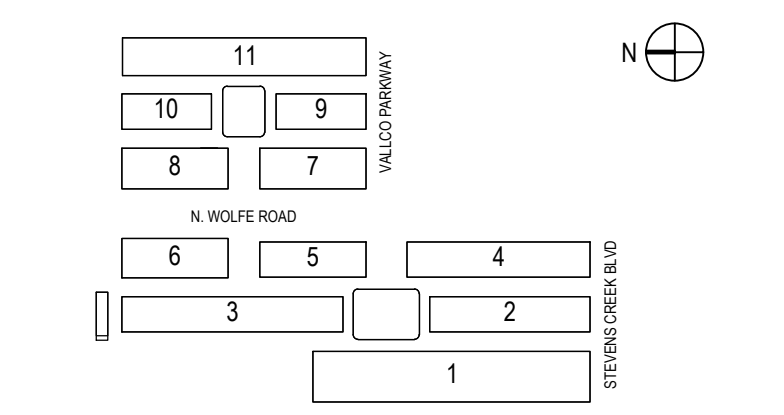


NOT FOR CONSTRUCTION

DISCLAIMER
 THE ARCHITECT/ENGINEER SHALL HAVE NO RESPONSIBILITY FOR ANY LIABILITY, LOSS, COST, DAMAGE OR EXPENSE ARISING FROM OR RELATING TO ANY USE OF THIS DOCUMENT FOR ANY PURPOSE OTHER THAN ITS INTENDED PURPOSE ON THIS PROJECT. THIS DOCUMENT IS TO BE CONSIDERED IN CONJUNCTION WITH ALL RELATED DOCUMENTATION. ANY DISCREPANCIES IDENTIFIED IN THIS DOCUMENT MUST BE REPORTED IMMEDIATELY TO THE ARCHITECT BEFORE PROCEEDING. CONTRACTORS MUST VERIFY ALL DIMENSIONS PRIOR TO PROCEEDING WITH ANY WORK. ONLY FIGURED DIMENSIONS ARE TO BE USED FOR VERIFICATION.

SB-35 MODIFICATION APPLICATION

REV	DESCRIPTION	DATE
REV-0	SB-35 DEVELOPMENT APPLICATION	03/27/2018
REV-1	SB-35 APPLICATION - REVISIONS	07/31/2018
REV-2	SB-35 APPLICATION - REVISIONS	08/22/2018
REV-3	SB-35 APPLICATION CONFORM SET	08/15/2018
REV-4	SB-35 MODIFICATION APPLICATION	03/23/2022



KEY PLAN AND NORTH ARROW
 ARCHITECTS PROJECT NUMBER: 708.012

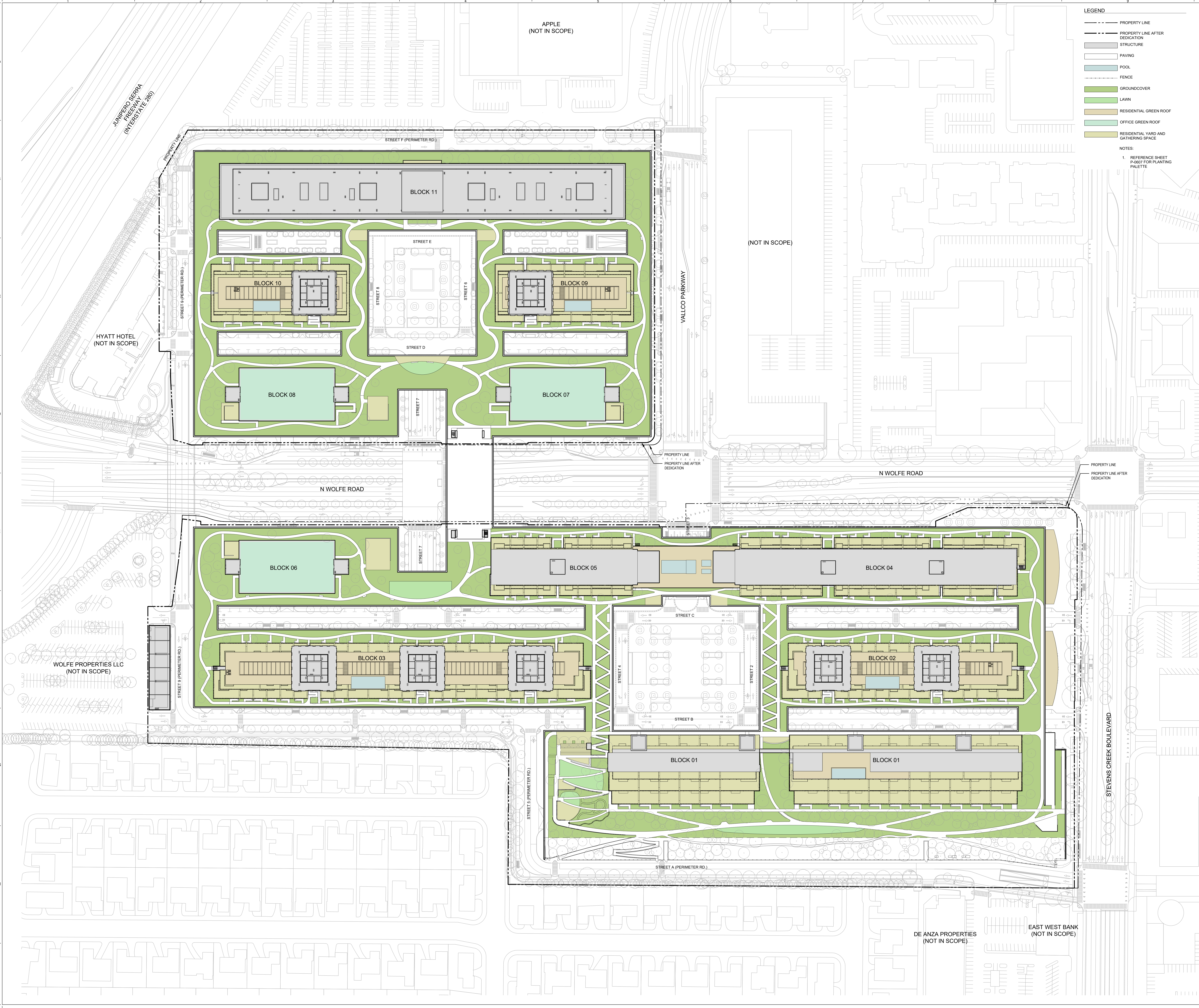
IF THIS DRAWING IS NOT 36"x48" IT IS A REDUCED PRINT. REFER TO GRAPHIC SCALE.

SCALE: 1/8"=1'-0"

PLANTING PLAN GREEN ROOF LEVEL - GROUND COVERS

SHEET TITLE:
P-0606

SHEET NUMBER:
 © 2022 RAFAEL VINOLY ARCHITECTS PC



STEVENS CREEK BOULEVARD

VALLEJO PARKWAY

JUNIPERO SERRA
 FREEWAY
 (INTERSTATE 205)

PROPERTY LINE

STREET D (PERIMETER RD)

STREET D (PERIMETER RD)

STREET D (PERIMETER RD)

STREET D (PERIMETER RD)

PROPERTY LINE

PROPERTY LINE AFTER DEDICATION

STREET C

STREET B

STREET A

STREET E

STREET D

STREET F

STREET G

STREET H

STREET I

STREET J

STREET K

STREET L

STREET M

STREET N

STREET O

STREET P

STREET Q

STREET R

STREET S

STREET T

HYATT HOTEL
 (NOT IN SCOPE)

WOLFE PROPERTIES LLC
 (NOT IN SCOPE)

APPLE
 (NOT IN SCOPE)

(NOT IN SCOPE)

DE ANZA PROPERTIES
 (NOT IN SCOPE)

EAST WEST BANK
 (NOT IN SCOPE)