

OWNER - VALLCO PROPERTY OWNER LLC
 965 PAGE MILL ROAD, PALO ALTO, CA 94304
 T. 650-344-1900

ARCHITECTURE - RAFAEL VINOLY ARCHITECTS
 50 VANDAM STREET, NEW YORK, NY 10013
 T. 212-924-6500

ARCHITECTURE - OLIN PARTNERSHIP LTD.
 190 S. INDEPENDENCE MALL, W. SUITE 1103, PHILADELPHIA, PA 19106
 T. 215-440-0030

CIVIL - SANDIS CIVIL ENGINEERS SURVEYORS PLANNERS, INC.
 1700 S. WINCHESTER BLVD., SUITE 200, CAMPBELL, CA 95008
 T. 408-636-0500

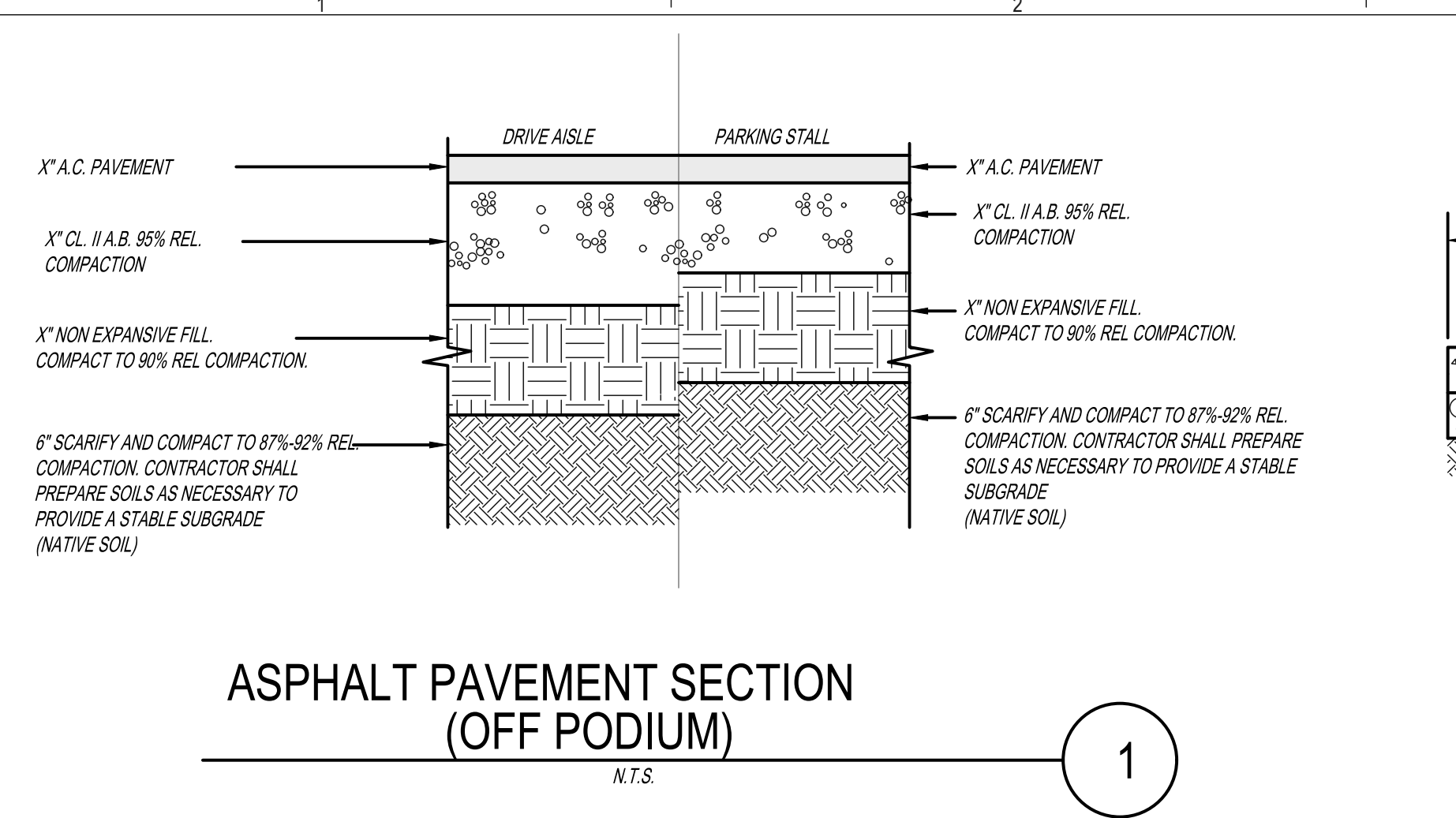
TRANSPORTATION ENGINEERING - ARUP NORTH AMERICA, LTD.
 580 MISSION STREET SUITE 700 SAN FRANCISCO CA 94105
 T. 415-957-9445

LIGHTING - ONE LUX STUDIO
 158 WEST 20TH STREET, 10TH FLOOR, NEW YORK, NY 10011
 T. 212-501-5790

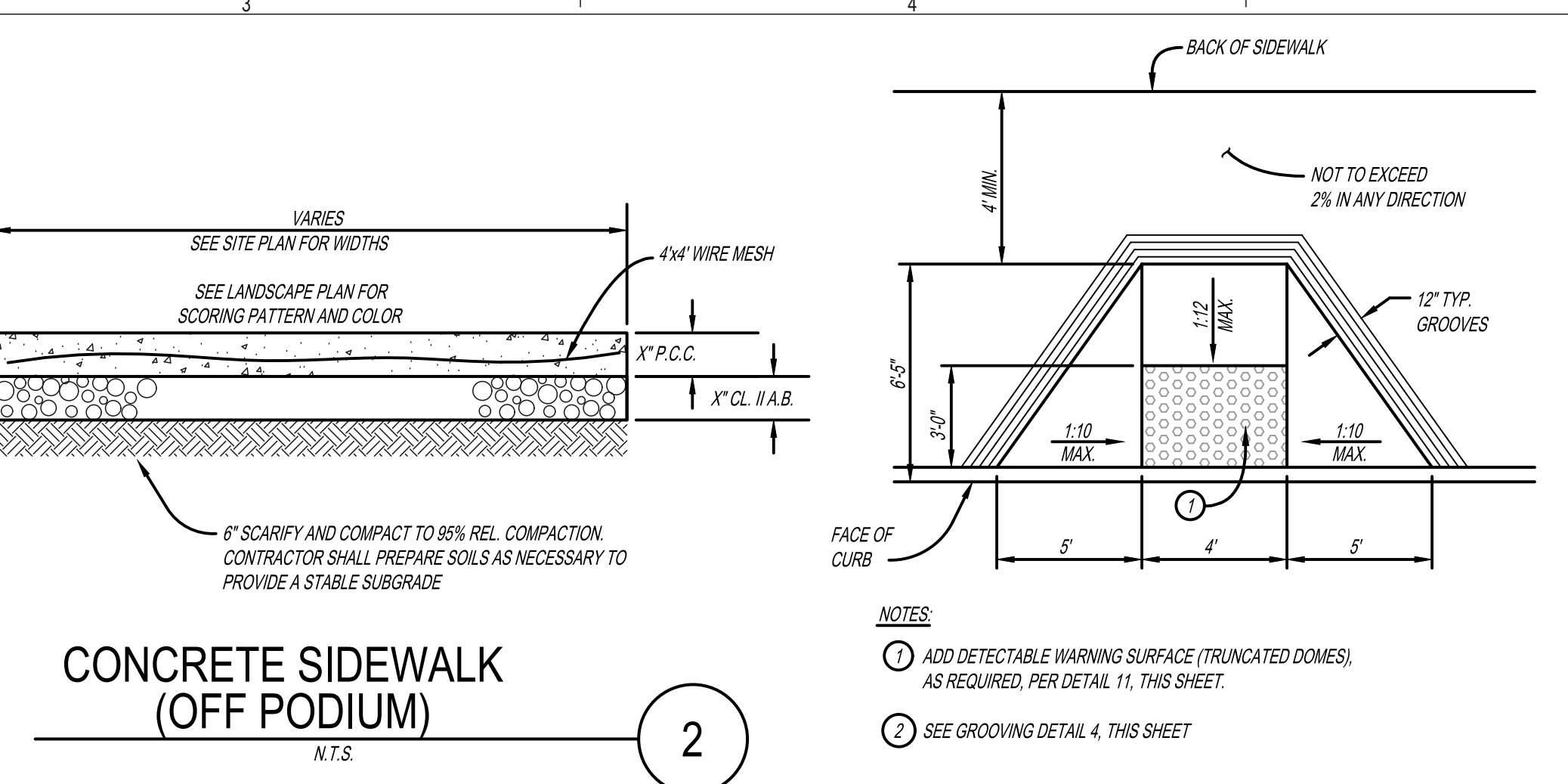
SIGNAGE - EXIT
 1617 JFK BLVD, SUITE 1665, PHILADELPHIA, PA 19103
 T. 215-681-1950

PARKING ENGINEERING - WATRY DESIGN, INC.
 2099 GATEWAY PLACE, SUITE 550, SAN JOSE, CA 95110
 T. 408-392-7900

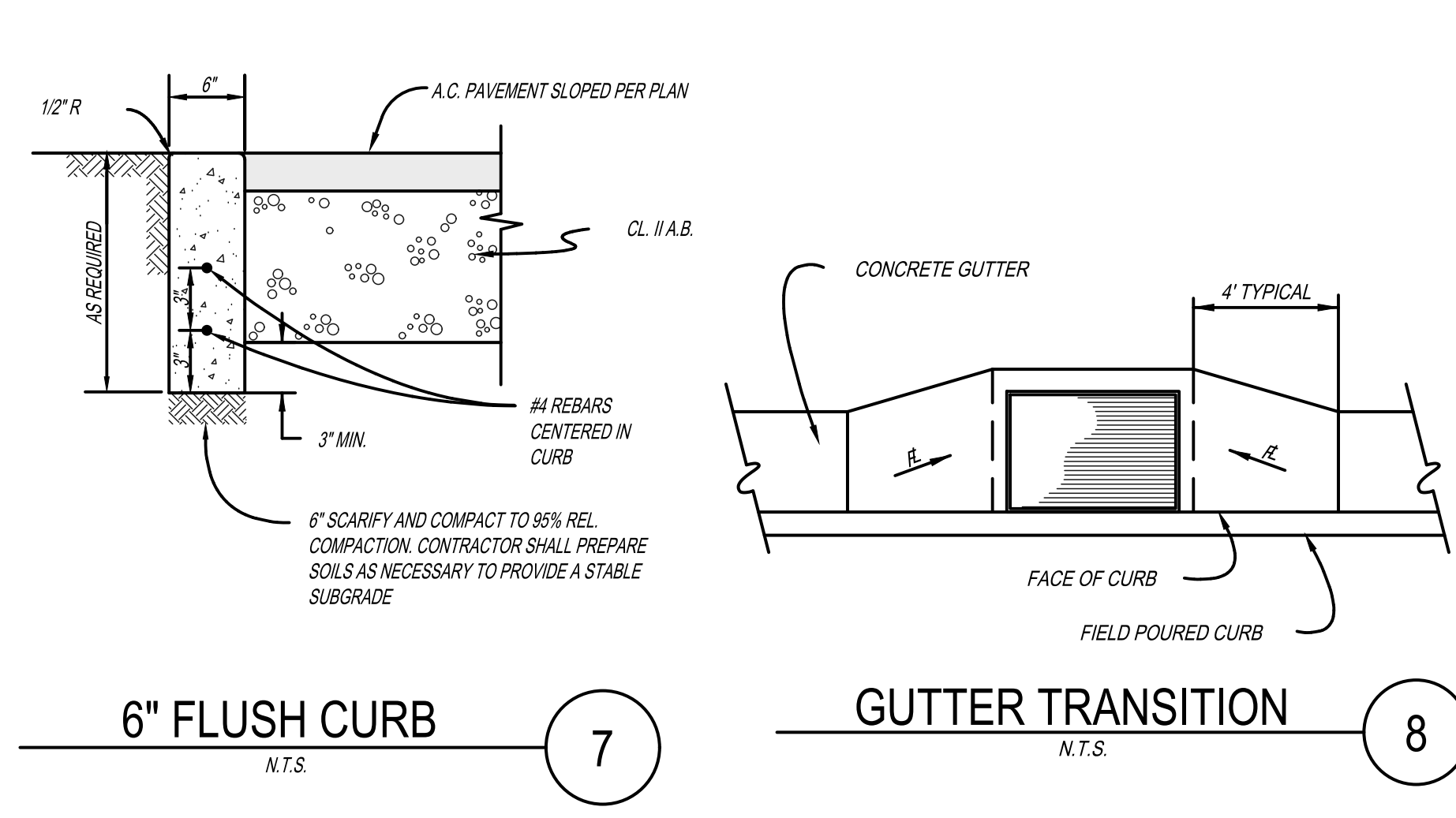
WASTE MANAGEMENT - CN/LITTLE INTERNATIONAL
 535 NORTH BRAN BLVD, STE 710 GLENDALE, CA 92103
 T. 626-441-7700



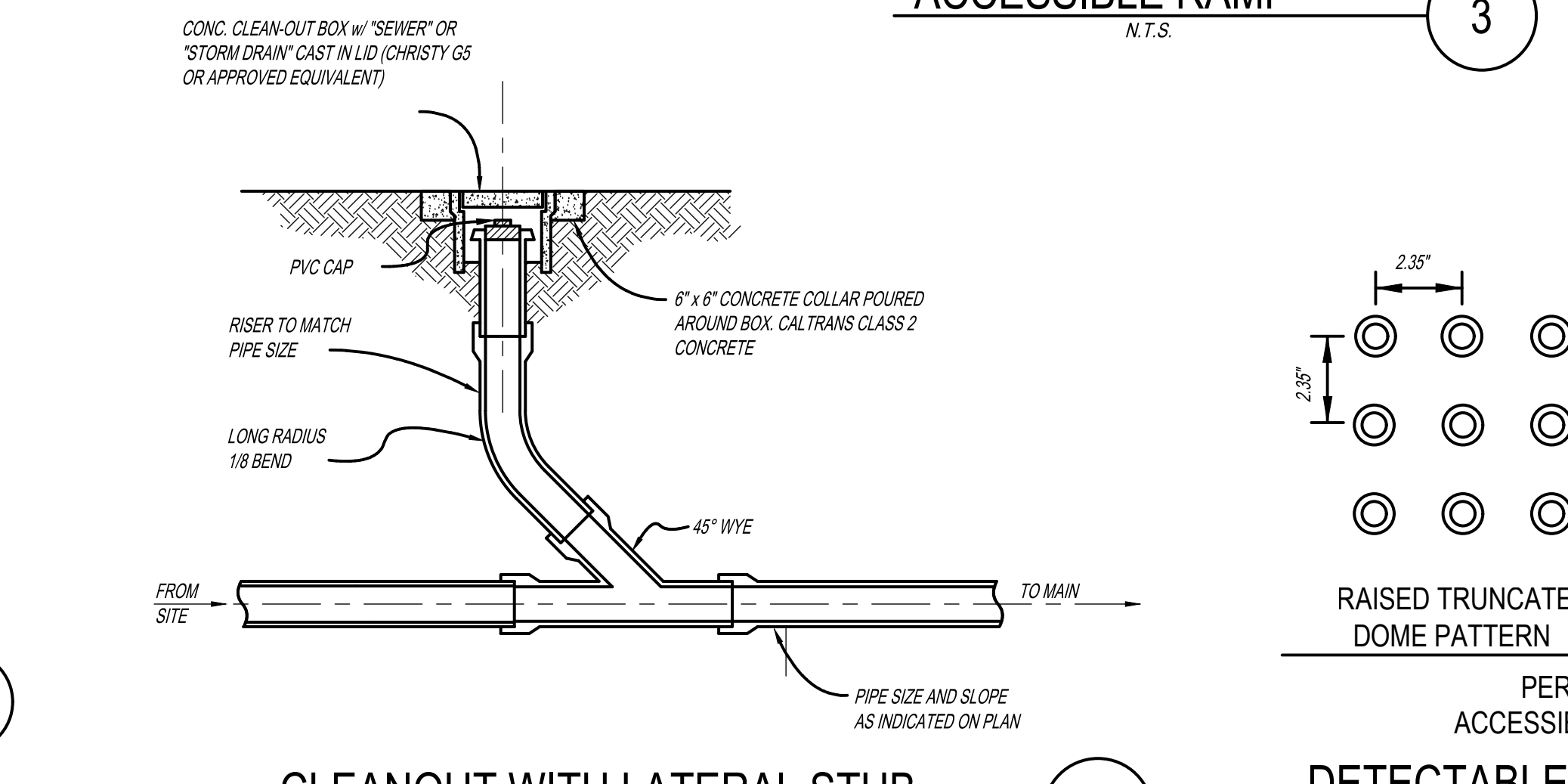
ASPHALT PAVEMENT SECTION (OFF PODIUM)
N.T.S.



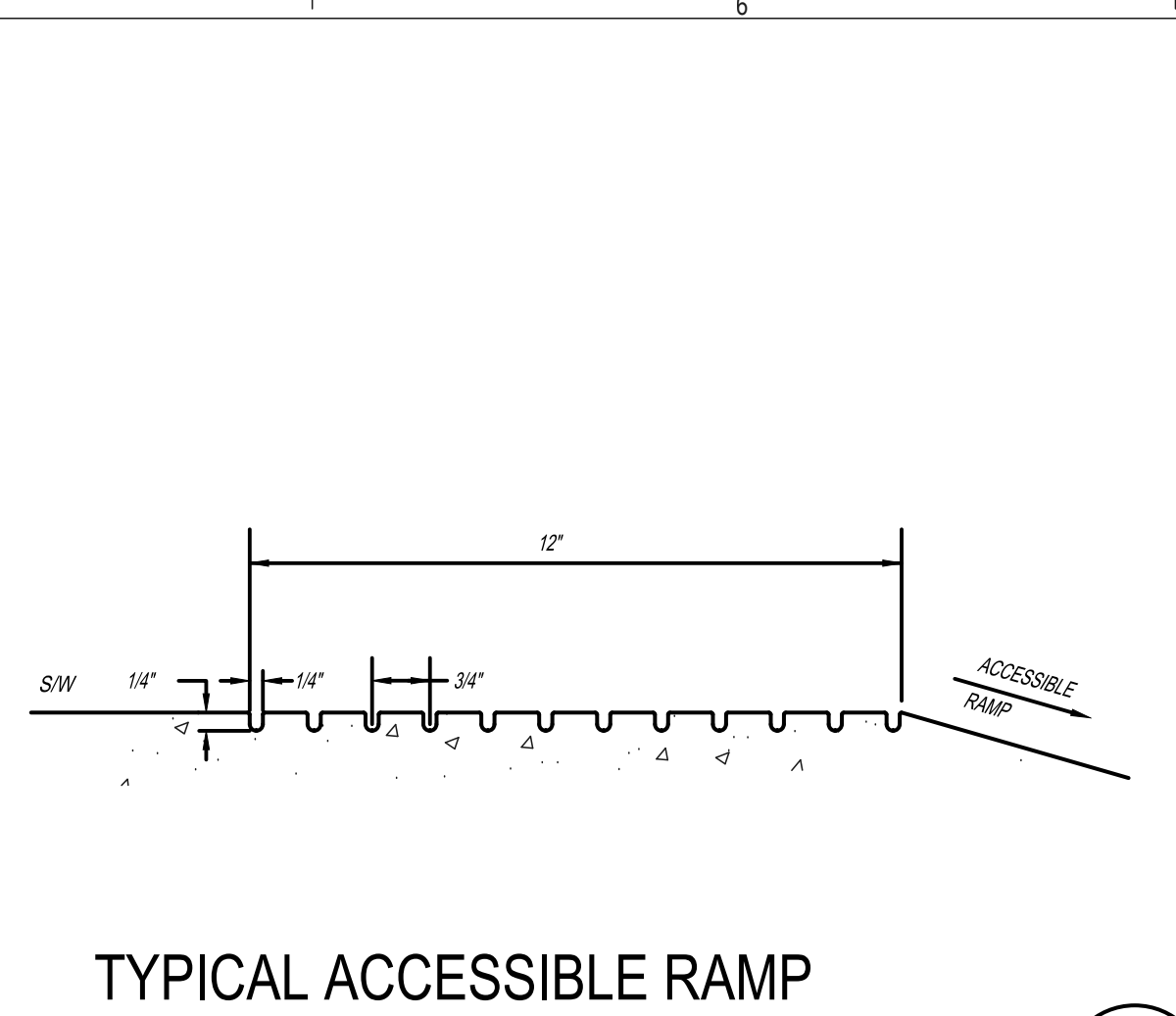
CONCRETE SIDEWALK (OFF PODIUM)
N.T.S.



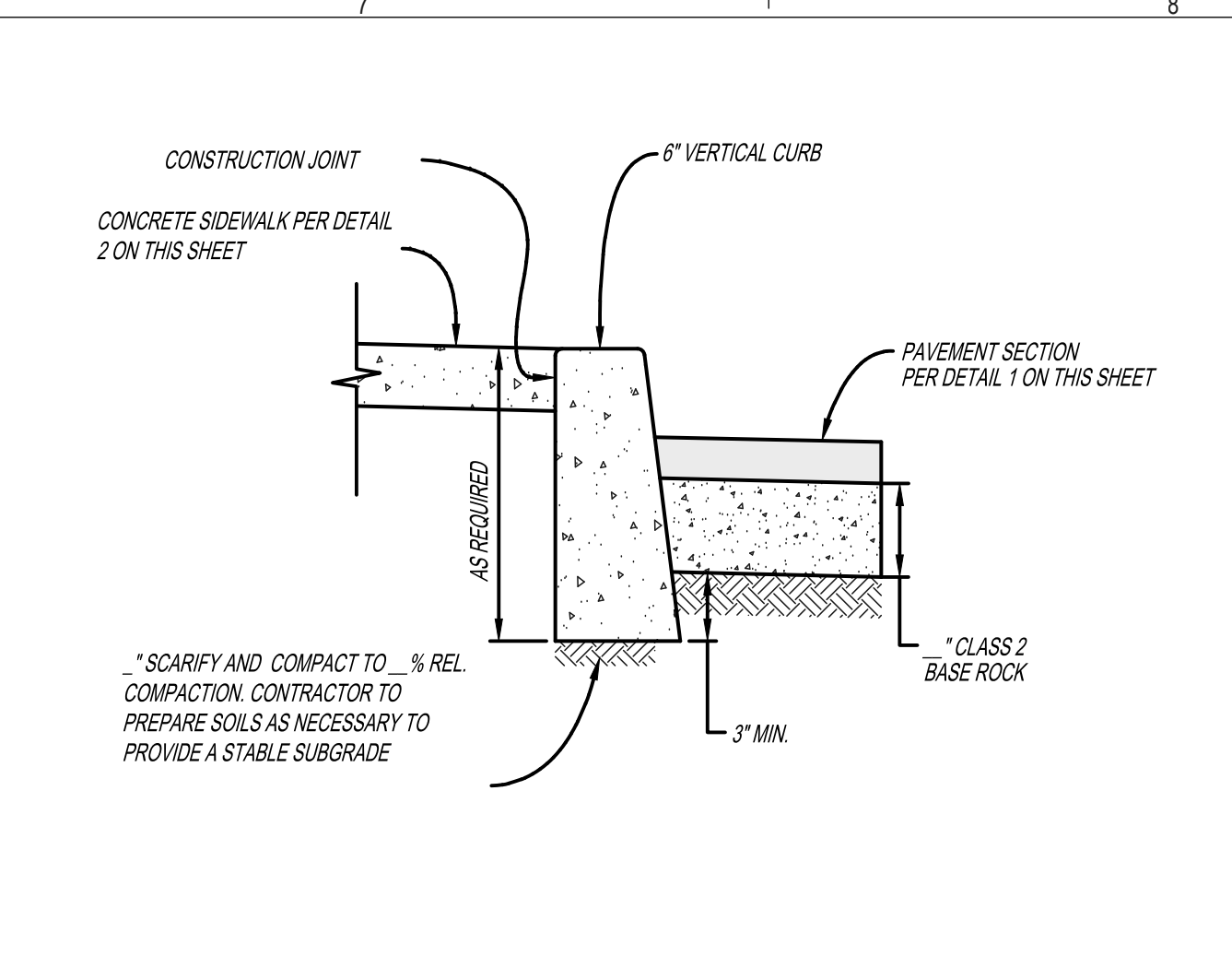
6\"/>



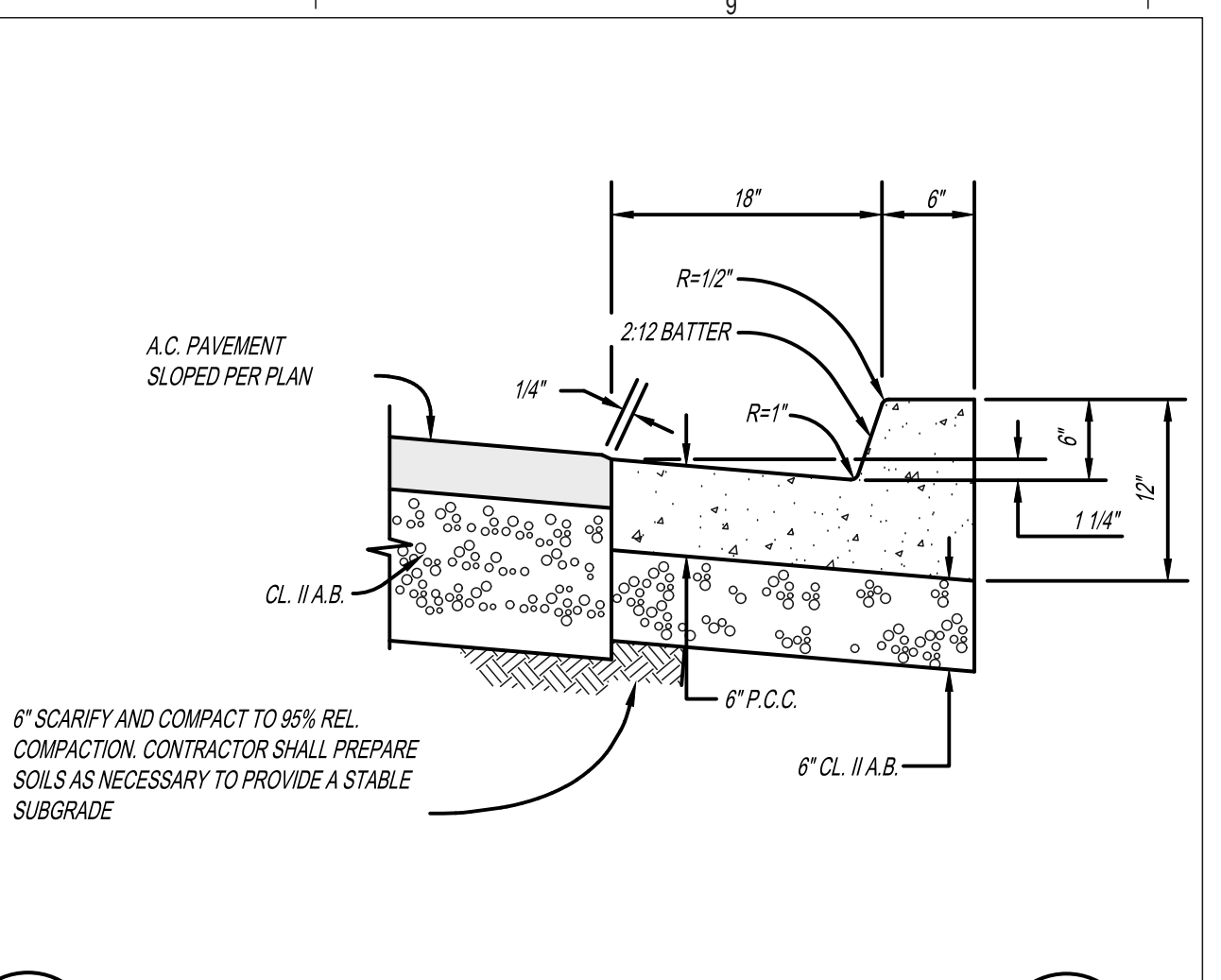
ACCESSIBLE RAMP
N.T.S.



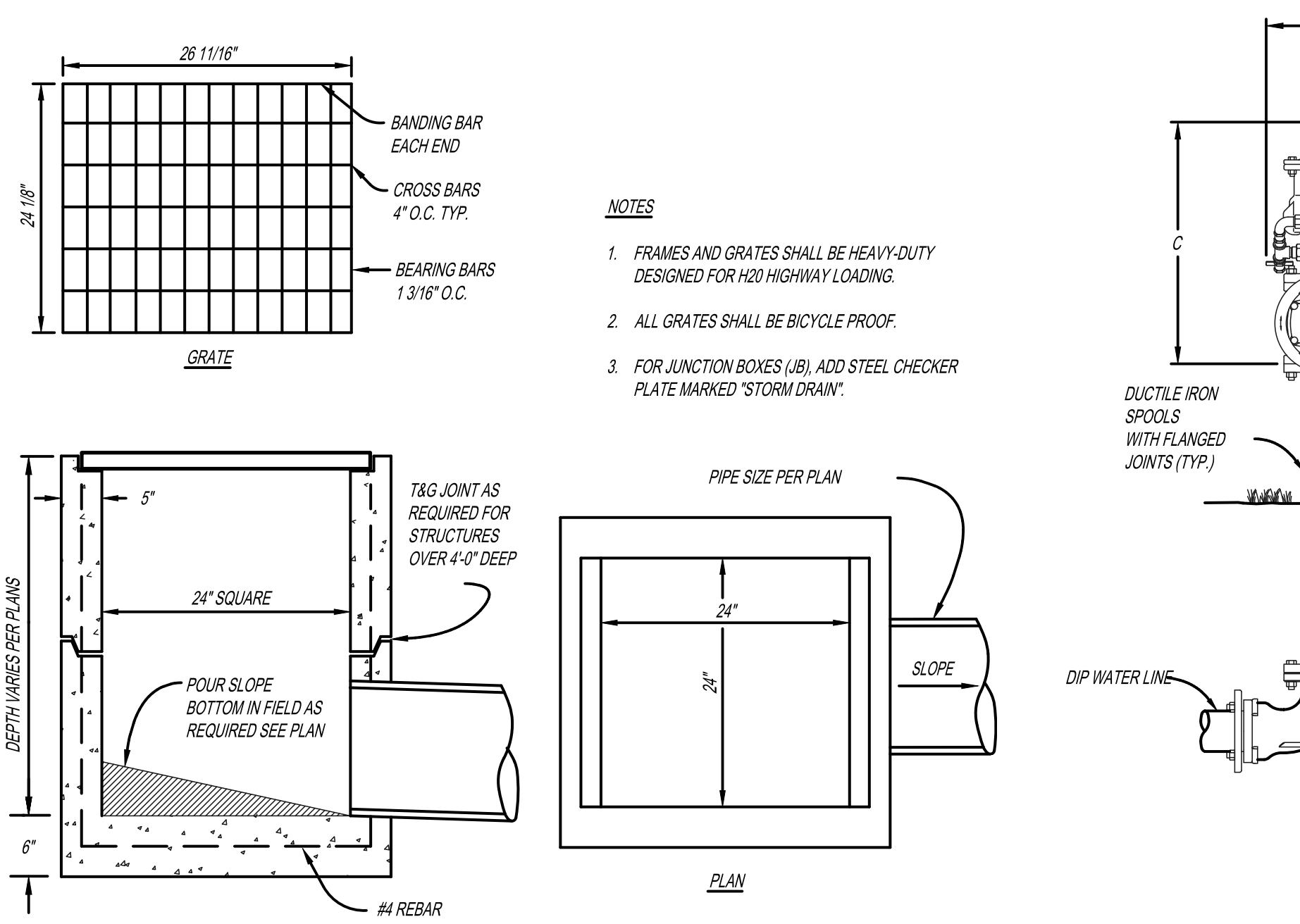
TYPICAL ACCESSIBLE RAMP GROOVING DETAIL
N.T.S.



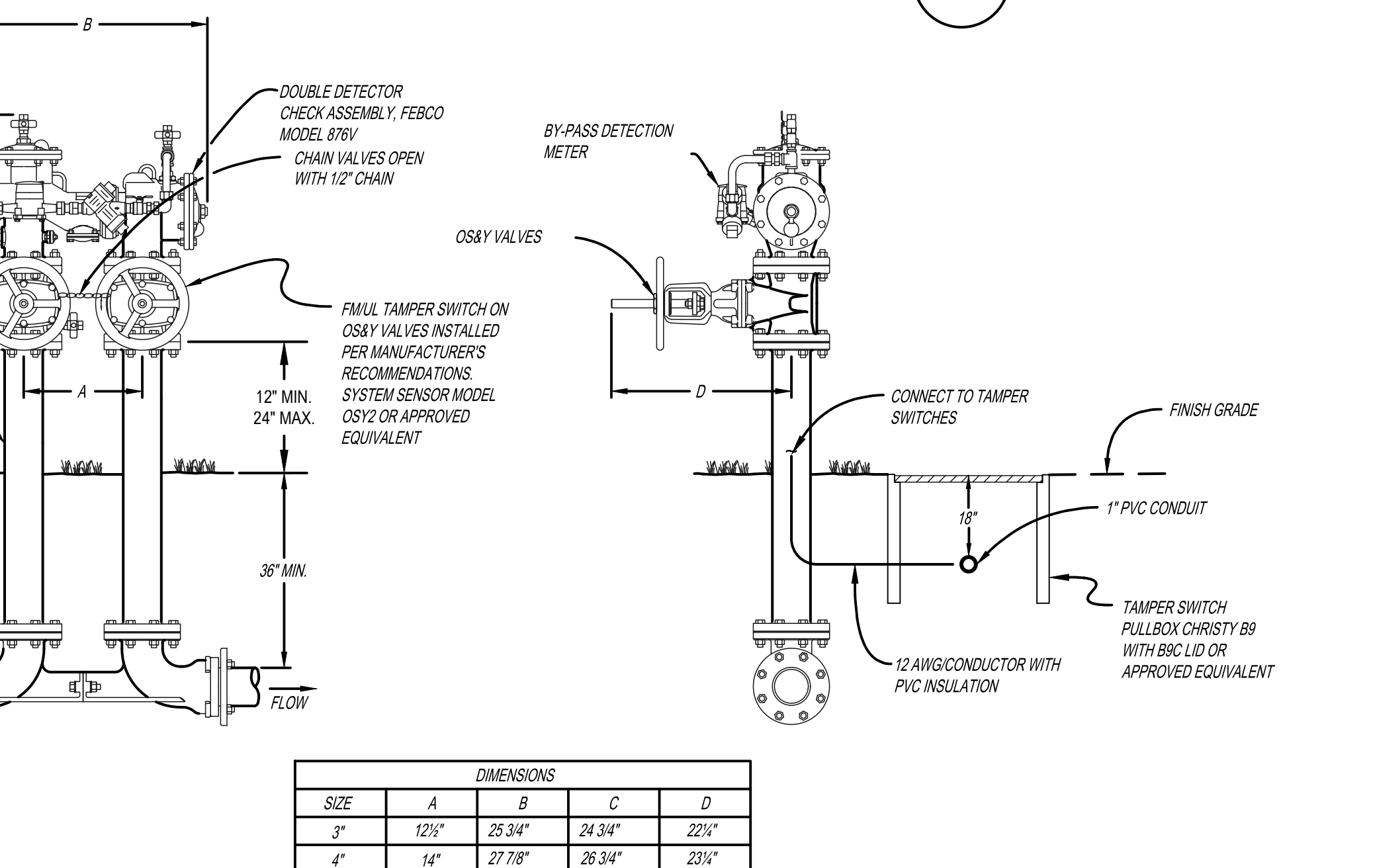
6\"/>



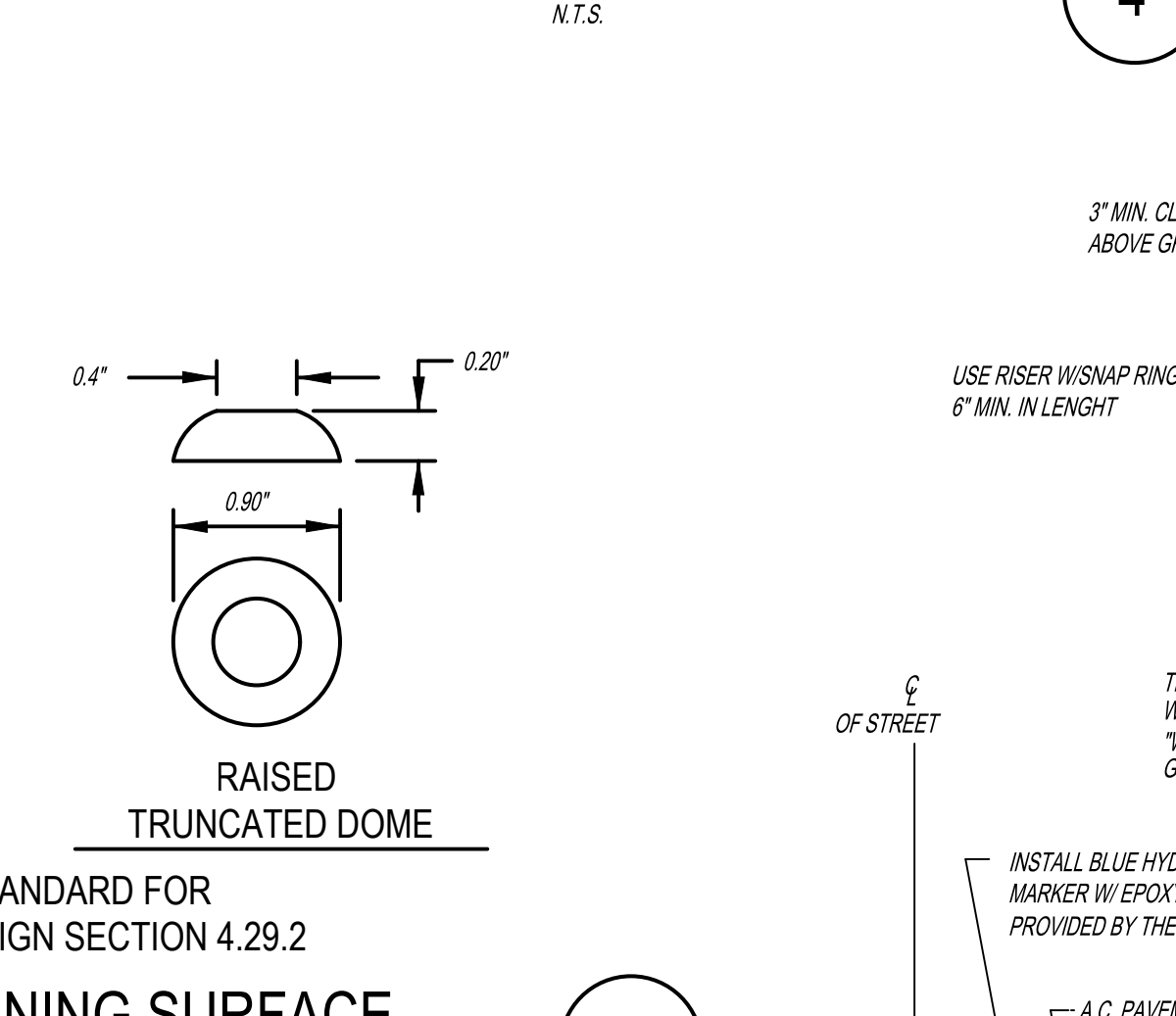
6\"/>



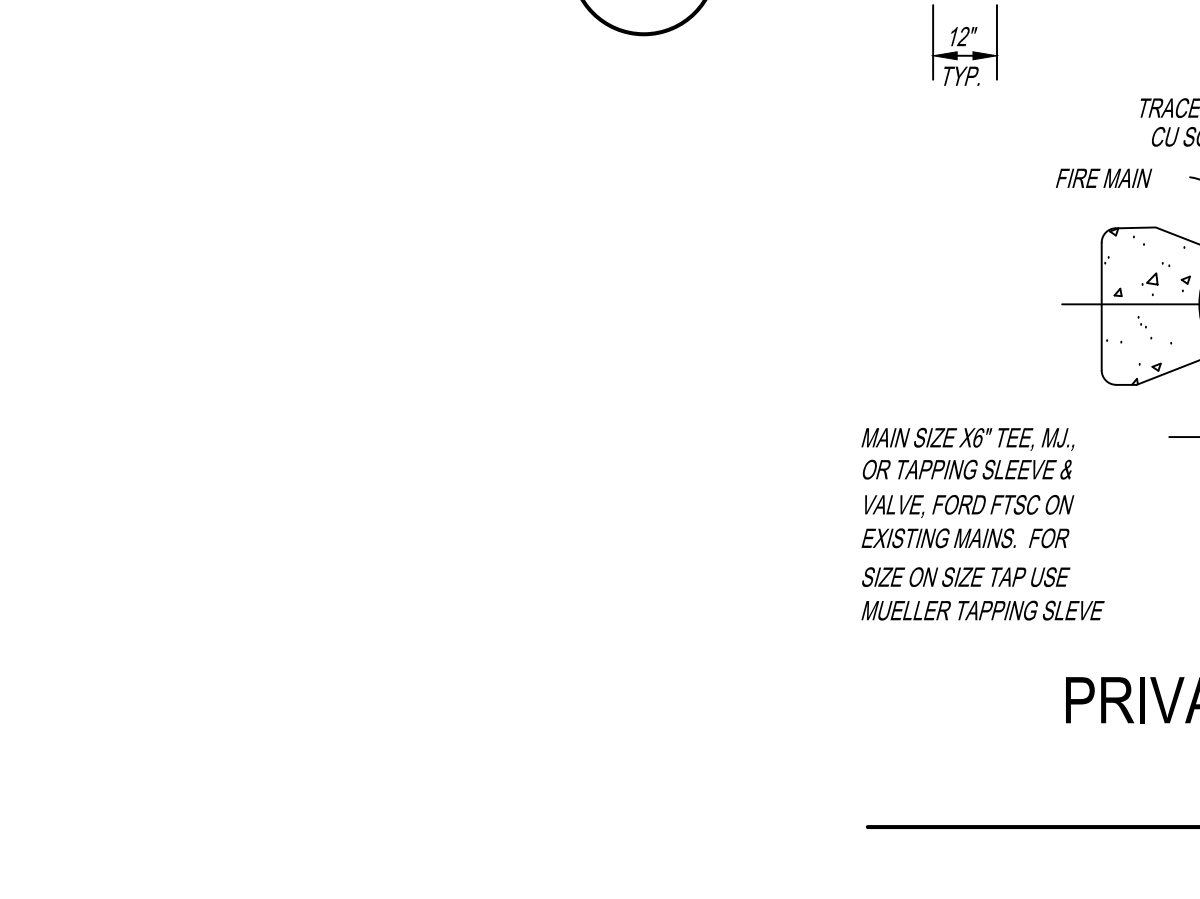
24\"/>



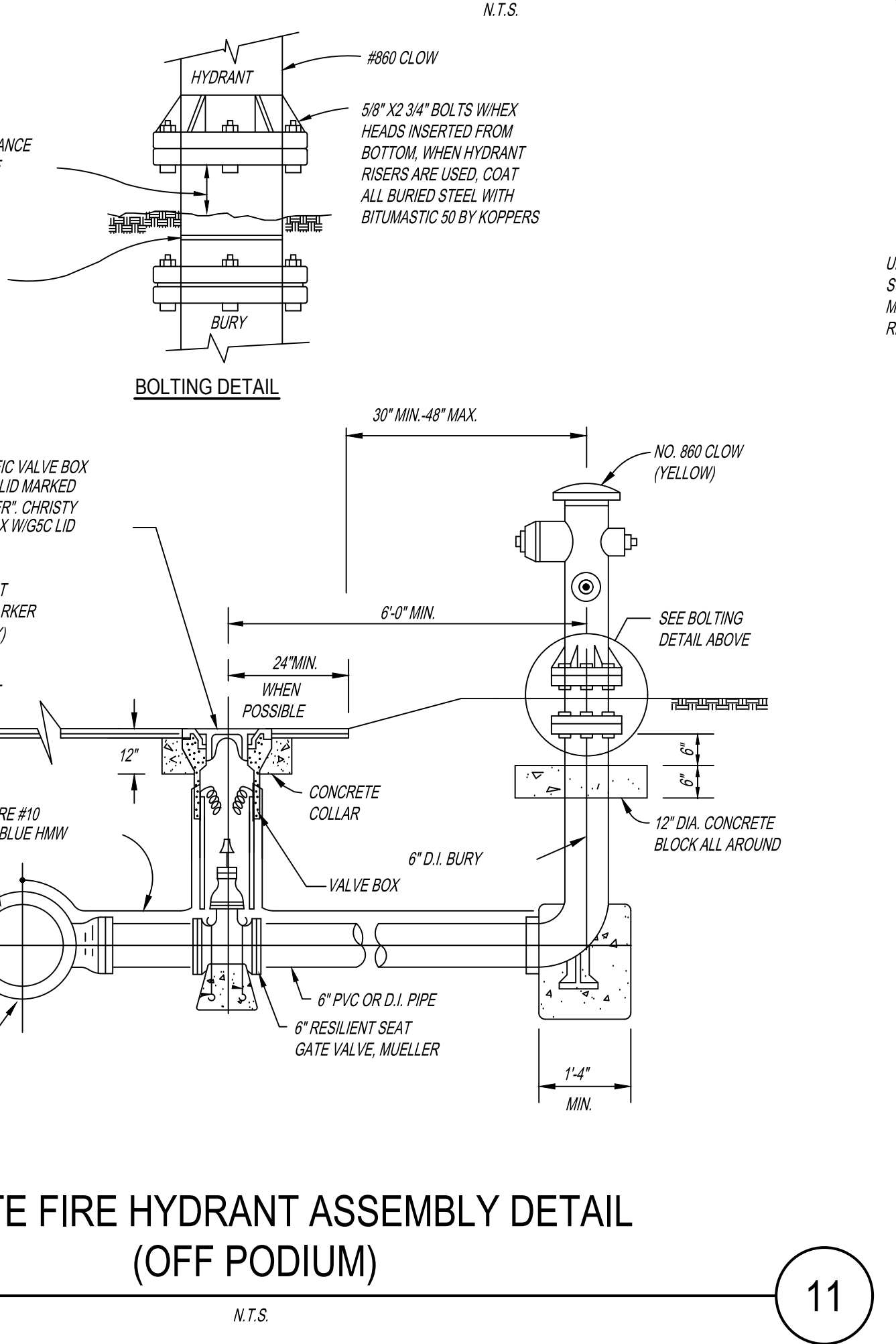
CLEANOUT WITH LATERAL STUB
N.T.S.



RAISED TRUNCATED DOME PATTERN



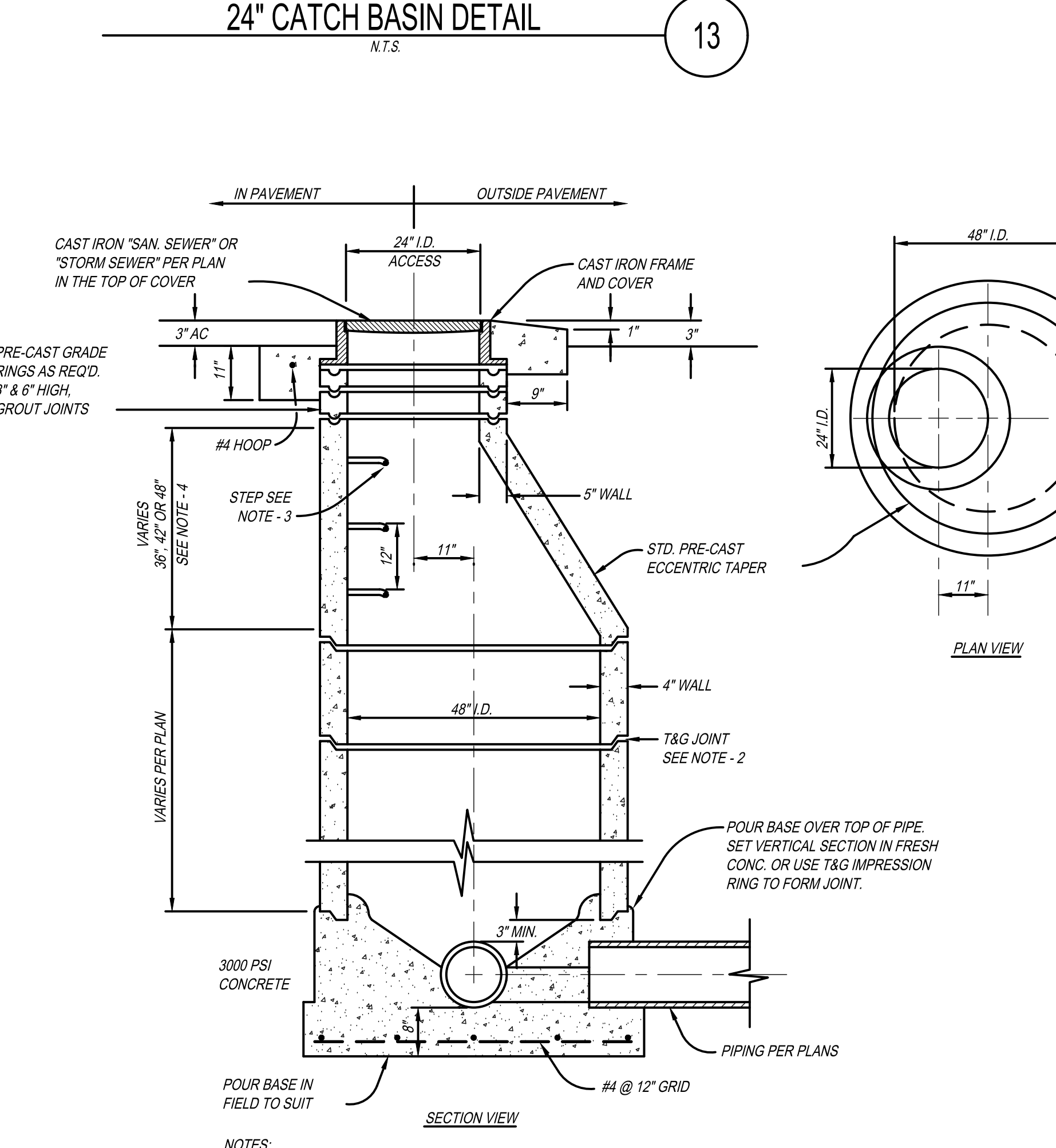
PRIVATE FIRE HYDRANT ASSEMBLY DETAIL (OFF PODIUM)
N.T.S.



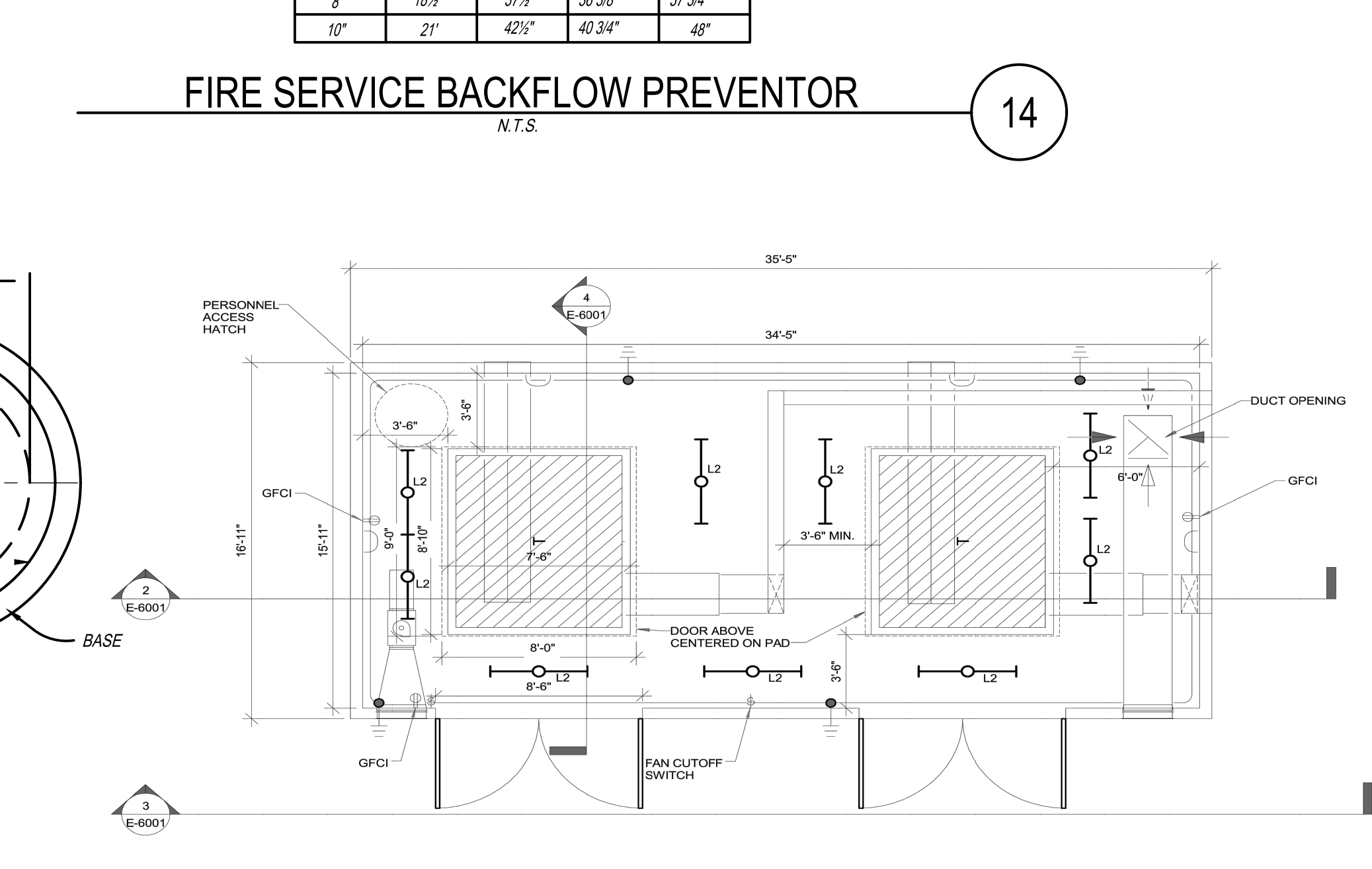
TRENCH DETAIL
N.T.S.

COMPACTION REQUIREMENTS					
	TRENCH SAND	TRENCH GRAVEL	APPROVED FILL	IMPORTED FILL	CLASS II AGGREGATE BASE
SUBSEQUENT BACKFILL MATERIAL (UNDER PAVEMENT)	N/A	N/A	XX% (85%)	XX% (85%)	XX% (85%)
SUBSEQUENT BACKFILL MATERIAL (IN LANDSCAPE)	N/A	N/A	XX% (85%)	XX% (85%)	XX% (85%)
INITIAL BACKFILL MATERIAL	XX% (85%)	XX% (85%)	N/A	N/A	N/A
BEDDING MATERIAL	XX% (85%)	XX% (85%)	N/A	N/A	N/A

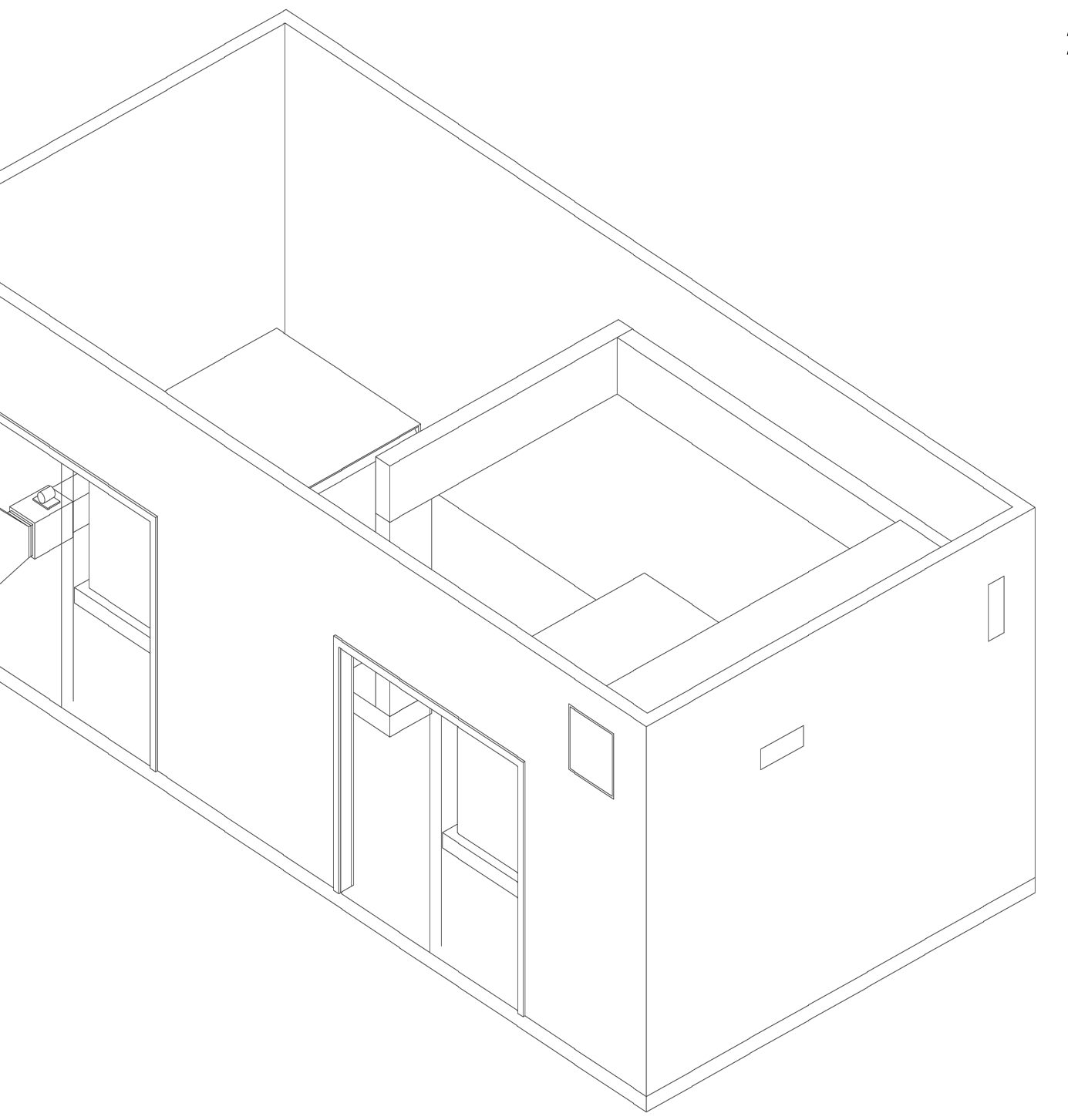
NOTE: ENGINEER SHALL CONFIRM COMPACTION REQUIREMENTS WITH PROJECT GEOTECHNICAL ENGINEER. VALUES SHOWN ARE ONLY TYPICAL VALUES AND ARE NOT SITE SPECIFIC.



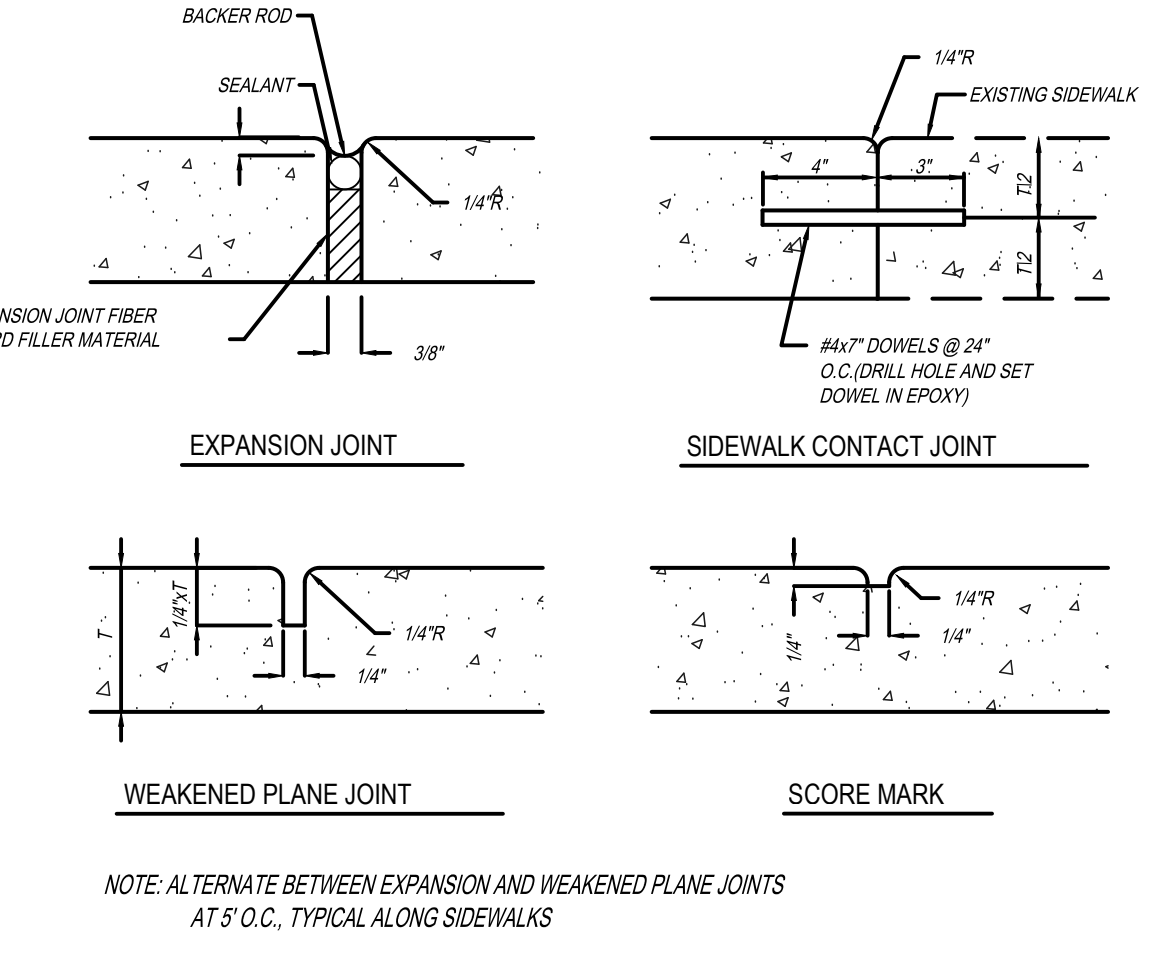
TYPICAL MANHOLE DETAIL
N.T.S.



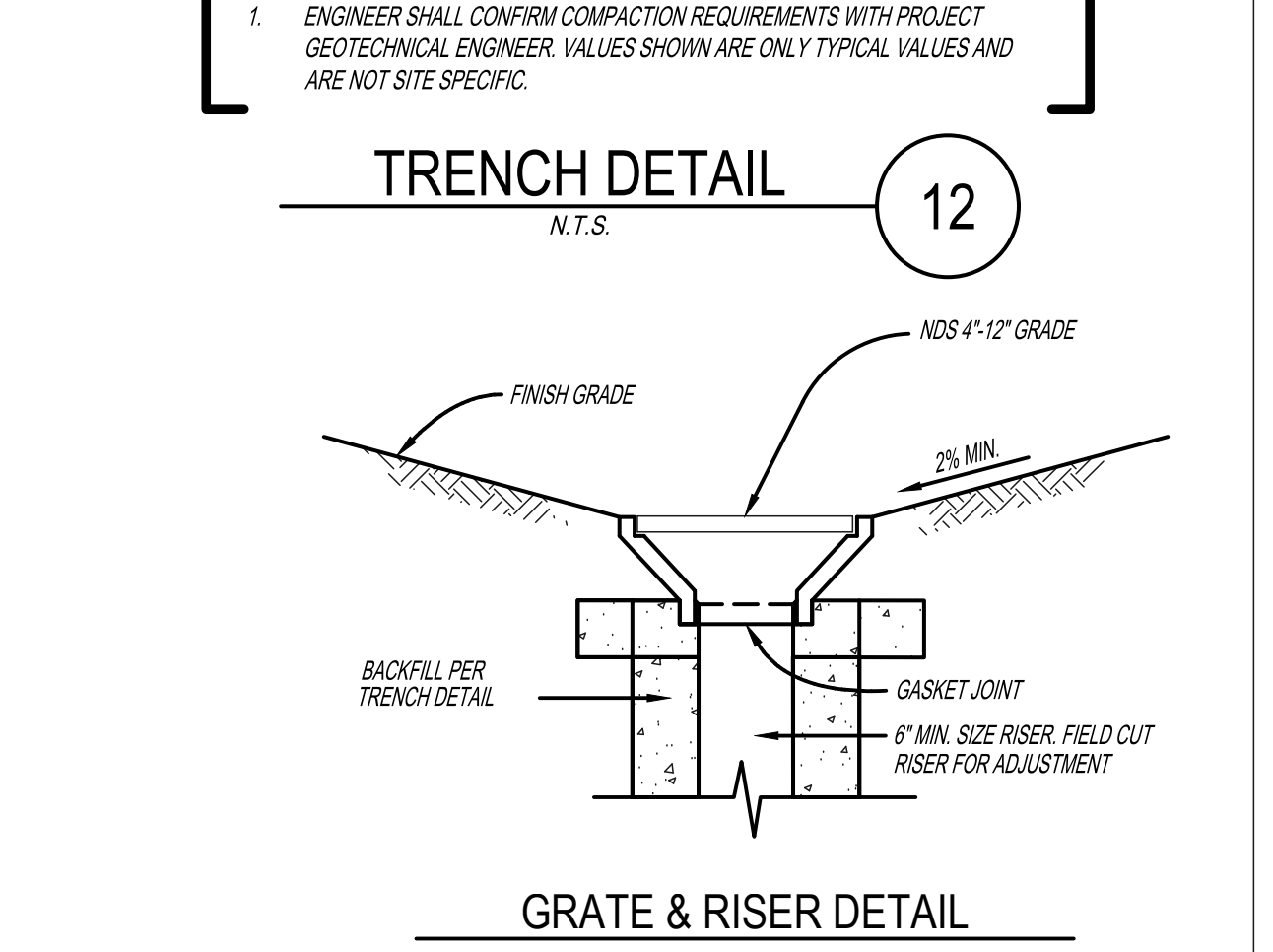
2 XFMR VAULT PLAN VIEW
N.T.S.



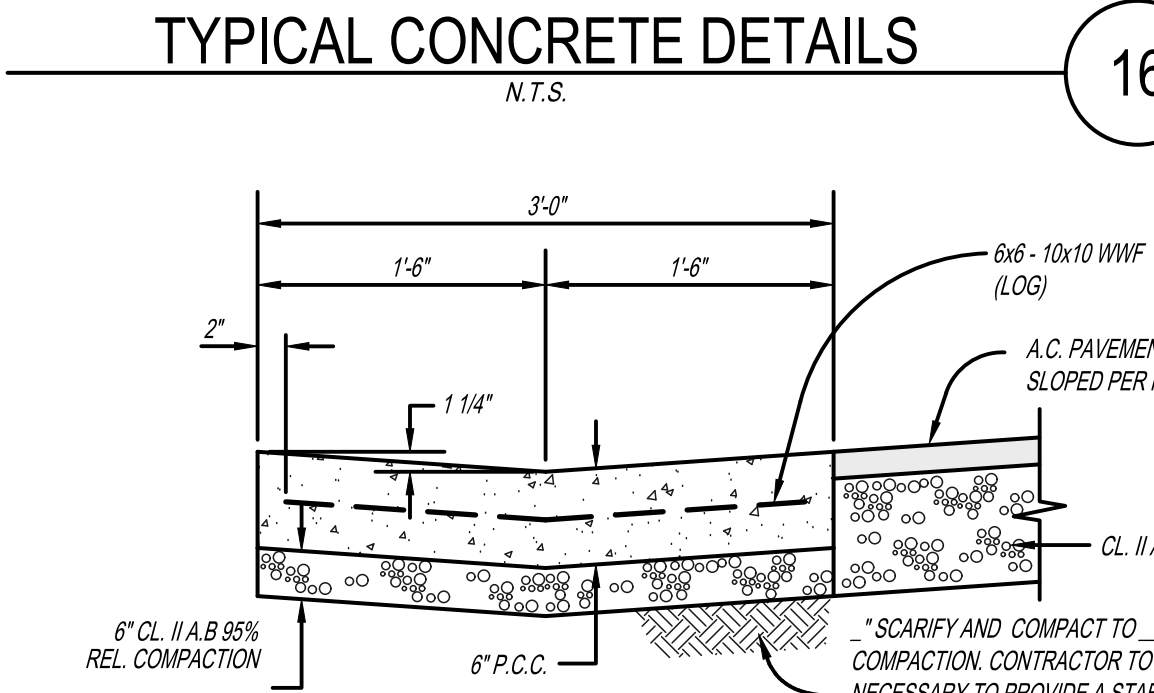
3D VAULT VIEW - 2 XFMR
N.T.S.



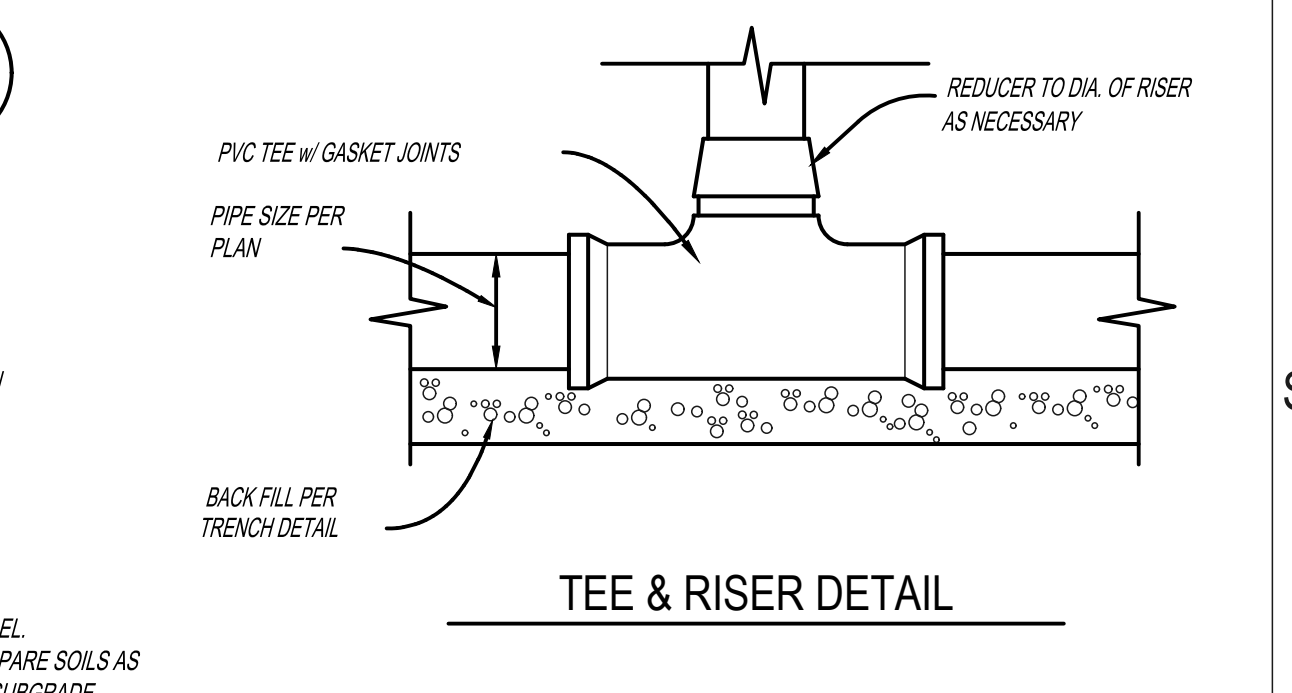
TYPICAL CONCRETE DETAILS
N.T.S.



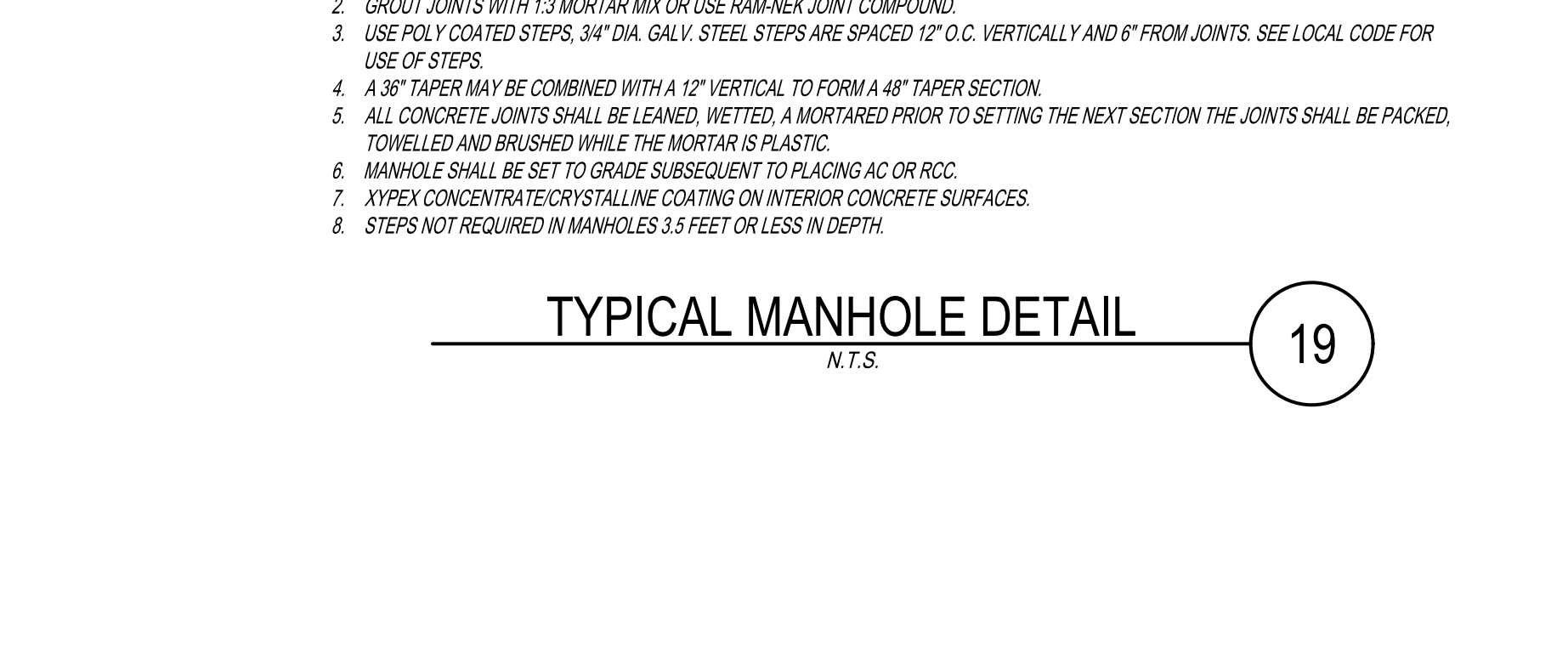
GRATE & RISER DETAIL
N.T.S.



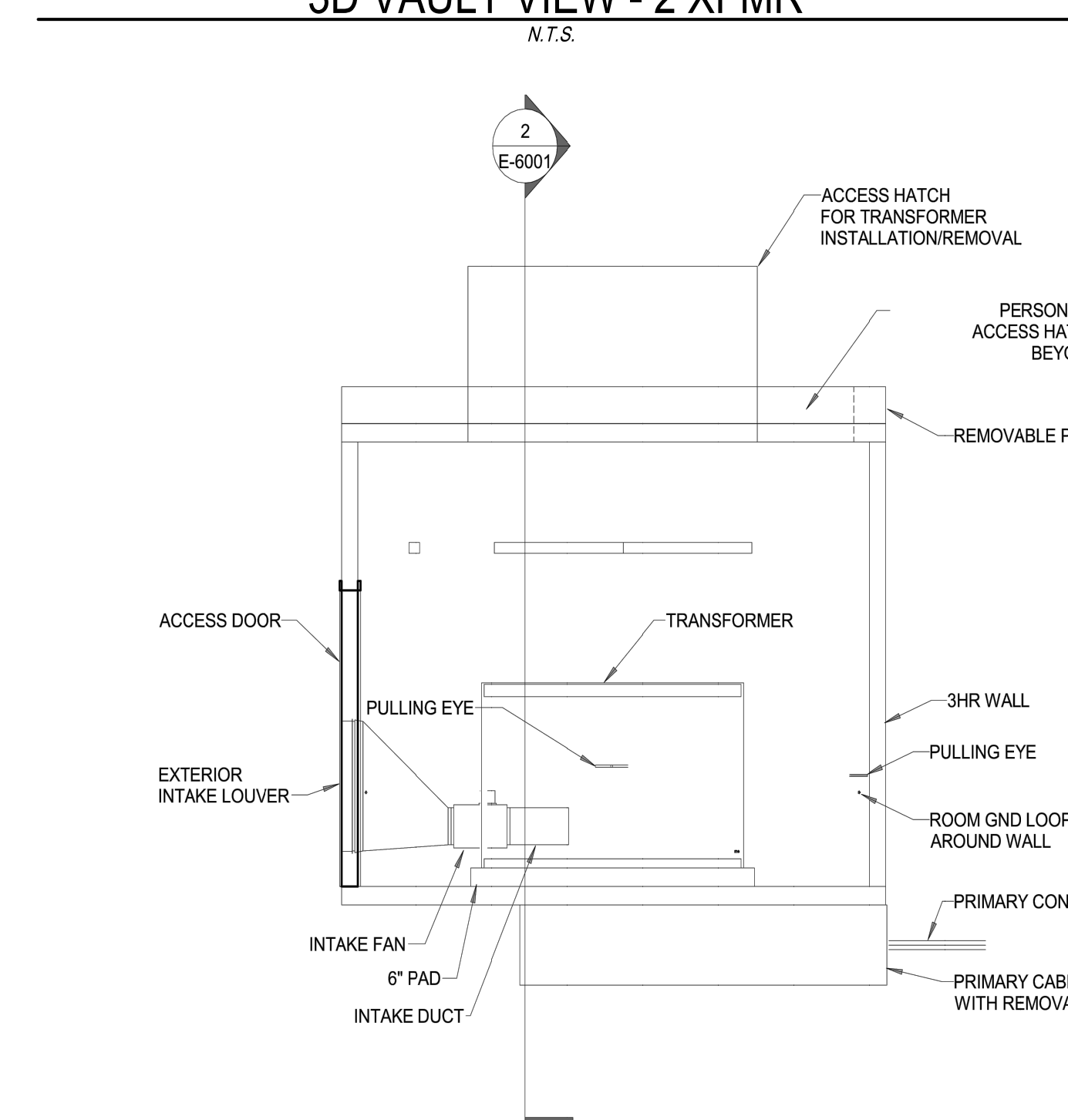
VALLEY GUTTER
N.T.S.



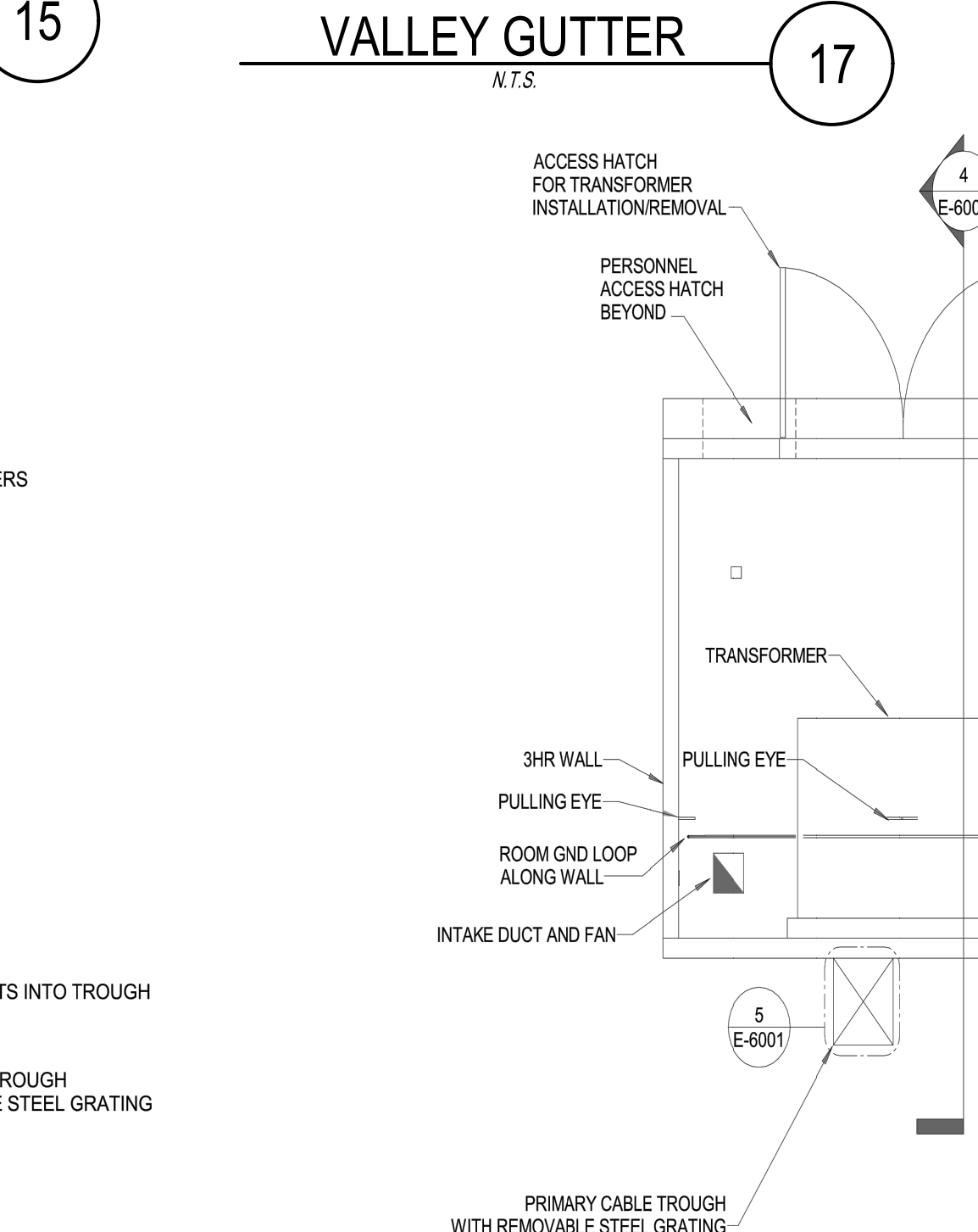
TEE & RISER DETAIL
N.T.S.



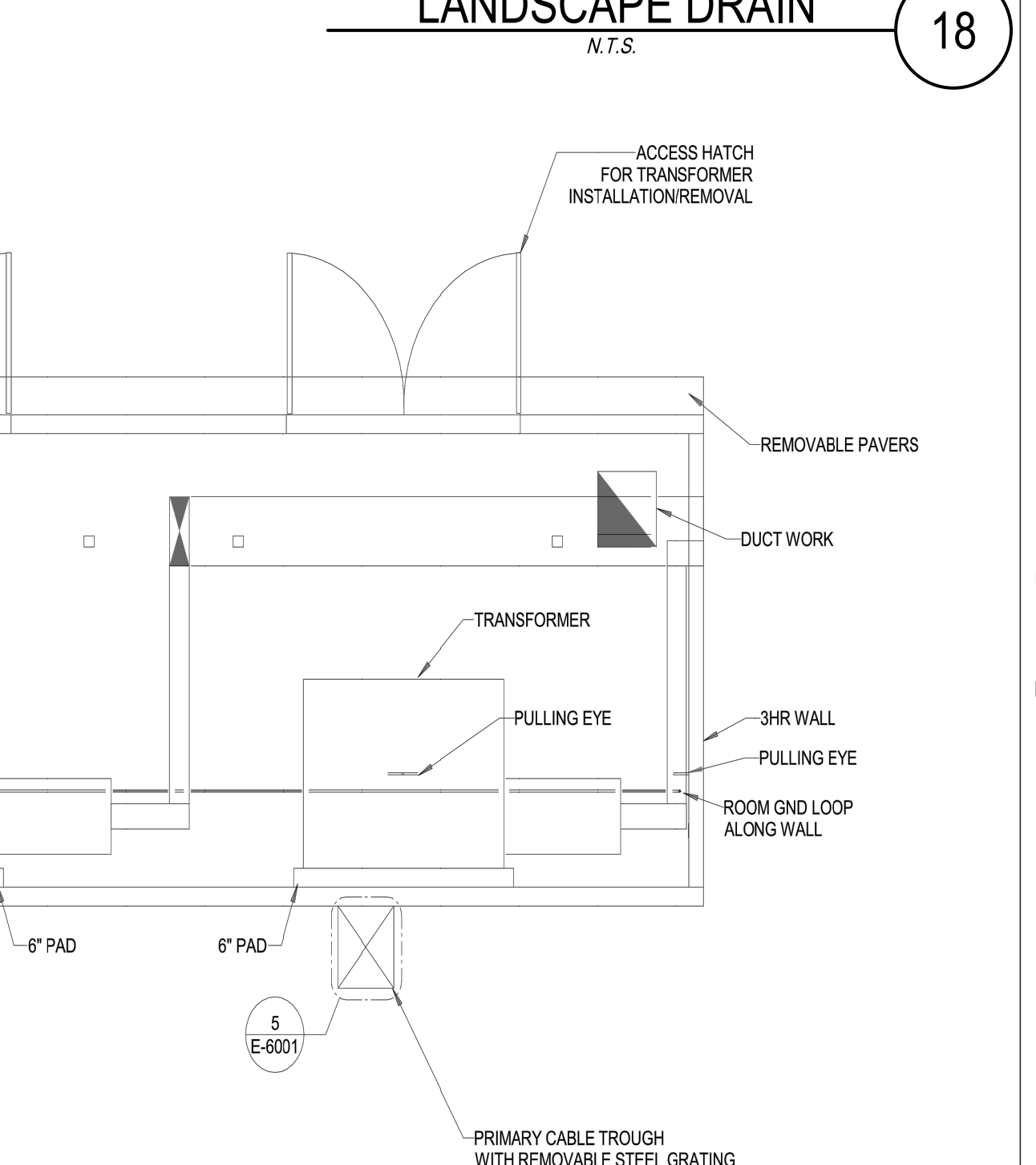
VENTILATION AND ENTRANCE DETAIL
N.T.S.



SECTION 1 - 2 XFMR
N.T.S.



SECTION 2 - 2 XFMR
N.T.S.



LANDSCAPE DRAIN
N.T.S.

NOT FOR CONSTRUCTION

DISCLAIMER: THE ARCHITECT/ENGINEER SHALL HAVE NO RESPONSIBILITY FOR ANY LIABILITY, LOSS, COST, DAMAGE OR EXPENSE ARISING FROM OR RELATING TO ANY USE OF THIS DOCUMENT FOR ANY PURPOSE OTHER THAN THAT INTENDED BY THE ARCHITECT/ENGINEER. THIS DOCUMENT IS TO BE CONSIDERED IN CONJUNCTION WITH ALL RELATED DOCUMENTATION. ANY DISCREPANCIES IDENTIFIED IN THIS DOCUMENT MUST BE REPORTED IMMEDIATELY TO THE ARCHITECT BEFORE PROCEEDING. CONTRACTORS MUST VERIFY ALL DIMENSIONS PRIOR TO PROCEEDING WITH ANY WORK. ONLY FIGURED DIMENSIONS ARE TO BE USED FOR VERIFICATION.

SB-35 DEVELOPMENT APPLICATION

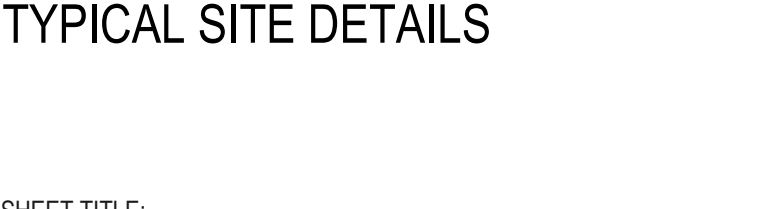
REV	DESCRIPTION	DATE
REV. 0	SB-35 DEVELOPMENT APPLICATION	03/27/2018
REV. 1	SB-35 APPLICATION REVISIONS	06/06/2018
REV. 2	SB-35 APPLICATION CORRELATION SET	09/15/2018

KEY PLAN AND NORTH ARROW

ARCHITECTS PROJECT NUMBER: 708011

PROJECT PHASE: SB-35 DEVELOPMENT APPLICATION

IF THIS DRAWING IS NOT 36" X 48" IT IS A REDUCED PRINT. REFER TO GRAPHIC SCALE.



TYPICAL SITE DETAILS

SHEET TITLE: **P-0407**

SHEET NUMBER: 9/2018 RAFAEL VINOLY ARCHITECTS PCL