

VALLCO TOWN CENTER

OWNER - VALLCO PROPERTY OWNER LLC
 965 PAGE MILL ROAD, PALO ALTO, CA 94304
 T. 650-344-1500

ARCHITECTURE - RAFAEL VINOLY ARCHITECTS
 50 WANDAM STREET, NEW YORK, NY 10013
 T. 212-924-6500

ARCHITECTURE - RAFAEL VINOLY ARCHITECTS
 1033 N. WOLFE ROAD, CUPERTINO, CA 95014
 T. 408-627-7500

LANDSCAPE ARCHITECTURE - OLIN PARTNERSHIP LTD.
 192 S. INDEPENDENCE MALL, W. SUITE 1123, PHILADELPHIA, PA 19106
 T. 215-440-0030

CIVIL - SANDS CIVIL ENGINEERS SURVEYORS PLANNERS, INC.
 1700 S. WINCHESTER BLVD, SUITE 200, CAMPBELL, CA 95008
 T. 408-636-6500

TRANSPORTATION ENGINEERING - ARUP NORTH AMERICA, LTD.
 580 MISSION STREET SUITE 700 SAN FRANCISCO CA 94105
 T. 415-557-8445

LIGHTING - ONE LUX STUDIO
 158 WEST 20TH STREET, 10TH FLOOR, NEW YORK, NY 10011
 T. 212-520-5750

SIGNAGE - EXIT
 1817 JFK BLVD, SUITE 1665, PHILADELPHIA, PA 19103
 T. 215-681-1550

PARKING ENGINEERING - WATRY DESIGN, INC.
 2090 GATEWAY PLACE, SUITE 550, SAN JOSE, CA 95110
 T. 408-392-7500

WASTE MANAGEMENT - CN+LITTLE INTERNATIONAL
 535 NORTH BRAN BLVD, STE 710 GLENDALE, CA 92103
 T. 626-441-7700

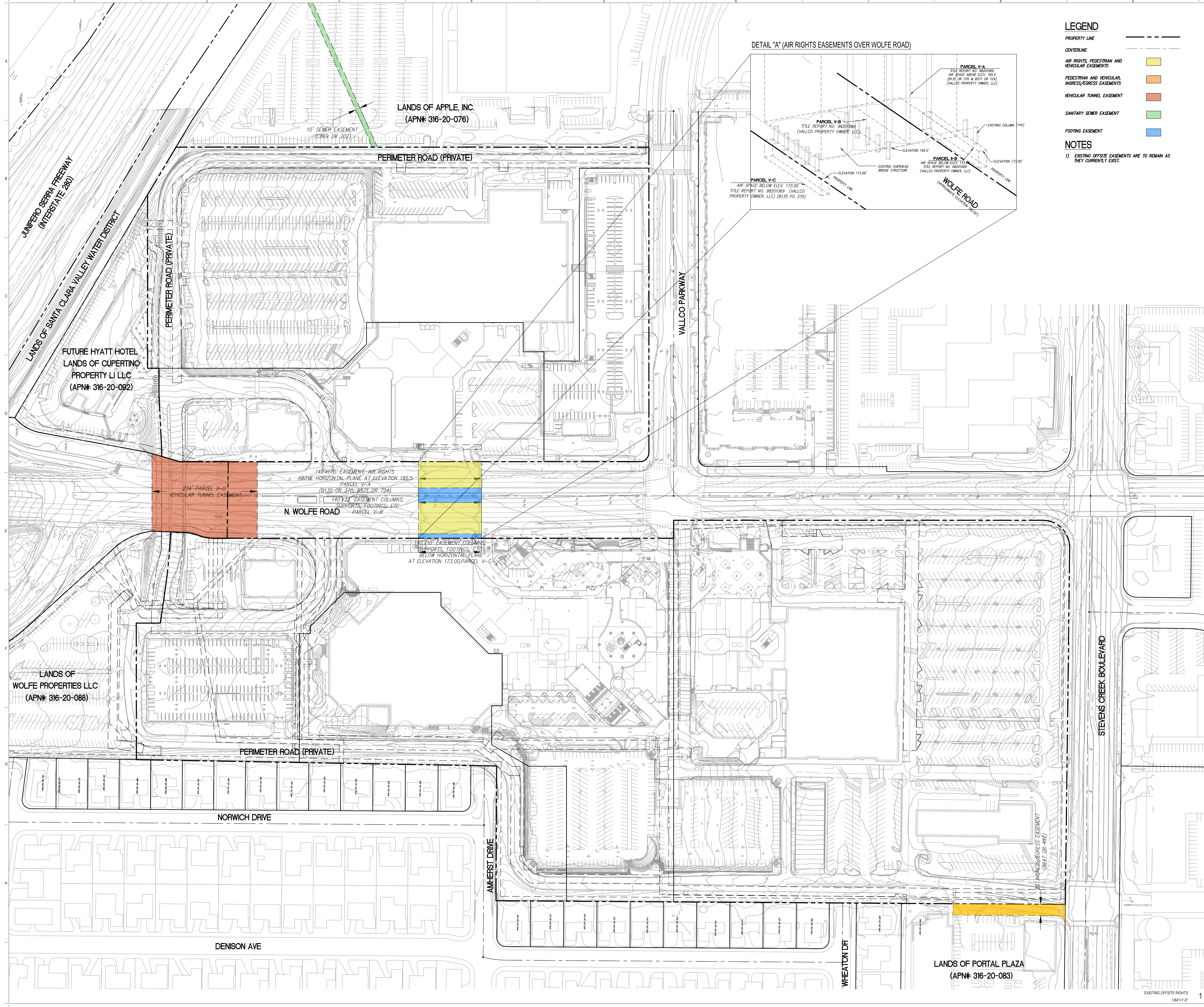
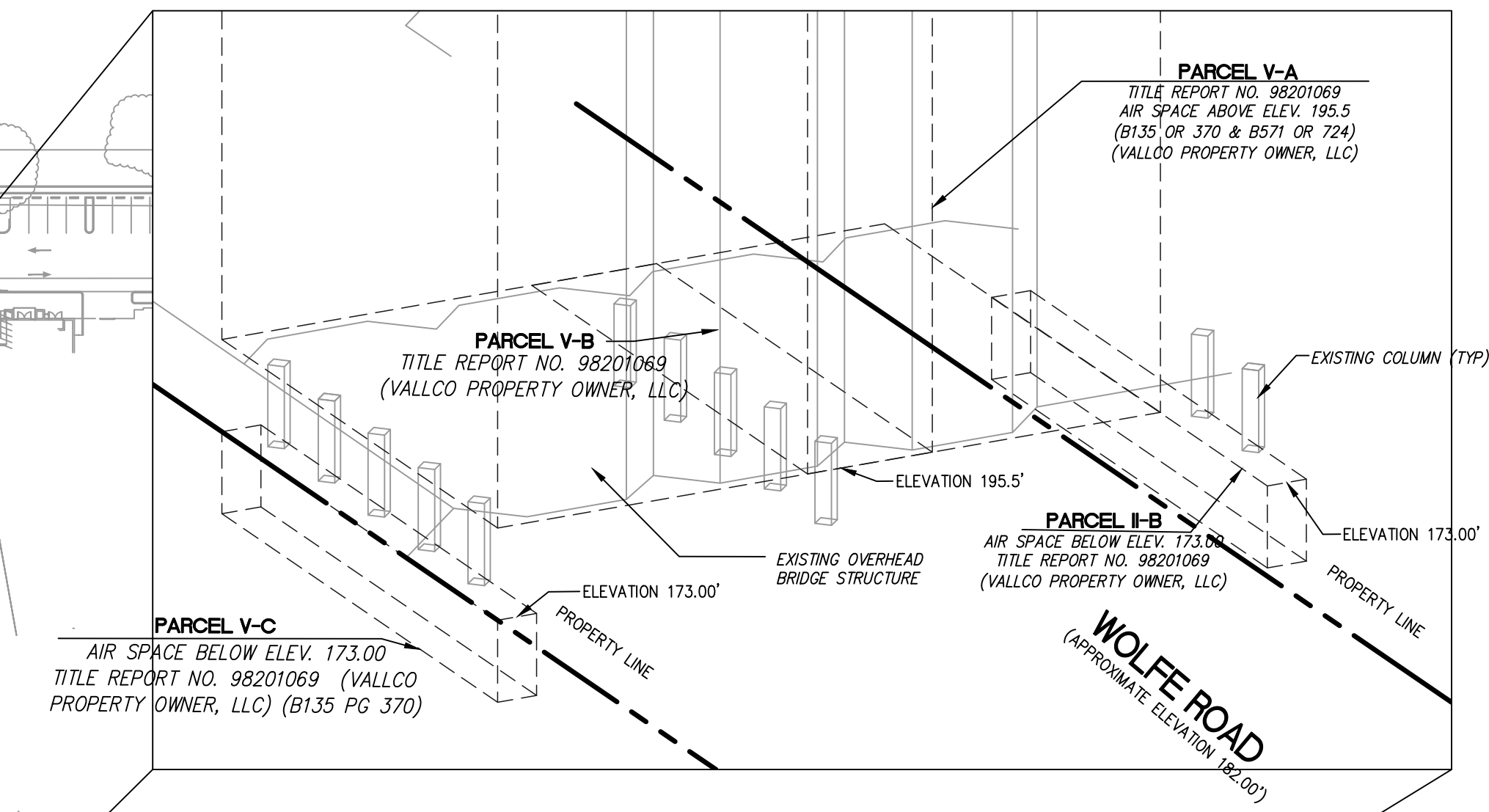
LEGEND

- PROPERTY LINE
- CENTERLINE
- AIR RIGHTS, PEDESTRIAN AND VEHICULAR EASEMENTS
- PEDESTRIAN AND VEHICULAR, INGRESS/EGRESS EASEMENTS
- VEHICULAR TUNNEL EASEMENT
- SANITARY SEWER EASEMENT
- FOOTING EASEMENT

NOTES

- 1) EXISTING OFFSITE EASEMENTS ARE TO REMAIN AS THEY CURRENTLY EXIST.

DETAIL "A" (AIR RIGHTS EASEMENTS OVER WOLFE ROAD)

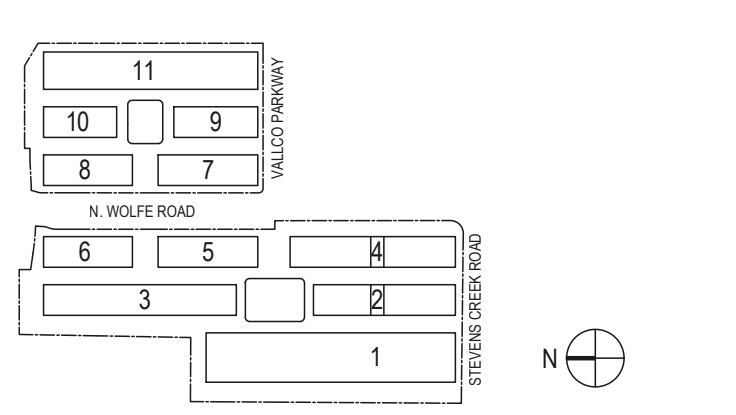


NOT FOR CONSTRUCTION

DISCLAIMER
 THE ARCHITECT/ENGINEER SHALL HAVE NO RESPONSIBILITY FOR ANY LIABILITY, LOSS, COST, DAMAGE OR EXPENSE ARISING FROM OR RELATING TO ANY USE OF THIS DOCUMENT FOR ANY PURPOSE OTHER THAN ITS INTENDED PURPOSE ON THIS PROJECT. THIS DOCUMENT IS TO BE CONSIDERED IN CONJUNCTION WITH ALL RELATED DOCUMENTATION. ANY DISCREPANCIES IDENTIFIED IN THIS DOCUMENT MUST BE REPORTED IMMEDIATELY TO THE ARCHITECT BEFORE PROCEEDING. CONTRACTORS MUST VERIFY ALL DIMENSIONS PRIOR TO PROCEEDING WITH ANY WORK. ONLY FIGURED DIMENSIONS ARE TO BE USED FOR VERIFICATION.

SB-35 DEVELOPMENT APPLICATION

REV	DESCRIPTION	DATE
REV 0	SB-35 DEVELOPMENT APPLICATION	03/27/2018
REV 1	SB-35 APPLICATION REVISIONS	06/06/2018
REV 2	SB-35 APPLICATION CONFORM SET	09/15/2018



KEY PLAN AND NORTH ARROW
 ARCHITECTS PROJECT NUMBER 108011
 PROJECT PHASE SB-35 DEVELOPMENT APPLICATION

IF THIS DRAWING IS NOT 36"x48" IT IS A REDUCED PRINT.
 REFER TO GRAPHIC SCALE



EXISTING OFFSITE RIGHTS

SHEET TITLE
P-0305
 SHEET NUMBER
 1