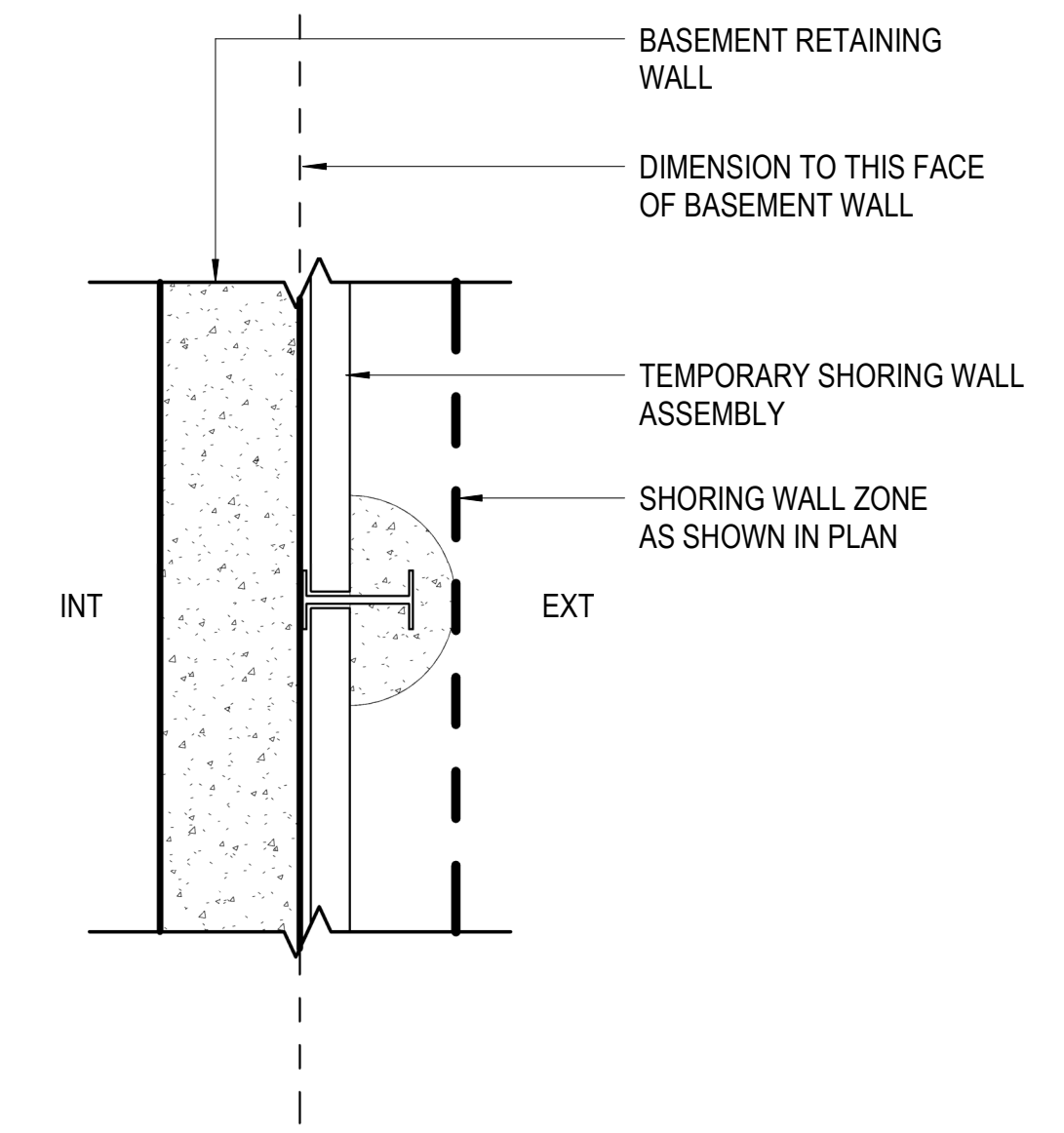


KEY DIMENSIONAL DIAGRAM



THE RISE

OWNER - VALCO PROPERTY OWNER LLC
2600 EL CAMINO REAL, SUITE 410, PALO ALTO, CA 94306
T. 650.344.1591

ARCHITECTURE - RAFAEL VINOLY ARCHITECTS
315 PEARL STREET, 31ST FLOOR, NEW YORK, NY 10038
T. 408-627-7090

LANDSCAPE ARCHITECTURE - OLIN PARTNERSHIP LTD.
10123 N. WOLFE ROAD, CUPERTINO, CA 95014
T. 214-440-0030

CIVIL - SANDS CIVIL ENGINEERS SURVEYORS PLANNERS, INC.
1106 S. WINCHESTER BLVD., SUITE 200, CAMPBELL, CA 95008
T. 408.636.0950

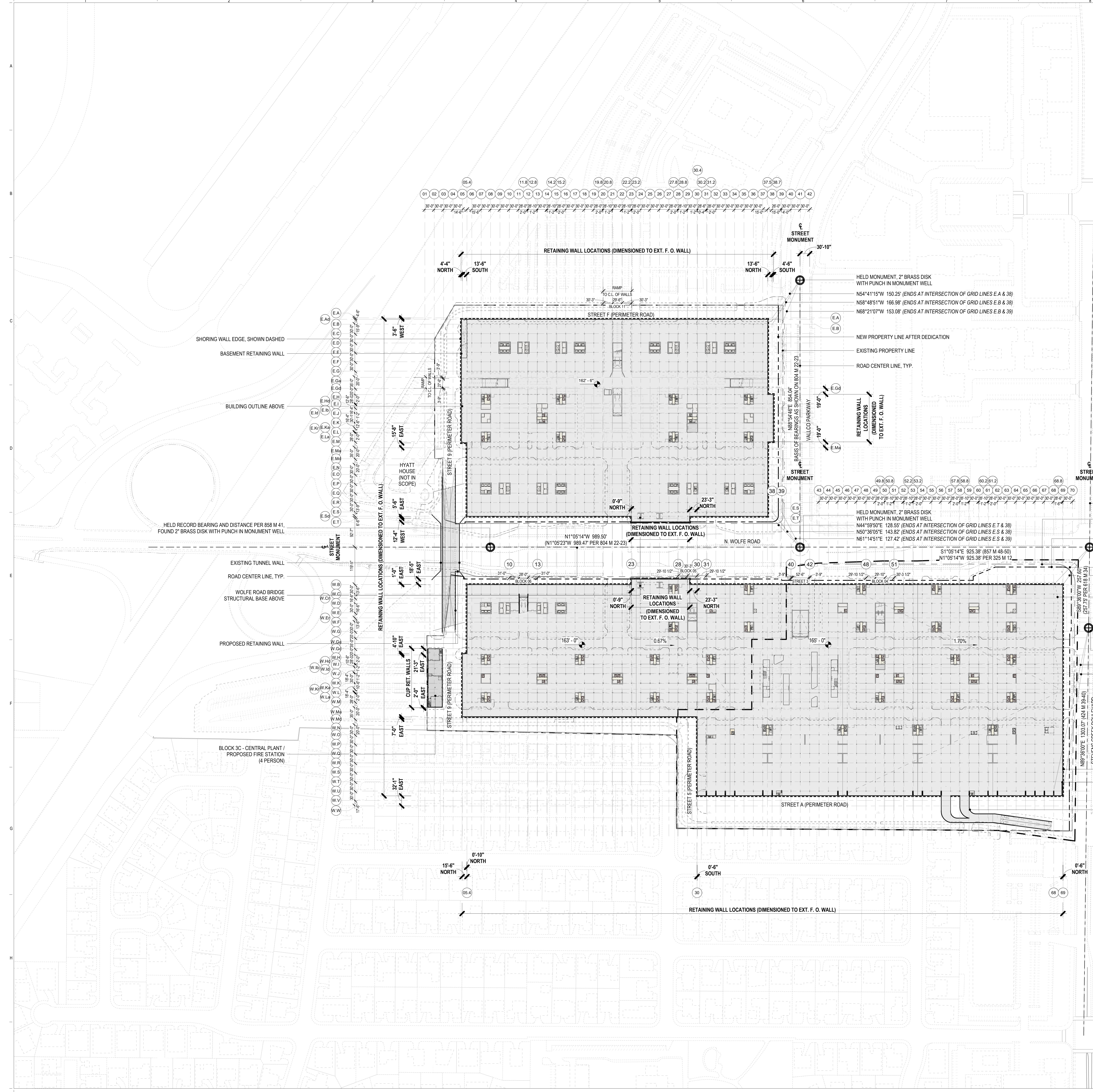
TRAFFIC - KIMLEY-HORN AND ASSOCIATES, INC.
100 W. SAN FERNANDO STREET, SUITE 200, SAN JOSE, CA 95113
T. 669-800-4130

LIGHTING DESIGN - ONE LUX STUDIO
158 WEST 29TH STREET, 10TH FLOOR, NEW YORK, NY 10001
T. 212-261-6790

SIGNAGE & WAYFINDING - EXIT DESIGN
725 N. 4TH STREET, PHILADELPHIA, PA 19123
T. 215-581-1950

PARKING ENGINEERING - WATRY DESIGN, INC.
2099 GATEWAY PLACE, SUITE 550, SAN JOSE, CA 95110
T. 408.360.7000

FOOD SERVICE, WASTE MANAGEMENT & LOGISTICS - CANI LITTLE
156 2ND STREET, SAN FRANCISCO, CA 94105
T. 415-522-9800



HELD MONUMENT, 2" BRASS DISK WITH PUNCH IN MONUMENT WELL
N54°41'15"W 150.25' (ENDS AT INTERSECTION OF GRID LINES E.A & 39)
N58°48'51"W 166.98' (ENDS AT INTERSECTION OF GRID LINES E.B & 39)
N68°21'07"W 153.08' (ENDS AT INTERSECTION OF GRID LINES E.B & 39)

NEW PROPERTY LINE AFTER DEDICATION
EXISTING PROPERTY LINE
ROAD CENTER LINE, TYP.

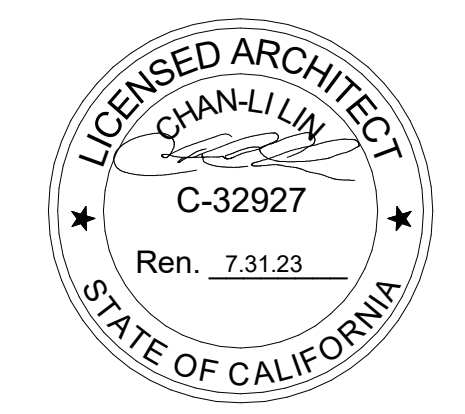
HELD MONUMENT, 2" BRASS DISK WITH PUNCH IN MONUMENT WELL
N44°59'50"E 128.55' (ENDS AT INTERSECTION OF GRID LINES E.T & 38)
N50°36'05"E 143.82' (ENDS AT INTERSECTION OF GRID LINES E.S & 38)
N61°14'51"E 127.42' (ENDS AT INTERSECTION OF GRID LINES E.S & 39)

HELD RECORD BEARING AND DISTANCE PER 858 M 41.
FOUND 2" BRASS DISK WITH PUNCH IN MONUMENT WELL

HELD RECORD BEARING AND DISTANCE PER 857 M 48-50.
FOUND 2" BRASS DISK WITH PUNCH IN MONUMENT WELL
N47°17'00"W 165.48' (ENDS AT INTERSECTION OF GRID LINES W.B & 68)
N55°47'34"W 146.32' (ENDS AT INTERSECTION OF GRID LINES W.B & 68)

HELD MONUMENT FOR CENTERLINE OF E. ESTATES DRIVE.
1-1/2" IRON PIPE WITH PLUG IN MONUMENT WELL (618 M 34)
N79°01'53"W 533.61' (ENDS AT INTERSECTION OF GRID LINES W.U & 68)
N82°12'57"W 528.16' (ENDS AT INTERSECTION OF GRID LINES W.U & 68)

SHORING WALL EDGE SHOWN DASHED
BASEMENT RETAINING WALL
WEST TUNNEL WALL



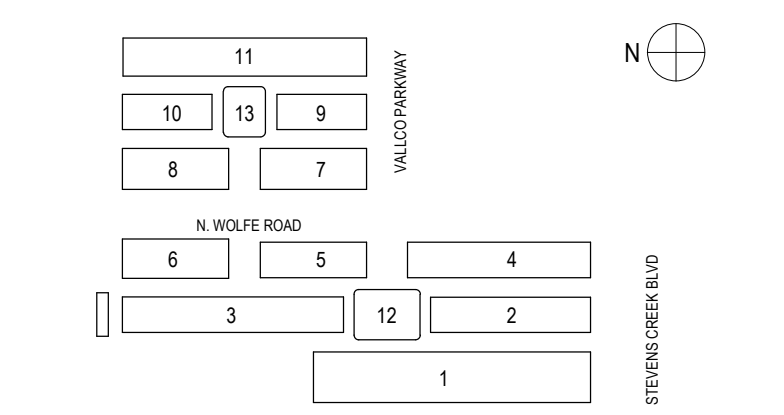
NOT FOR CONSTRUCTION

STAMP SIGNATURE

DISCLAIMER
THE ARCHITECT/ENGINEER SHALL HAVE NO RESPONSIBILITY FOR ANY LIABILITY, LOSS, COST, DAMAGE OR EXPENSE ARISING FROM OR RELATING TO ANY USE OF THIS DOCUMENT FOR ANY PURPOSE OTHER THAN THAT INTENDED FOR PURPOSE ON THIS PROJECT. THIS DOCUMENT IS TO BE CONSIDERED IN CONJUNCTION WITH ALL RELATED DOCUMENTATION. ANY DISCREPANCIES IDENTIFIED IN THIS DOCUMENT MUST BE REPORTED IMMEDIATELY TO THE ARCHITECT BEFORE PROCEEDING. CONTRACTORS MUST VERIFY ALL DIMENSIONS PRIOR TO PROCEEDING WITH ANY WORK. ONLY FIGURED DIMENSIONS ARE TO BE USED FOR VERIFICATION.

SB-35 MODIFICATION APPLICATION

REV	DESCRIPTION	DATE
REV-0	SB-35 MODIFICATION APPLICATION	03/23/2022



KEY PLAN AND NORTH ARROW

ARCHITECTS PROJECT NUMBER 708.012

IF THIS DRAWING IS NOT 36"x48" IT IS A REDUCED PRINT. REFER TO GRAPHIC SCALE.

SCALE: 1/1000"=1'-0"

MASTER SITE PLAN - BASEMENT LEVEL

SHEET TITLE

P-0204

SHEET NUMBER

© 2022 RAFAEL VINOLY ARCHITECTS PCL