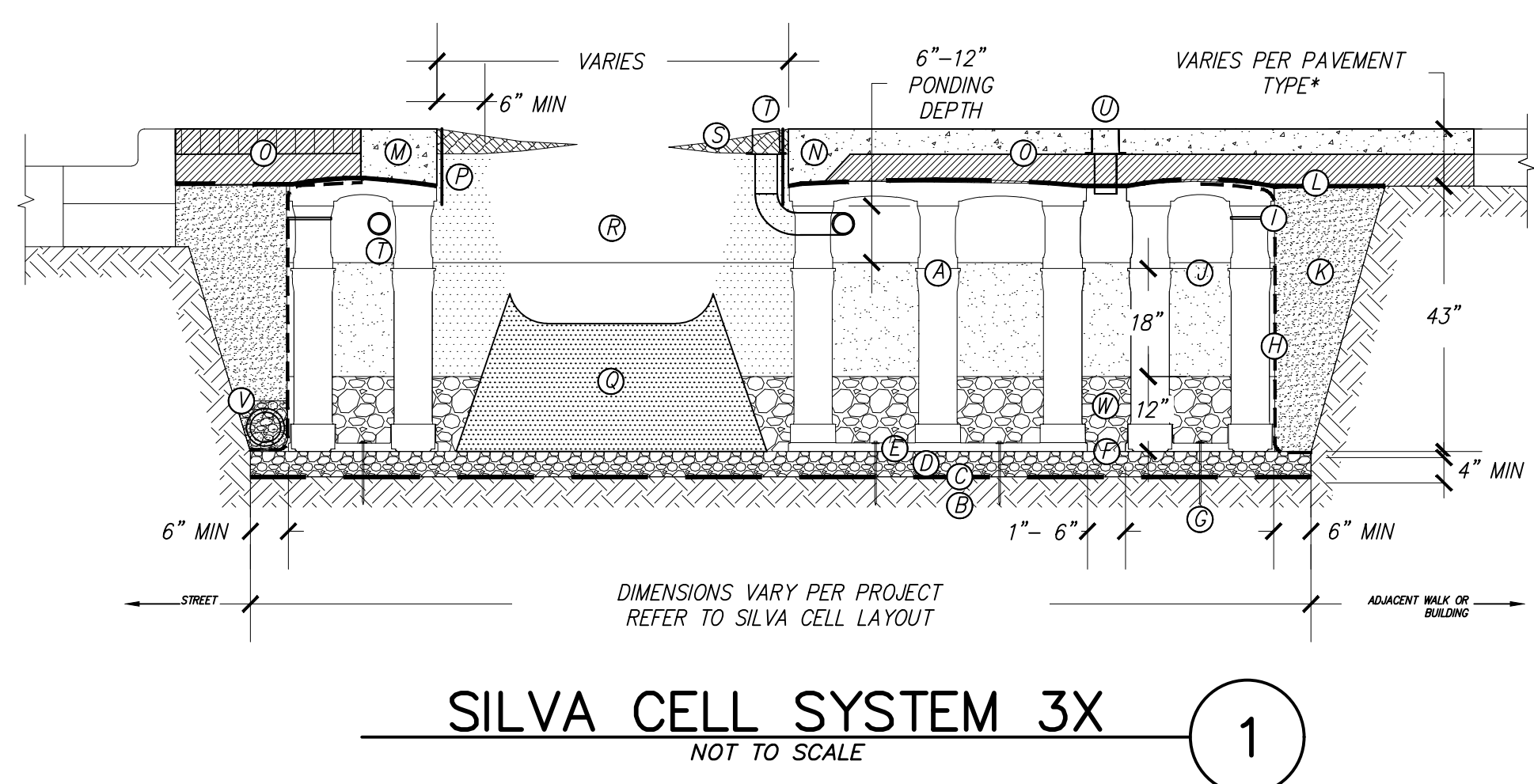
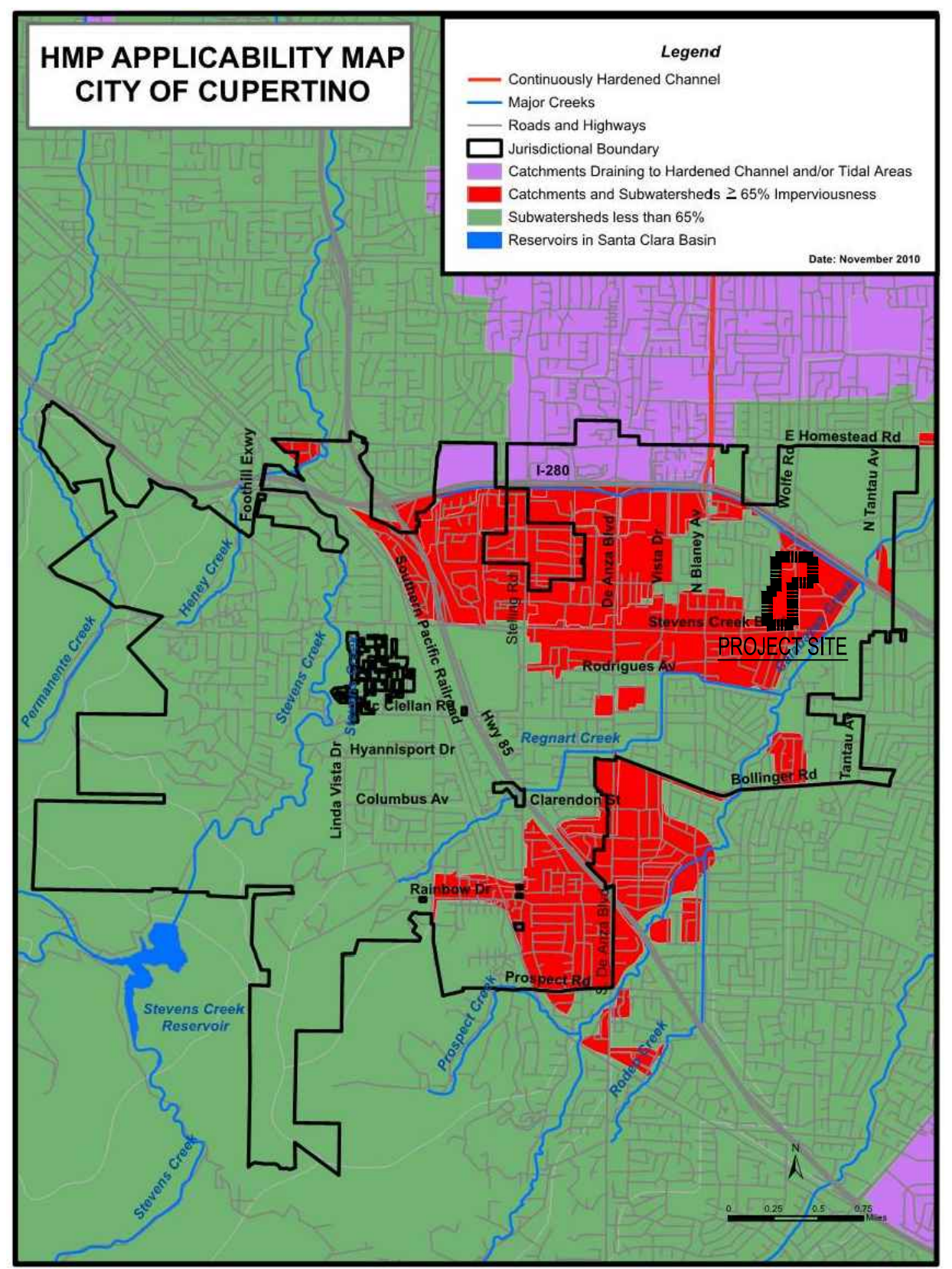


Table A: BMP Summary Table. Columns include Drainage Area, TOTAL AREA, IMPERVIOUS AREA, PERVIOUS AREA, Percent Impervious, Evergreen Trees, Deciduous Trees, Existing Tree Canopy, Tree Credit, Net Impervious Area, Treatment Area, Treatment Control Method, Treatment Provided, Path to Treatment Area.



- KEY PLAN: A SILVA CELL SYSTEM (DECK, BASE, AND POSTS), B SUBGRADE, COMPACTED, C GEOTEXTILE FABRIC, PLACED ABOVE SUBGRADE, D 4\"/>

- PAVEMENT AND AGGREGATE BASE PER PROJECT * MINIMUM PAVEMENT PROFILE OPTIONS TO MEET H-20 LOADING: PAVEMENT + AGGREGATE BASE COURSE, 4\"/>



HYDROMODIFICATION MAP N.T.S. NOTE: PROJECT IS EXEMPT FROM HYDROMODIFICATION BECAUSE IT IS LOCATED IN A WATERSHED THAT IS GREATER THAN 65% IMPERVIOUS.

*200 square feet per proposed evergreen tree, 100 square feet per proposed deciduous tree, square footage under the tree canopy for each existing tree. **A: Drainage to sheet flow on surface, captured via storm inlets and directed to treatment areas.

City of Cupertino Permit Provision C.3 Impervious Surface Data Form. Includes sections for Project Information, Project Description, and Applicant/Developer Information.

2. Project Size. a. Total Site Area: 49.48 acres. b. Total Site Area Disturbed: 29.48 acres. Includes tables for Site Totals and Percent Replacement of IA in Redevelopment Projects.

6. Selection of Specific Stormwater Control Measures. Includes checkboxes for Site Design Measures (e.g., Minimize land disturbed) and Source Control Measures (e.g., Wash area/trucks).

7. Stormwater Treatment Measure (STM) Sizing for Projects with Treatment Requirements. Includes a table for Stormwater Treatment Measure (STM) and Hydraulic Sizing Criteria Used, and sections for Alternative Certification and Operation & Maintenance Information.



DATE: 12/04/2023 SCALE: NTS DRAWN BY: LS APPROVED BY: ND DRAWING NO: 223237 CHAD J. BROWNING R.C.E. NO. 68315, EXPIRES 9-30-25

Table with columns: No., REVISION/ISSUE, DATE, BY. Rows include REV-1 SB-35 APPLICATION REVISIONS, REV-2 SB-35 APPLICATION CONFORM SET, etc.

TENTATIVE SUBDIVISION MAP VALLCO TOWN CENTER CUPERTINO CALIFORNIA SHEET 74 OF 74 SHEETS