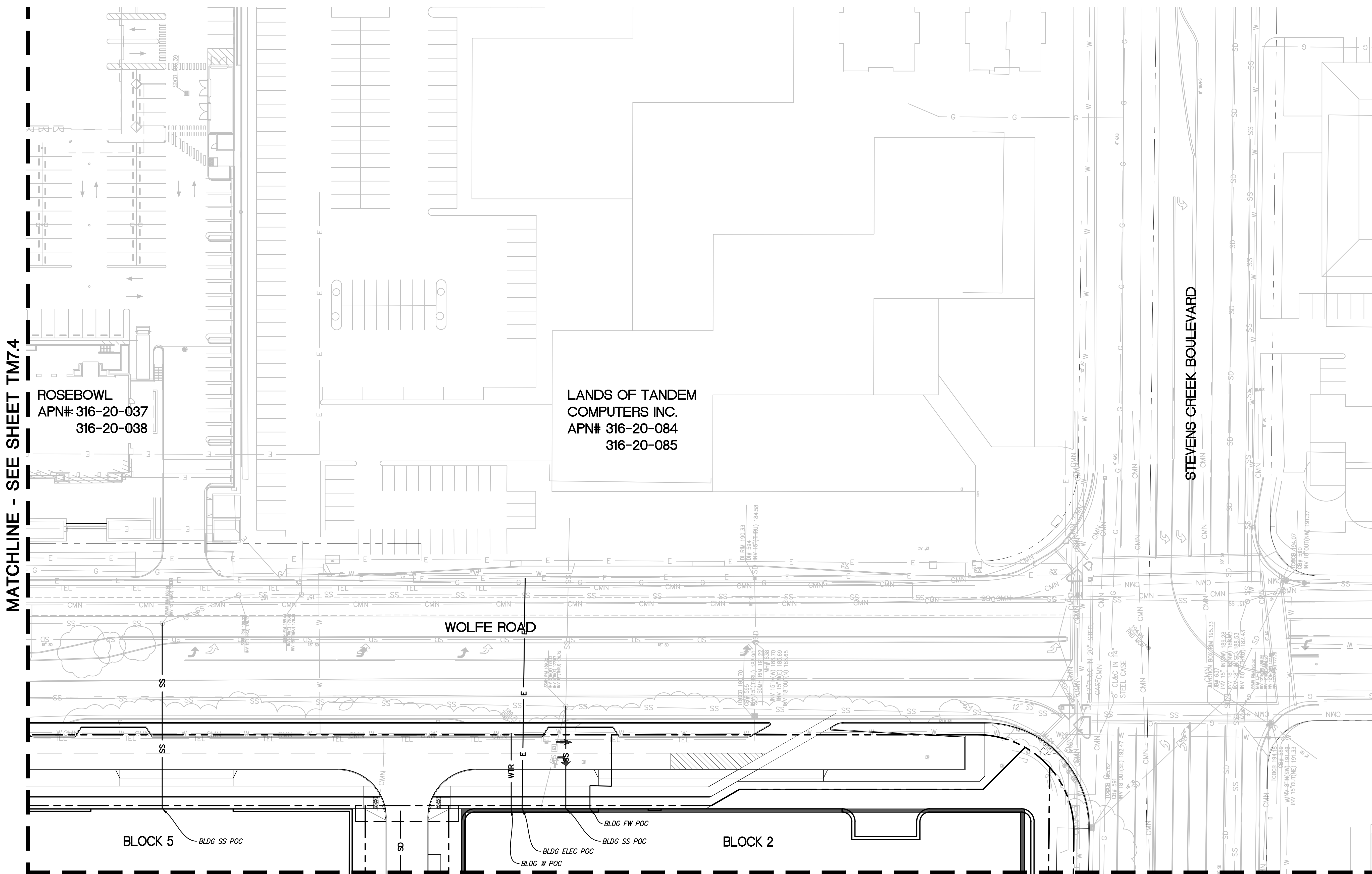


NO PART OF THIS DOCUMENT MAY BE REPRODUCED IN ANY FORM INCLUDING PHOTOCOPY, RECORDING OR ANY INFORMATION RETRIEVABLE AND STORAGE SYSTEM, WITHOUT PERMISSION IN WRITING FROM SANDIS.



LEGEND

- PROPERTY LINE
- - - ADJACENT PROPERTY LINE
- - - STREET CENTERLINE
- - - EASEMENT LINE
- FLOW ARROW
- ↘ OVERLAND RELEASE
- ⊕ WATER METER
- ⊕ BACKFLOW PREVENTER
- SD STORM DRAIN LINE
- SS SANITARY SEWER LINE
- W WATER LINE
- JT JOINT TRENCH LINE
- COM COMMUNICATION LINE
- ▭ UNDERGROUND GARAGE LIMIT
- ELECTRICAL VAULT

- UTILITY NOTE**
- TRANSFORMERS TO BE LOCATED WITHIN THE BUILDING.
 - UTILITY DESIGN IS CONCEPTUAL. FINAL LOCATIONS, SIZES, NUMBER AND OTHER DETAILS TO BE DETERMINED AND APPROVED AT A LATER DATE IN CONSULTATION WITH THE CITY'S PUBLIC WORKS DEPARTMENT AND OTHER PERMITTING AUTHORITIES SUCH AS PG&E.
 - EVERY DOMESTIC WATER SERVICES WILL HAVE AN INDIVIDUAL SUBMETERS LOCATED WITHIN THE PODIUM FOOTPRINT. EXACT LOCATIONS LOCATIONS WILL BE CONFIRMED IN CONSULTATION WITH THE PLUMBING ENGINEER.
 - STORMWATER DESIGN AND TREATMENT WITHIN THE PUBLIC RIGHT-OF-WAY TO BE ADDRESSED DURING THE STREET IMPROVEMENT PERMIT PHASE.
 - ALL IMPROVEMENTS ON ADJACENT PROPERTIES TO BE COORDINATED AND APPROVED (AS NECESSARY) BY PRIVATE AGREEMENT.
 - BACKFLOW PREVENTERS TO BE LOCATED WITHIN THE BUILDING.

MATCHLINE - SEE SHEET TM7.4

ROSEBOWL
APN# 316-20-037
316-20-038

LANDS OF TANDEM
COMPUTERS INC.
APN# 316-20-084
316-20-085

BLOCK 5 BLDG SS POC

BLDG FW POC
BLDG SS POC
BLDG ELEC POC
BLDG W POC

BLOCK 2

MATCHLINE - SEE SHEET TM7.8



BUILD ON.
SANDIS.NET

DATE: 12/04/2023
SCALE: 1"=30"
DRAWN BY: LS
APPROVED BY: ND
DRAWING NO.: 223237
DATE: DECEMBER 4, 2023
CHAD J. BROWNING
R.C.E. NO. 68315, EXPIRES 9-30-25



No.	REVISION/ISSUE	DATE	BY
REV-1	SB-35 APPLICATION REVISIONS	08/06/2018	ND
REV-2	SB-35 APPLICATION CONFORM SET	09/15/2018	ND
REV-3	SB-35 MODIFICATION DOCUMENTS	03/23/2022	ND
REV-4	SB-35 MODIFICATION APPLICATION	05/27/2022	ND
REV-5	SB-35 MODIFICATION DOCUMENTS	12/04/2023	ND

UTILITY PLAN

TENTATIVE SUBDIVISION MAP
VALLCO TOWN CENTER
CUPERTINO CALIFORNIA

SHEET
TM7.5
OF 74 SHEETS