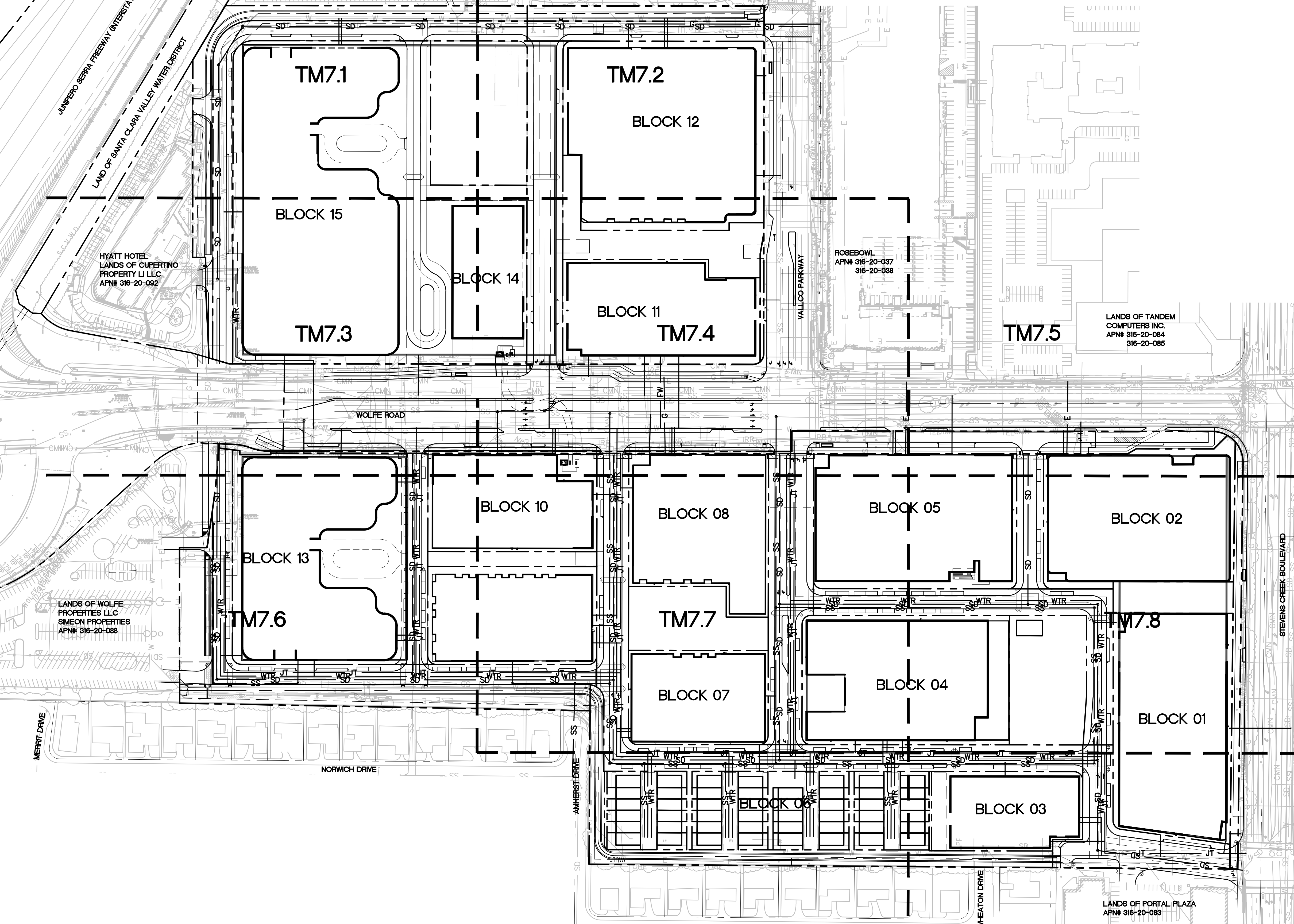
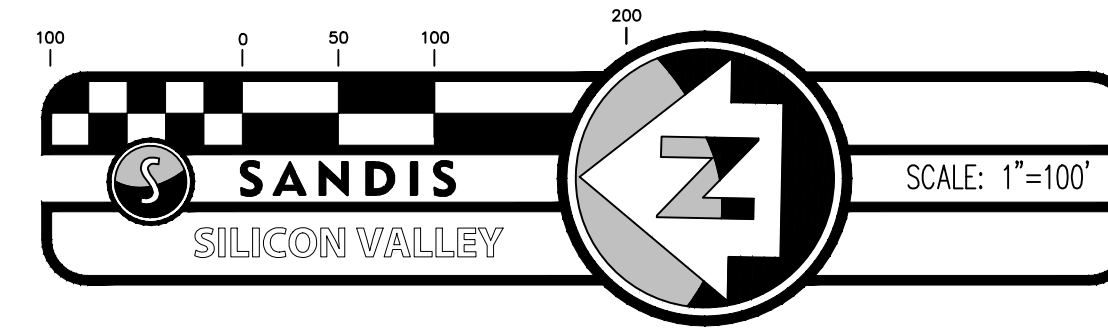


NO PART OF THIS DOCUMENT MAY BE REPRODUCED IN ANY FORM INCLUDING PHOTOCOPY, RECORDING OR ANY INFORMATION RETRIEVABLE AND STORAGE SYSTEM, WITHOUT PERMISSION IN WRITING FROM SANDIS.

LANDS OF APPLE, INC.
APN# 316-20-076



HYATT HOTEL
LANDS OF CUPERTINO
PROPERTY LI LLC
APN# 316-20-092

LANDS OF WOLFE
PROPERTIES LLC
SIMEON PROPERTIES
APN# 316-20-088

LANDS OF TANDEM
COMPUTERS INC.
APN# 316-20-084
316-20-085

LANDS OF PORTAL PLAZA
APN# 316-20-083



BUILD ON.
SANDIS.NET

DATE: 12/04/2023
SCALE: 1"=30'
DRAWN BY: LS
APPROVED BY: ND
DRAWING NO.: 223237
DATE: DECEMBER 4, 2023
CHAD J. BROWNING
R.C.E. NO. 68315, EXPIRES 9-30-25



No.	REVISION/ISSUE	DATE	BY
REV-1	SB-35 APPLICATION REVISIONS	08/06/2018	ND
REV-2	SB-35 APPLICATION CONFORM SET	09/15/2018	ND
REV-3	SB-35 MODIFICATION DOCUMENTS	03/23/2022	ND
REV-4	SB-35 MODIFICATION DOCUMENTS	12/04/2023	ND

OVERALL
UTILITY PLAN

TENTATIVE SUBDIVISION MAP
VALLCO TOWN CENTER
CUPERTINO CALIFORNIA

SHEET
TM7.0
OF 74 SHEETS
Copyright © 2018 by Sandis