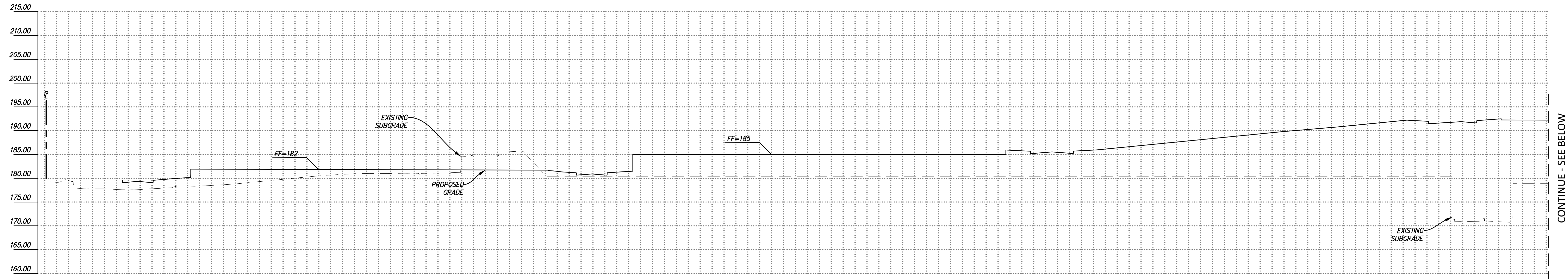
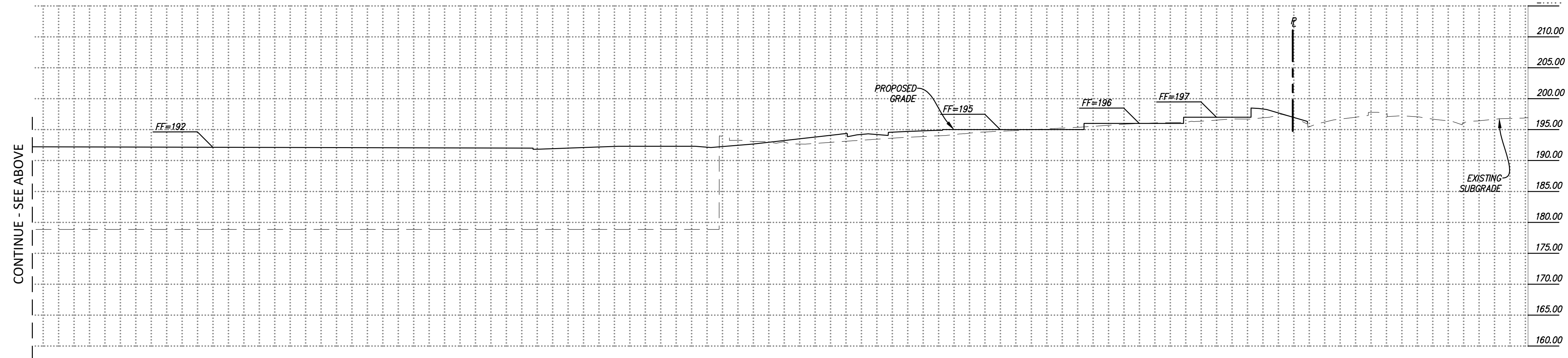


NO PART OF THIS DOCUMENT MAY BE REPRODUCED IN ANY FORM INCLUDING PHOTOCOPY, RECORDING OR ANY INFORMATION RETRIEVABLE AND STORAGE SYSTEM, WITHOUT PERMISSION IN WRITING FROM SANDIS.

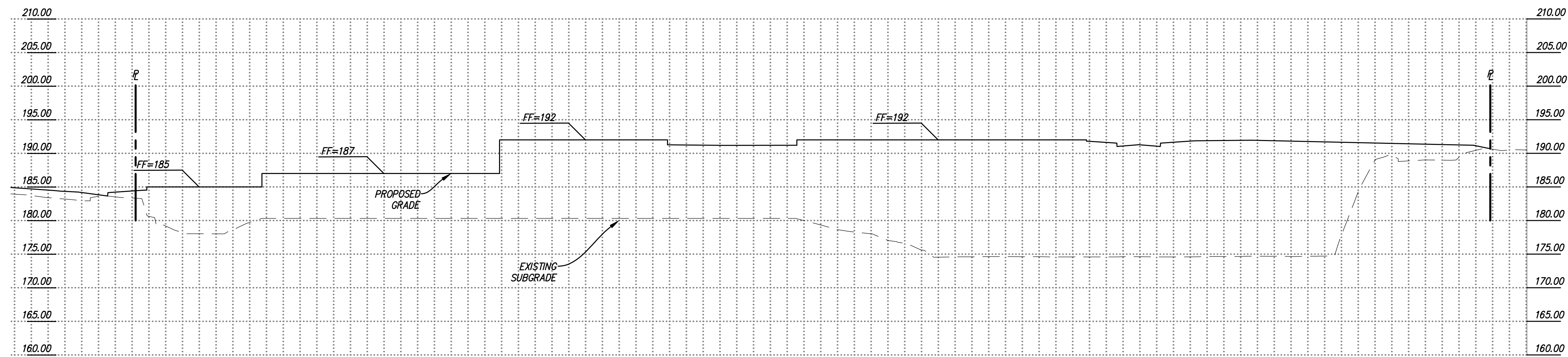


CONTINUE - SEE BELOW



CONTINUE - SEE ABOVE

SECTION 3
HORIZ. SCALE: 1" = 40'
VERT. SCALE: 1" = 10'

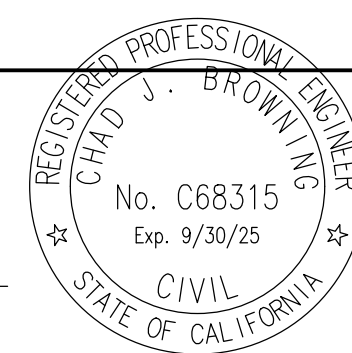


SECTION 4
HORIZ. SCALE: 1" = 40'
VERT. SCALE: 1" = 10'



BUILD ON.
SANDIS.NET

DATE: 12/04/2023
 SCALE: 1"=30"
 DRAWN BY: LS
 APPROVED BY: ND
 DRAWING NO.: 223237
 DATE: DECEMBER 4, 2023
 CHAD J. BROWNING
 R.C.E. NO. 68315, EXPIRES 9-30-25



No.	REVISION/ISSUE	DATE	BY
REV-1	SB-35 APPLICATION REVISIONS	08/06/2018	ND
REV-2	SB-35 APPLICATION CONFORM SET	09/15/2018	ND
REV-3	SB-35 MODIFICATION DOCUMENTS	03/23/2022	ND
REV-4	SB-35 MODIFICATION DOCUMENTS	12/04/2023	ND

SECTIONS

TENTATIVE SUBDIVISION MAP
 VALLCO TOWN CENTER
 CUPERTINO CALIFORNIA

SHEET
TM6.12
 OF 74 SHEETS
 Copyright © 2018 by Sandis