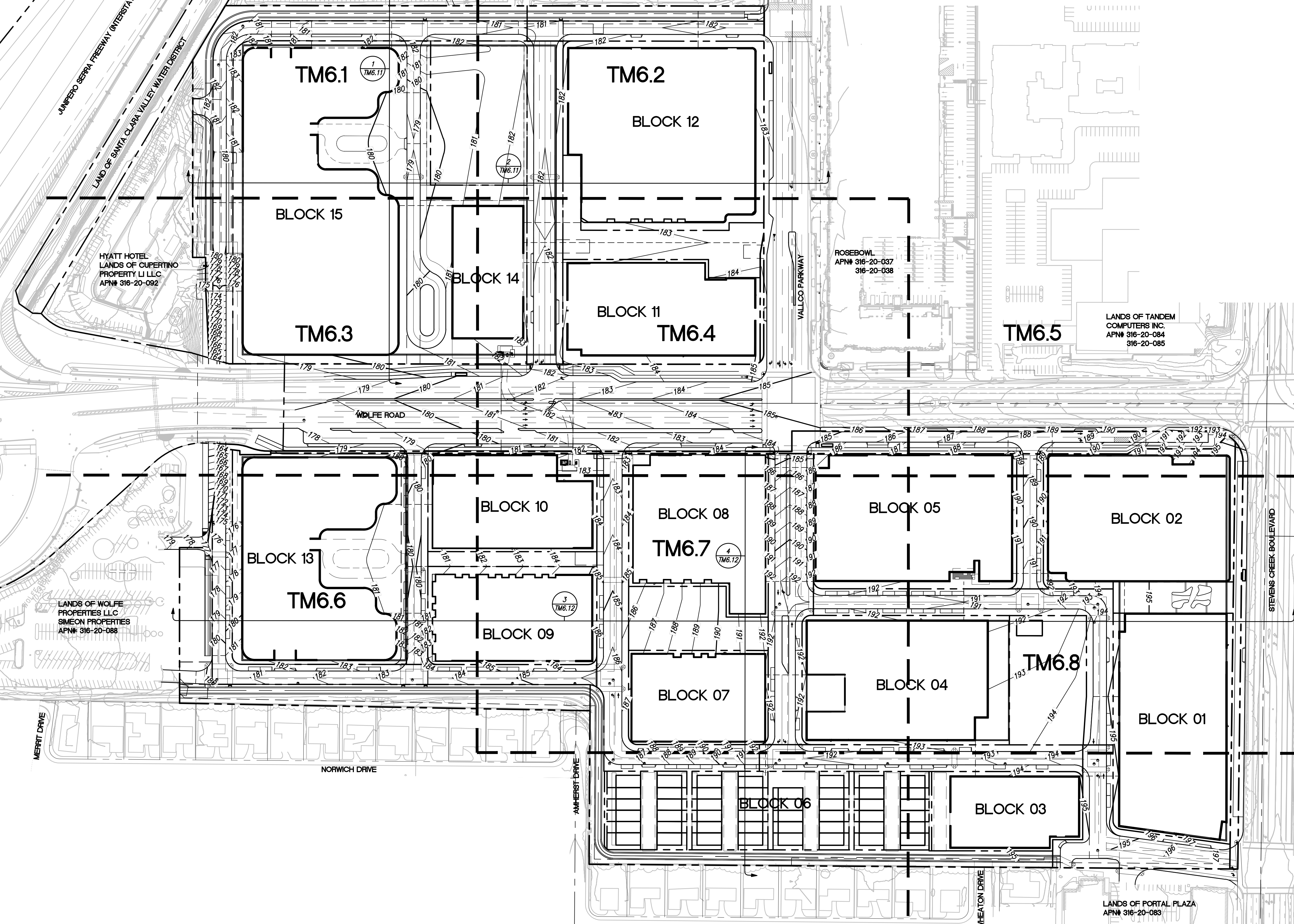
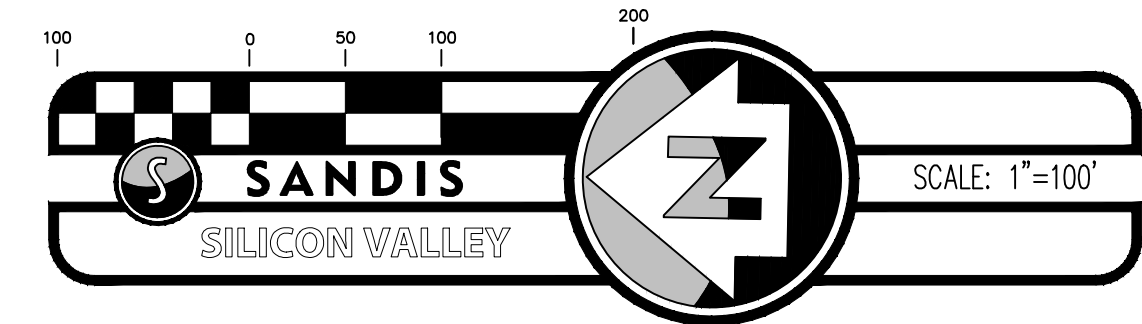


NO PART OF THIS DOCUMENT MAY BE REPRODUCED IN ANY FORM INCLUDING PHOTOCOPY, RECORDING OR ANY INFORMATION RETRIEVABLE AND STORAGE SYSTEM, WITHOUT PERMISSION IN WRITING FROM SANDIS.

LANDS OF APPLE, INC.  
APN# 316-20-076



HYATT HOTEL  
LANDS OF CUPERTINO  
PROPERTY LI LLC  
APN# 316-20-092

LANDS OF WOLFE  
PROPERTIES LLC  
SIMEON PROPERTIES  
APN# 316-20-088

ROSEBOWL  
APN# 316-20-037  
316-20-038

LANDS OF TANDEM  
COMPUTERS INC.  
APN# 316-20-084  
316-20-085

LANDS OF PORTAL PLAZA  
APN# 316-20-083



**BUILD ON.**  
SANDIS.NET

DATE: 12/04/2023  
SCALE: 1"=30'  
DRAWN BY: LS  
APPROVED BY: ND  
DRAWING NO.: 223237  
DATE: DECEMBER 4, 2023  
CHAD J. BROWNING  
R.C.E. NO. 68315, EXPIRES 9-30-25



No.	REVISION/ISSUE	DATE	BY
REV-1	SB-35 APPLICATION REVISIONS	08/06/2018	ND
REV-2	SB-35 APPLICATION CONFORM SET	09/15/2018	ND
REV-3	SB-35 MODIFICATION DOCUMENTS	03/23/2022	ND
REV-4	SB-35 MODIFICATION DOCUMENTS	12/04/2023	ND

OVERALL  
GRADING AND DRAINAGE PLAN

TENTATIVE SUBDIVISION MAP  
VALLCO TOWN CENTER  
CUPERTINO CALIFORNIA

SHEET  
**TM6.0**  
OF 74 SHEETS  
Copyright © 2018 by Sandis