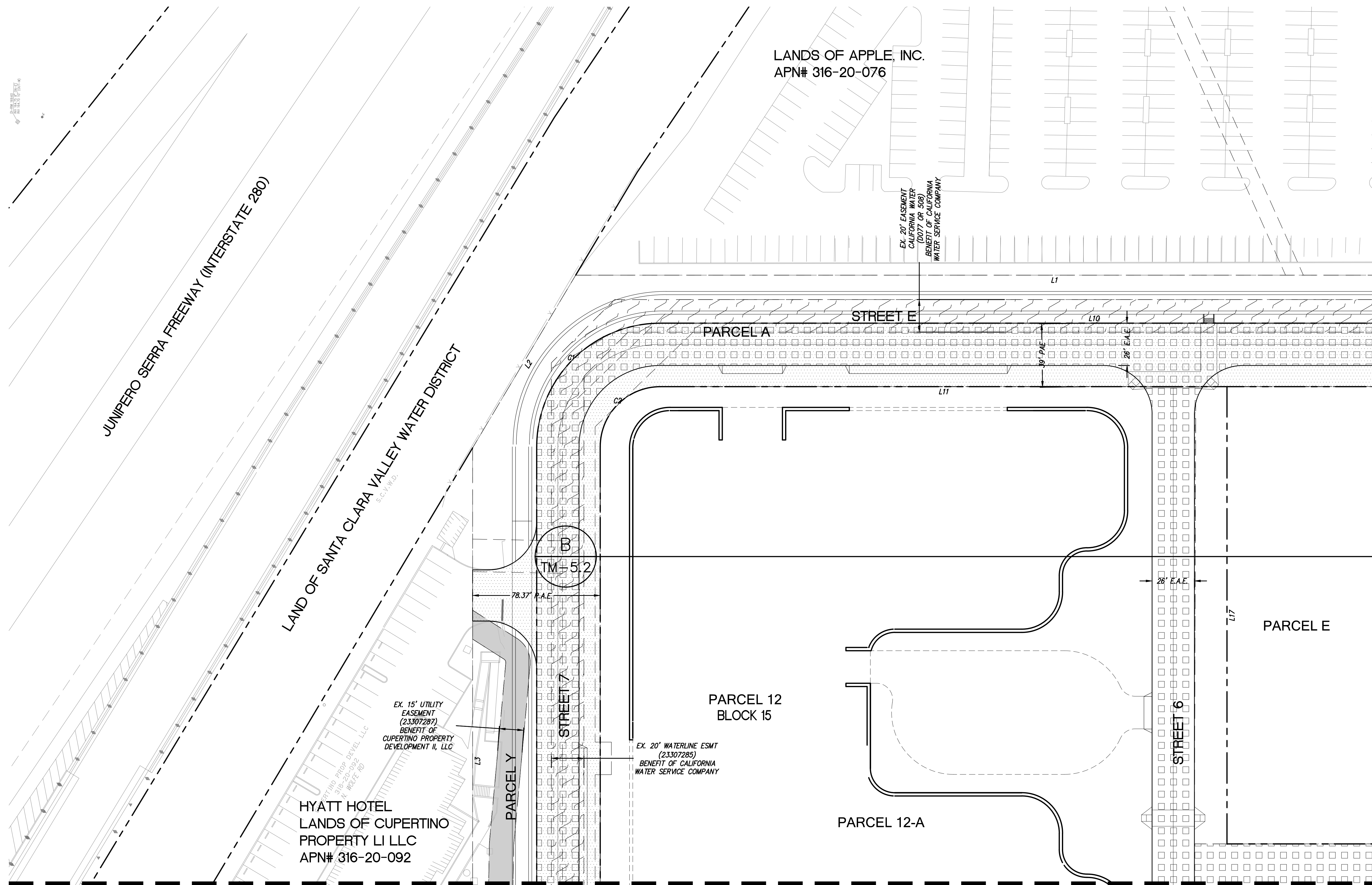


NO PART OF THIS DOCUMENT MAY BE REPRODUCED IN ANY FORM INCLUDING PHOTOCOPY, RECORDING OR ANY INFORMATION RETRIEVABLE AND STORAGE SYSTEM, WITHOUT PERMISSION IN WRITING FROM SANDIS.



LEGEND

- PROPOSED PROPERTY LINE
- ADJACENT PROPERTY LINE
- STREET CENTERLINE (BASED ON CITY MONUMENTATION) EASEMENT LINE
- RELINQUISHED INGRESS/ EGRESS RIGHTS TO ADJACENT PROPERTIES
- PUBLIC UTILITY/SERVICE EASEMENT (P.U.E.)/(P.S.E.)
- PUBLIC ACCESS EASEMENT (P.A.E.)
- SANITARY SEWER EASEMENT
- WATER EASEMENT
- AIR RIGHTS EASEMENT
- STORMWATER MANAGEMENT FACILITY EASEMENT
- PRIVATE VEHICULAR AND PEDESTRIAN INGRESS AND EGRESS EASEMENT
- COLUMNS, SUPPORTS, AND FOOTINGS EASEMENT
- PG&E EASEMENT
- EMERGENCY ACCESS EASEMENT (E.A.E.)

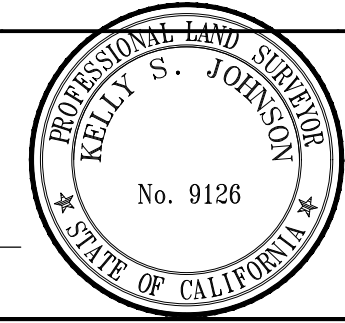
MATCHLINE - SEE SHEET TM5.2

MATCHLINE - SEE SHEET TM5.3



BUILD ON.
SANDIS.NET

DATE: 12/04/2023	DATE: DECEMBER 4, 2023
SCALE: 1"=30'	
DRAWN BY: LS	
APPROVED BY: ND	
DRAWING NO: 223237	
	KELLY S. JOHNSON P.L.S. NO. 9126, EXPIRES 9-30-26



No.	REVISION/ISSUE	DATE	BY
REV-1	SB-35 APPLICATION REVISIONS	08/06/2018	ND
REV-2	SB-35 APPLICATION CONFORM SET	09/15/2018	ND
REV-3	SB-35 MODIFICATION DOCUMENTS	03/23/2022	ND
REV-4	SB-35 MODIFICATION APPLICATION	05/27/2022	ND
REV-5	SB-35 MODIFICATION DOCUMENTS	12/04/2023	ND

PUBLIC AND PRIVATE
EASEMENTS, DIMENSIONS AND BOUNDARIES

TENTATIVE SUBDIVISION MAP
VALLCO TOWN CENTER
CUPERTINO CALIFORNIA

SHEET
TM5.1
OF 74 SHEETS
Copyright © 2018 by Sandis