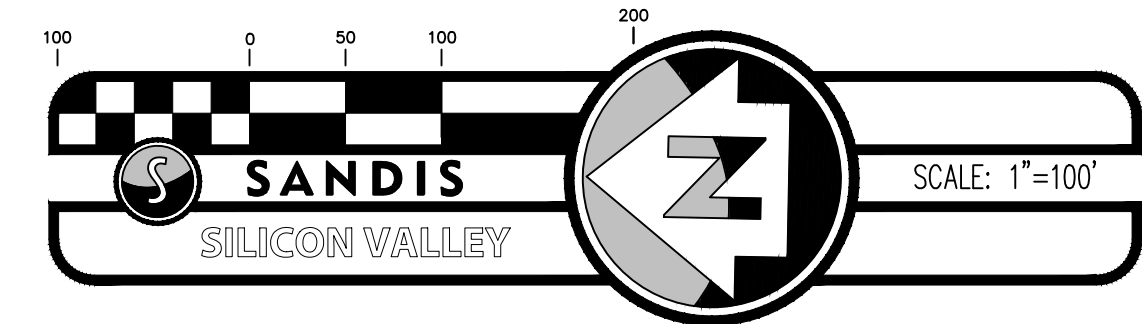


NO PART OF THIS DOCUMENT MAY BE REPRODUCED IN ANY FORM INCLUDING PHOTOCOPY, RECORDING OR ANY INFORMATION RETRIEVABLE AND STORAGE SYSTEM, WITHOUT PERMISSION IN WRITING FROM SANDIS.

LANDS OF APPLE, INC.
APN# 316-20-076

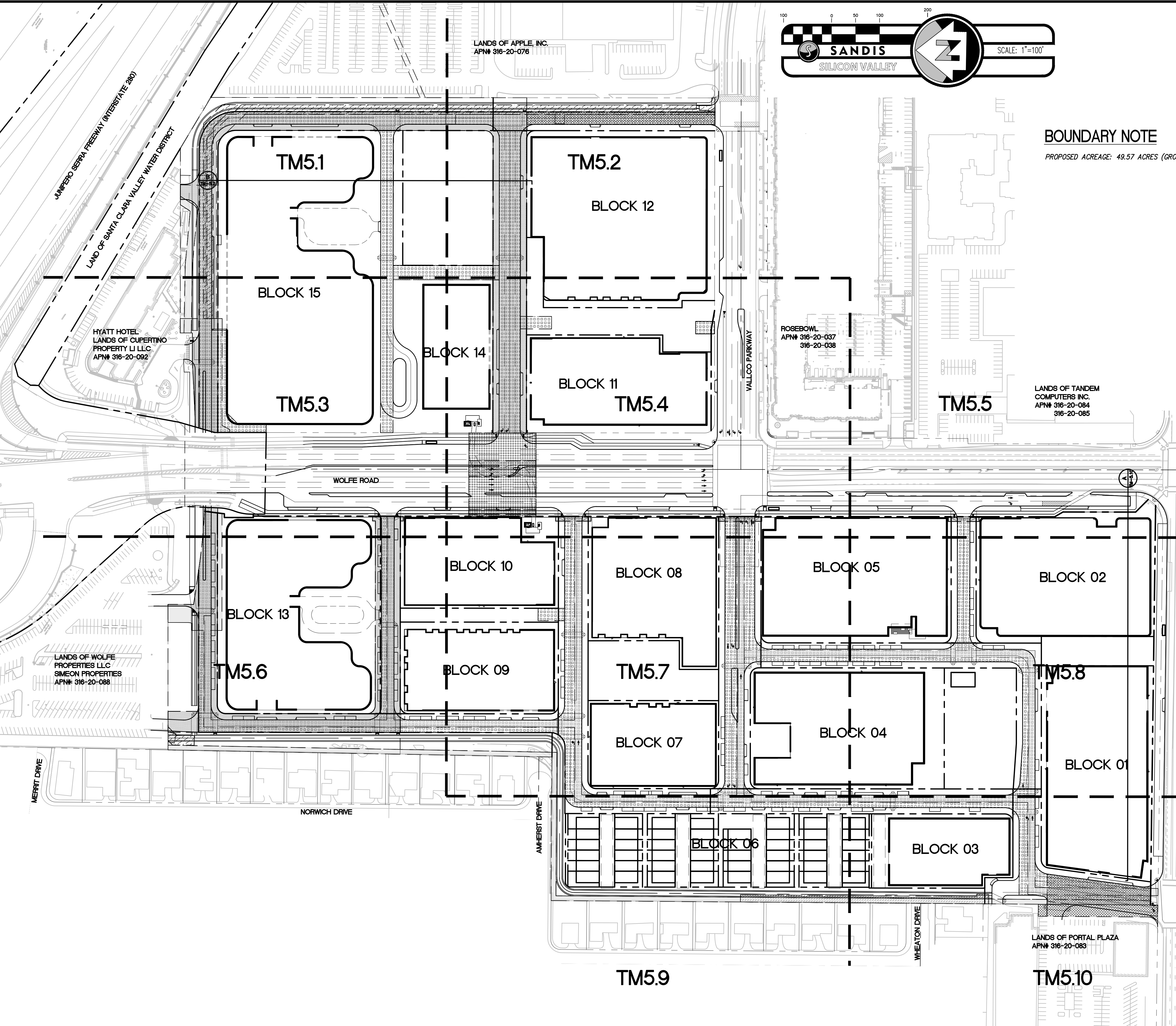


LEGEND

- PROPOSED PROPERTY LINE
- ADJACENT PROPERTY LINE
- STREET CENTERLINE (BASED ON CITY MONUMENTATION) EASEMENT LINE
- /// RELINQUISHED INGRESS/ EGRESS RIGHTS TO ADJACENT PROPERTIES
- [Pattern] PUBLIC UTILITY/SERVICE EASEMENT (P.U.E.)/(P.S.E.)
- [Pattern] PUBLIC ACCESS EASEMENT (P.A.E.)
- [Pattern] SANITARY SEWER EASEMENT
- [Pattern] WATER EASEMENT
- [Pattern] AIR RIGHTS EASEMENT
- [Pattern] STORMWATER MANAGEMENT FACILITY EASEMENT
- [Pattern] PRIVATE VEHICULAR AND PEDESTRIAN INGRESS AND EGRESS EASEMENT
- [Pattern] COLUMNS, SUPPORTS, AND FOOTINGS EASEMENT
- [Pattern] PG&E EASEMENT
- [Pattern] EMERGENCY ACCESS EASEMENT (E.A.E.)

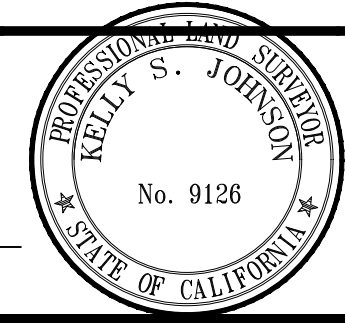
BOUNDARY NOTE

PROPOSED ACREAGE: 49.57 ACRES (GROSS)



BUILD ON.
SANDIS.NET

DATE: 12/04/2023	DATE: DECEMBER 4, 2023
SCALE: 1"=100'	
DRAWN BY: LS	
APPROVED BY: ND	
DRAWING NO.: 223237	KELLY S. JOHNSON P.L.S. NO. 9126, EXPIRES 9-30-26



No.	REVISION/ISSUE	DATE	BY
REV-1	SB-35 APPLICATION REVISIONS	08/06/2018	ND
REV-2	SB-35 APPLICATION CONFORM SET	09/15/2018	ND
REV-3	SB-35 MODIFICATION DOCUMENTS	03/23/2022	ND
REV-4	SB-35 MODIFICATION DOCUMENTS	12/04/2023	ND

**OVERALL
PUBLIC AND PRIVATE
EASEMENTS, DIMENSIONS AND BOUNDARIES**

**TENTATIVE SUBDIVISION MAP
VALLCO TOWN CENTER
CUPERTINO CALIFORNIA**

SHEET
TM5.0
OF 74 SHEETS
Copyright © 2018 by Sandis