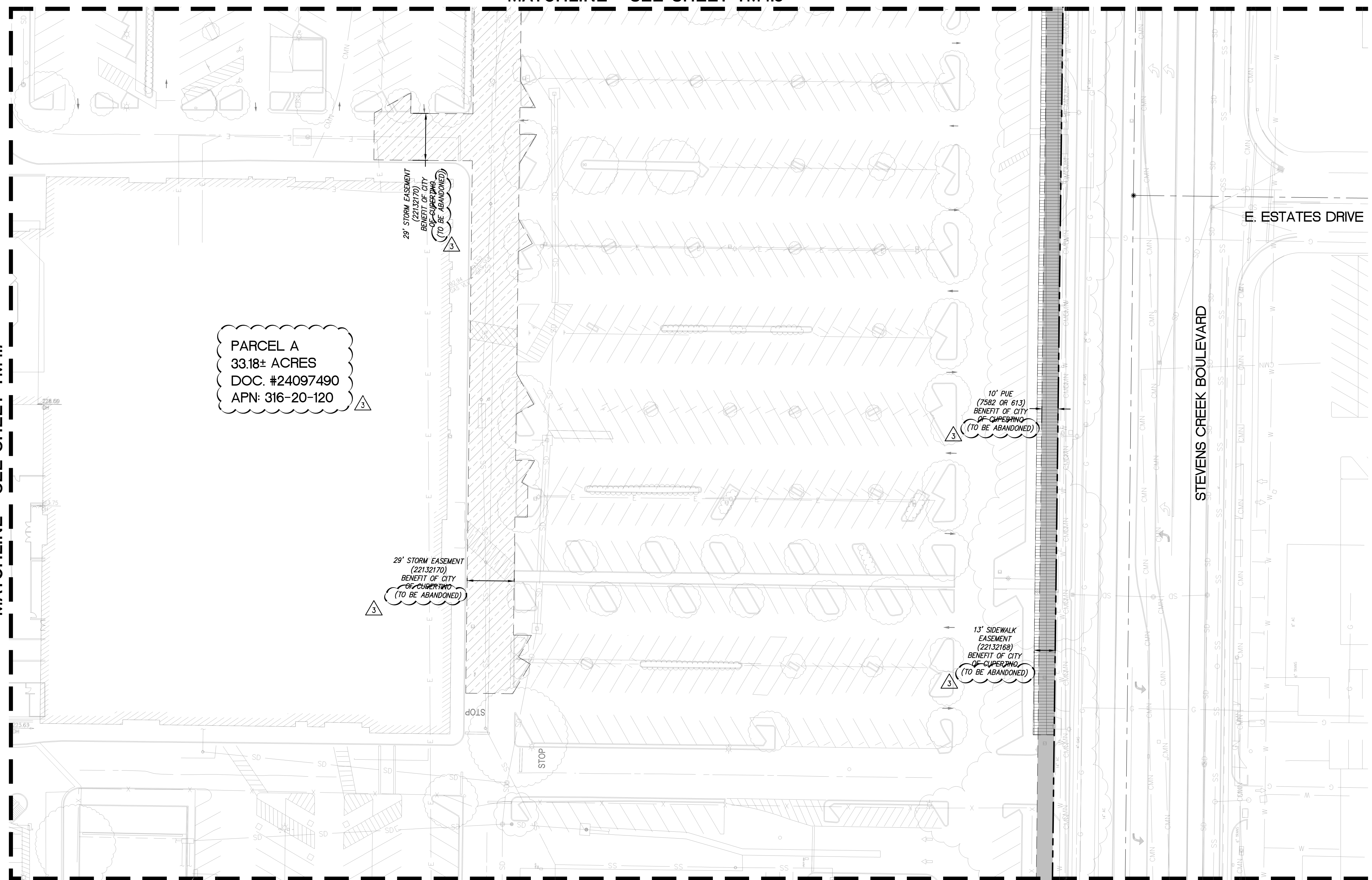


MATCHLINE - SEE SHEET TM4.5

MATCHLINE - SEE SHEET TM4.7



LEGEND

- PROPERTY LINE
- ADJACENT PROPERTY LINE STREET CENTERLINE (BASED ON CITY MONUMENTATION) EASEMENT LINE
- RELINQUISHED INGRESS/ EGRESS RIGHTS TO ADJACENT PROPERTIES
- PUBLIC UTILITY EASEMENT (P.U.E.)
- ROADWAY EASEMENT
- PUBLIC ACCESS EASEMENT (P.A.E.)
- SANITARY SEWER EASEMENT
- WATER EASEMENT
- AIR RIGHTS EASEMENT
- STORMWATER MANAGEMENT FACILITY EASEMENT
- PUBLIC ROADWAY AND LANDSCAPE EASEMENT
- VEHICULAR AND PEDESTRIAN INGRESS AND EGRESS EASEMENT
- SIDEWALK EASEMENT
- TELEPHONE EASEMENT
- VEHICULAR TUNNEL EASEMENT
- COLUMNS, SUPPORTS, FOOTINGS EASEMENT
- PG&E EASEMENT
- EMERGENCY VEHICLE ACCESS EASEMENT (E.V.A.E.)

NOTES:

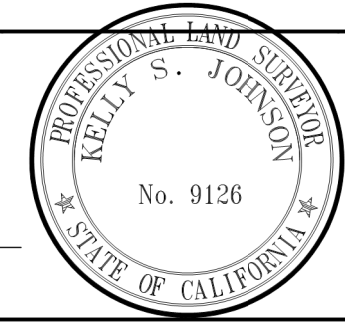
1. ONLY EXISTING EASEMENTS ARE SHOWN ON THIS SHEET. ALL NEW EASEMENTS NEEDED FOR THE DEVELOPMENT ARE SHOWN ON THIS SHEET.

MATCHLINE - SEE SHEET TM4.10

NO PART OF THIS DOCUMENT MAY BE REPRODUCED IN ANY FORM INCLUDING PHOTOCOPY, RECORDING OR ANY INFORMATION RETRIEVABLE AND STORAGE SYSTEM, WITHOUT PERMISSION IN WRITING FROM SANDIS.

SANDIS CIVIL ENGINEERS SURVEYORS PLANNERS
1700 S. Winchester Blvd, Suite 200, Campbell, CA 95008 | P. 408.636.0900 | F. 408.636.0999 | www.sandis.net
SILICON VALLEY TRI-VALLEY CENTRAL VALLEY SACRAMENTO EAST BAY/SF

DATE: 03/23/2022	DATE: MAY 27, 2022
SCALE: 1"=30'	
DRAWN BY: SP	
APPROVED BY: ND	
DRAWING NO.: 215028	KELLY S. JOHNSON P.L.S. NO. 9126, EXPIRES 9-30-22



No.	REVISION/ISSUE	DATE	BY
REV-0	SB-35 DEVELOPMENT APPLICATION	03/27/2018	ND
REV-1	SB-35 APPLICATION REVISIONS	08/06/2018	ND
REV-2	SB-35 APPLICATION CONFORM SET	09/15/2018	ND
REV-3	SB-35 MODIFICATION APPLICATION	05/27/2022	ND

EXISTING PUBLIC AND PRIVATE EASEMENTS AND BOUNDARIES

TENTATIVE SUBDIVISION MAP
VALLCO TOWN CENTER
CUPERTINO CALIFORNIA

SHEET
TM4.8
OF 73 SHEETS
Copyright © 2018 by Sandis